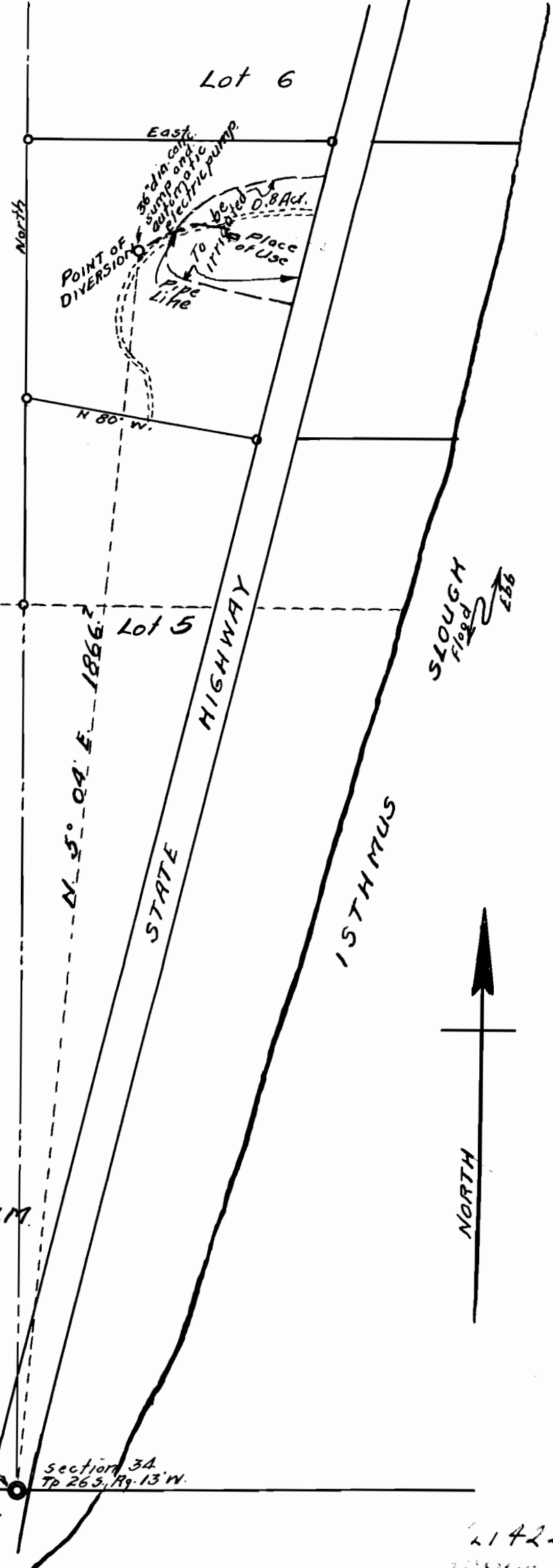


I, C. F. Bessee, of Coos Bay, Oregon, do hereby certify that this map was made from notes taken during an actual survey made by me on the 7th day of February, 1946, and that it correctly represents the Point of Diversion and the approximate locations of the place of use, and of the creeks in the immediate vicinity.

C. F. Bessee.

C. F. Bessee.

PLAN ACCOMPANYING APPLICATION OF
W. E. BURROWS
 FOR RIGHT TO APPROPRIATE WATER
 FROM AN UN-NAMED STREAM IN
 LOT 6, OF SECTION 34, TP. 26 S., RG. 13 W., W.M.
 COOS COUNTY, OREGON.
 SCALE 1" = 200 FEET.



1/4 Section Corner
 Section 34
 Tp 26 S., Rg. 13 W.
 Section 3
 Tp 27 S., Rg. 13 W.

21422
 16808