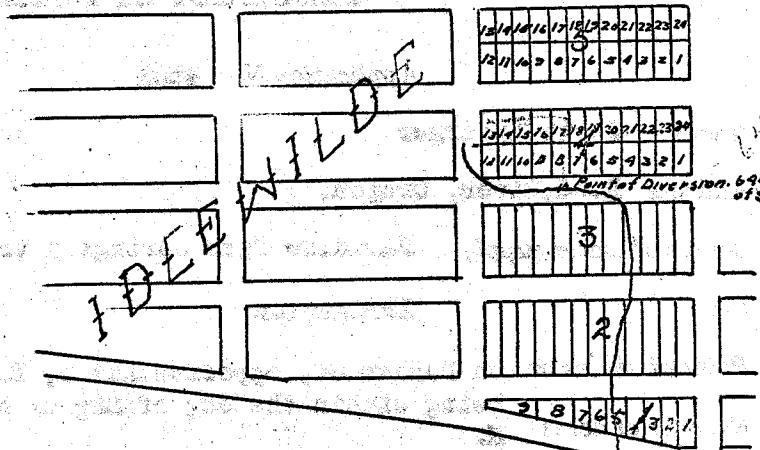


S 26, T. 3 N., R. 10 E. W.M.

10001



OFFICE OF STATE ENGINEER
 RECEIVED
 SEP 3 1915
 SALEM, OREGON

MAP

Accompanying application for permit
 to appropriate water by J.T. Lybarger.
 Sept 4, 1915 P.M. Morse
 Surveyor

Scale 1" = 80 ch.

CERTIFICATE

I, P.M. Morse, of Hood River, Ore. do hereby certify that
 this map was made from notes taken during an actual
 survey made by me during 1914, and that it correctly
 represents the works described in the accompanying
 application, together with the location of streams
 and other ditches in the immediate vicinity, and
 has written thereon the area in each smallest legal
 subdivision which it is proposed to irrigate.

P.M. Morse
 Surveyor.

OFFICE OF STATE ENGINEER
 RECEIVED
 SEP 3 1915
 SALEM, OREGON

450 /
 2640

4201