

SURVEYOR'S CERTIFICATE

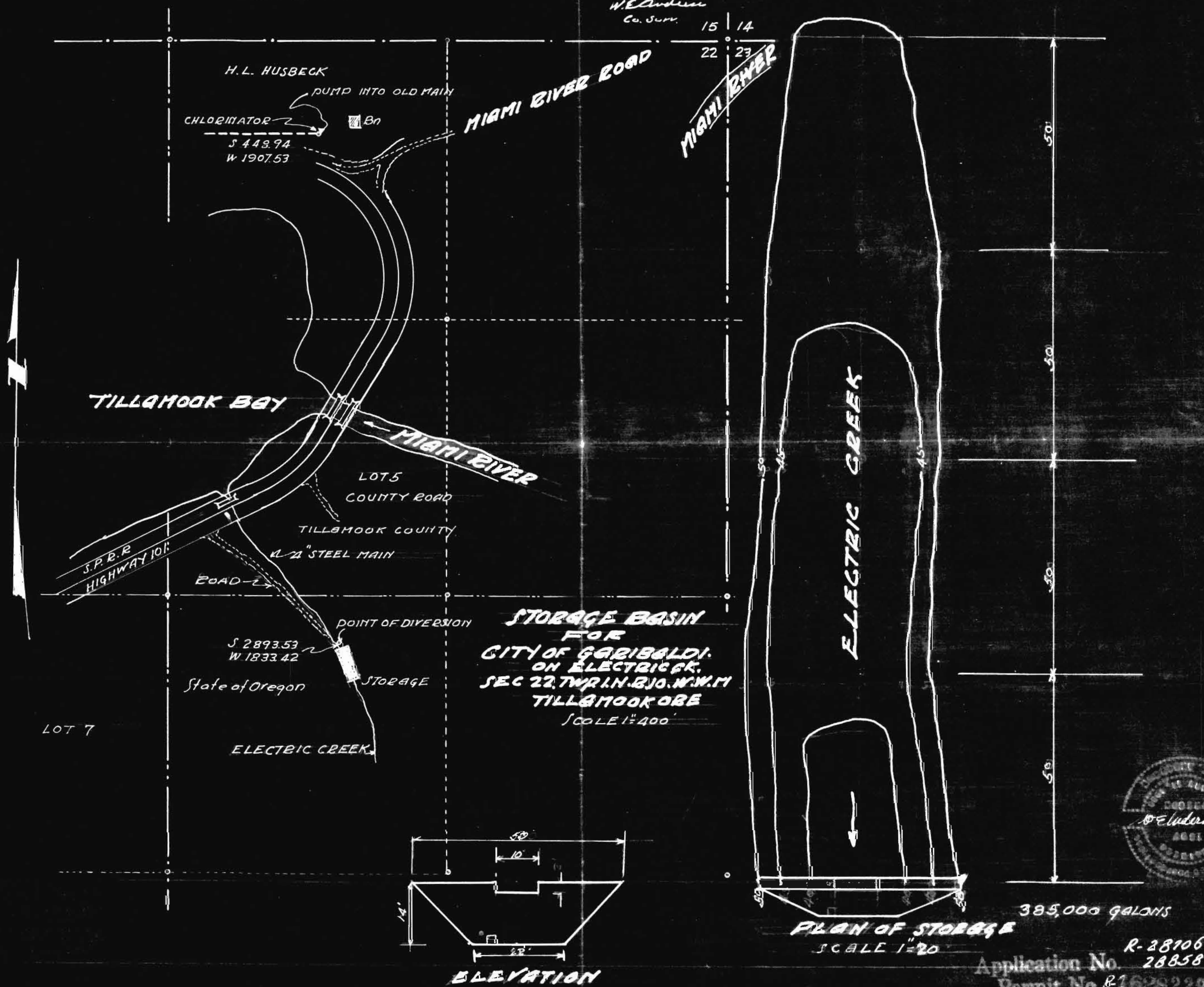
I, W.E. Anderson of Tillamook, Ore do hereby certify that this map was made from notes taken during an actual survey made by me in July 1953 and that the monuments and storage basin are correctly located with a tie to the N.E. COR SEC 22, T.14 N. R.10. W. W.M.

W.E. Anderson

Co. Surv.

15 14

22 23



H.L. HUSBECK
 CHLORINATOR
 PUMP INTO OLD MAIN
 S 443.94
 W 1907.53

MIAMI RIVER ROAD

MIAMI RIVER

TILLAMOOK BAY

MIAMI RIVER

LOT 5
 COUNTY ROAD

TILLAMOOK COUNTY
 12" STEEL MAIN

S.P.R.R.
 HIGHWAY 101

ROAD

POINT OF DIVERSION

S 2893.53
 W 1833.42

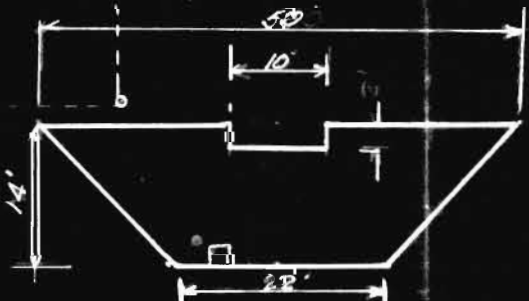
State of Oregon

STORAGE

**STORAGE BASIN
 FOR
 CITY OF GARIBALDI.
 ON ELECTRIC CREEK.
 SEC 22, T.14 N. R.10. W. W.M
 TILLAMOOK ORE
 SCALE 1"=400'**

ELECTRIC CREEK

LOT 7



ELEVATION



**PLAN OF STORAGE
 SCALE 1"=20'**

385,000 GALONS

Application No. R-28106
 28858
 Permit No. R-162922982

