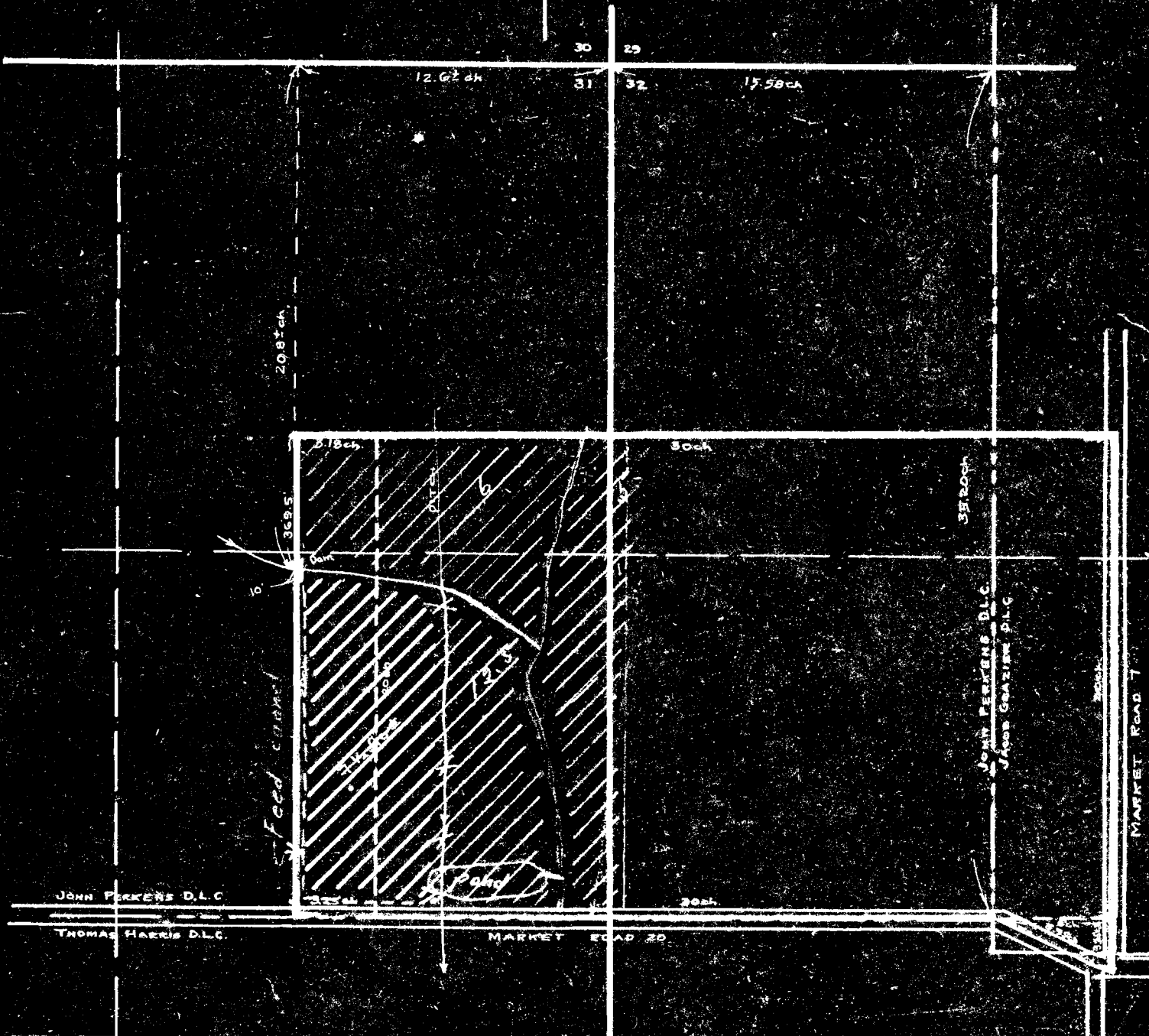


Charles & Doris Teegarden 60, 6.43 and .98 Acres  
 Situated in Sections 31 and 32, T25, R4W, W.M.  
 Compiled from Yamhill County Assessors Records By  
 M. H. KRAFT Tax Lot Nos 3224-1<sup>st</sup>-10  
 1" = 400'

Water to be used is overflow from City Reservoir.

N



24477 v R-25390  
 1202 R-1197

24477 2-90