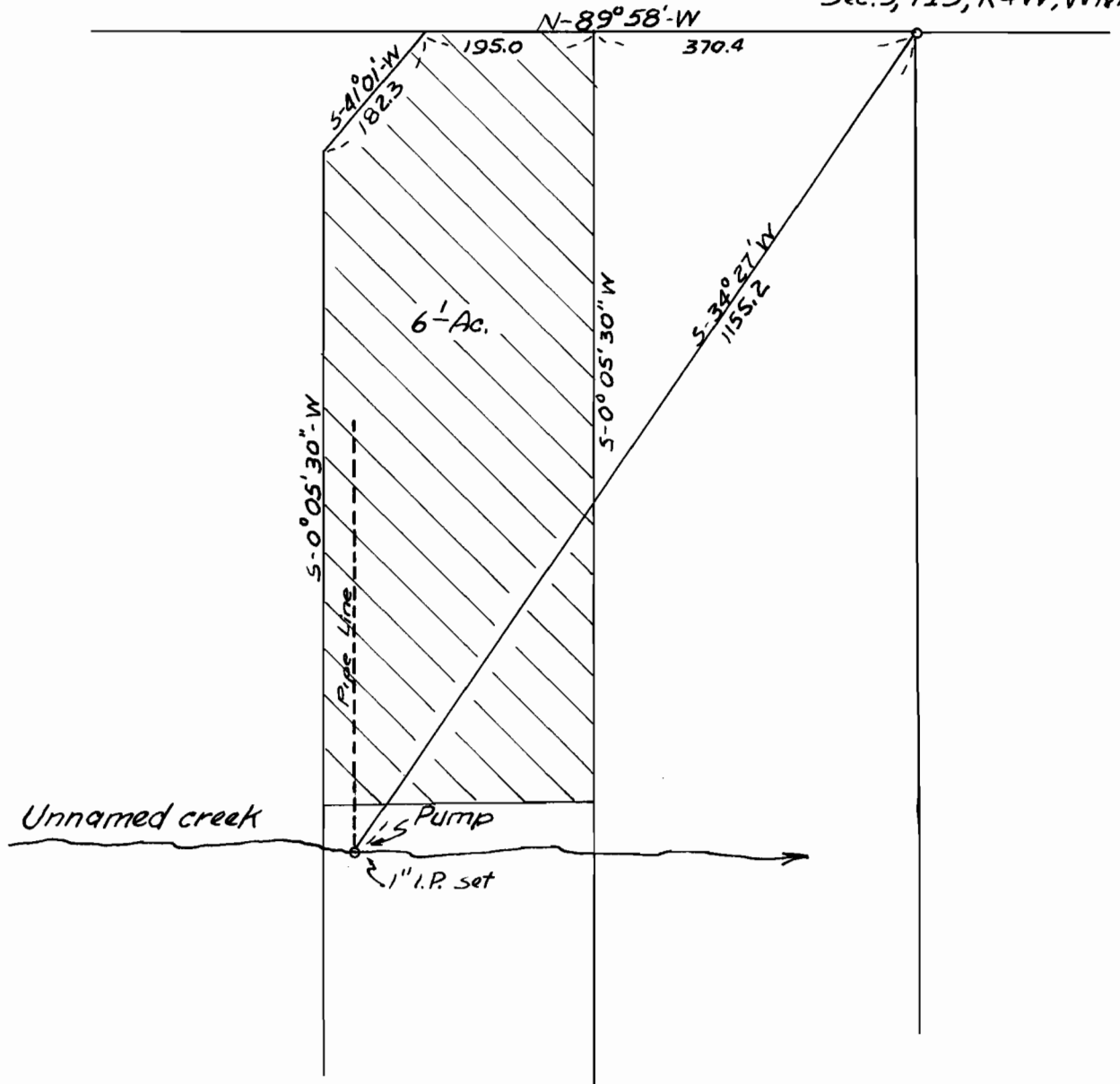


1/4 Cor. on North line
Sec. 3, T15, R4W, WM



Scale - 1" = 200'

I, Ray C. Hansen Jr of Portland, Oregon do hereby certify that this map was made from notes taken during an actual survey made by me on May 23, 1954; that the monument shown on this map consisting of a 1" iron pipe is 1155.2 ft. S-34° 27' W from the 1/4 corner on the north line of Sec. 3, T15, R4W, W.M.

RECEIVED
MAY 7 1954

Application No. 29383

