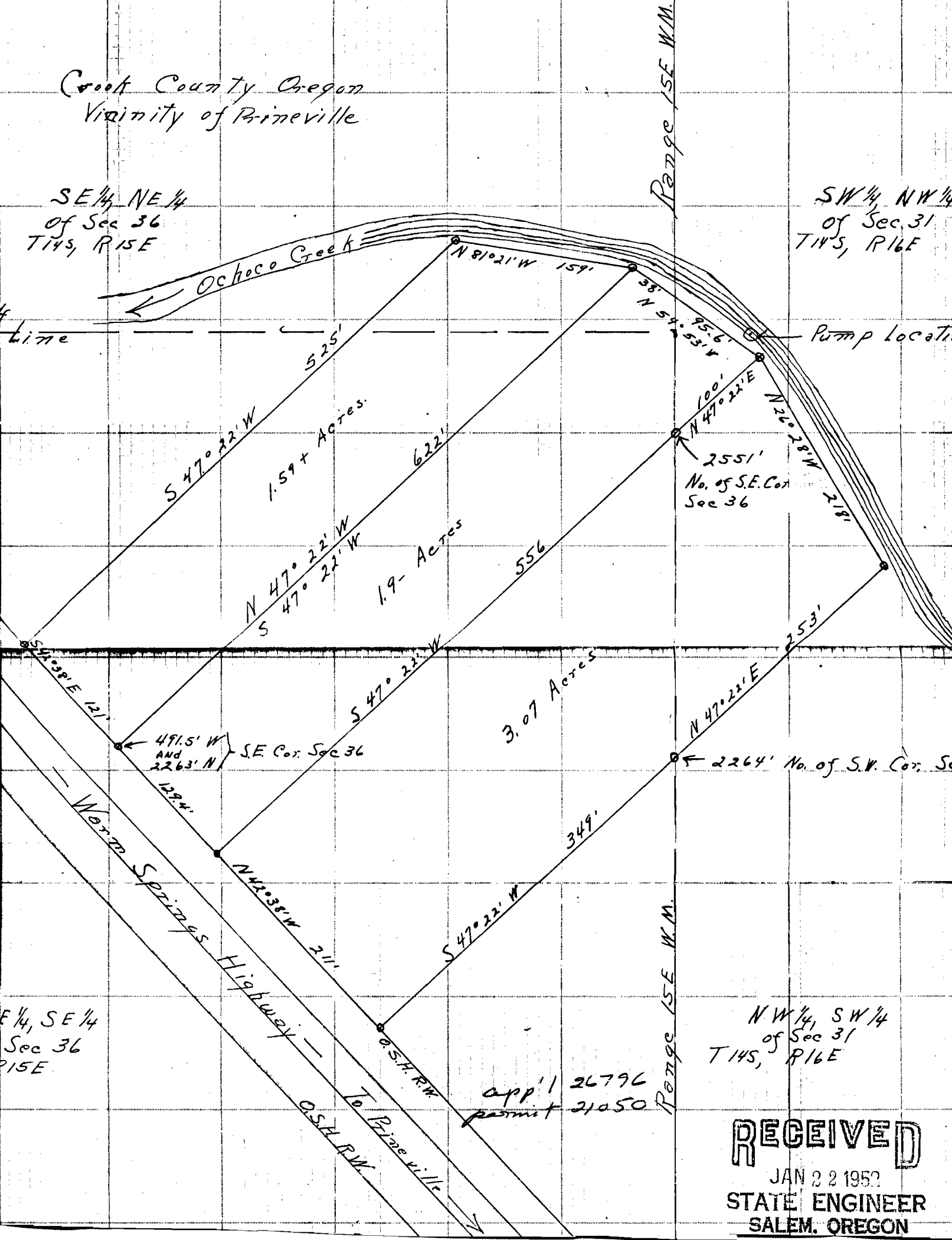


Crook County Oregon
 Vicinity of Prineville

SE 1/4, NE 1/4
 of Sec 36
 T14S, R15E

SW 1/4, NW 1/4
 of Sec 31
 T14S, R16E



E 1/4, SE 1/4
 Sec 36
 R15E

NW 1/4, SW 1/4
 of Sec 31
 T14S, R16E

RECEIVED
 JAN 22 1952
 STATE ENGINEER
 SALEM, OREGON