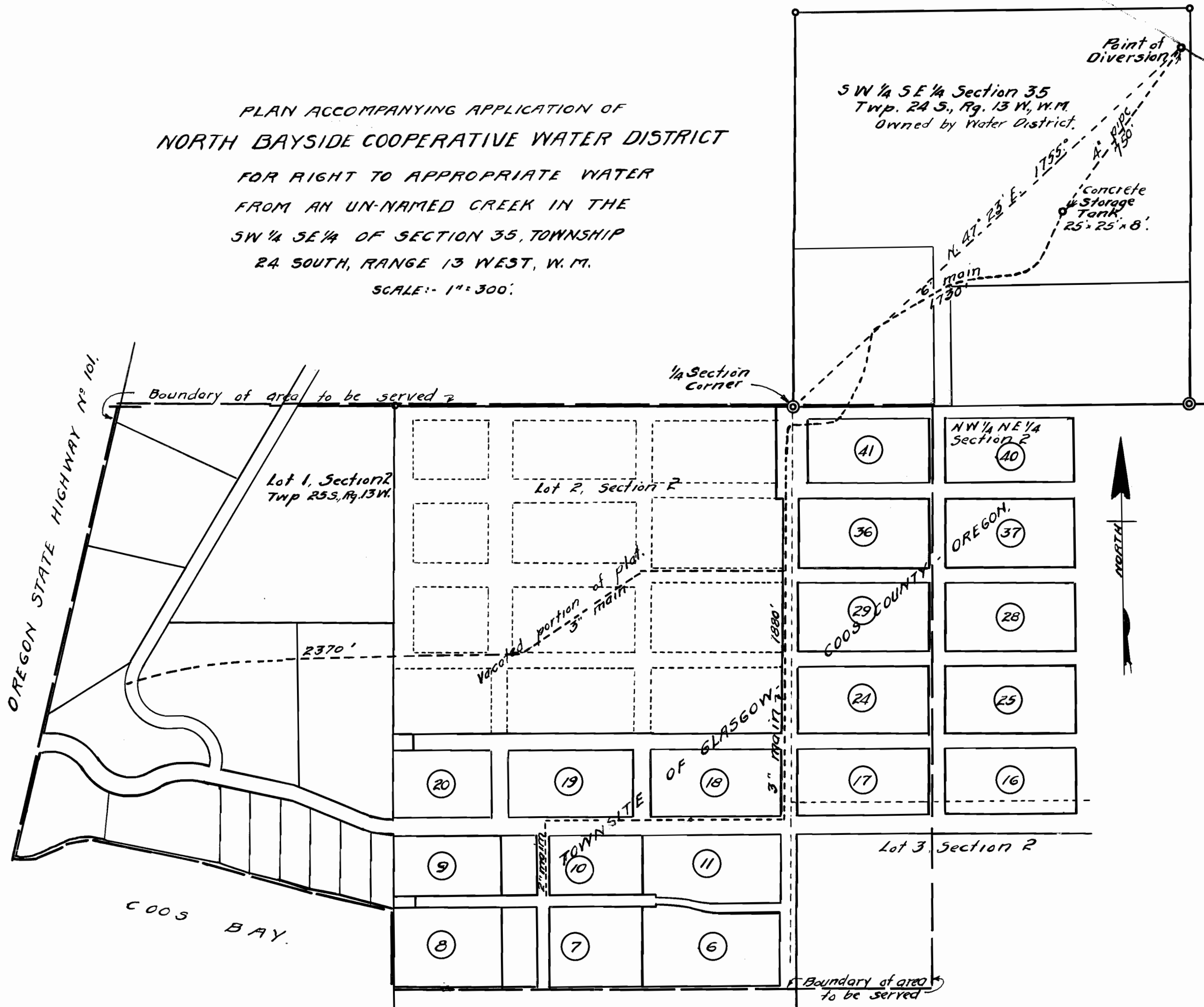


PLAN ACCOMPANYING APPLICATION OF
NORTH BAYSIDE COOPERATIVE WATER DISTRICT

FOR RIGHT TO APPROPRIATE WATER
FROM AN UN-NAMED CREEK IN THE
SW 1/4 SE 1/4 OF SECTION 35, TOWNSHIP
24 SOUTH, RANGE 13 WEST, W.M.

SCALE: - 1" = 300'



I, C. F. Bessee, of Coos Bay, Oregon,
do hereby certify that this map was
made from notes taken during an
actual survey made by me on the
8th day of April, 1947, and that it
correctly represents the locations
of the proposed Point of Diversion,
storage tank, main distribution lines,
and area to be served,

C. F. Bessee.

C. F. Bessee.

22658