

INSERT TO SHOW  
LEGAL SUBDIVISIONS

TRACED FROM SURVEYOR  
GENERAL'S MAP  
NO. 106  
DATED 1913

ENGINEER'S CERTIFICATE

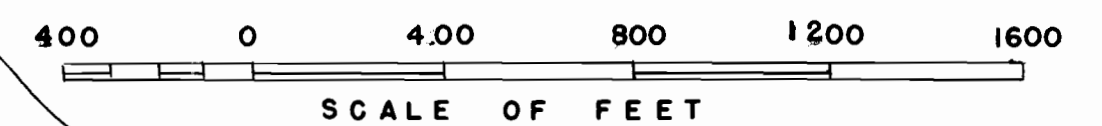
I, SHERWIN M. BARTON of Boise, Idaho do hereby certify that this map was made from notes taken during an actual survey made by me on October 21, 1952, except as otherwise shown; that the monuments shown on this map bear as follows from the existing corner between sections 27, 26, 34 & 35, T15 S, R46 E, W.M. —

- A — N 25° 37' W, 8781.5'
- B — N 20° 10' W, 7055.7'
- C — N 13° 00' W, 5561.4'

SIGNED — *Sherwin M. Barton* 11-1-52

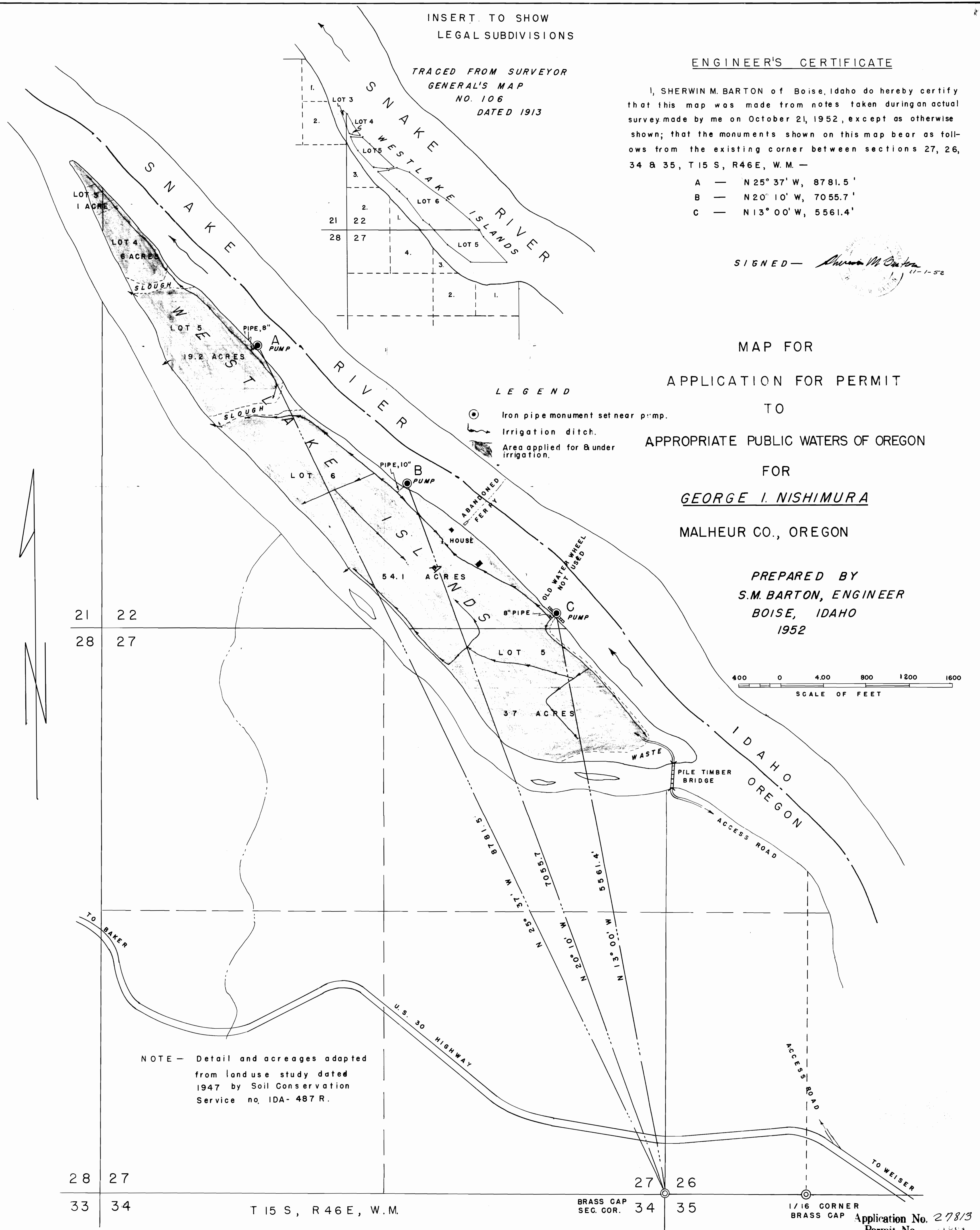
MAP FOR  
APPLICATION FOR PERMIT  
TO  
APPROPRIATE PUBLIC WATERS OF OREGON  
FOR  
GEORGE I. NISHIMURA  
MALHEUR CO., OREGON

PREPARED BY  
S.M. BARTON, ENGINEER  
BOISE, IDAHO  
1952



LEGEND

- Iron pipe monument set near pump.
- Irrigation ditch.
- ▨ Area applied for & under irrigation.



NOTE — Detail and acreages adapted from landuse study dated 1947 by Soil Conservation Service no. IDA- 487 R.

BRASS CAP  
SEC. COR. 34 35

1/16 CORNER  
BRASS CAP  
Application No. 27813  
Permit No. 41551