

1/4 Cor. Sec. 15 & 16 Tp 27S-R96W WM.  
East 880'

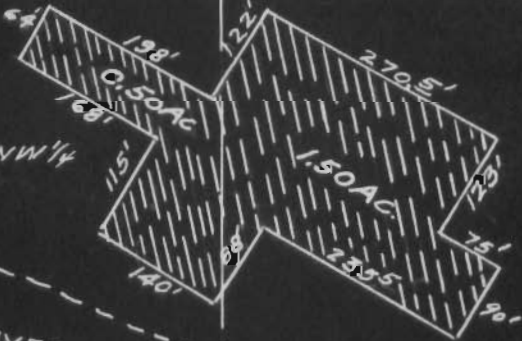


South

2940'

Prop. Line 1

16 | 15  
21 | 22  
Tp. 27S-R96W  
WM.



Note:  
Acreage shown is  
exclusive of  
House, Garage  
walks & Driveway

South

Umpqua  
River

NW 1/4 NW 1/4

NE 1/4 NW 1/4

Meander Line

### MAP

SHOWING LANDS TO BE IRRIGATED  
IN

NW 1/4 NW 1/4 & NE 1/4 NW 1/4 OF SECTION 22  
TP. 27S-R96W WM.

Scale - 1" = 200'

August 1953.

Application No.  
Permit No.

2854B