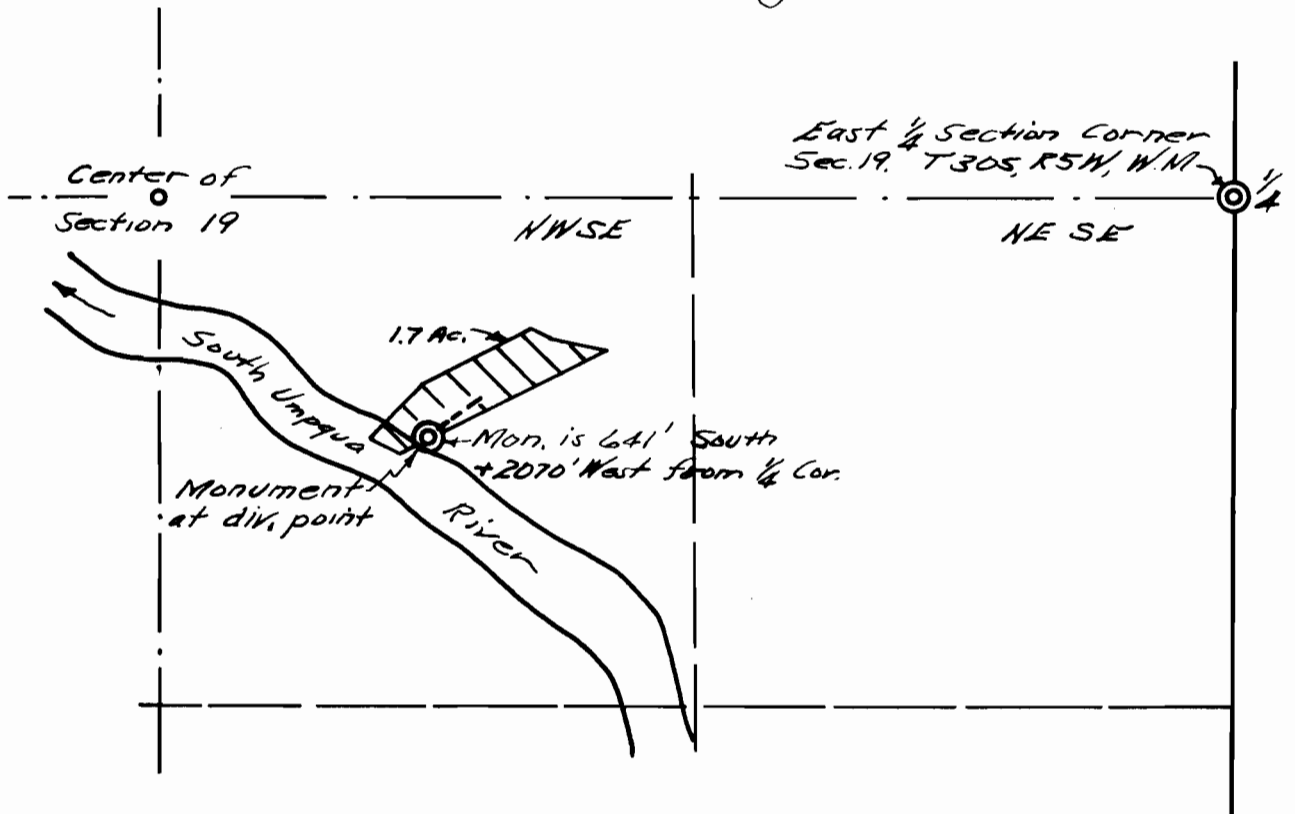


MAP  
of  
PROPOSED WATER RIGHT  
for  
~ GORDON HARRY ~

Scale 1" = 500' July 1953.



I, John H. Markham, Jr. of Riddle, Oregon do hereby certify that this map was made from notes taken during an actual survey made by me on July 10, 1953, that the monument shown on this map consists of a 1" x 24" iron pipe set in a pile of stones from which a 9" Maple bears N44°W 54.0' dist. mkd. W.R. B.T. A 15" W.O. bears N59°E 53.0' dist. mkd. xxx B.T. The monument is 641.0' South and 2070.0' West from the East  $\frac{1}{4}$  Section Corner, Sec. 19, T30S, R5W, W1N, Douglas County, Oregon.



28672  
22578