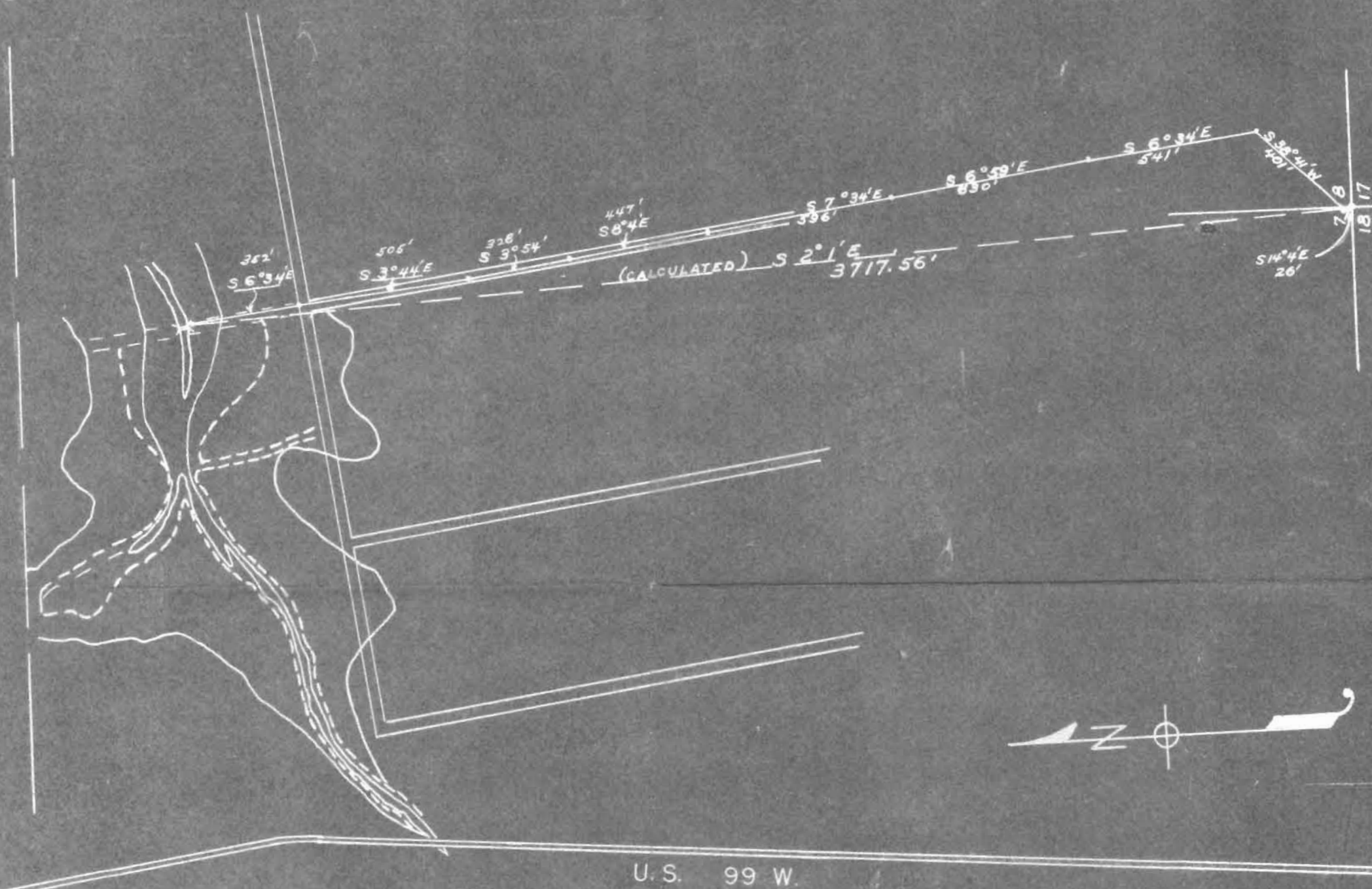


I, George J. Kernan, of Portland, Oregon,
do hereby certify that this map was made from
notes taken during an actual survey made by
me (or under my immediate supervision) on
May 29, 1952; that the monument shown on this
map consisting of iron pipe is 3717.56' S 2° 1' E
from S. E. corner, Section 7, T 10 S, R 4 W.

George Kernan

R-4-W

R-27483
Application No. 21633
Permit No. R1A01



T-10-S

U.S. 99 W.

Polk
Benton

APPROX. 6.3 ACRES FLOODED.
APPROX. 7.8 ACRE FEET OR 2,541,630. gal.

