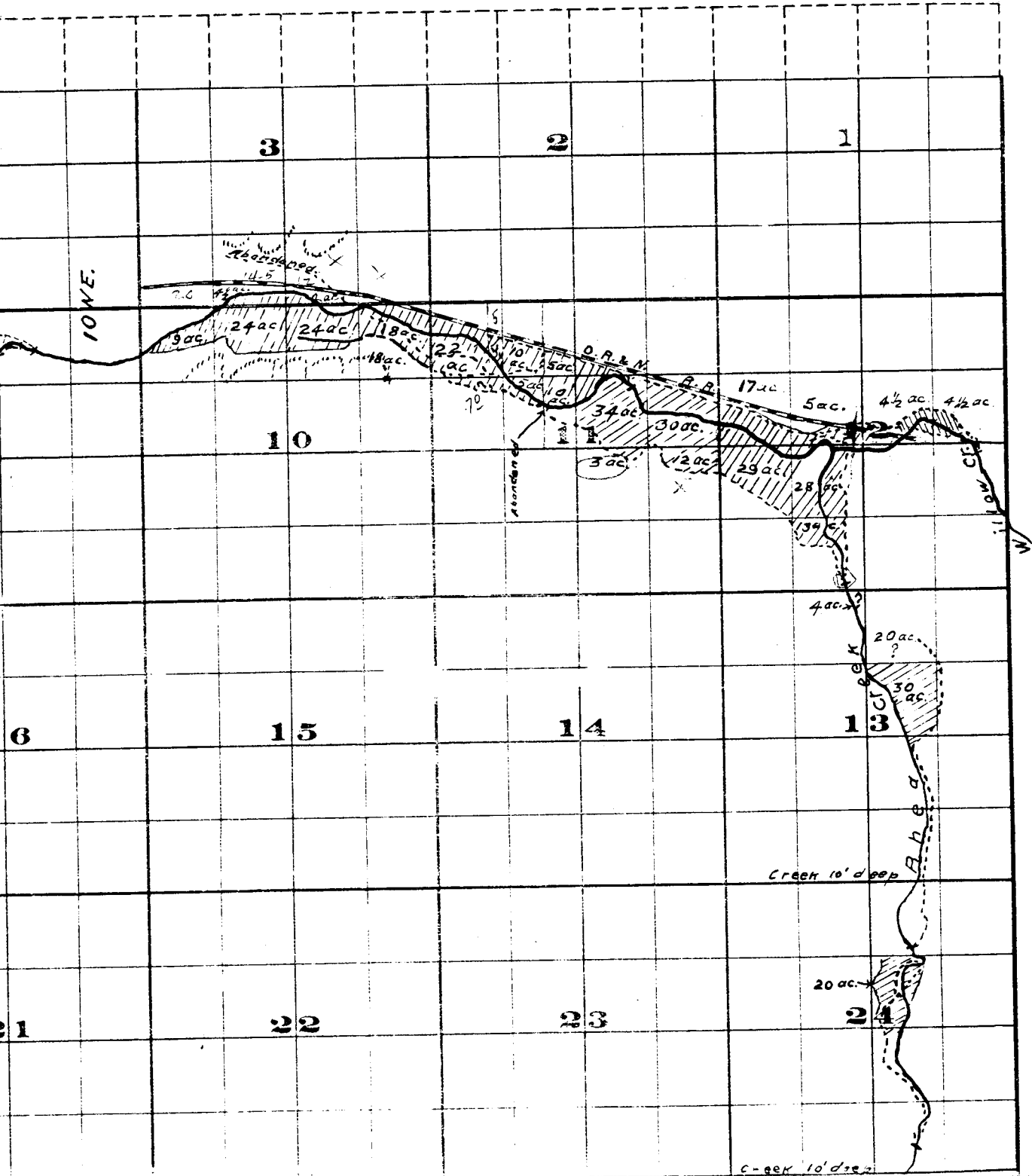
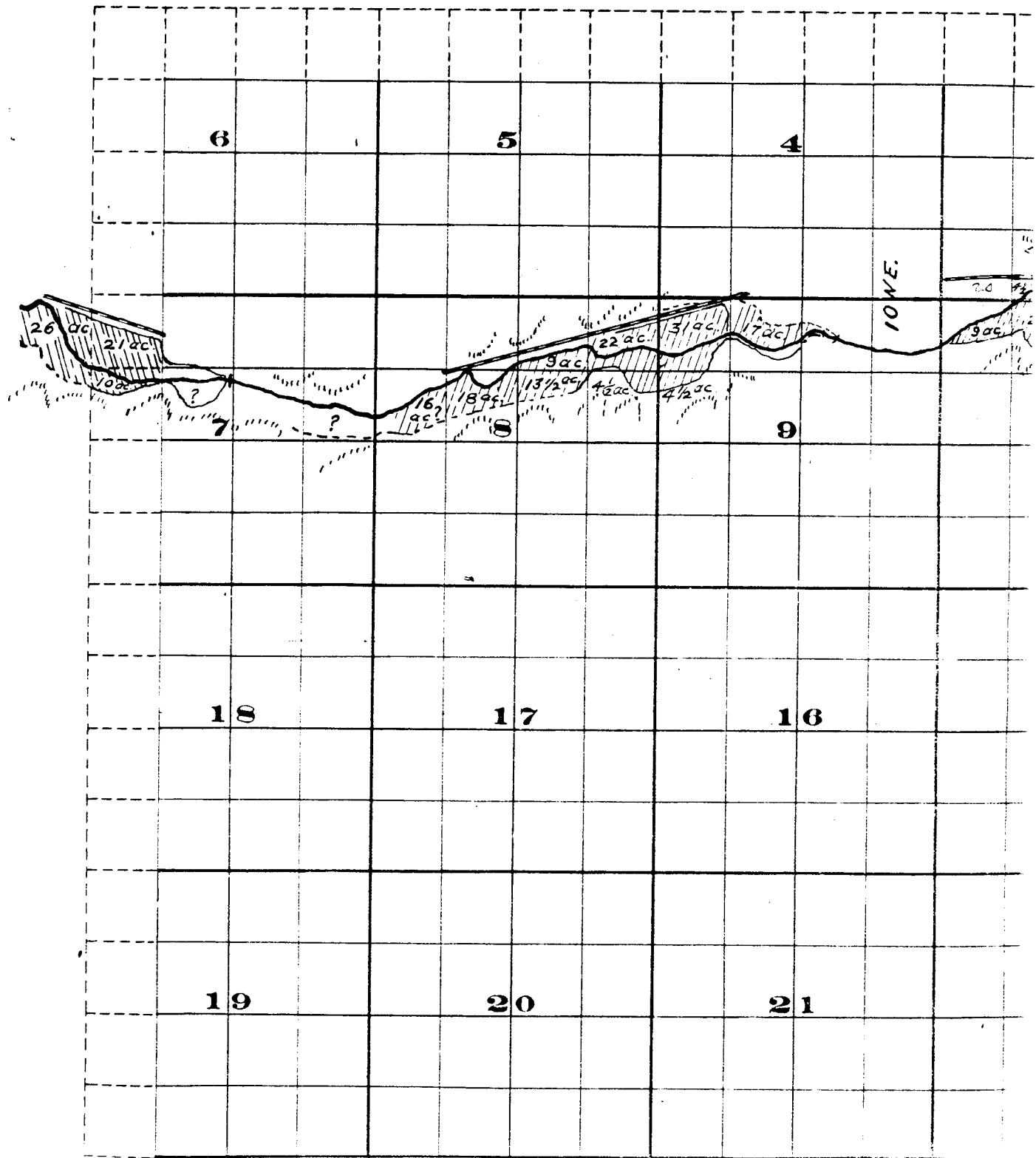


Range 24 E.W.M.

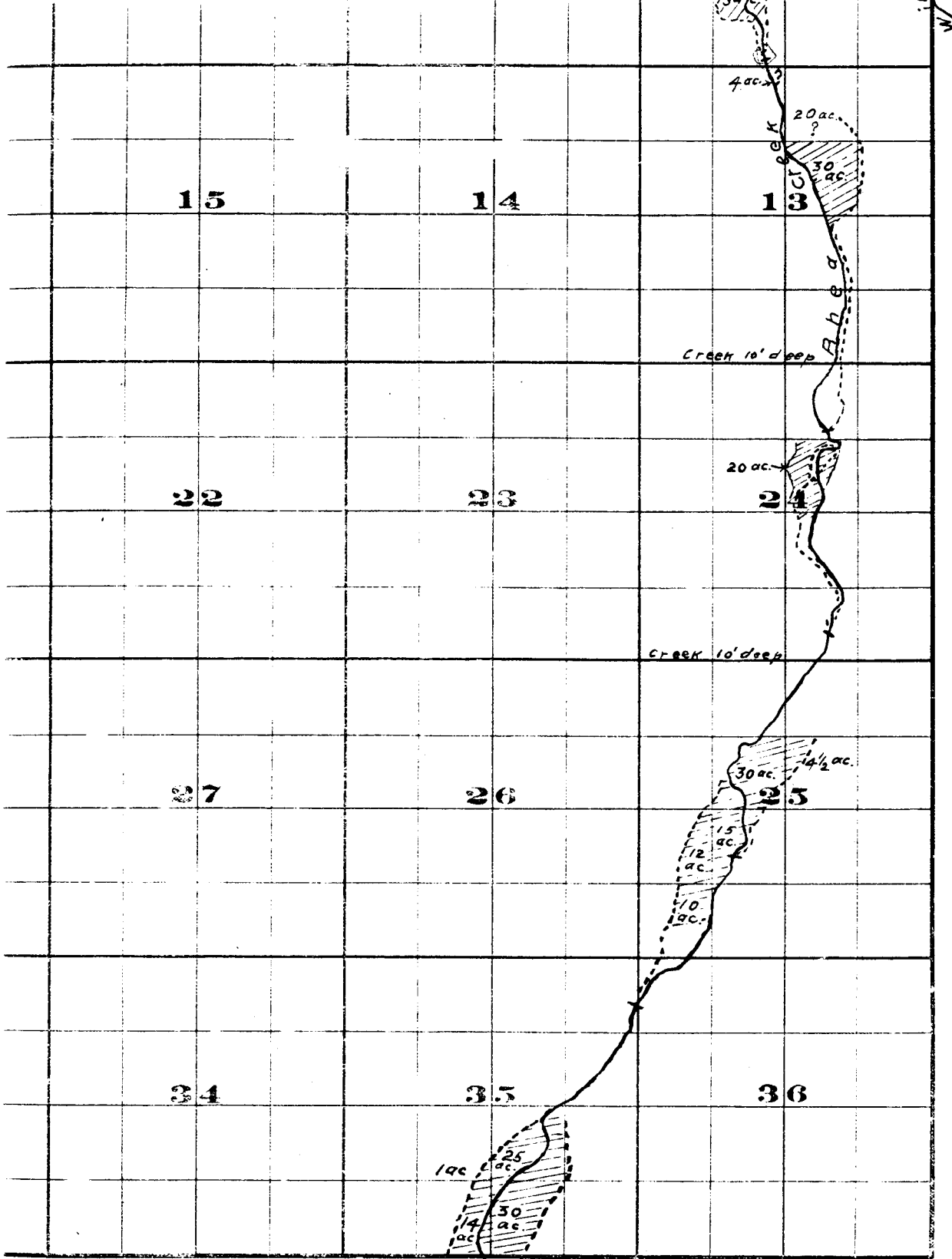


Township 15.



	18		17		16		15	
	19		20		21		22	
	30		29		28		27	
	31		32		33		34	

Surveyed by R.D. Cooper July 1909
John H. Lewis - State Engineer
Examined July 14, 1909.



FROM OFFICE OF THE STATE ENGINEER, SALEM, OREGON

Willow Creek Adjudication.

1 S. 24 E

R. 1 E 37 E