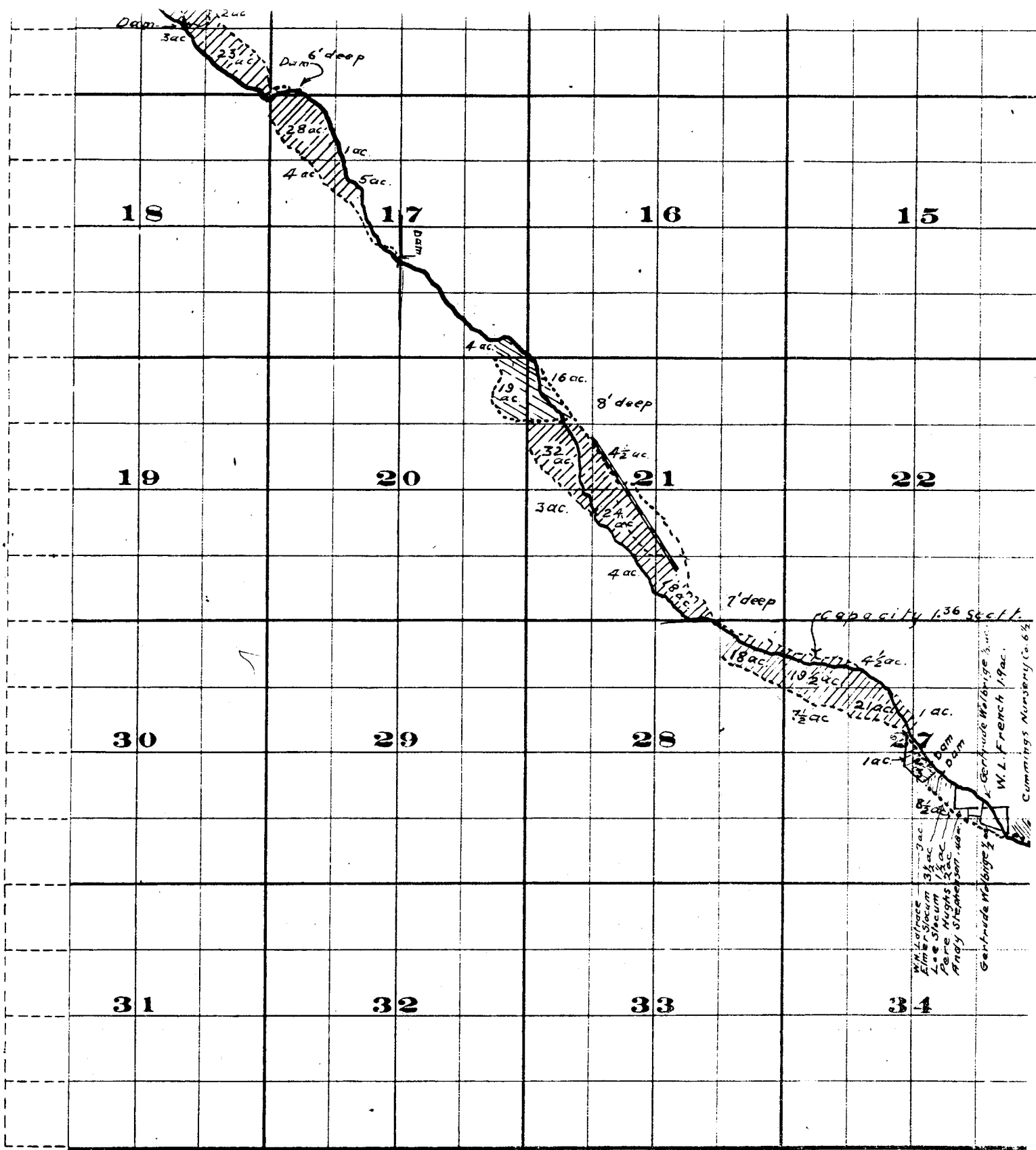


Willow Creek Adjudication

Part 35.26
25.26



THE B. & BRISTOL CO., PRINTERS & BOUNDERS, CHICAGO, ILL.

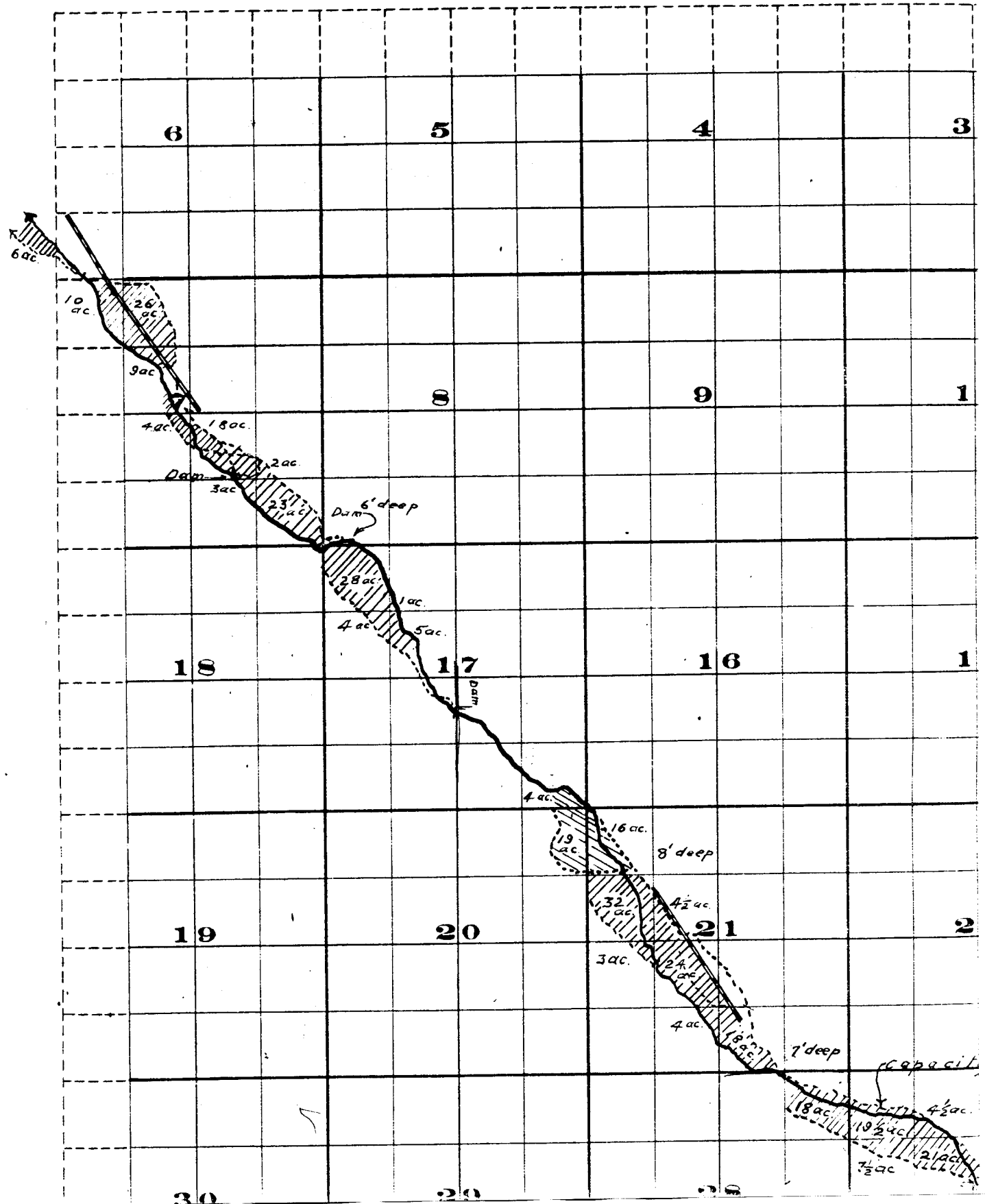
Surveyed by R.D. Cooper July 1909

John H. Lewis - State Engineer.

Examined July 14, 1909.



Township 2 S.



Range 26 E. W. M.

