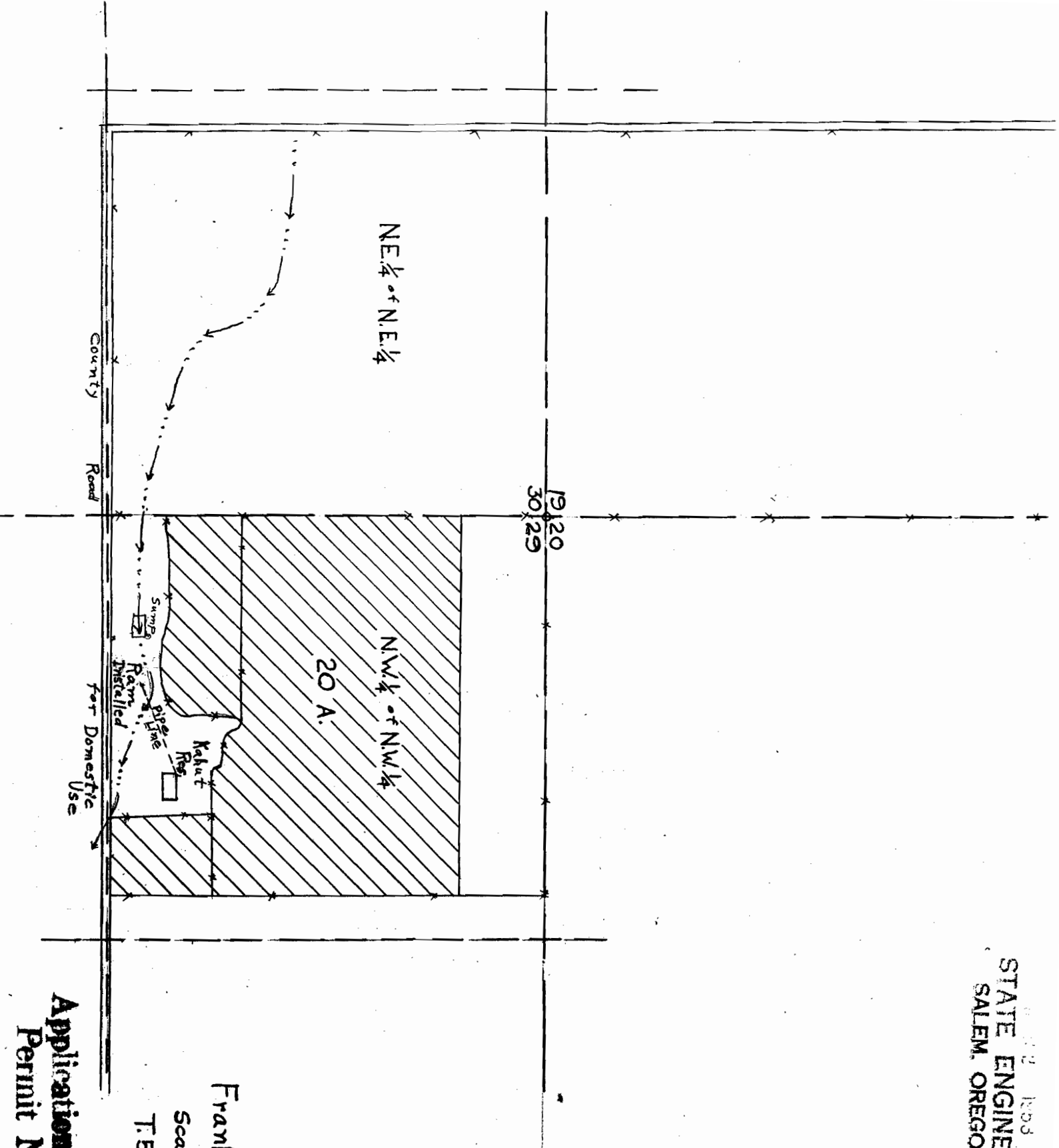


STATE ENGINEER
SALEM, OREGON



NE 1/4 of NE 1/4

19120
30x29

NW 1/4 of NW 1/4
20 A.

County Road

Pump installed for Domestic Use

Frank Kahut
Scale: 1"=400'
T.S.S. R.I.W.

Application No. 25923
Permit No. 21917