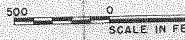


15 14  
22 23

SUMMARY

Sec. 23, NW <sup>4</sup> NW <sup>4</sup> , T. 13 S., R. 29 E.	0.06 Ac.
Sec. 23, NE <sup>4</sup> NW <sup>4</sup> , T. 13 S., R. 29 E.	3.96 Ac.
Sec. 23, SW <sup>4</sup> NW <sup>4</sup> , T. 13 S., R. 29 E.	2.47 Ac.
Sec. 23, SE <sup>4</sup> NW <sup>4</sup> , T. 13 S., R. 29 E.	8.33 Ac.
Sec. 23, NW <sup>4</sup> SW <sup>4</sup> , T. 13 S., R. 29 E.	9.36 Ac.
Sec. 23, NE <sup>4</sup> SW <sup>4</sup> , T. 13 S., R. 29 E.	29.00 Ac.
Sec. 23, SW <sup>4</sup> SW <sup>4</sup> , T. 13 S., R. 29 E.	31.70 Ac.
Sec. 23, SE <sup>4</sup> SW <sup>4</sup> , T. 13 S., R. 29 E.	40.00 Ac.
Sec. 26, NW <sup>4</sup> NW <sup>4</sup> , T. 13 S., R. 29 E.	3.74 Ac.
Sec. 26, NE <sup>4</sup> NW <sup>4</sup> , T. 13 S., R. 29 E.	16.20 Ac.
<b>Total</b>	<b>144.82 Ac.</b>

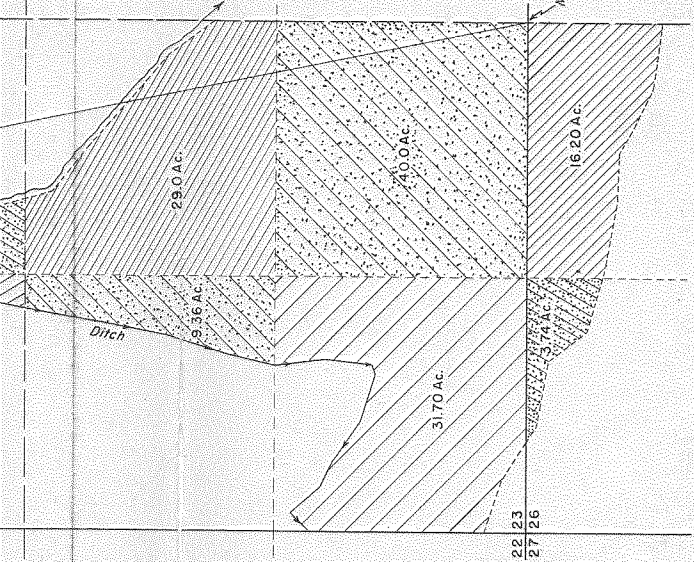
*Application map prepared from 1/2  
Soil Conservation Service November  
file at the Monument Soil Conserv  
Canyon City, Oregon.*



T 13 S



Marked Rock



Application No. 26879  
Permit No. 21108

ation map prepared from field notes taken by the  
conservation Service November, 1951. Notes are on  
the Monument Soil Conservation Service Office,  
n City, Oregon.



RECEIVED  
STATE ENGINEER  
SALM OREGON

WATER RIGHT APPLICATION MAP  
ROBT. W. KOBLE & NANCY L. KOBLE PROPERTY  
MT VERNON, GRANT COUNTY, OREGON

U. S. DEPARTMENT OF AGRICULTURE  
SOIL CONSERVATION SERVICE  
ROBERT M. SALTER, CHIEF

PACIFIC REGION RECOMMENDED J. H. CHRIST, DIRECTOR

ENGINEERING APPROVAL: \_\_\_\_\_ REGIONAL ENGINEER

COMPILED	TRACED	CHECKED	DATE	DRAWING NO.
ACLJ	LPL	ACLJ	11-28-51 11-8-51	7-N-13401