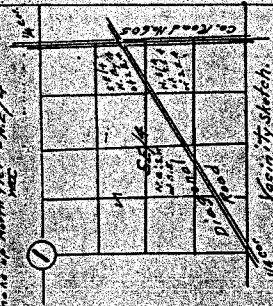


U-421
C-23518

Plat showing
that portion of the
S.E.A. N.E. 1/4, S.E. 1/4, and
N.E. 1/4, S.E. 1/4, of
Sec. 1 T. 4 N., R. 28. E. N. M.
Lying south of the Diagonal
Road. Also three descriptive
tracts located therein.
Scale: 1 inch = 100 feet.
Surveyed, staked, and plotted,
June 1948, by N.E. O. Criger.
The line shown is to 25.00 feet
from the line shown in the plat.



Commission No. U-421
C-23518

