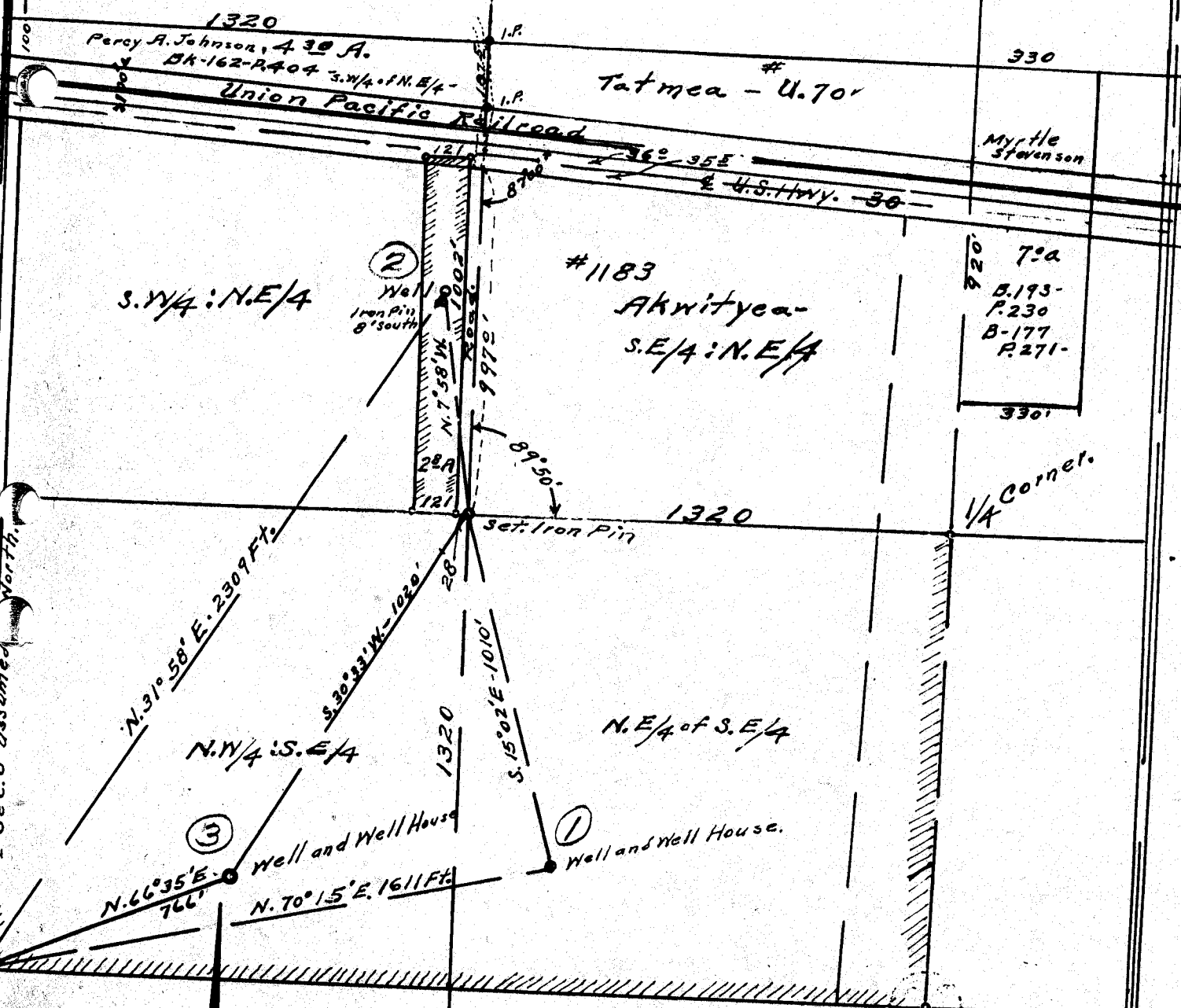


S.W. 1/4 of N.E. 1/4

BK. 177-P. 271-
Except - 72a.



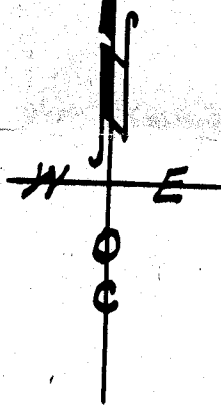
S.W. 1/4 : N.E. 1/4

#1183
Akwtiyea-
S.E. 1/4 : N.E. 1/4

72a
B. 193-
P. 230
B. 177
P. 271-
330'

1/4 Corner.

E. Sec. 8 - assumed North.



Map showing
Well Locations in S.E. 1/4 of Sec. 8, T. 2N., R. 33E., W.M.
owned and operated by
B. F. Bowman and Richard Purchase
Surveyed, staked & plotted April - 1952.
Revised & supplemented - Sept. 1952.
By W. E. O. Criger.
Scale: 1 in. = 400 ft.
Application for wells and Upatilla River
Pump site, and water right by
Bowman & Purchase.

Nh. 3876 -

89