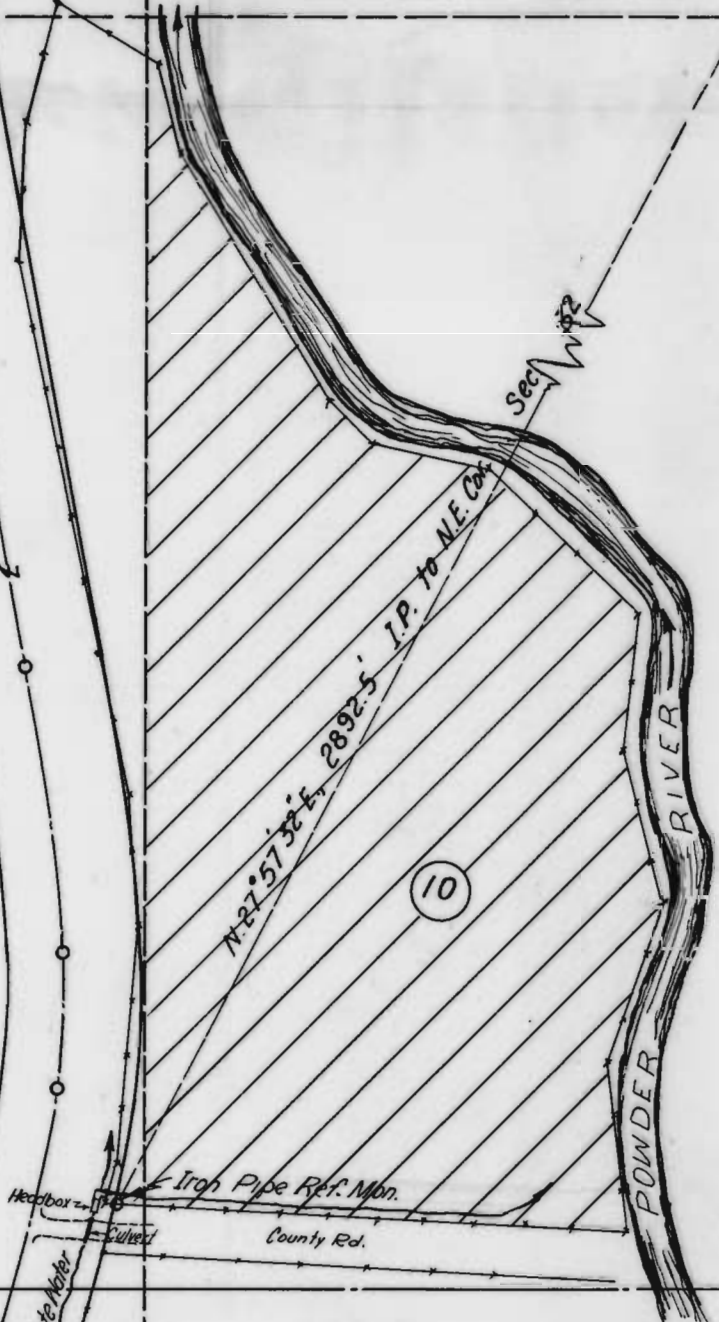


BAKER-UNITY HWY.

Elk Cr. & Powder River Waste Water



SE 1/4 NE 1/4 Sec. 32, T.9 S., R. 40 E., W.M.

RECEIVED
JUL 2 1953
STATE ENGINEER
SALEM, OREGON

STATE HWY. COORDINATES:
P.S. 429+87.65
49,770.85 N.
18,170.41 E.

MAP TO ACCOMPANY APPLICATION TO APPROPRIATE
WASTE WATER FOR IRRIGATION

Application No. 28586 SURVEYED JUNE 1, 1953 SCALE 1" = 200'
Permit No. 22525





BAKER-UNITY HWY.

Elk Cr. & Powder River Waste Water

Iron Pipe Ref. Man.
County Rd.

N. 21° 57' 30" E. 2892.5' I.P. to N.E. Cr.

10

POWDER RIVER

SE 1/4 NE 1/4 Sec. 32, T.9 S., R. 40 E., W.M.

RECEIVED
MAY 2 1948
STATE ENGINEER
SALMON, OREGON

STATE HWY. COORDINATES:
P.S. 429+87.65
49,770.85 N.
18,170.41 E.

MAP TO ACCOMPANY APPLICATION TO APPROPRIATE WASTE WATER FOR IRRIGATION

Application No. 28586 SURVEYED JUNE 1, 1953 SCALE 1" = 200'
Permit No. 28586





BAKER-UNITY HWY.

Sec 32

SE 1/4 NE 1/4 Sec. 32, T.9 S., R. 40 E., W.M.

N 21° 57' 30" E 2892.5' I.P. to N.E. Cor.

10

POWDER RIVER

Iron Pipe Ref. Mon.
Headbox
Culvert
County Rd.

STATE HWY COORDINATES:
P.S. 429+87.65
49,770.85 N.
18,170.41 E.

Elk Cr. & Powder River Waste Water

MAP TO ACCOMPANY APPLICATION TO APPROPRIATE WASTE WATER FOR IRRIGATION

Application No. 28586 SURVEYED JUNE 1, 1953 SCALE 1" = 200'
Permit No.

