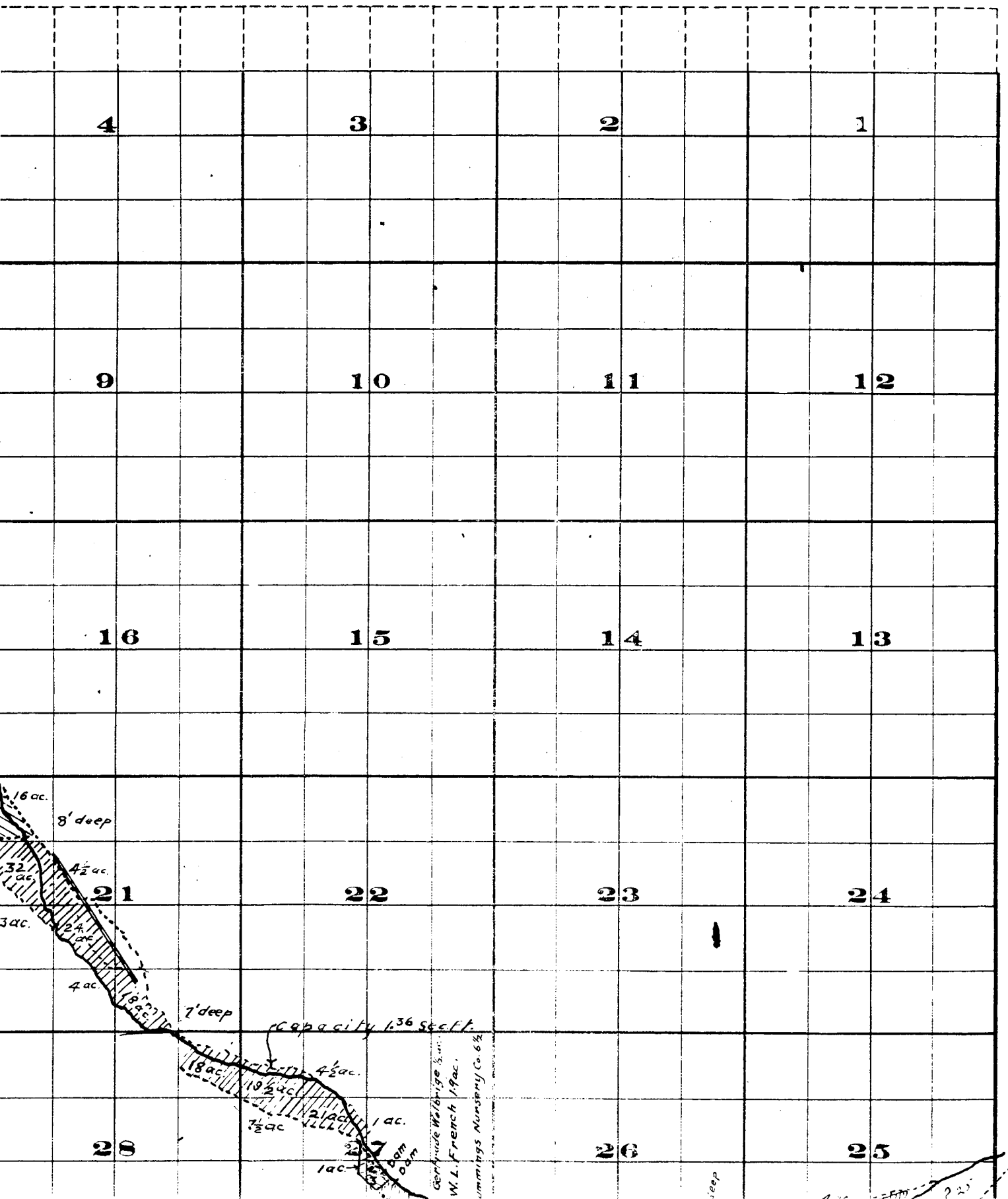
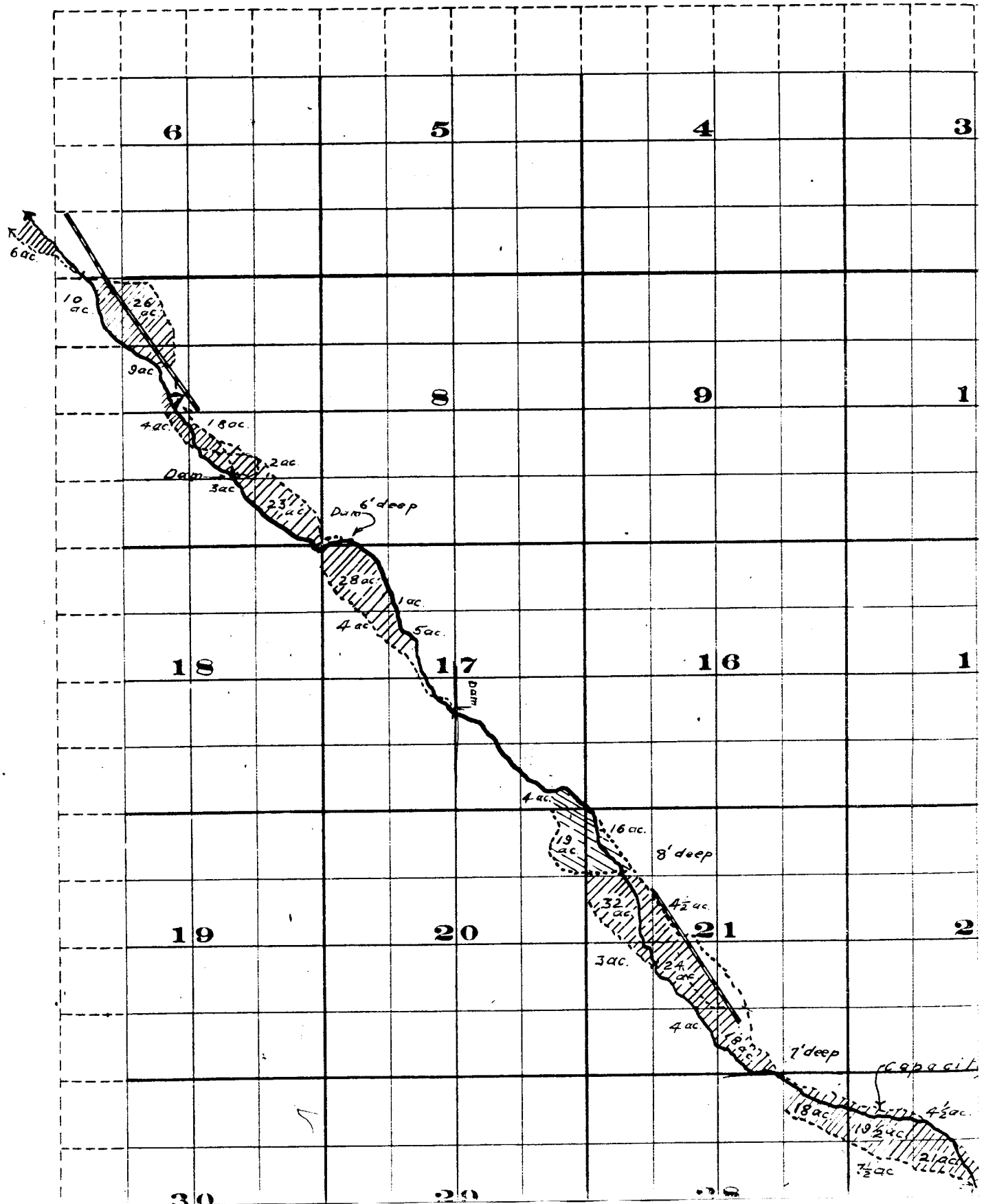
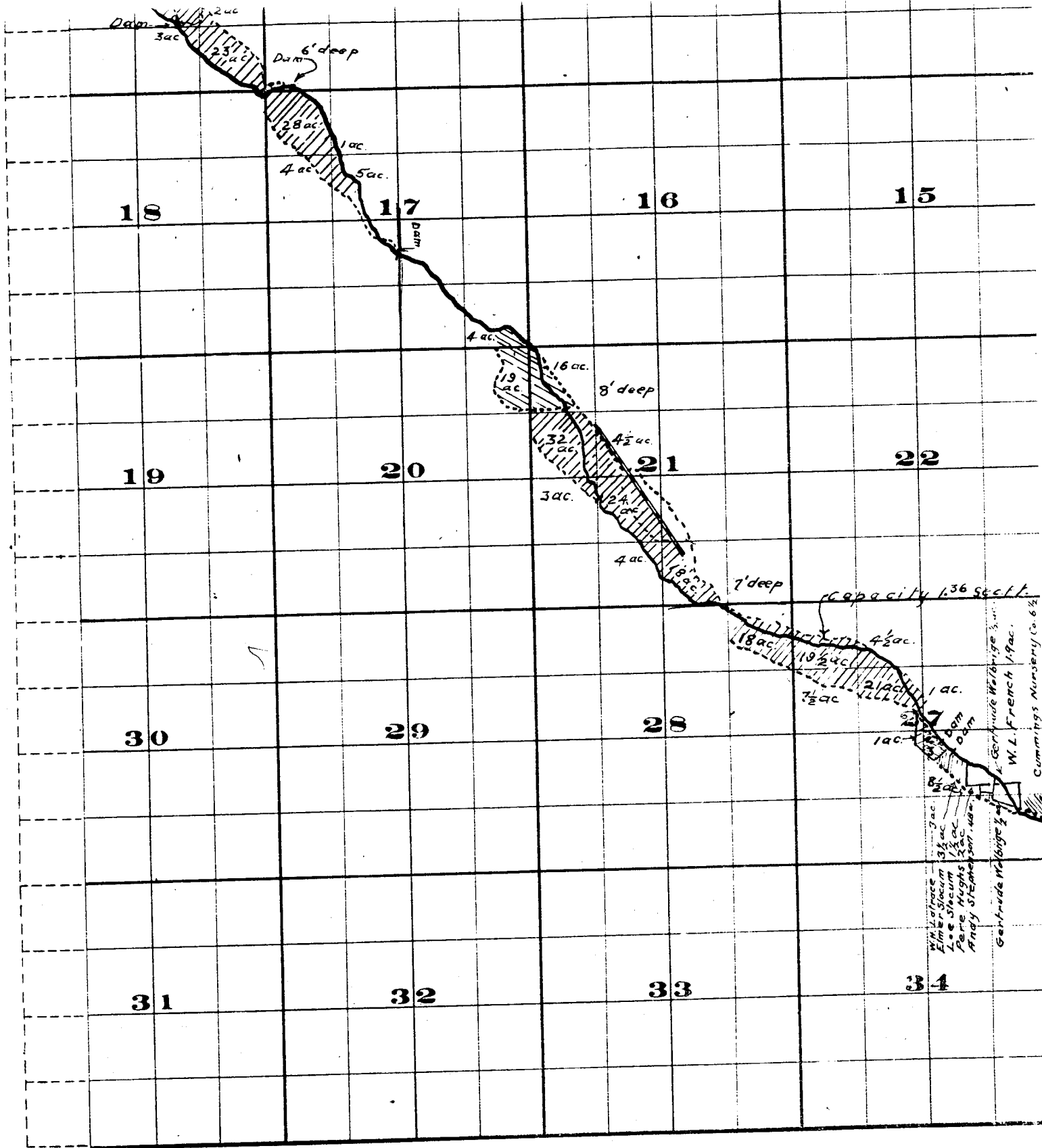


Range 26 E. W. M.



Township 2 S.





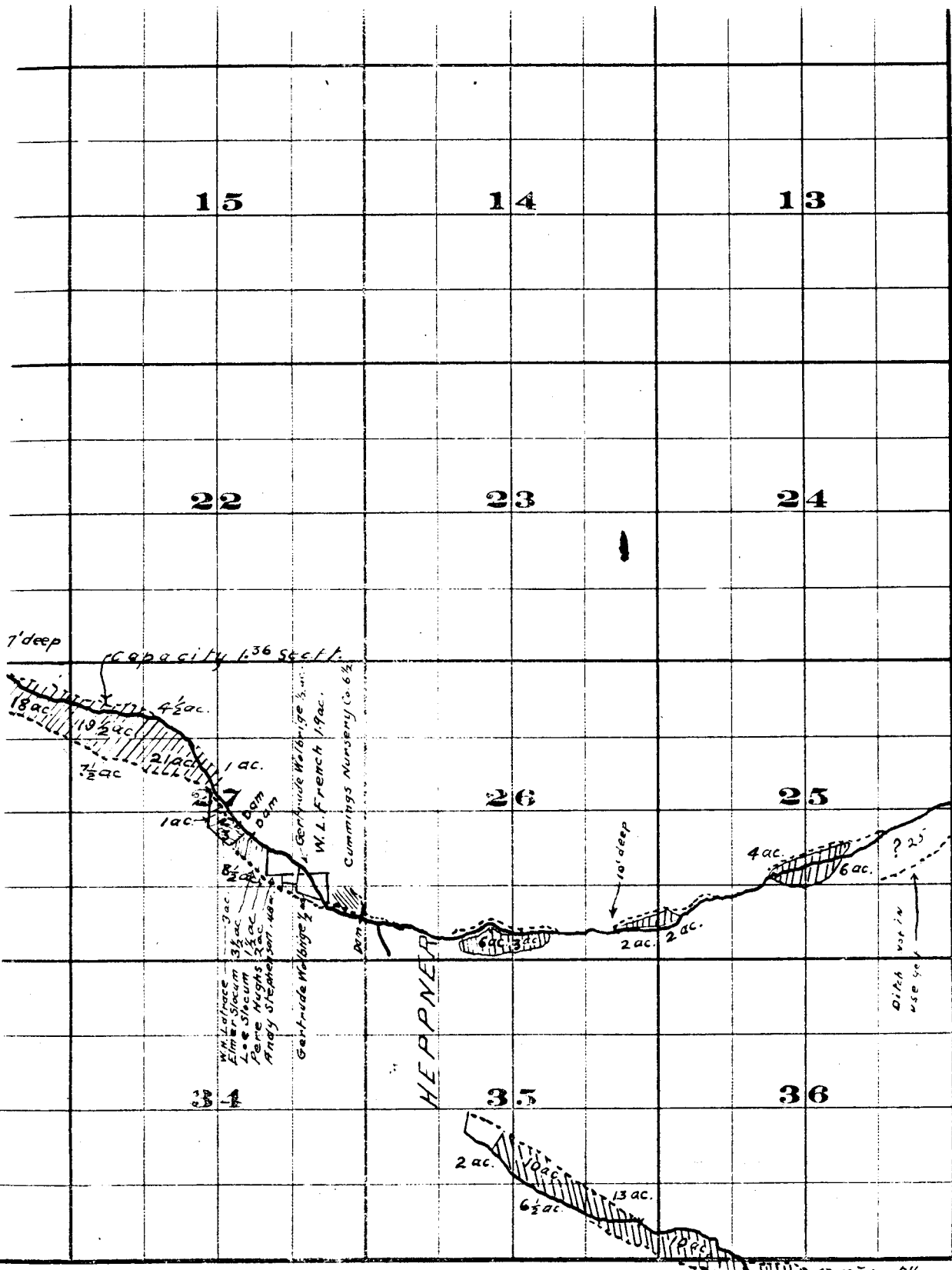
THE S. BRISTOL CO., PRINTERS & BOUNDERS, CHRYSTIE ST. W.

Surveyed by R.D. Cooper July 1909

John H. Lewis - State Engineer.

Examined July 14, 1909.





FROM OFFICE OF THE STATE ENGINEER

Willow Creek Adjudication



Part 3 S. 26
2 S. 26