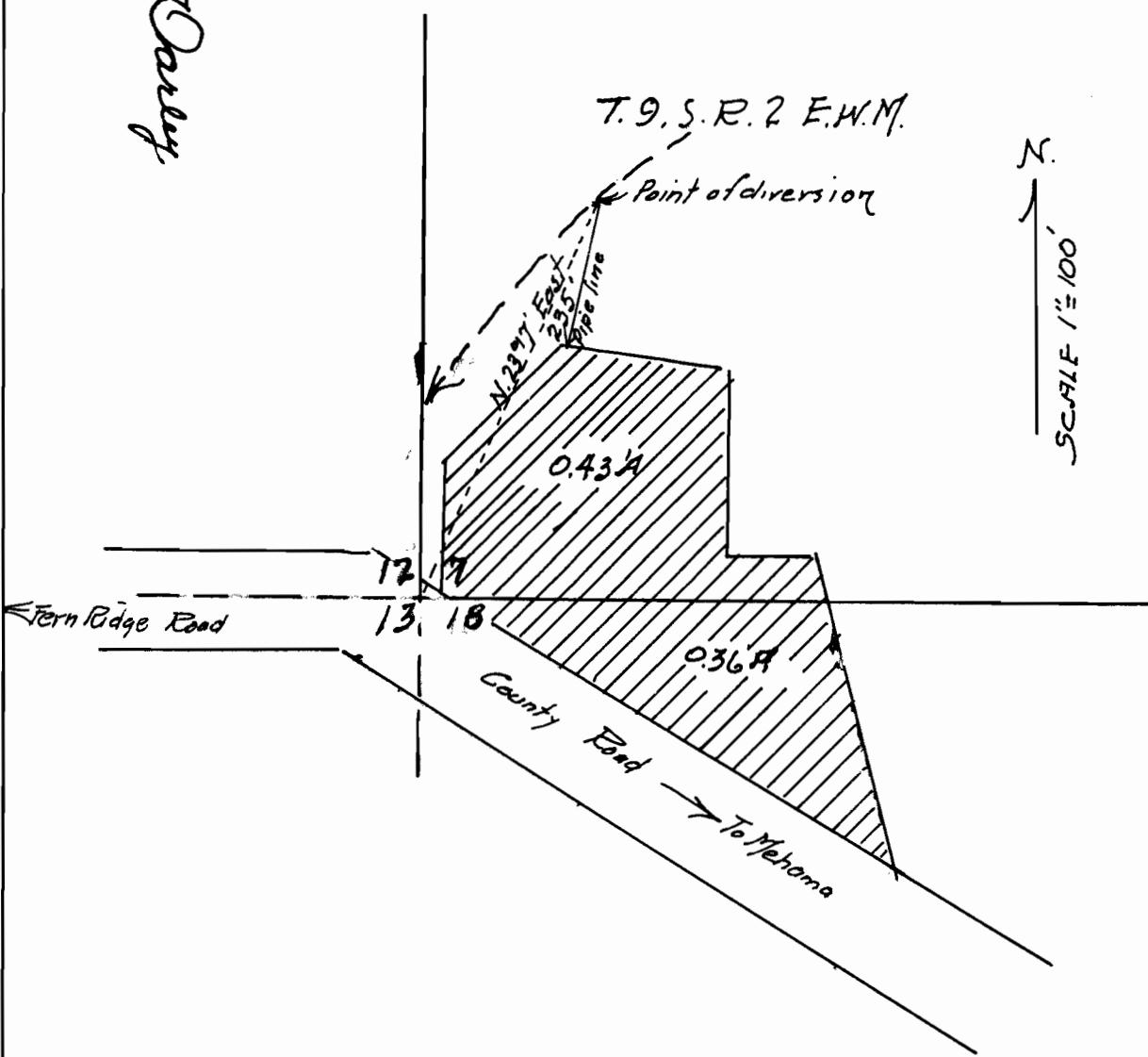



Map accompanying the application, made by by Louis W. Kirkland, to appropriate water from a spring branch tributary to Stout Creek (North Santiam drainage system).

This is to certify that this map was made by me from notes taken during a field survey made by me on June 9, 1955 and that it correctly represents the location of land area proposed to be irrigated; also the location of the diversion point.

Signed by *W. T. Darby*

W. T. Darby



LEGEND: Area to be irrigated 

Application No. 30096
Permit No. 23715