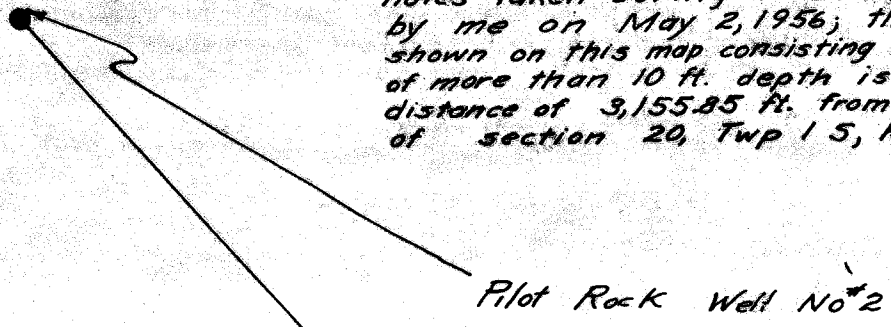
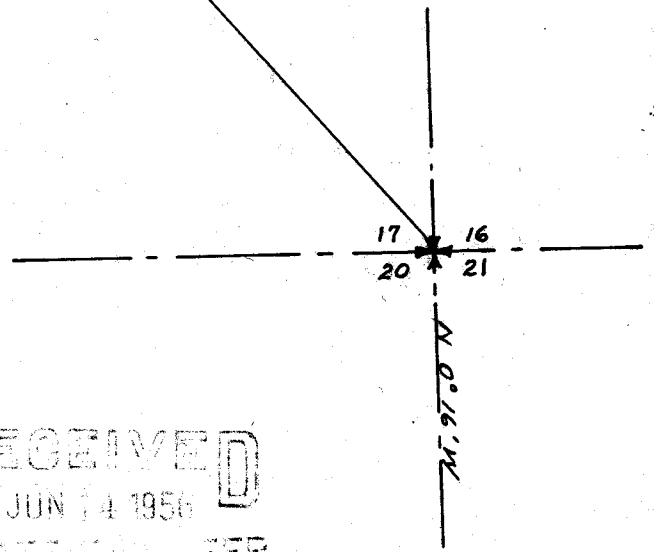


E 1665.75
USCG

I, Stanley G. Wallulis of Pendleton, Oregon do hereby certify that this map was made from notes taken during an actual survey made by me on May 2, 1956; that the monument shown on this map consisting of a 10" well casing of more than 10 ft. depth is N 41° 13' 35" W a distance of 3,155.85 ft. from the N.E. Corner of section 20, Twp 1 S, R 32 E W M.



N 41° 13' 35" W
3,155.85 ft.



RECEIVED
JUN 14 1956
STATE ENGINEER
SALEM, OREGON

Survey for City of Pilot Rock

SCALE: 1" = 400'	DATE: May 8, 1956
WALL AND TENNESON Engineers	
The Dalles	Oregon

Application No. G-402
Permit No. G-279