

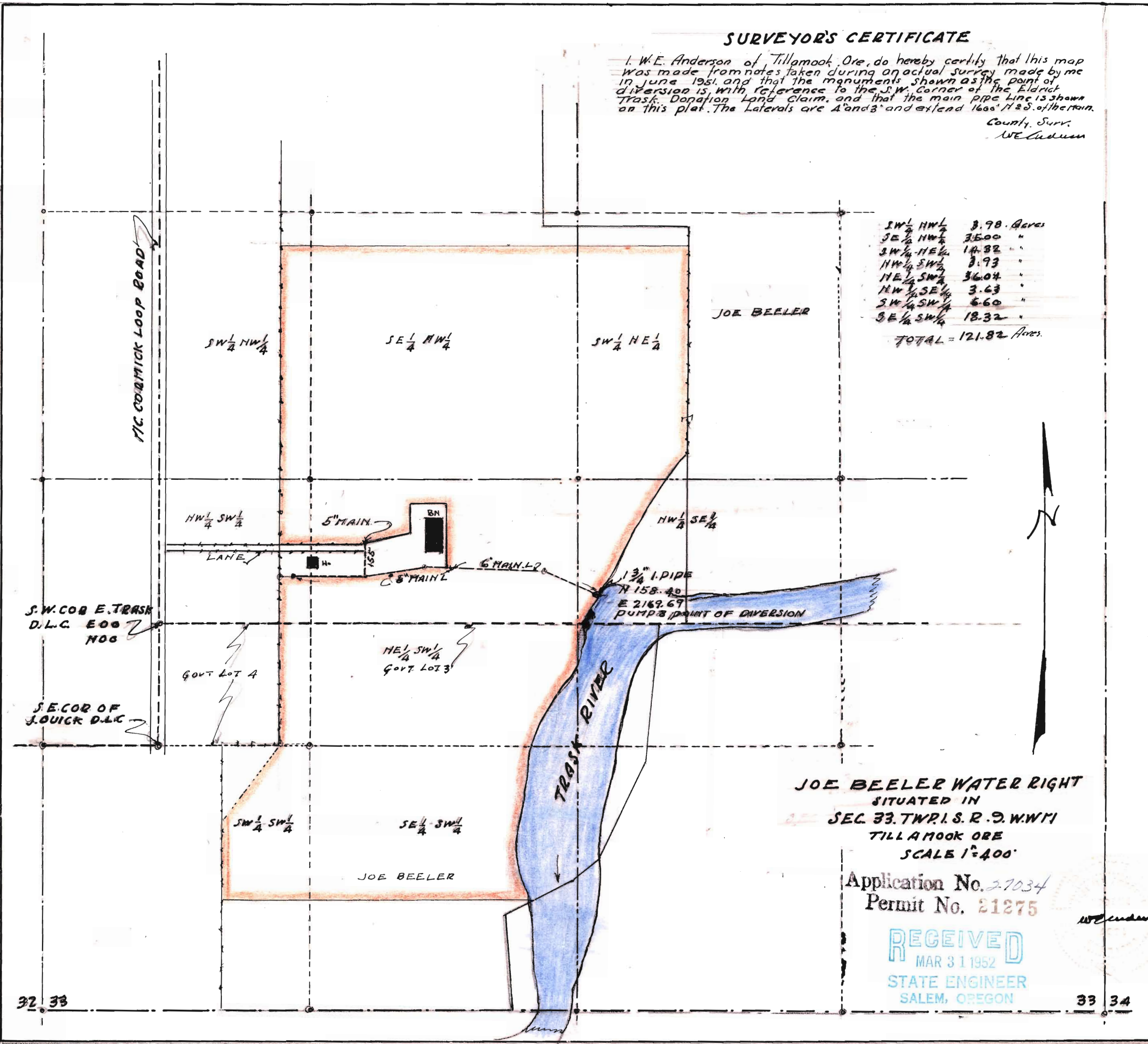
SURVEYOR'S CERTIFICATE

I, W.E. Anderson of Tillamook, Ore, do hereby certify that this map was made from notes taken during an actual survey made by me in June 1951, and that the monuments shown as the point of diversion is, with reference to the S.W. Corner of the Eldrick Trask Donation Land Claim, and that the main pipe line is shown on this plat. The Laterals are A and B and extend 1600' N & S. of the main.

County, Surv.
W.E. Anderson

SW 1/4 NW 1/4	3.98 Acres
SE 1/4 NW 1/4	35.00 "
SW 1/4 NE 1/4	14.32 "
NW 1/4 SW 1/4	3.93 "
NE 1/4 SW 1/4	36.04 "
NW 1/4 SE 1/4	3.63 "
SW 1/4 SW 1/4	6.60 "
SE 1/4 SW 1/4	18.32 "

TOTAL = 121.82 Acres.



JOE BEELER WATER RIGHT
SITUATED IN
SEC. 33. TWP. 1. S. R. 9. W. WM 1
TILLAMOOK ORE
SCALE 1"=400'

Application No. 27034
Permit No. 21275

RECEIVED
MAR 31 1952
STATE ENGINEER
SALEM, OREGON