

RECEIVED

FEB 17 1953

STATE ENGINEER
SALEM, OREGON

LEWIS FARM POND #1 STARKER FORESTS

T9S R5W S18

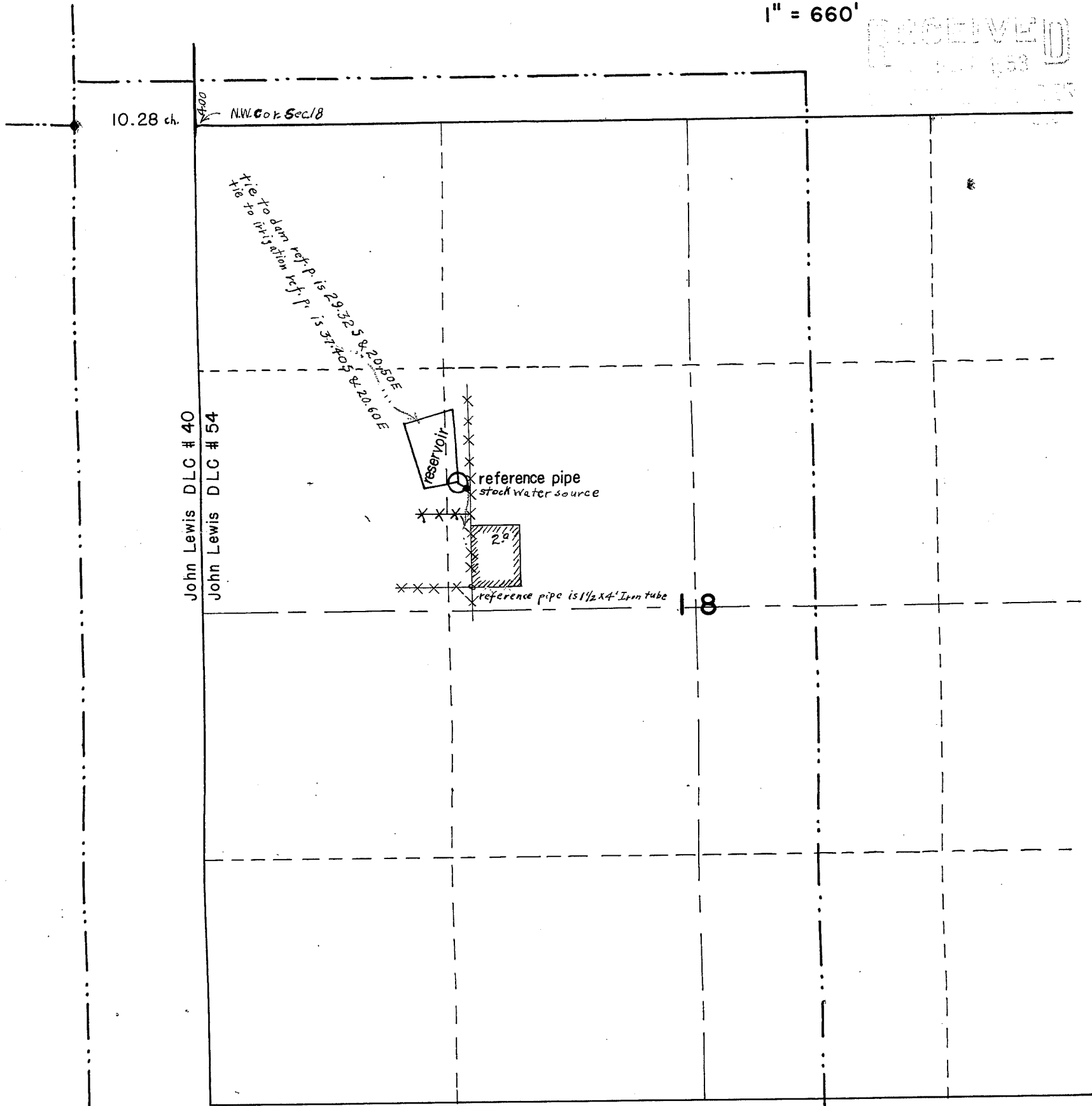
Mapped by

BRUCE & T. J. STARKER

Fall 1952

1" = 660'

RECEIVED



Application No. R-27745
 28266
 Permit No. R-1515
 22447