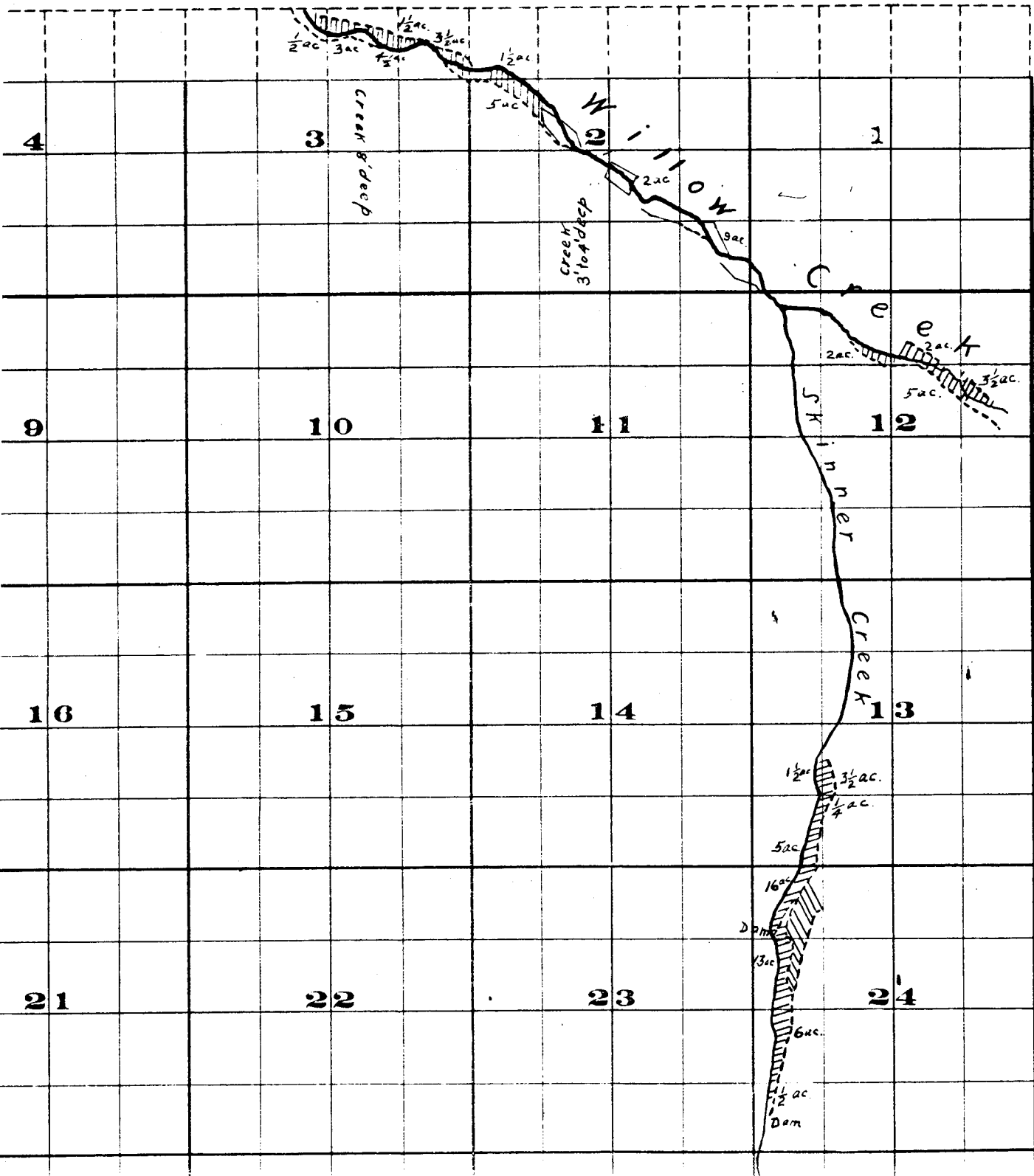
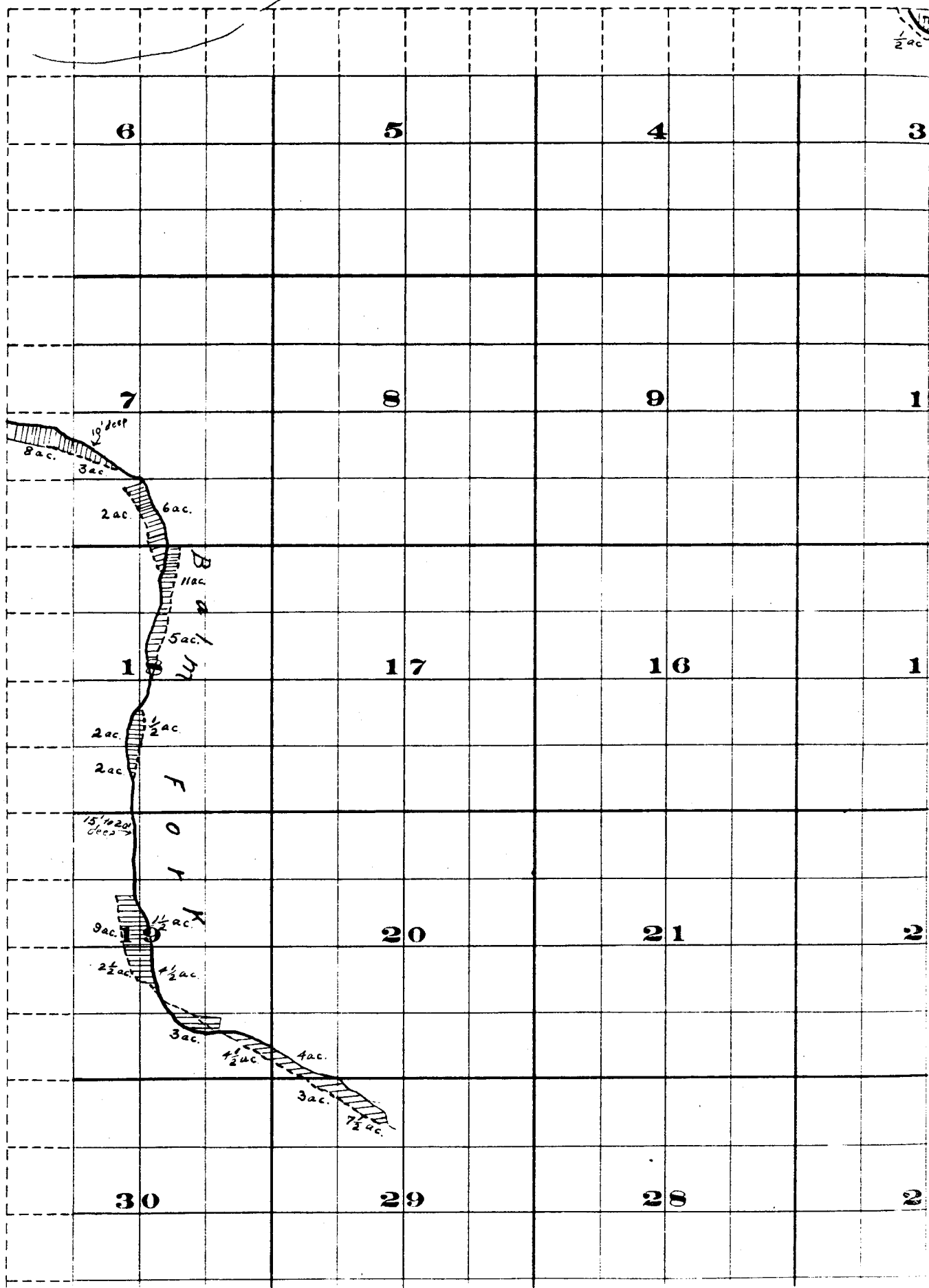
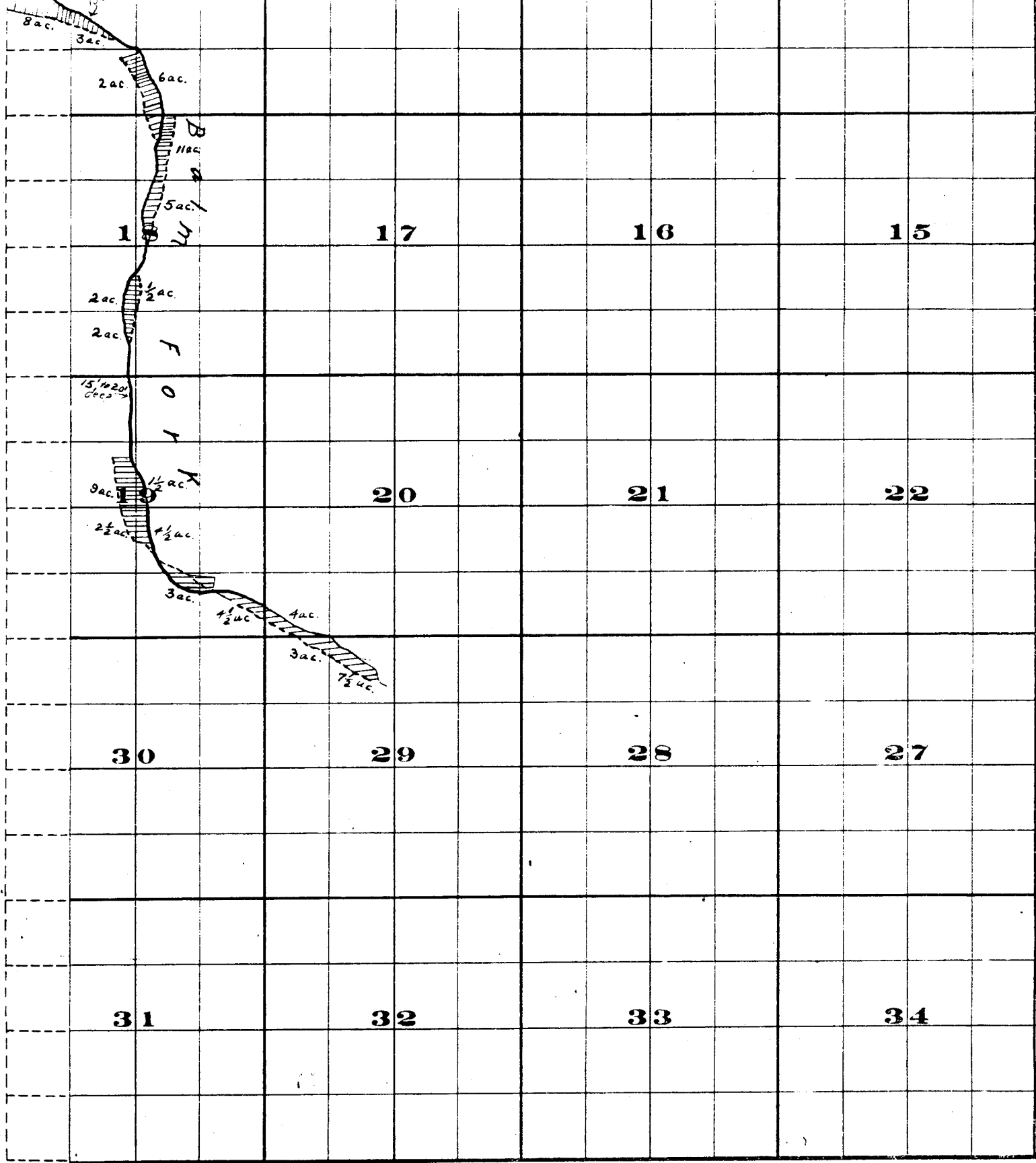


, Range 27 E.W.M.



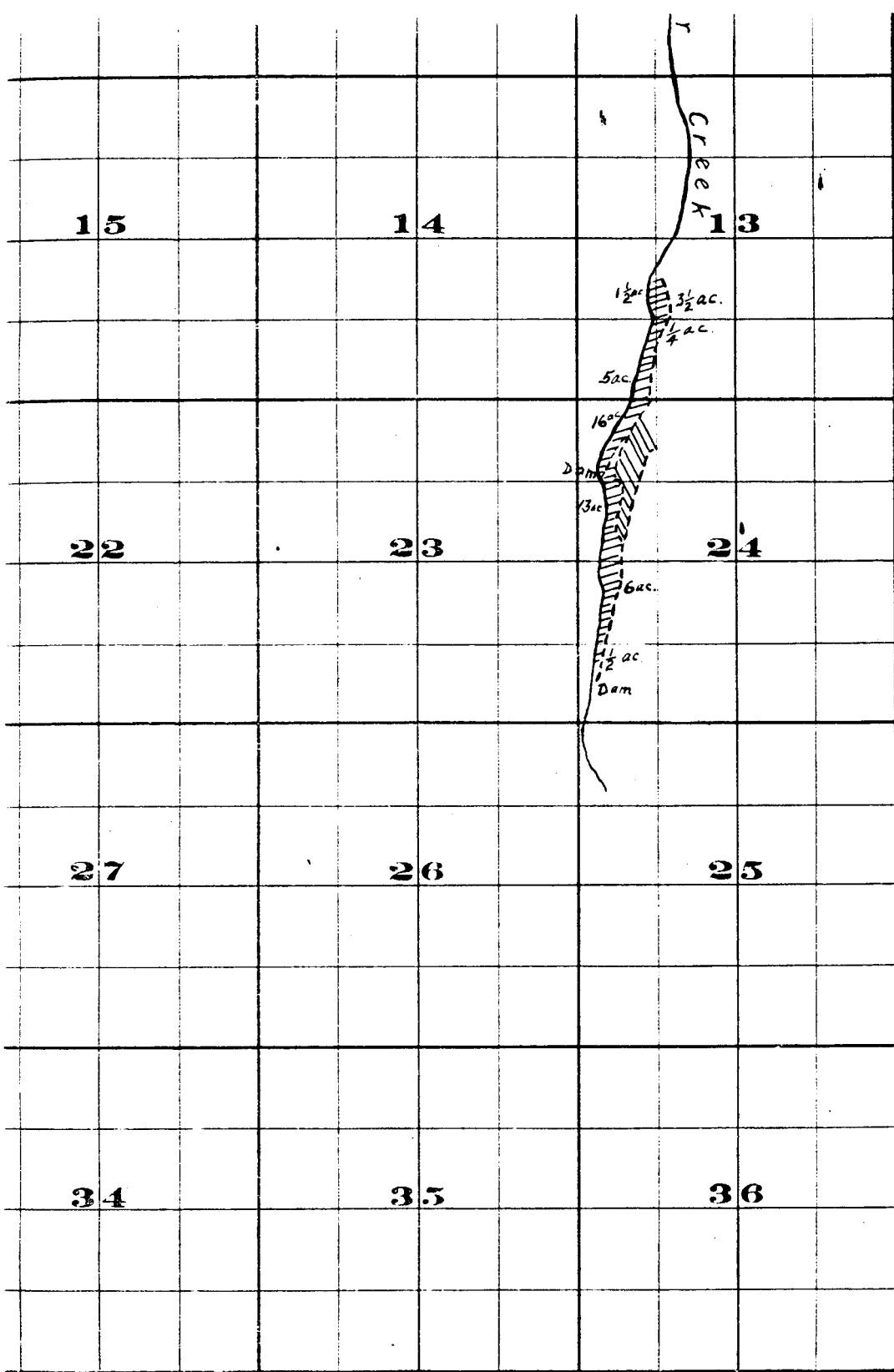
# Township 35





THE B. & BRISTOL CO. PRINTERS & BOUNDERS CHICAGO ILL.

Surveyed by H.K. Donnelly July 1909  
 Surveyed by R.D. Cooper July 1909  
 John H. Lewis - State Engineer  
 Examined, July 14, 1909.



FROM OFFICE OF THE STATE ENGINEER, SALEM, OREGON  
*Willow Creek Adjudication*

35.27E.