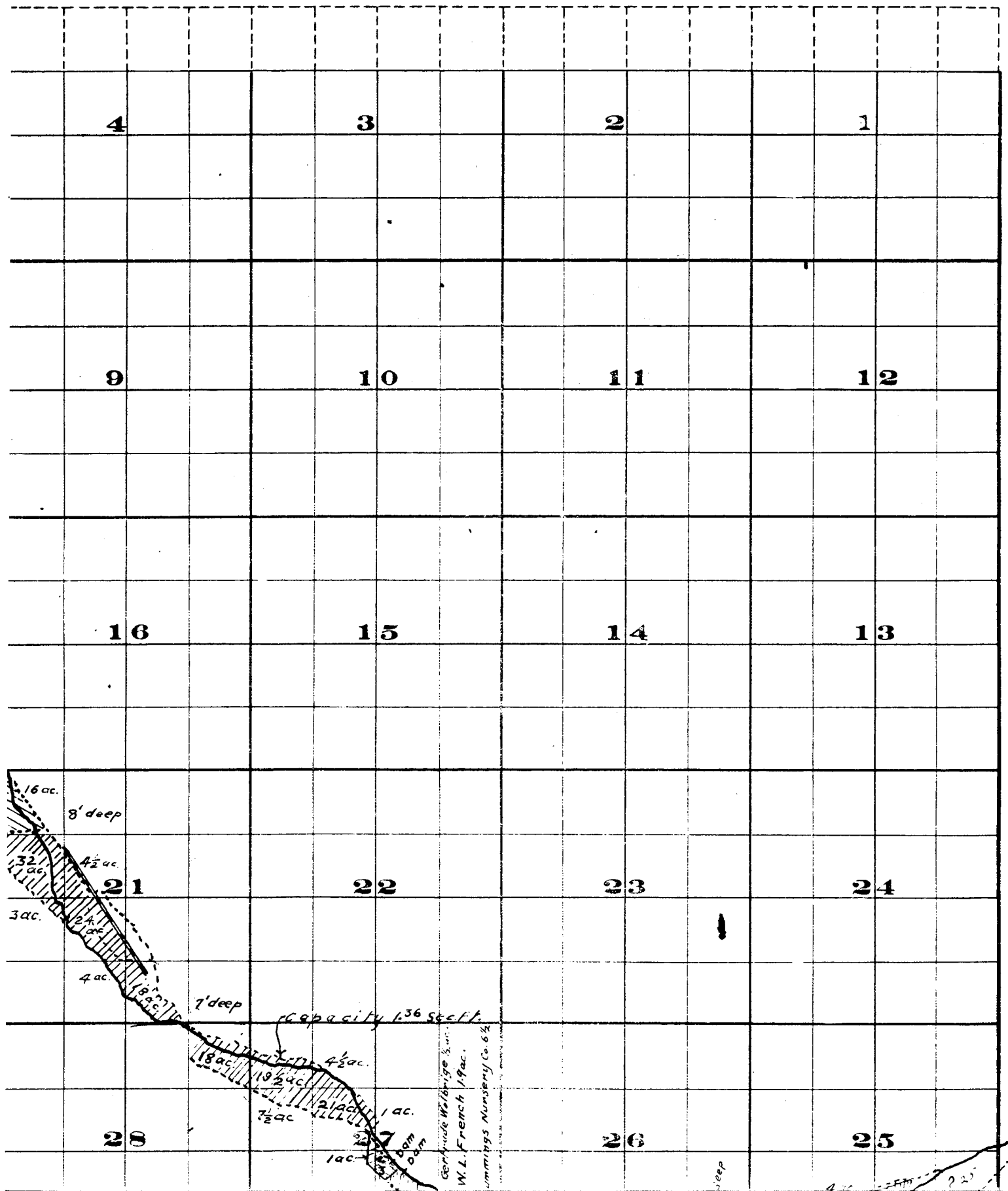


Range 26 E. W. M.



4

3

2

1

9

10

11

12

16

15

14

13

21

22

23

24

28

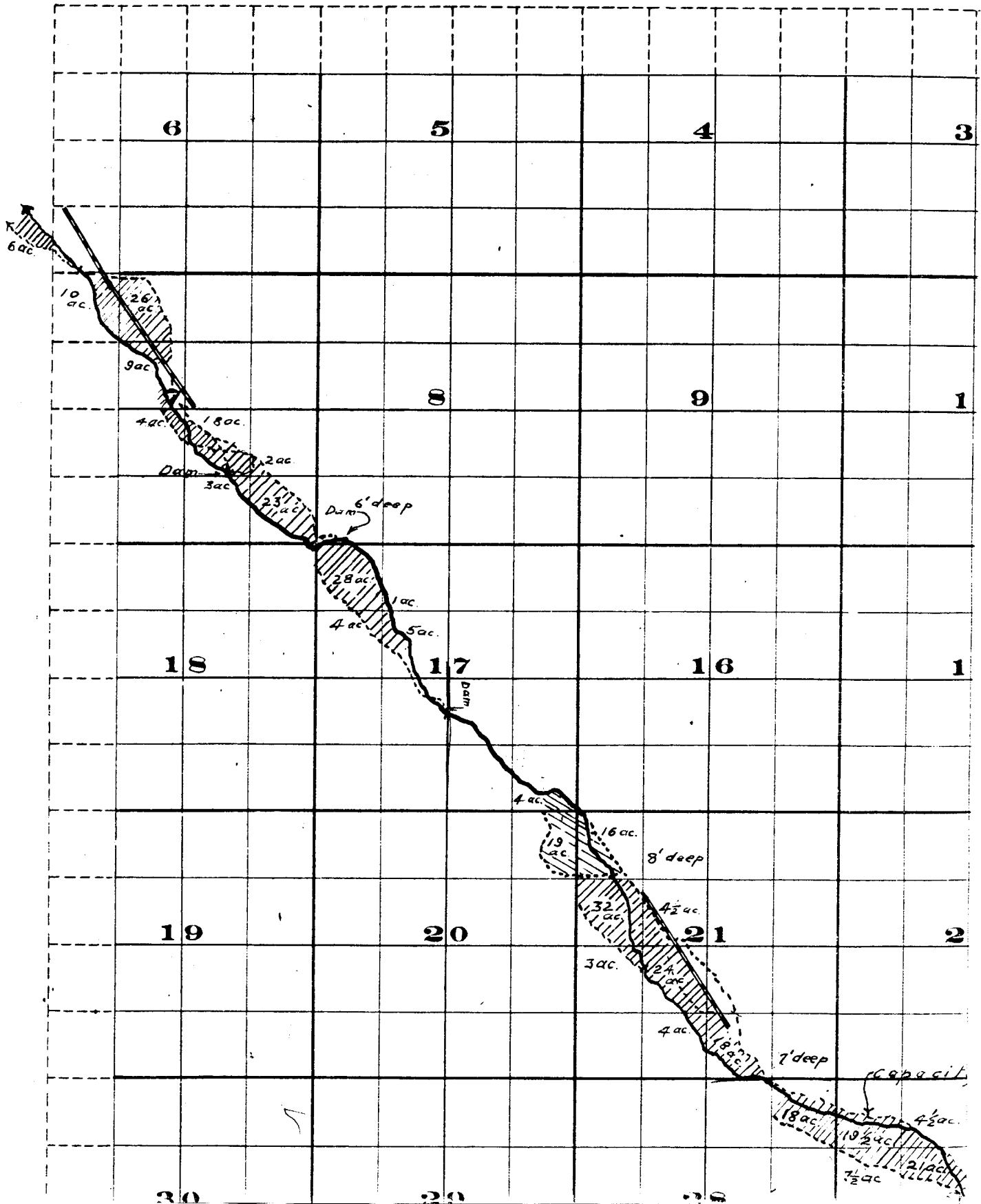
27

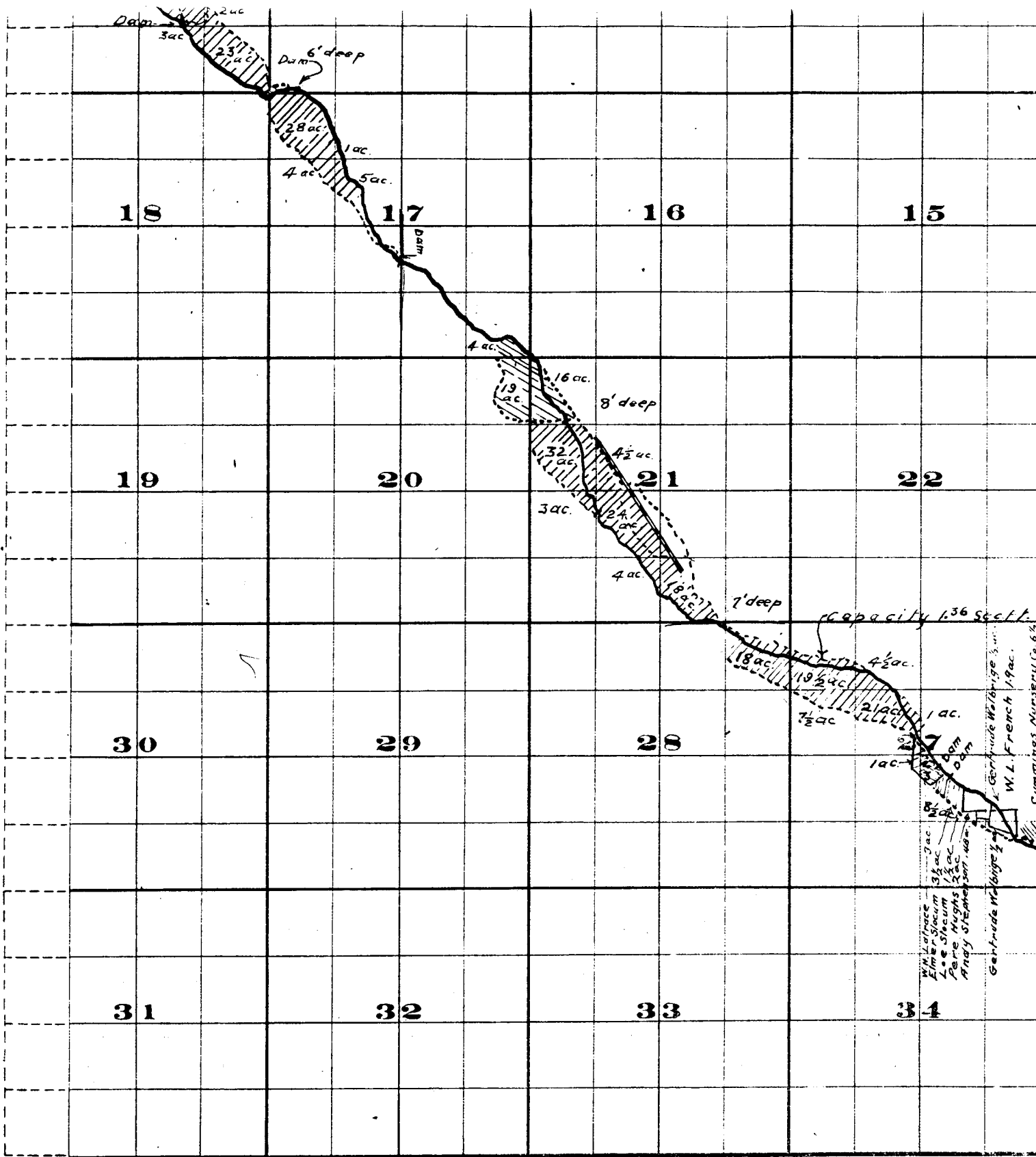
26

25

16 ac.
8' deep
32 ac.
4 1/2 ac.
3 ac.
4 ac.
7' deep
capacity 1.36 sec ft.
18 ac.
19 1/2 ac.
7 1/2 ac.
1 ac.
1 ac.
dam
0.8 am
Gerhardt Wehrige 3/4 ac.
W.L. French 1/4 ac.
Lummings Nursery Co. 6 1/2 ac.
steep

Township 2 S.

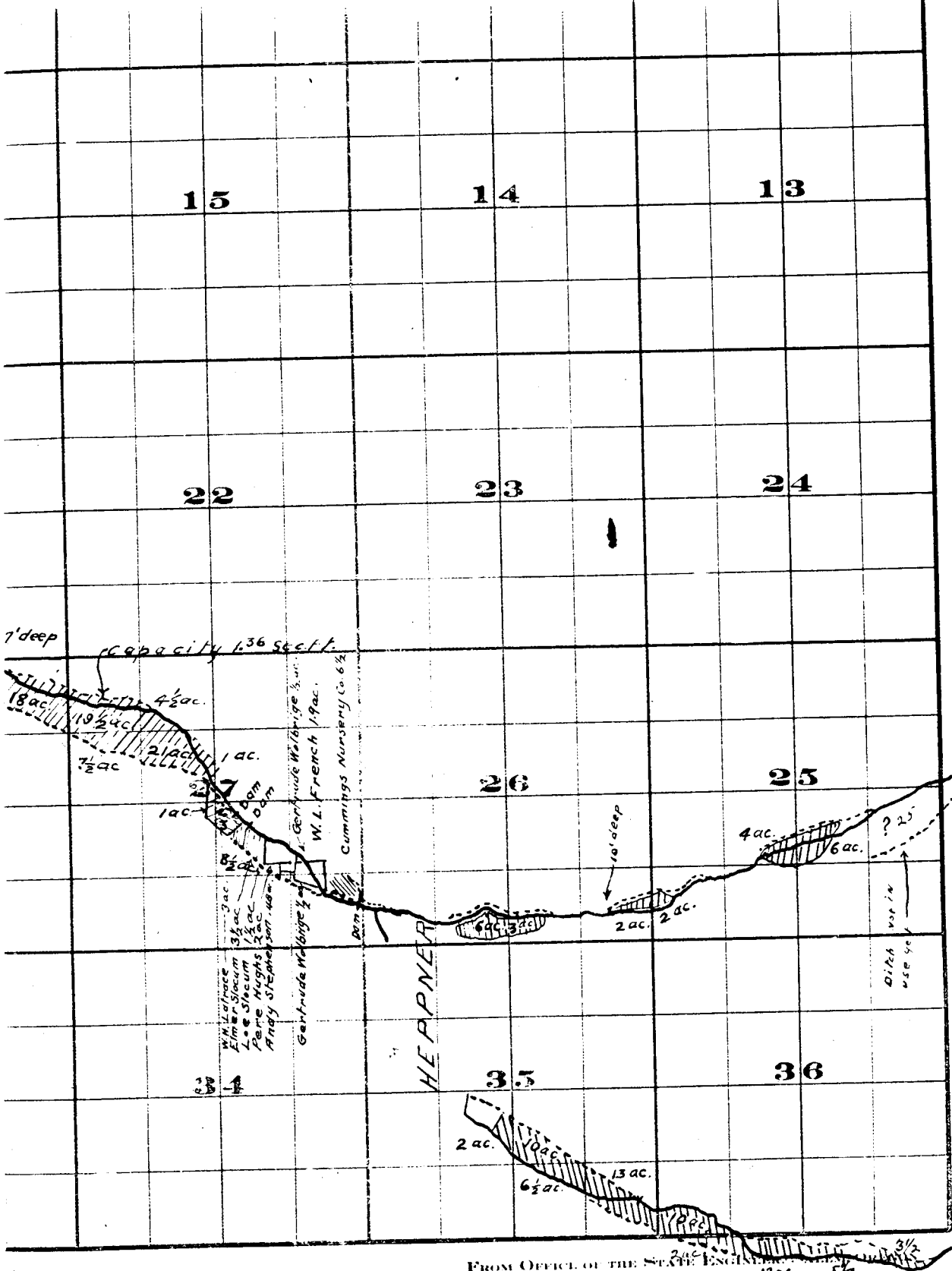




THE B & B BRISTOL CO., PRINTERS & ROAD-INDERS CHATTANOOGA, TENN.

Surveyed by A.D. Cooper July 1909
 John H. Lewis - State Engineer.
 Examined July 14, 1909.



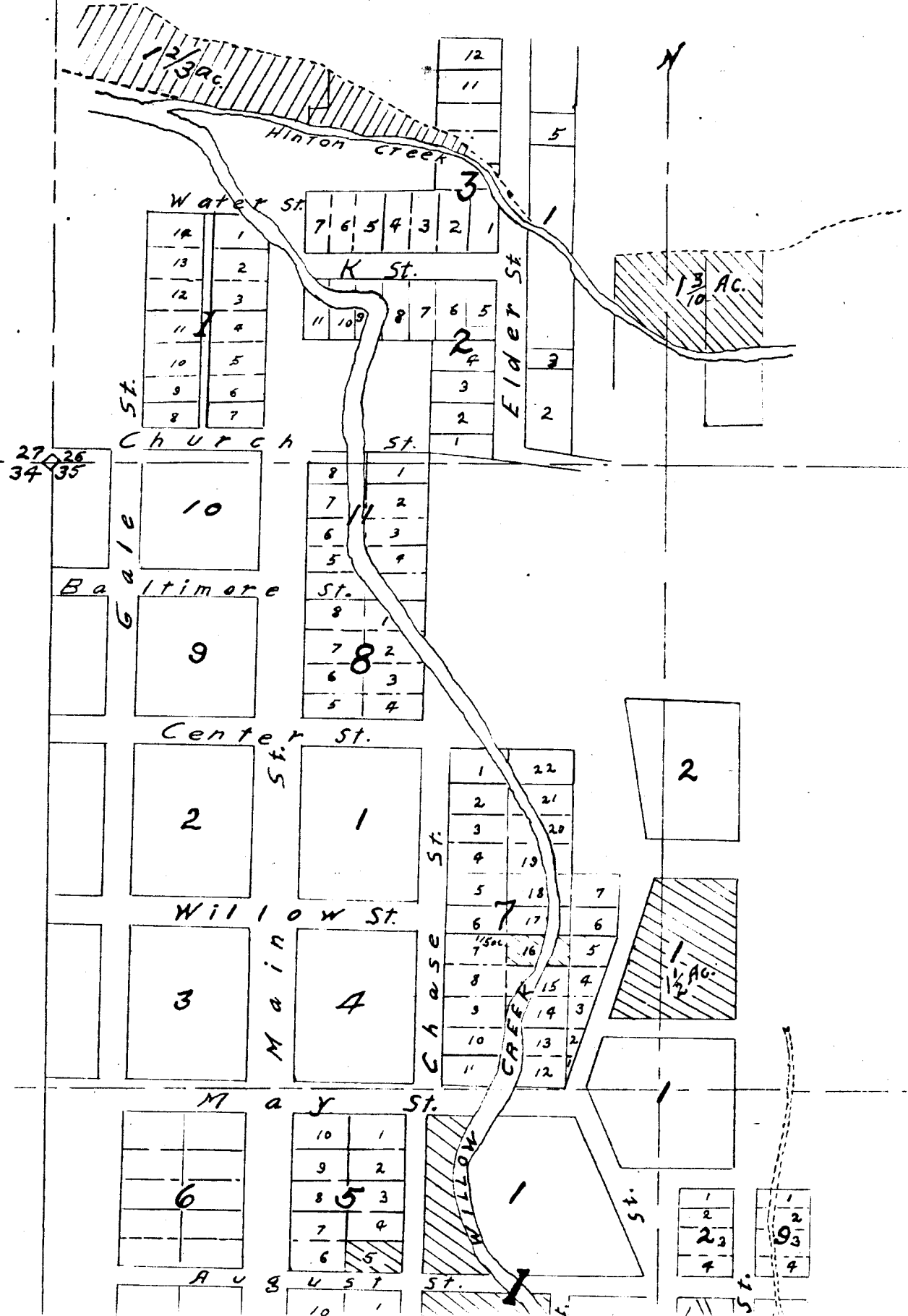


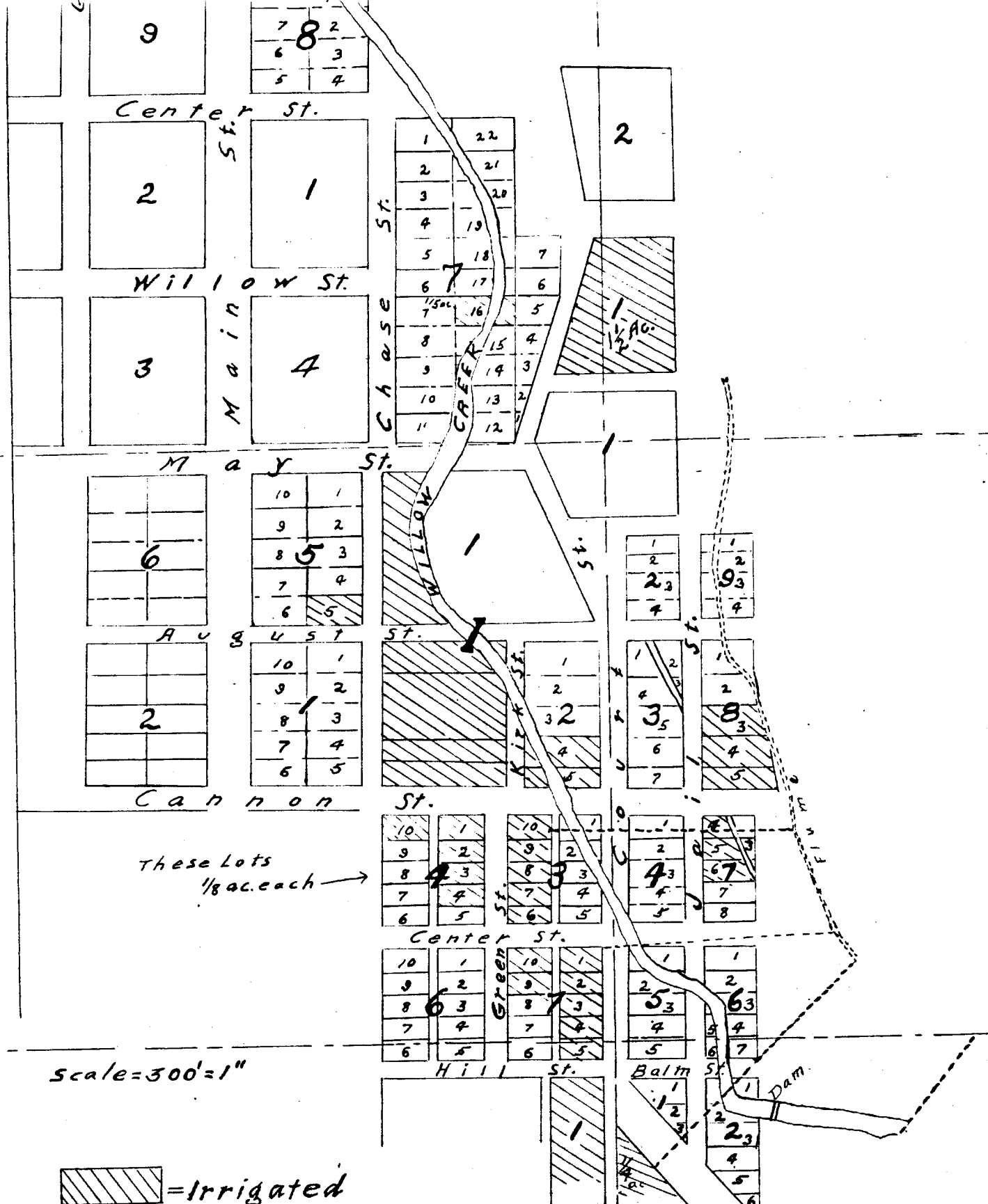
Willow Creek Adjudication

Part 3 S. 26
25.26

HEPPNER

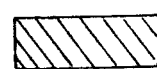
Situated in T. 2S. R. 26E. W.M.





These Lots
1/8 ac. each →

scale=300'=1"

 =Irrigated

John H. Lewis - State Engineer.

Examined - July 14, 1909.

Heppner

2S. 26E