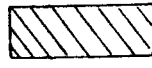


These Lots  
1/8 ac. each →

scale = 300' = 1"

 = Irrigated

John H. Lewis - State Engineer.

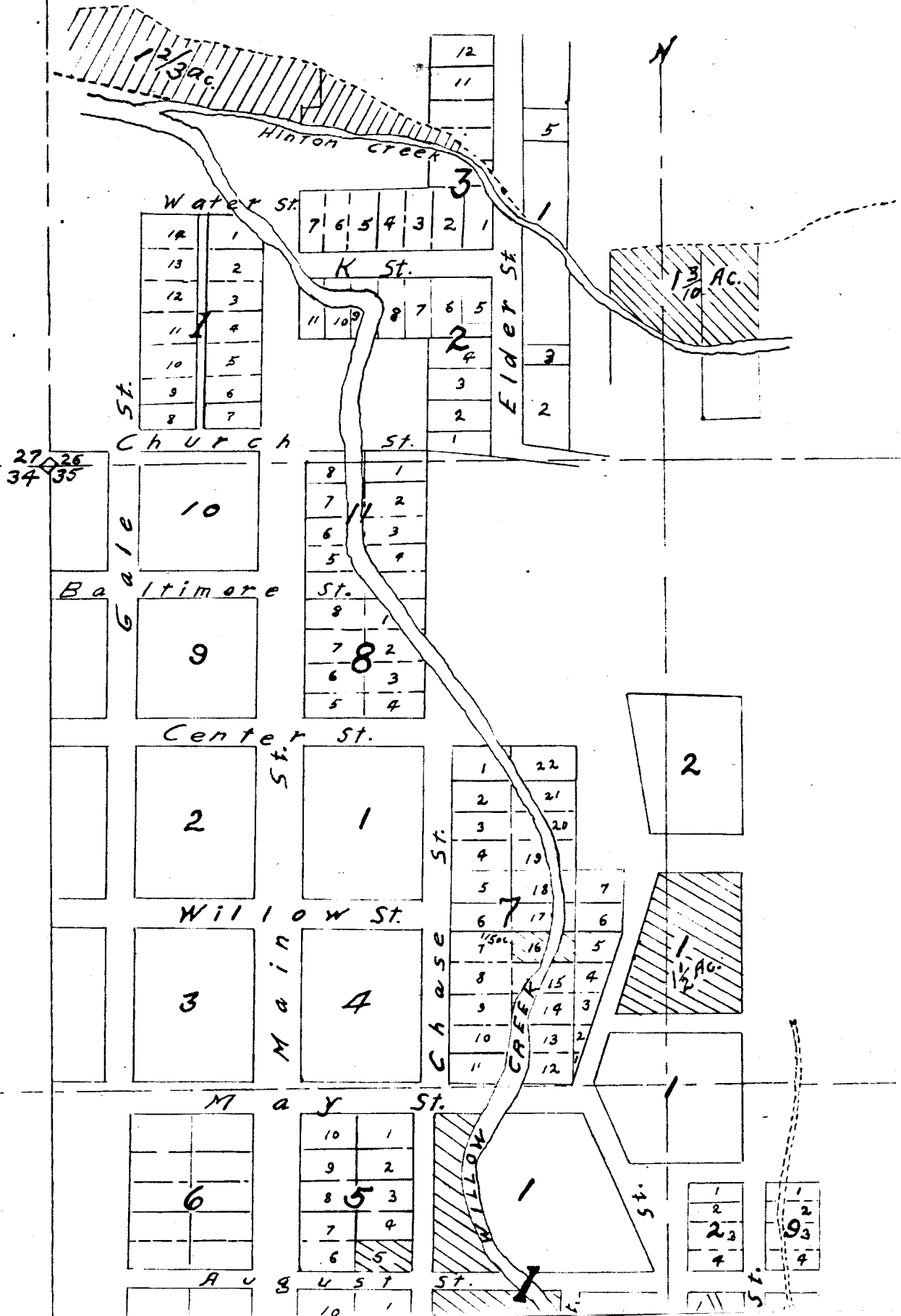
Examined - July 14, 1909.

Heppner

2S. 26E

# HEPPNER

Situated in T. 25. R. 26E. W.M.



27 26  
34 35

2

10

9

2

1

3

4

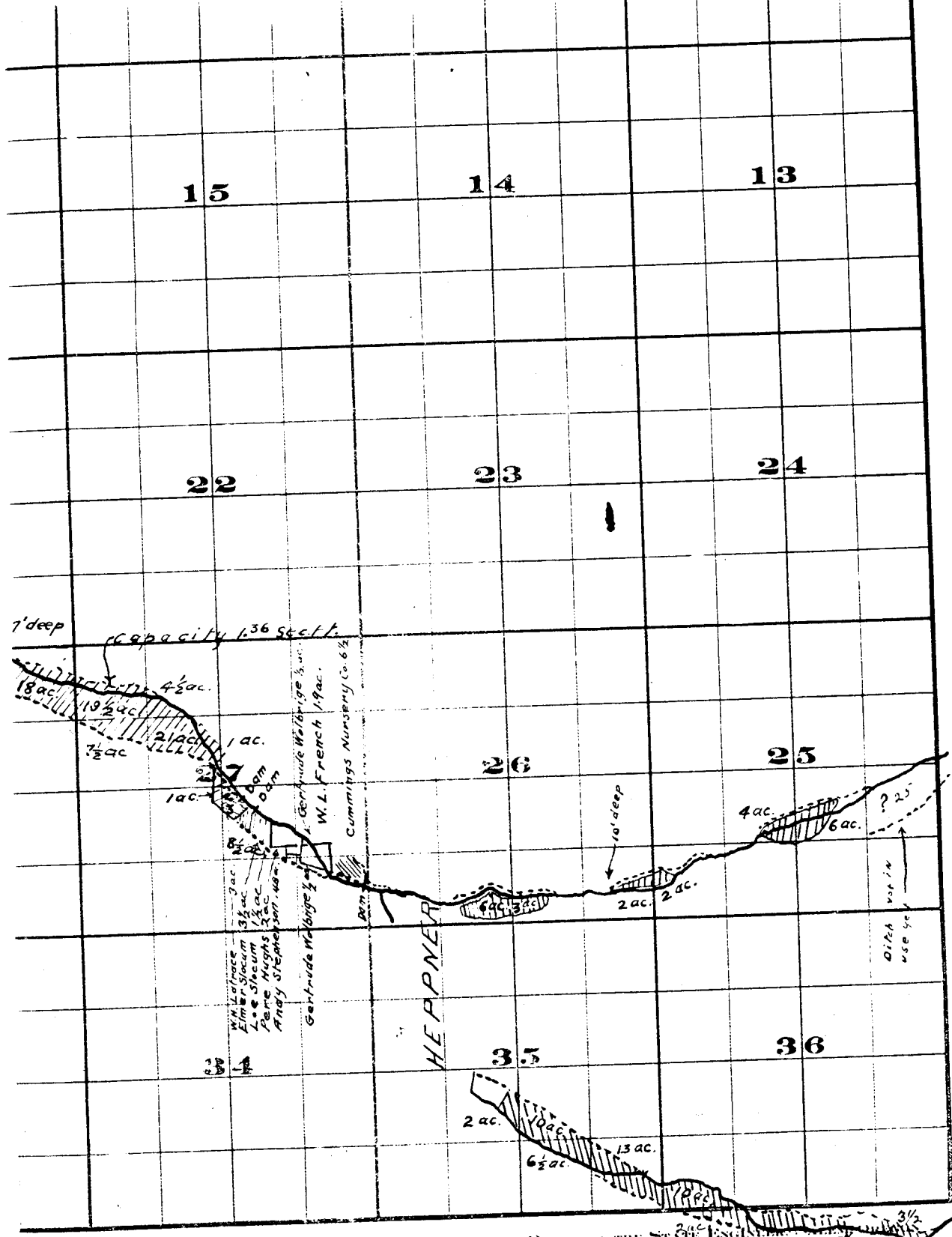
6

5

1

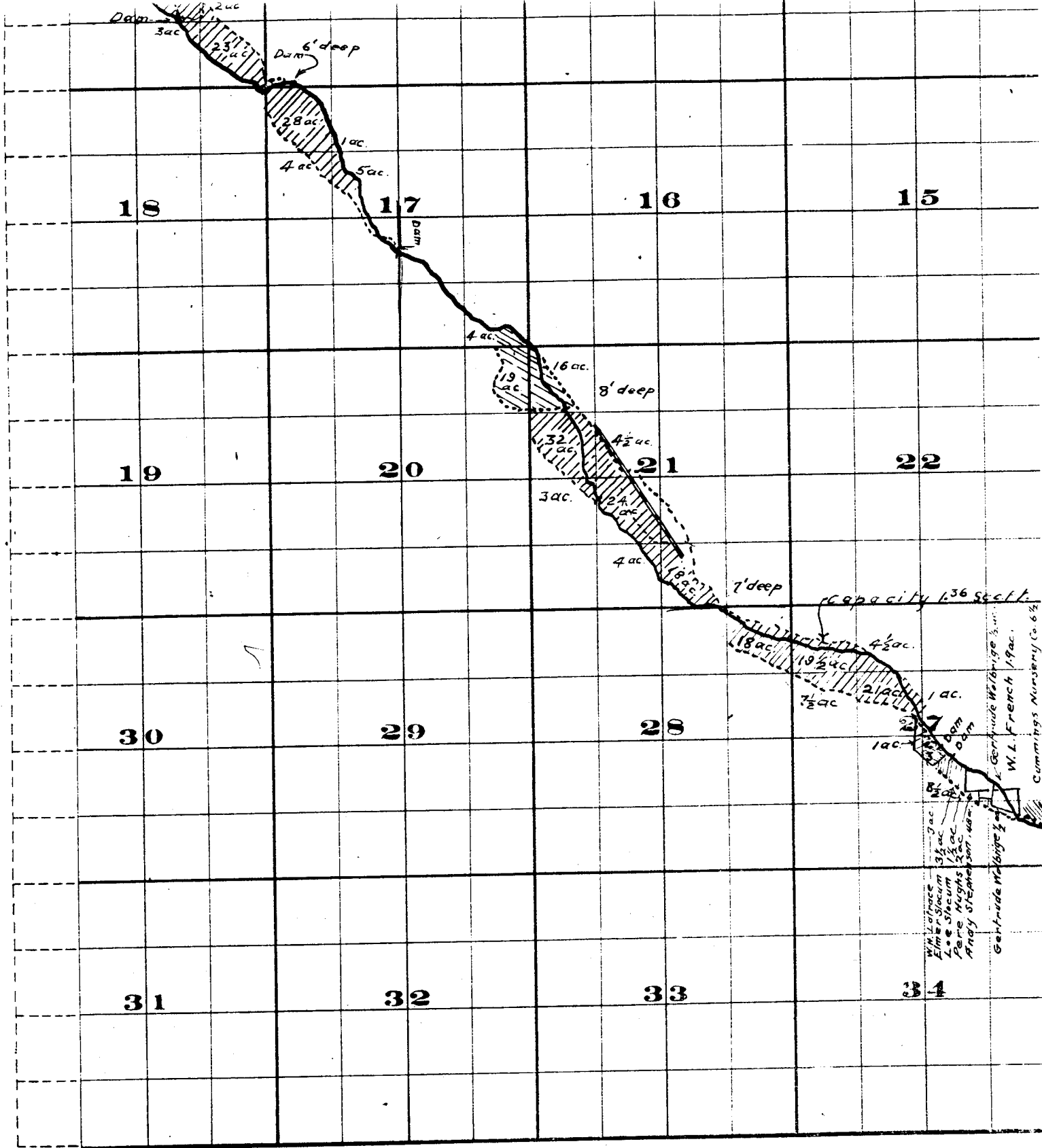
1	1
2	2
2	3
4	4

St.



Willow Creek Adjudication

Part 3 S. 26  
2 S. 26

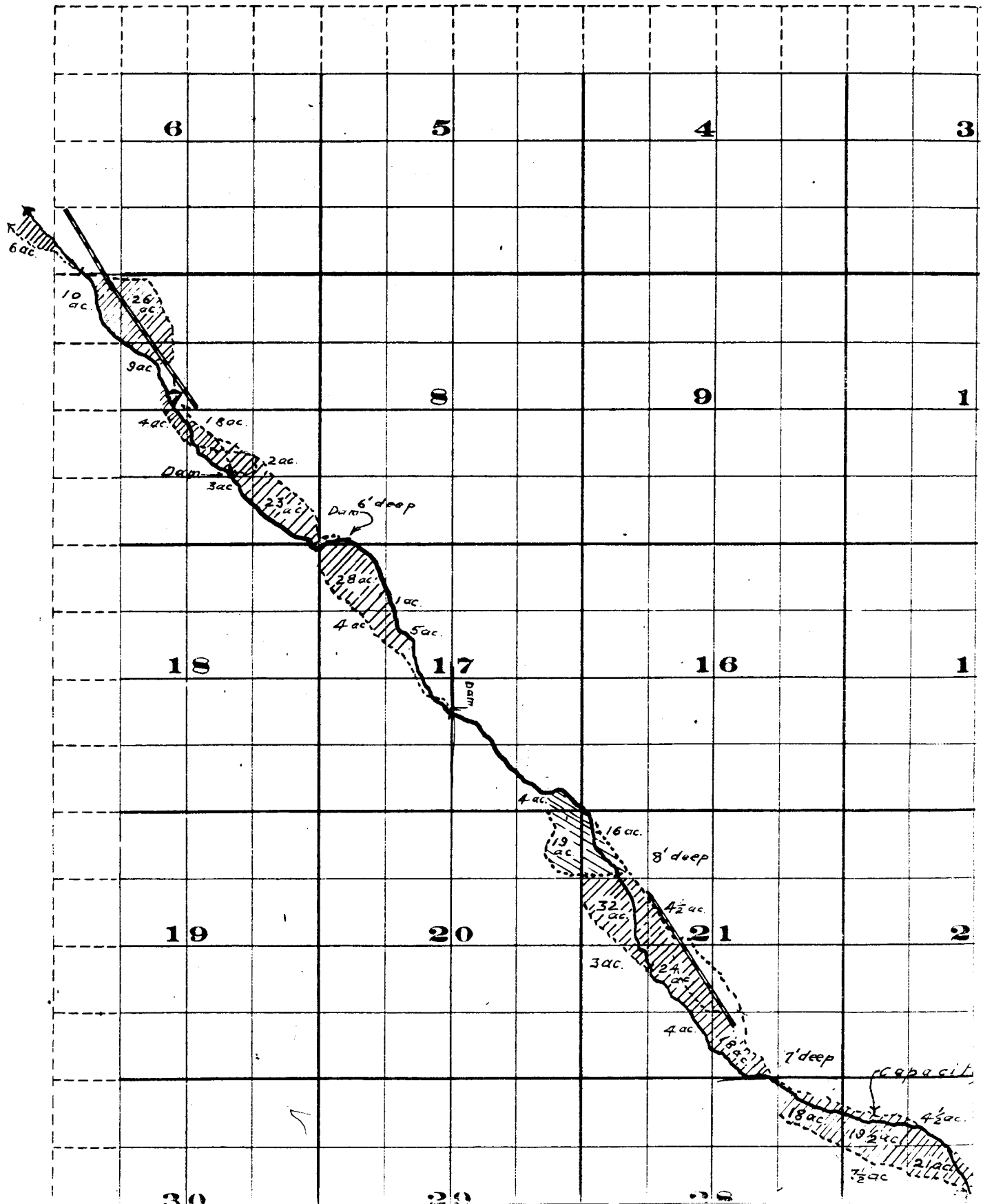


THE S & B RISTOL CO., PRINTERS & BOUNDERS, CHITPAKE, W.V.

Surveyed by R.D. Cooper July 1909  
 John H. Lewis - State Engineer.  
 Examined July 14, 1909.



# Township 2 S.



# Range 26 E. W. M.

