

WELL APPLICATION

UNITED STATES PLYWOOD CORPORATION

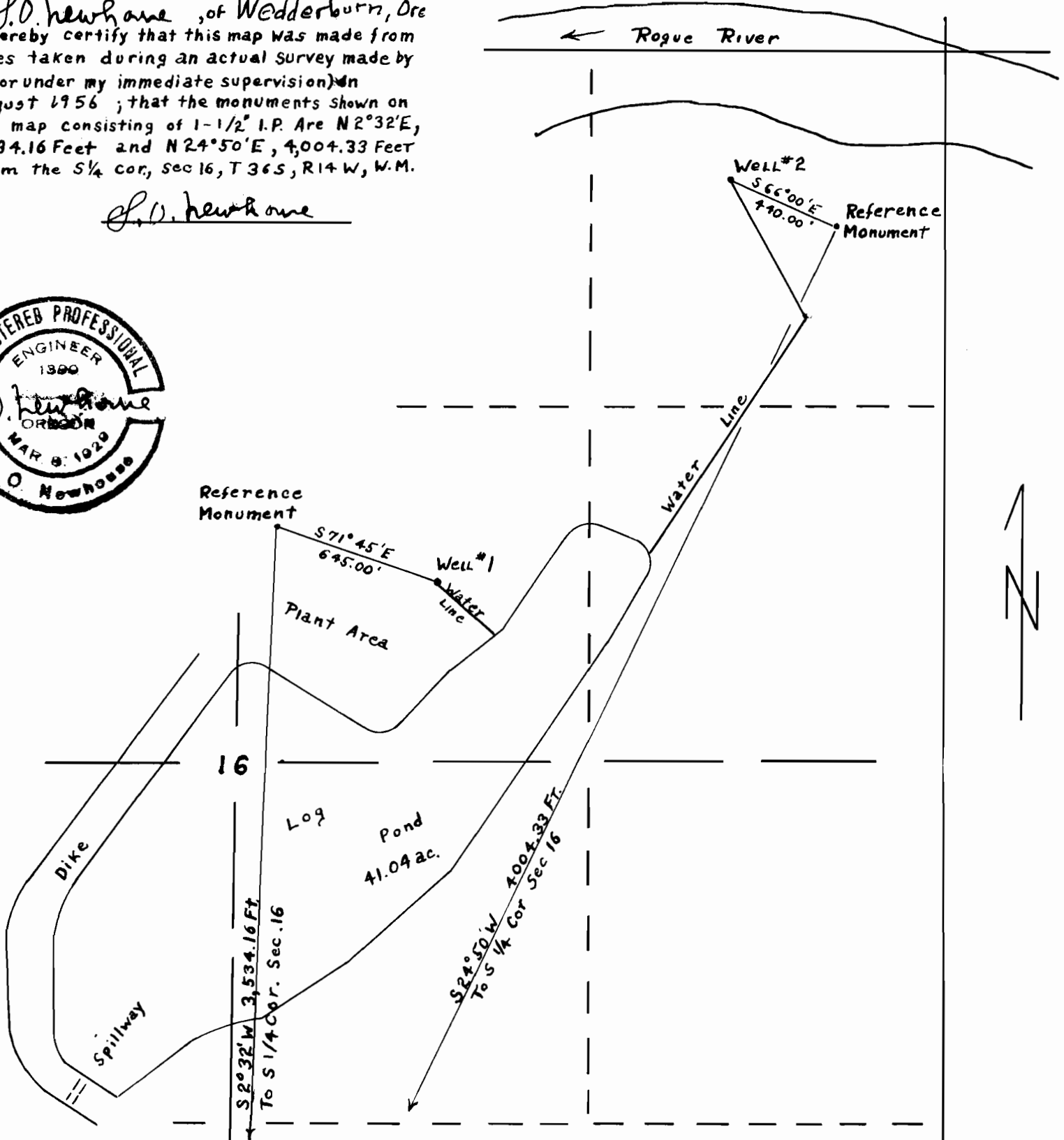
SEC. 16, T. 36 S., R. 14 W., W.M., CURRY COUNTY, ORE.

SCALE 1" = 500'

August, 1956

I, S. O. Newhouse, of Wedderburn, Ore do hereby certify that this map was made from notes taken during an actual survey made by me (or under my immediate supervision) on August 1956; that the monuments shown on this map consisting of 1-1/2" I.P. Are N2°32'E, 3,534.16 Feet and N24°50'E, 4,004.33 Feet From the S 1/4 cor., Sec 16, T 36 S, R 14 W, W.M.

S. O. Newhouse



Application No. G-460
Permit No. G-422