

I, G.M. UPINGTON OF WEYERHAEUSER TIMBER COMPANY DO HEREBY CERTIFY THAT THIS MAP WAS MADE FROM NOTES TAKEN DURING AN ACTUAL SURVEY MADE UNDER MY IMMEDIATE SUPERVISION ON MAY 20, 1957; THAT THE MONUMENTS SHOWN ON THIS MAP CONSISTING OF 3/4" O.D. X 42" CUPRO-NICKEL PIPES ARE, WELL No. 1, S 1° 23' W 446' FROM THE NORTHEAST CORNER SECTION 7, TOWNSHIP 29 SOUTH, RANGE 8 EAST, WILLAMETTE MERIDIAN, WELL No. 2, S 87° 20' E 2872' FROM THE WEST 1/4 CORNER SECTION 5, TOWNSHIP 29 SOUTH, RANGE 9 EAST, WILLAMETTE MERIDIAN, WELL No. 3, N 50° 30' W 2471' FROM THE SOUTHEAST CORNER OF SECTION 27, TOWNSHIP 28 SOUTH, RANGE 10 EAST, WILLAMETTE MERIDIAN.



G.M. Upington

Application No. G-69
Permit No. G-612

BEAR FLAT TRUCK ROAD
WELL LOCATIONS

WEYERHAEUSER TIMBER COMPANY
KLAMATH FALLS BRANCH

SCALE - AS SHOWN

DATE - JUNE 5, 1957

DEL. - *CHE*

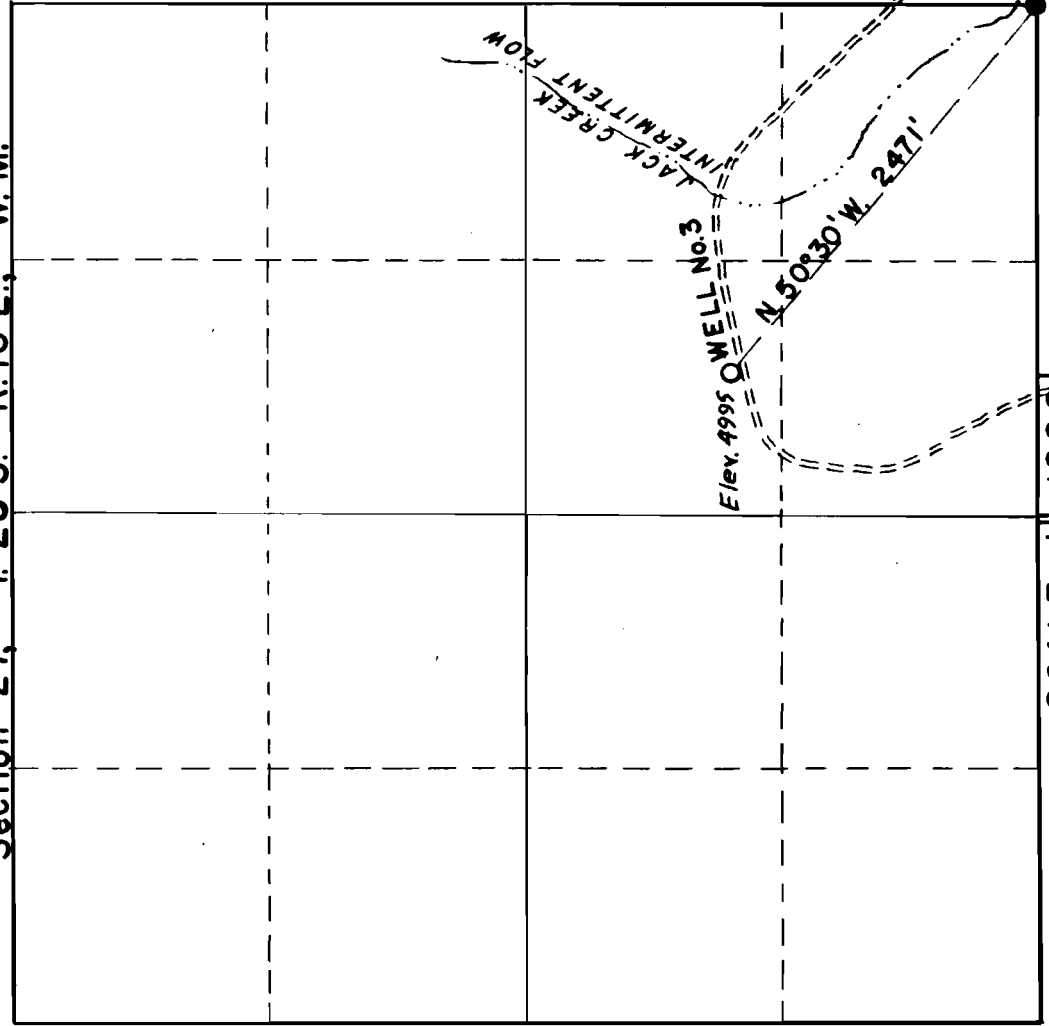
CHECKED BY -

TRACED - *CHE*

DRAWING NO - K 166

6-6

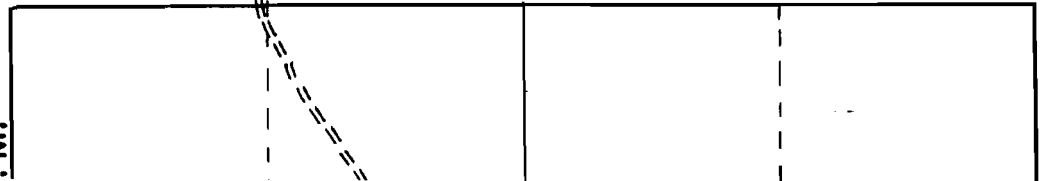
Section 27, T. 28 S. R. 10 E., W. M.



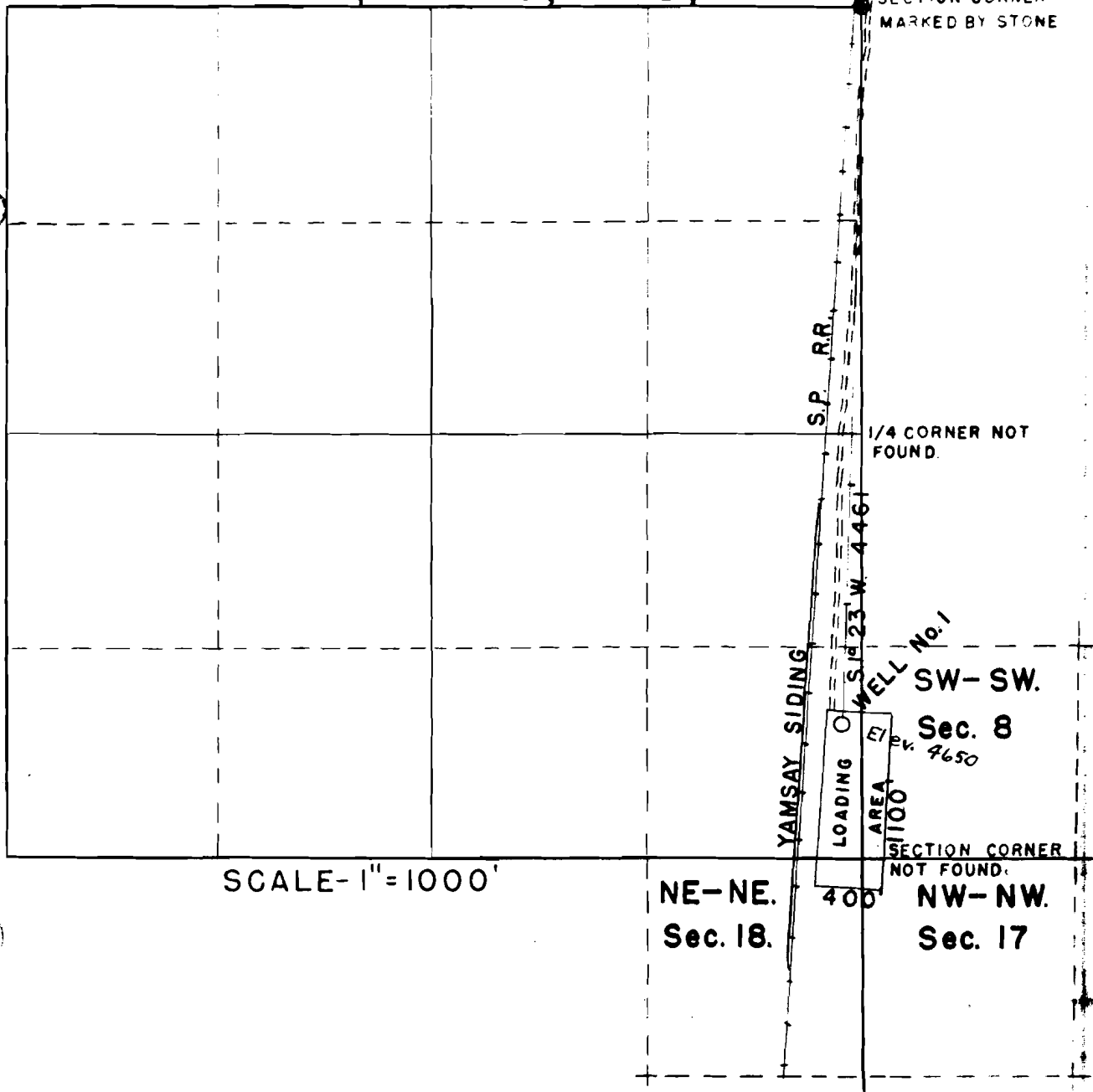
SECTION CORNER
MARKED BY POST
AND STONE MOUND

SCALE - 1" = 1000'

W. M.



Section 7, T. 29 S., R. 8 E., W.M.



SCALE- 1" = 1000'

NE-NE.
Sec. 18.

400'

SECTION CORNER
NOT FOUND.

NW-NW.
Sec. 17

SW-SW.
Sec. 8
Elev. 4650

1/4 CORNER NOT
FOUND.

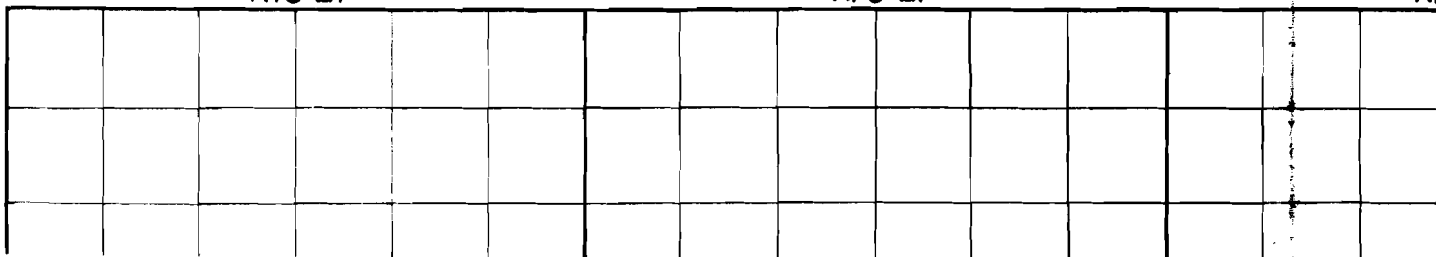
SECTION CORNER
MARKED BY STONE

1/4 C
MARR
POST
ONE

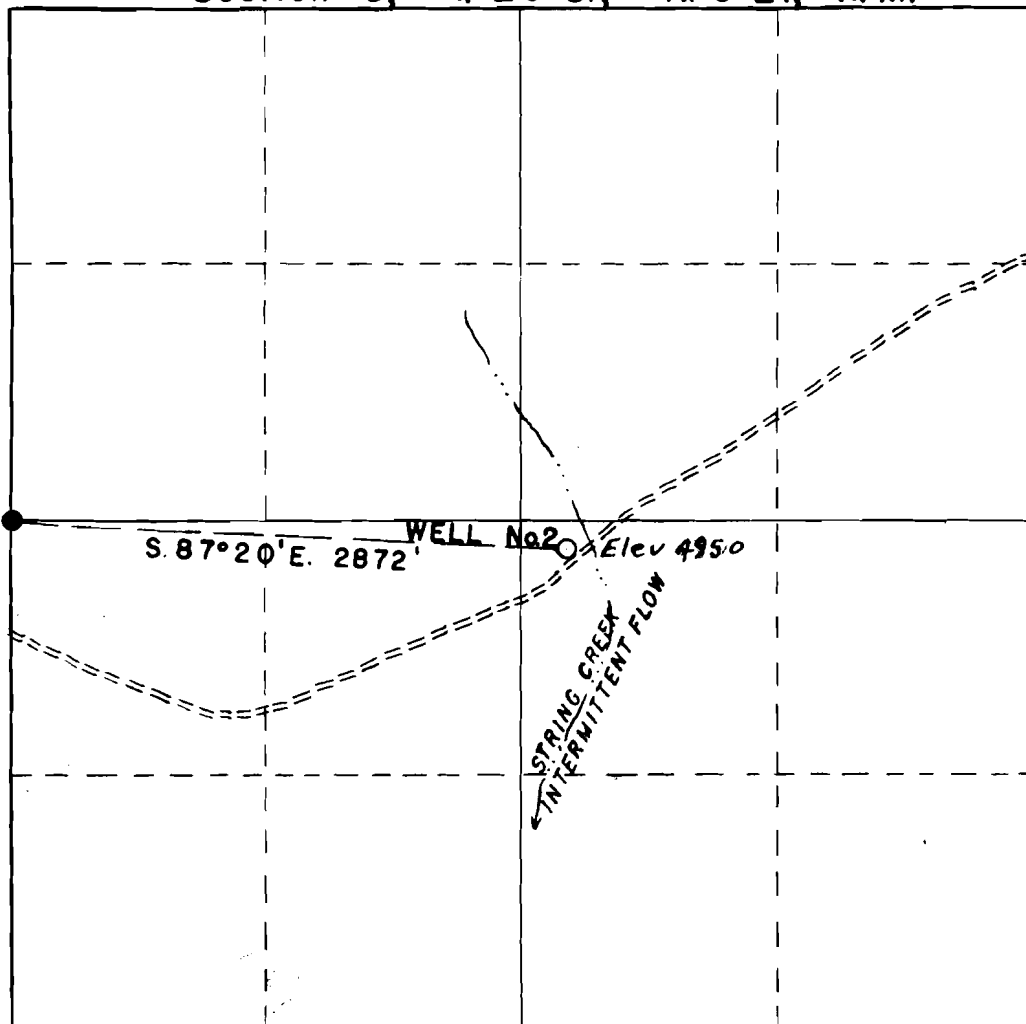
R. 8 E.

R. 9 E.

R.



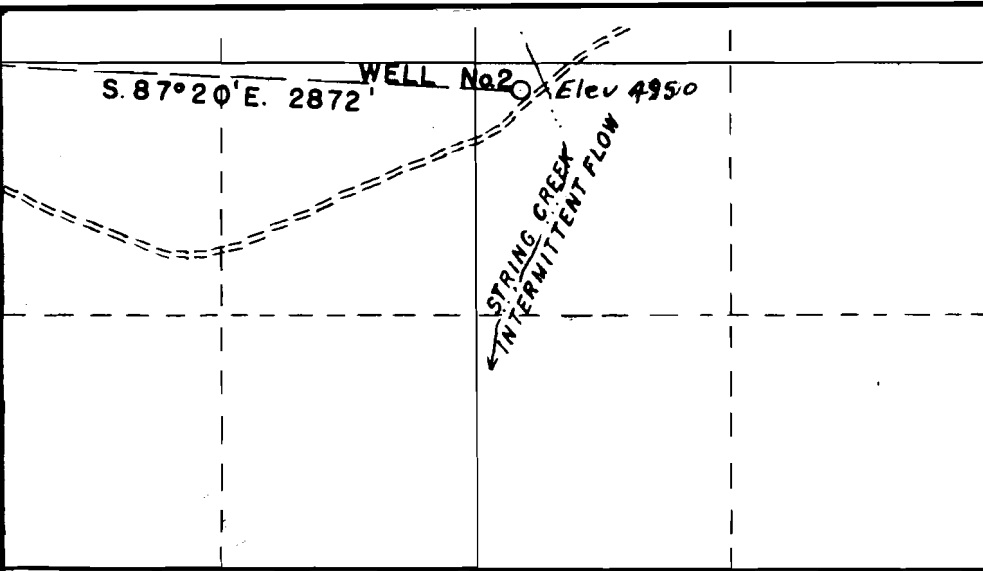
Section 5, T. 29 S., R. 9 E., W.M.



SCALE - 1" = 1000'

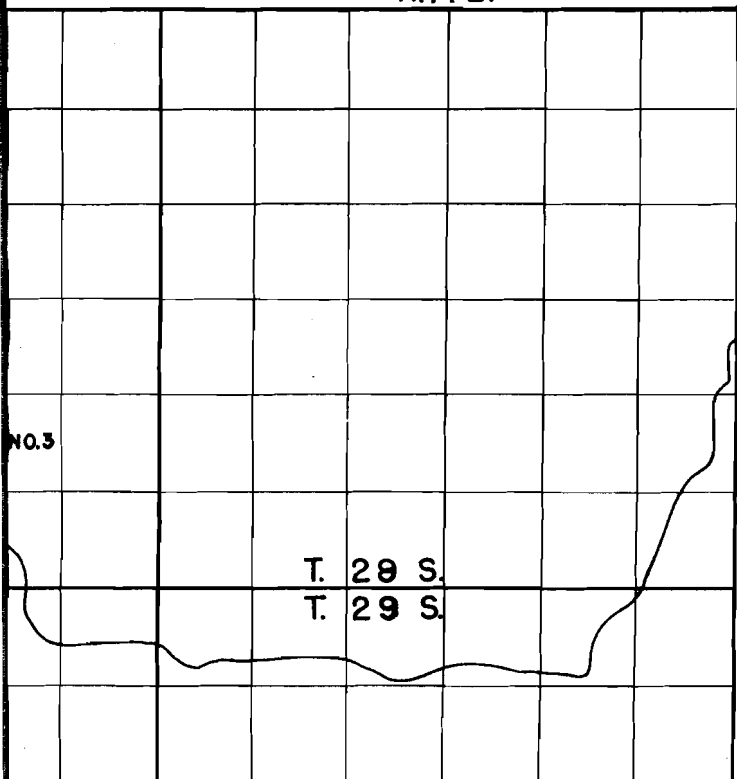
I, G.M. UPINGTON OF WEYERHAEUSER
 WAS MADE FROM NOTES TAKEN UNDER
 SUPERVISION ON MAY 20, 1957;
 3/4" O.D. X 42" CUPRO-NICKEL P
 CORNER SECTION 7, TOWNSHIP
 No. 2, S 87° 20' E 2872' FROM THE
 9 EAST, WILLAMETTE MERIDIAN
 CORNER OF SECTION 27, TOWN

O.E.				R. 11 E.			

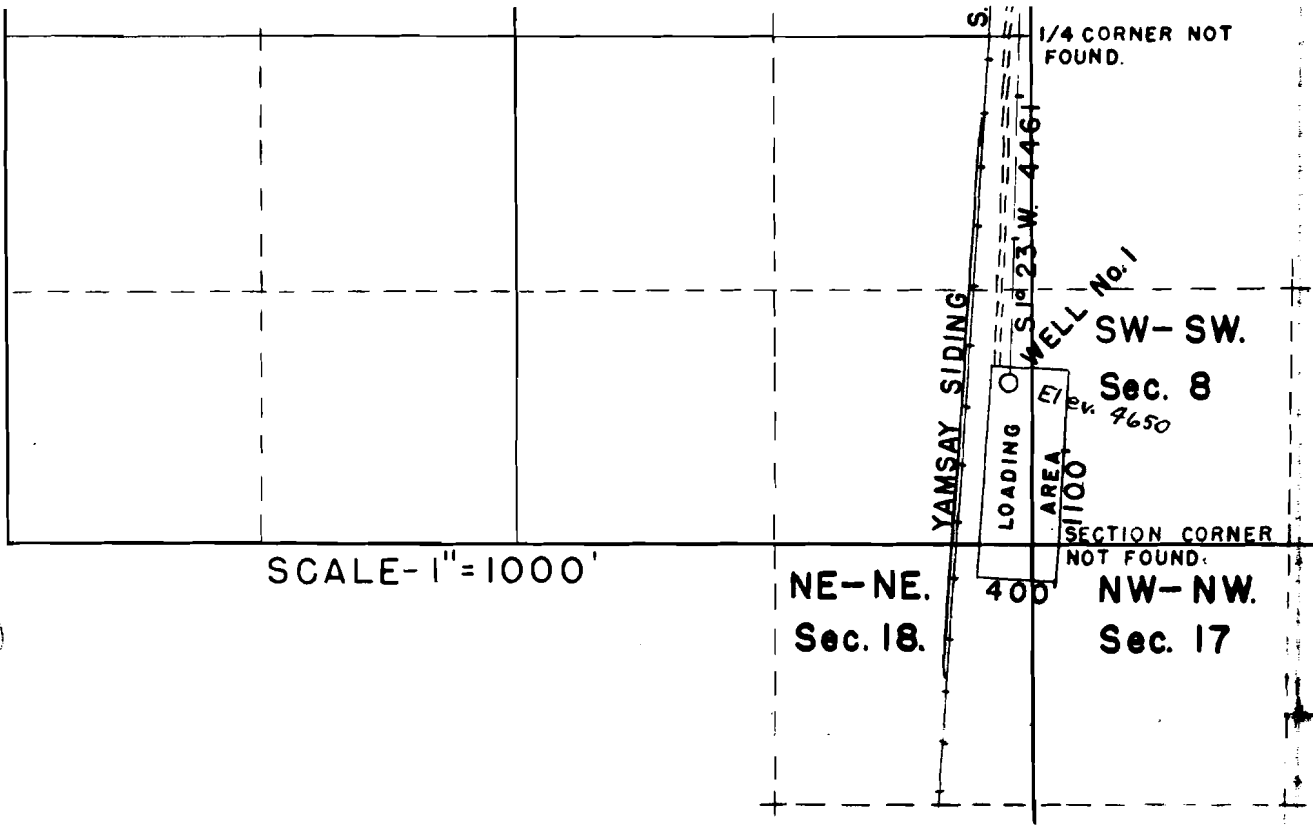


SCALE - 1" = 1000'

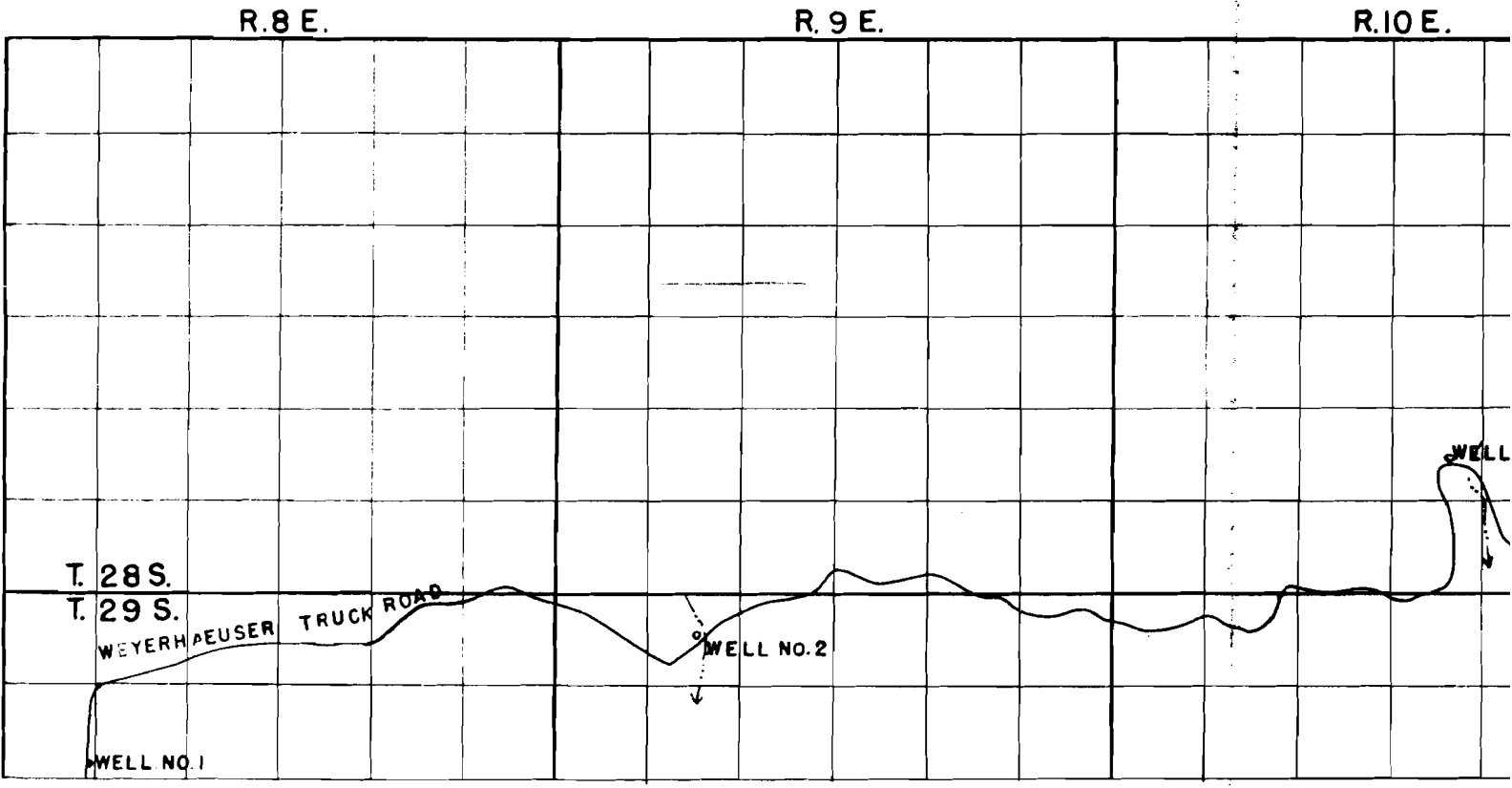
R. 11 E.



I, G.M. UPINGTON OF WEYERHAEUSER TIMBER
 WAS MADE FROM NOTES TAKEN UNDER
 SUPERVISION ON MAY 20, 1957; THAT THE
 3/4" O.D. X 42" CUPRO-NICKEL PIPES ARE
 CORNER SECTION 7, TOWNSHIP 29 SOUTH
 No. 2, S 87° 20' E 2872' FROM THE WEST
 9 EAST, WILLAMETTE MERIDIAN, WEST
 CORNER OF SECTION 27, TOWNSHIP 28



1/4 CORNER MARKED BY POST, WITH ONE B.T.



VICINITY MAP

SCALE 1" = 2 MILE