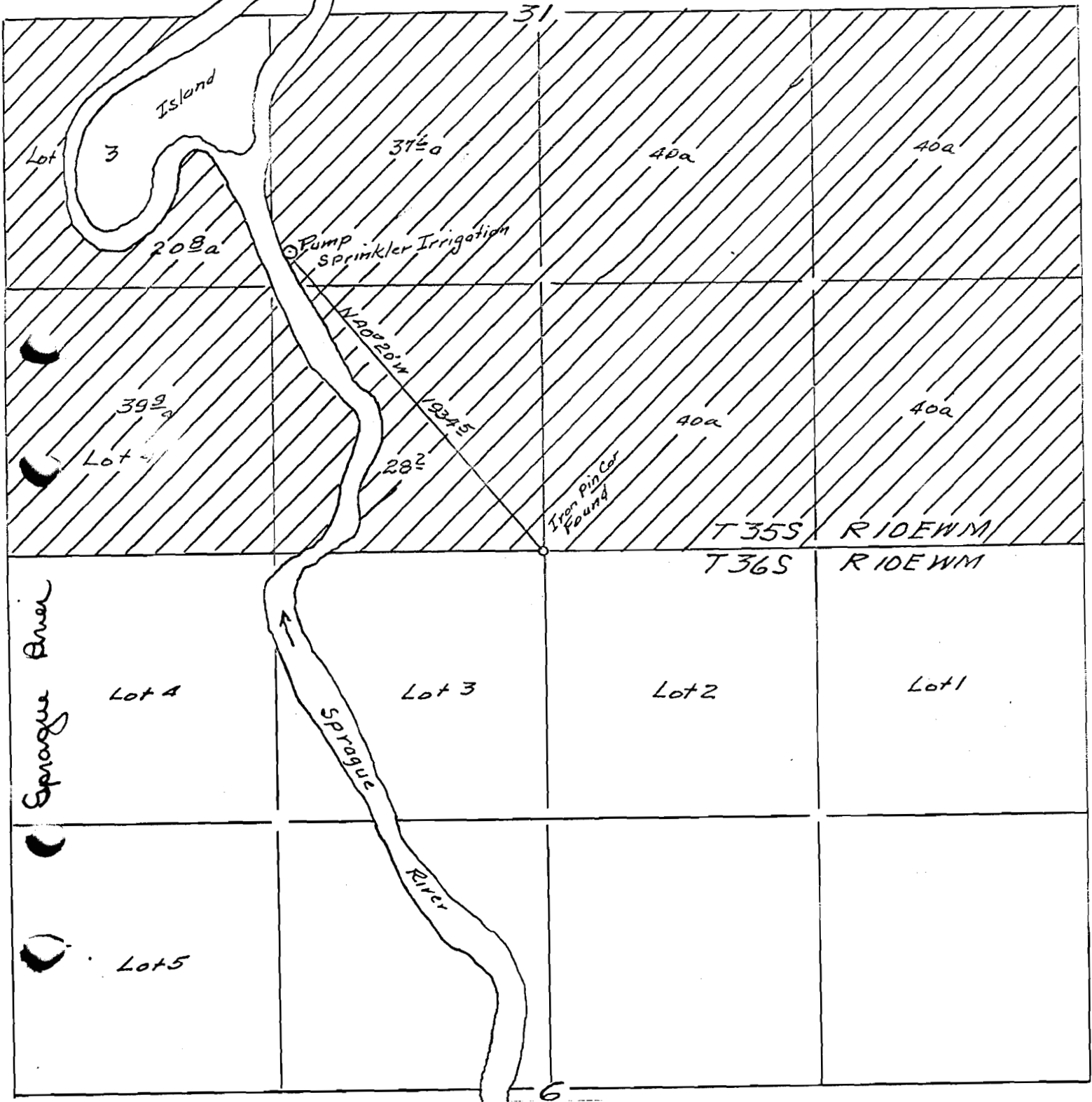


20509
24529



I, W.R. Canton, of Klamath Falls Oregon do hereby certify that this map was made from notes taken during an actual survey made by me on Sept 29 1951; that the iron pin monument marking the 1/4 corner common to Sections 31 T 35S R 10E W M and 6, T 36S, R 10E W M was found in place.

Application No 25462
Permit No 20509

