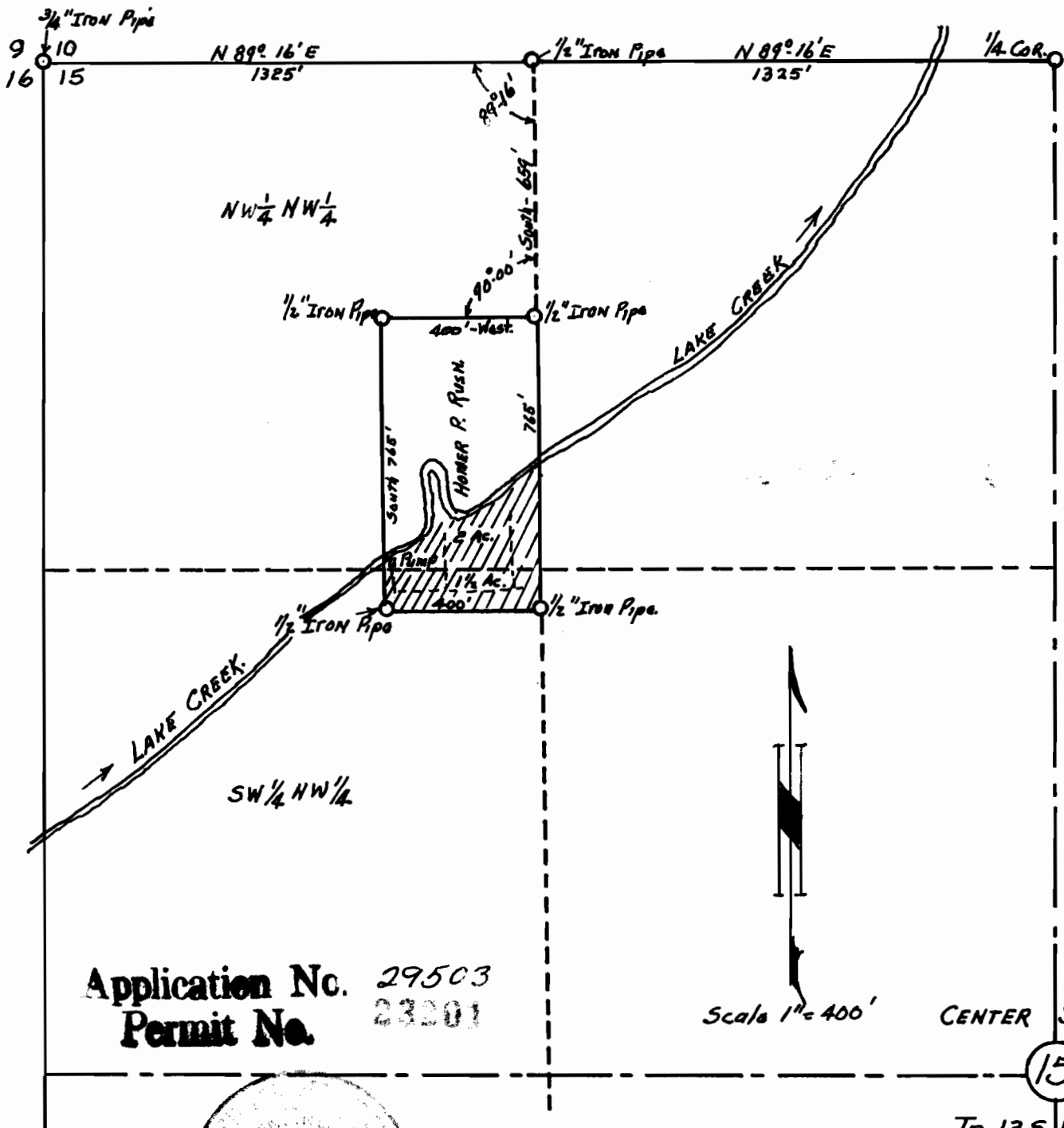


MAP TO ACCOMPANY WATER RIGHT APPLICATION HOMER P. RUSH

W $\frac{1}{2}$ NW $\frac{1}{4}$ SECTION 15 -Tp.13 S. R. 9 E+ W. M.



Application No. 29503
Permit No. 23201

Scale 1" = 400'

CENTER SECTION

15

Tp. 13 S R 9 E.



RECEIVED
STATE ENGINEER
IOWA

11/13/13