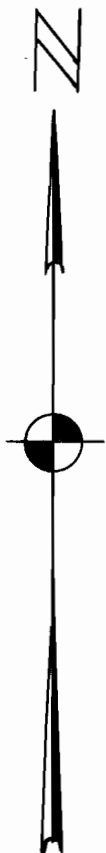


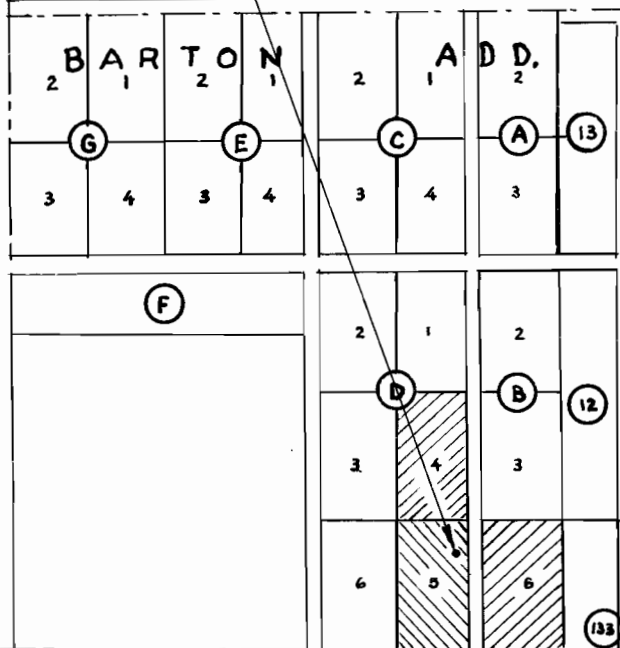
Found J. P. 1/16 Cor.
S 89° 51' E (G.L.O.)

Found Brass Top Mon. 33 34
T. 17 S., R. 47 E. W.M. 3
T. 18 S., R. 47 E. W.M. 4 3

NW Corner
NE 1/4 NE 1/4
Section 4



69° 19'
2633.5
S 20° 32' E



Note:
The cross hatched area
will be irrigated by portable
sprinkler units. (3.0 A. Total)

ONTARIO OREGON

ENGINEERS CERTIFICATE

I, Carl G. Swanson, of Payette, Idaho do hereby certify that this map was made from notes taken during an actual survey made by me on March 30, 1957; that the monument shown on this map is a 3/4" Iron pipe driven where the well will be located and is S 20° 32' E. 2633.5 feet from the NW Corner of the NE 1/4 NE 1/4 of Section four (4) of T. 18 S., R. 47 E. W.M.



PUMP LOCATION SURVEY
for
H. W. Maddux
Ontario, Oregon
March 30, 1957
Scale: 1" = 400'

Application No. G-619
Permit No. G-535