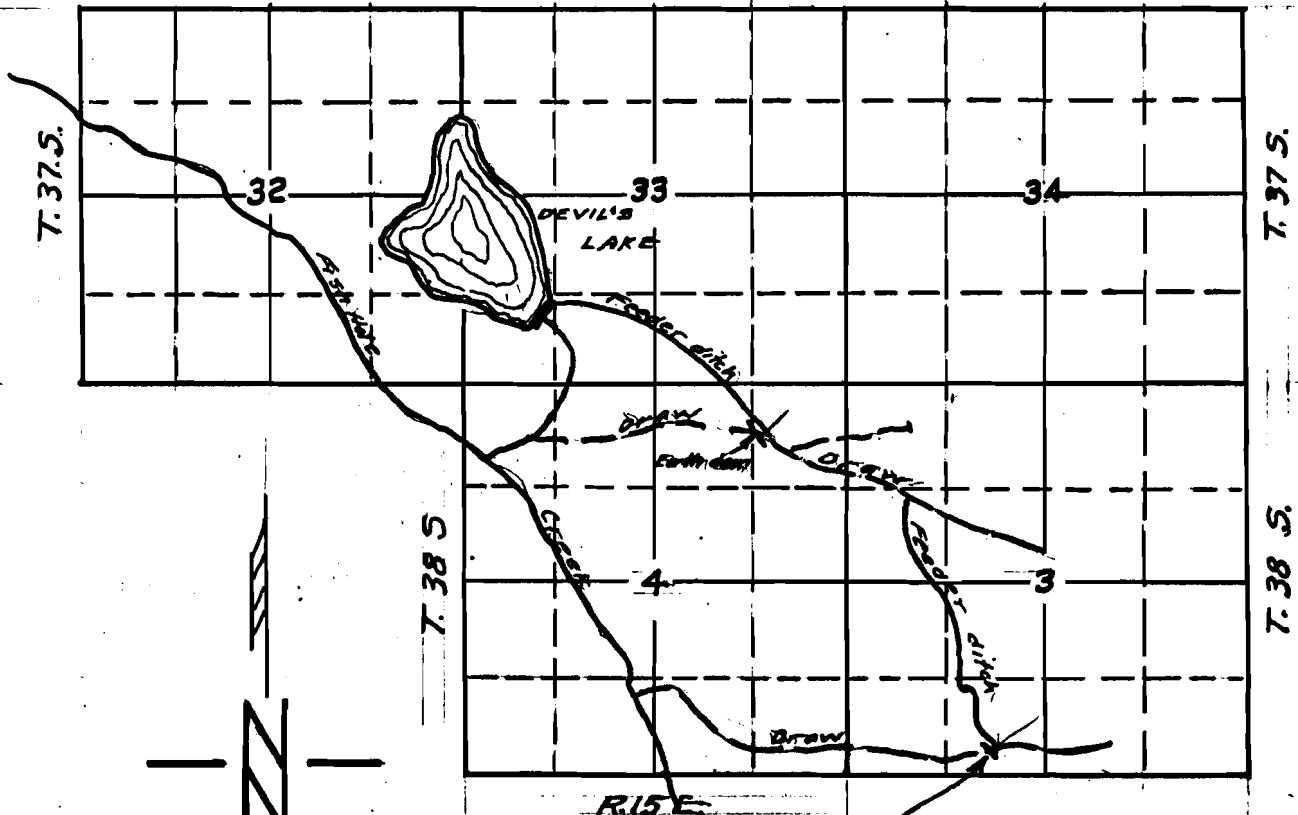


R. 15 E



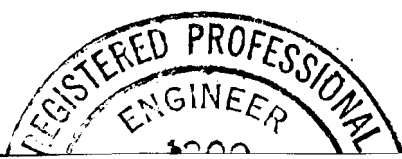
() Lick Hole Cule: misc.

Earth of Rock dam - 5 chains north of 9 chains west of 1/4 corner to Sec. 3 of 10

Application No.
Permit No.

22070
28765
28766
22884
22899
22900 ✓

RECEIVED
NOV. 17 1953
STATE ENGINEER
SALEM, OREGON



R-27427