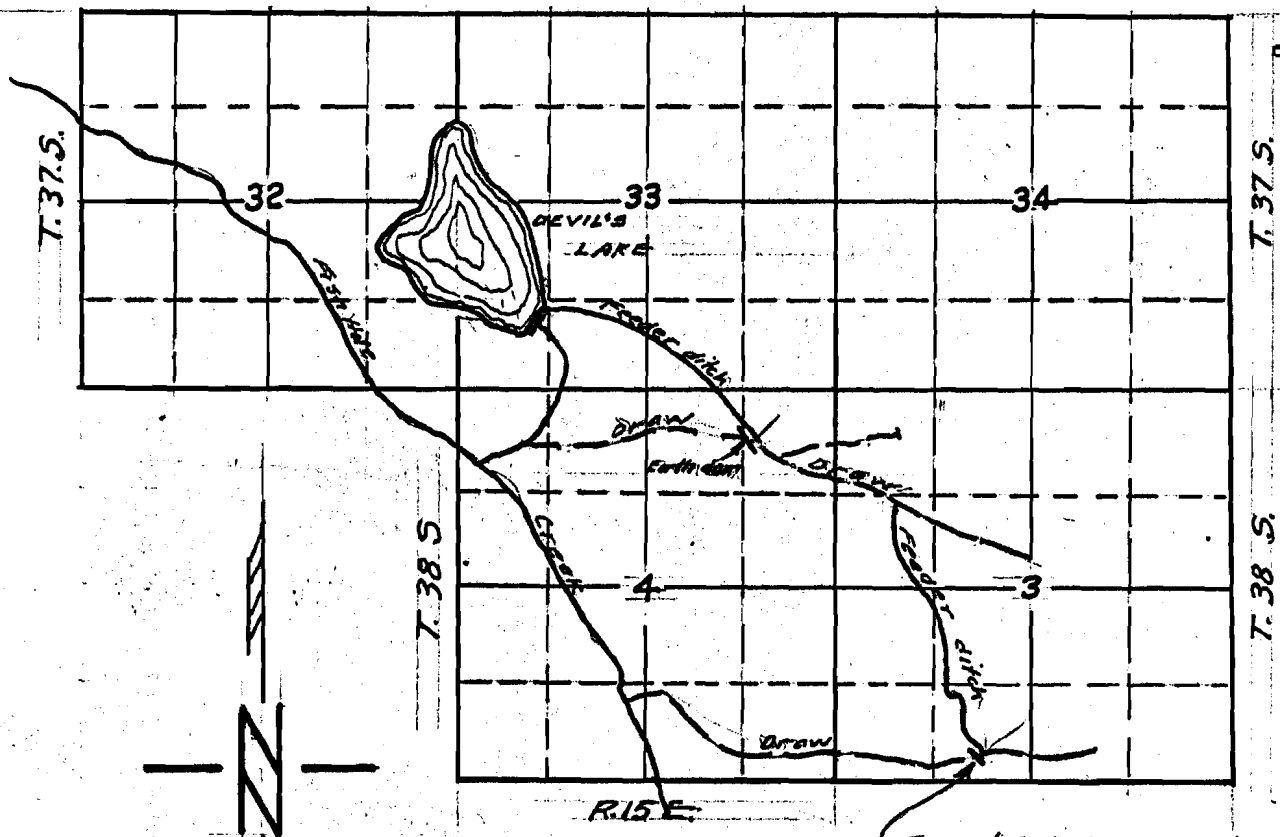


R. 15 E

R-1618  
241034

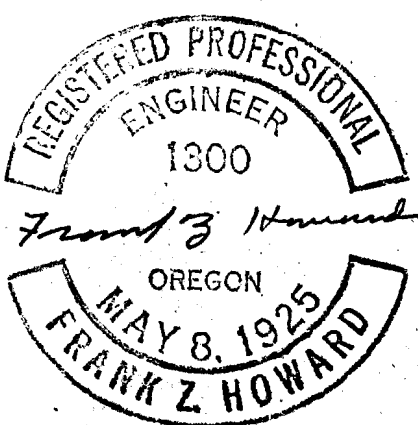


Shish Hole Cut: Misc.

Application No.  
Permit No.

R-27427  
 22070  
 28765  
 28766 R-1613  
 22884  
 22899  
 22900

RECEIVED  
 NOV. 17 1953  
 STATE ENGINEER  
 SALEM, OREGON



DEVIL'S LAKE RESERVOIR		
SHOWING FEEDER DITCHES & DAM		
SURVEYED FOR	HALL, WATTS & GRIFFITH	
SURVEYED BY	FRANK Z. HOWARD	8-53
DRAWN BY	F.Z.H.	