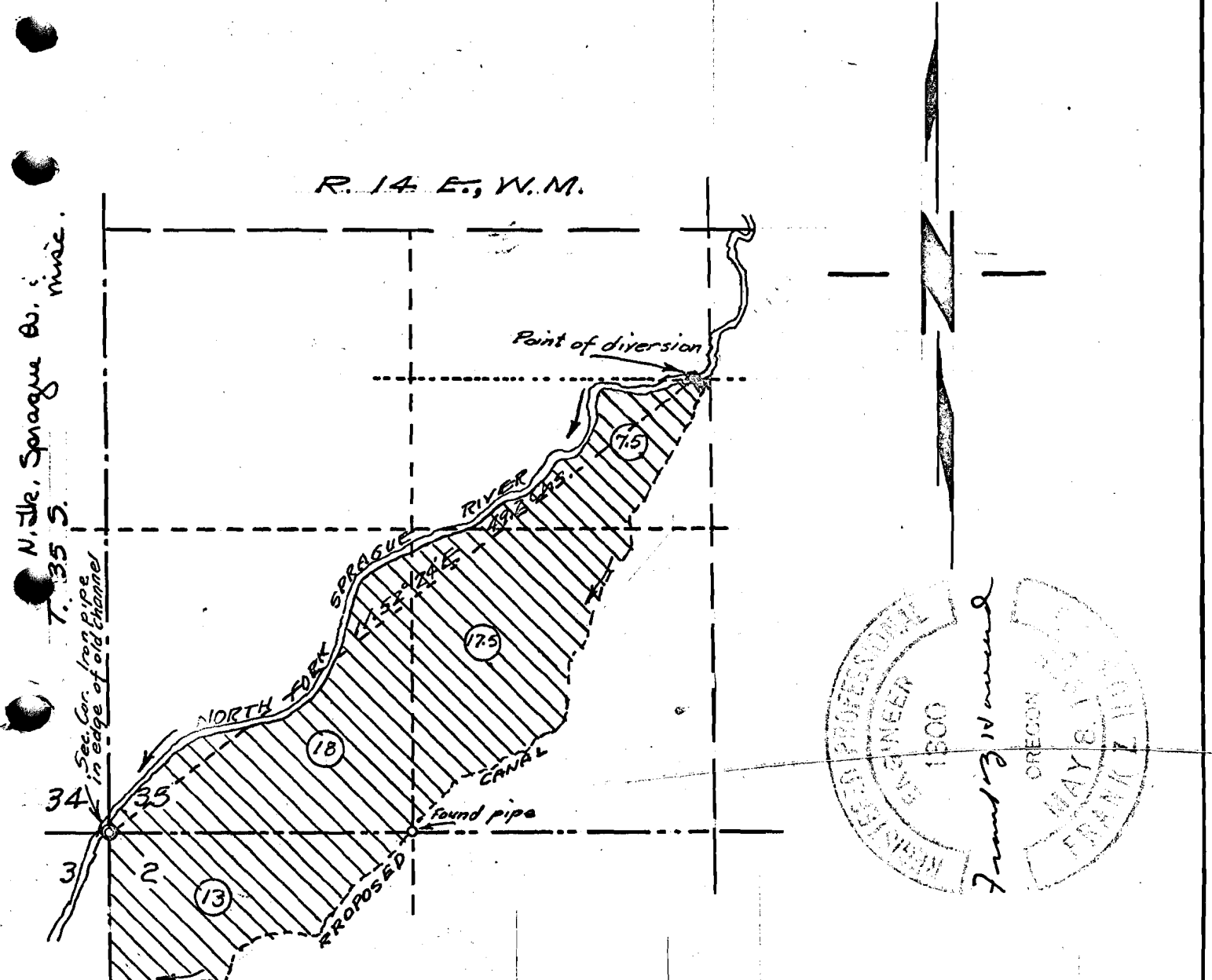


24273
24791

CERTIFICATE

I, Frank Z. Howard, civil engineer, of Klamath Falls, Oregon, do hereby certify that this map was made from notes taken during an actual survey made by me on May 23, 1956, and from information taken from an aerial map, and that the monuments at the section corner and the 1/16 corner, exist as shown.

Frank Z Howard



N. 1/4, Sprague Riv. misc.
T. 35 S.
Sec. Cor. Iron pipe in edge of old channel
T. 36 S.

APPLICATION NO. 30839 -
PERMIT NO. 24273 -

BAILEY FLAT
NORTH FORK OF SPRAGUE RIVER IN SEC. 35,
T. 35 S., AND SEC. 2, T. 36 S., R. 14 E., W. M.,
IN KLAMATH COUNTY, OREGON.

| | | |
|--------------|----------------|---------|
| SURVEYED FOR | BASIL HALL | |
| SURVEYED BY | FRANK Z HOWARD | 5/23/56 |