

CITY OF LONG CREEK, OREGON
MUNICIPAL WATER SUPPLY

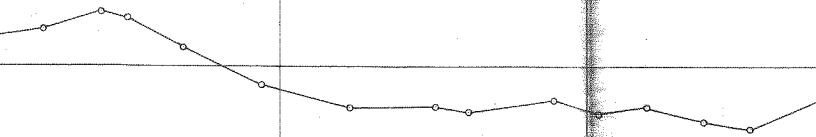
JAN 4, 1938

1" = 400'

ENGINEERS CERTIFICATE

I, L. E. LUCAS of John Day, Oregon, do hereby certify that this map was made from notes taken during an actual survey made by me on Dec. 30-31, 1937 and that it correctly represents the location of the works throughout and has written thereon the sizes and distances of the supply and service pipes.


Engineer No. Oregon 384



I, L. E. Lucas of the City of London, do hereby certify that this map was prepared during an actual survey of the works and that it is true and correct in accordance with the sizes of the service pipes.

ENGINEER

1" = 400'

MUNICIPAL

CITY OF LONDON

MUNICIPAL WATER SUPPLY

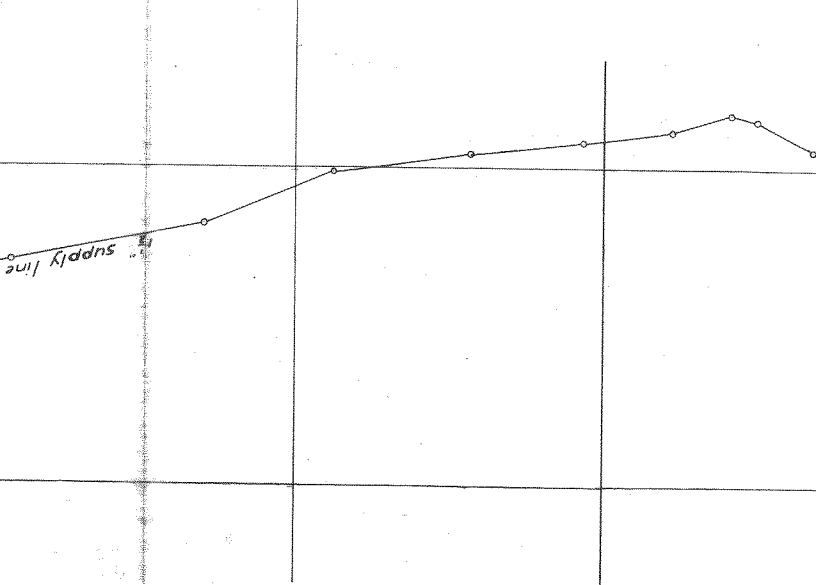
JAN 4, 1938

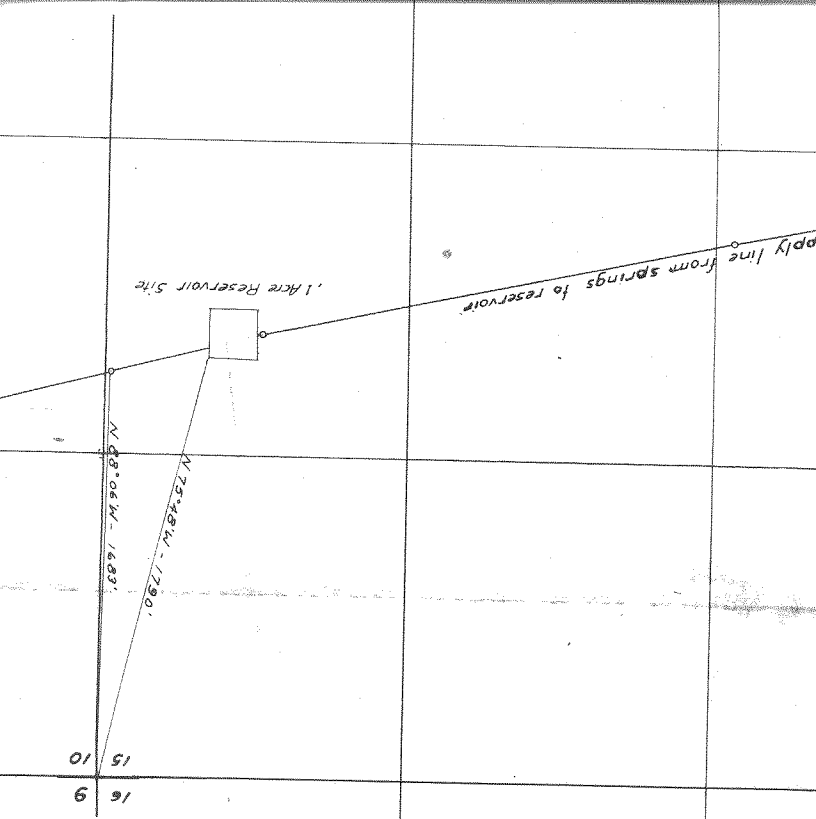
400'

ENGINEERS CERTIFICATE

I, L. E. Lucas of John Day, Oregon, do hereby certify that this map was made from notes taken during an actual survey made by me on Dec. 30-31, 1937, and that it correctly represents the location of the works throughout and has written thereon the sizes and distances of the supply and service pipes.

Engineer No. Oregon 384





T105, R30E, M1

Y

PIPE LINE LEGEND		
MARK	SIZE & TYPE	TOTAL LENGTH
---	1" SUPPLY	10750 FT.
---	2" "	750 "
---	6" SERVICE	4560 "
---	4" "	3155 "
---	2" "	1370 "
---	1 1/2" "	130 "
---	3/4" "	170 "

