

16

21

17

20

18

19

Ownership - P

The pumps used to irrigate this land have been moved and their location when in use is unknown.

WILLOW BRANCH

Spring

JOHN DAY RIVER

RIVER

SORE FOOT CREEK

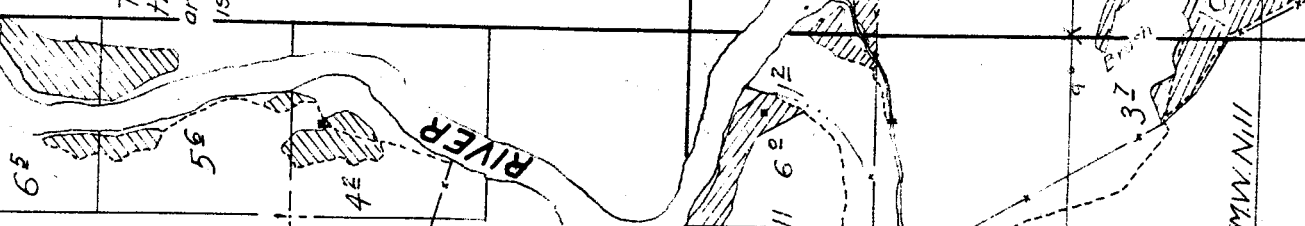
R. Campbell 6²

Sub-irrigated Meadow

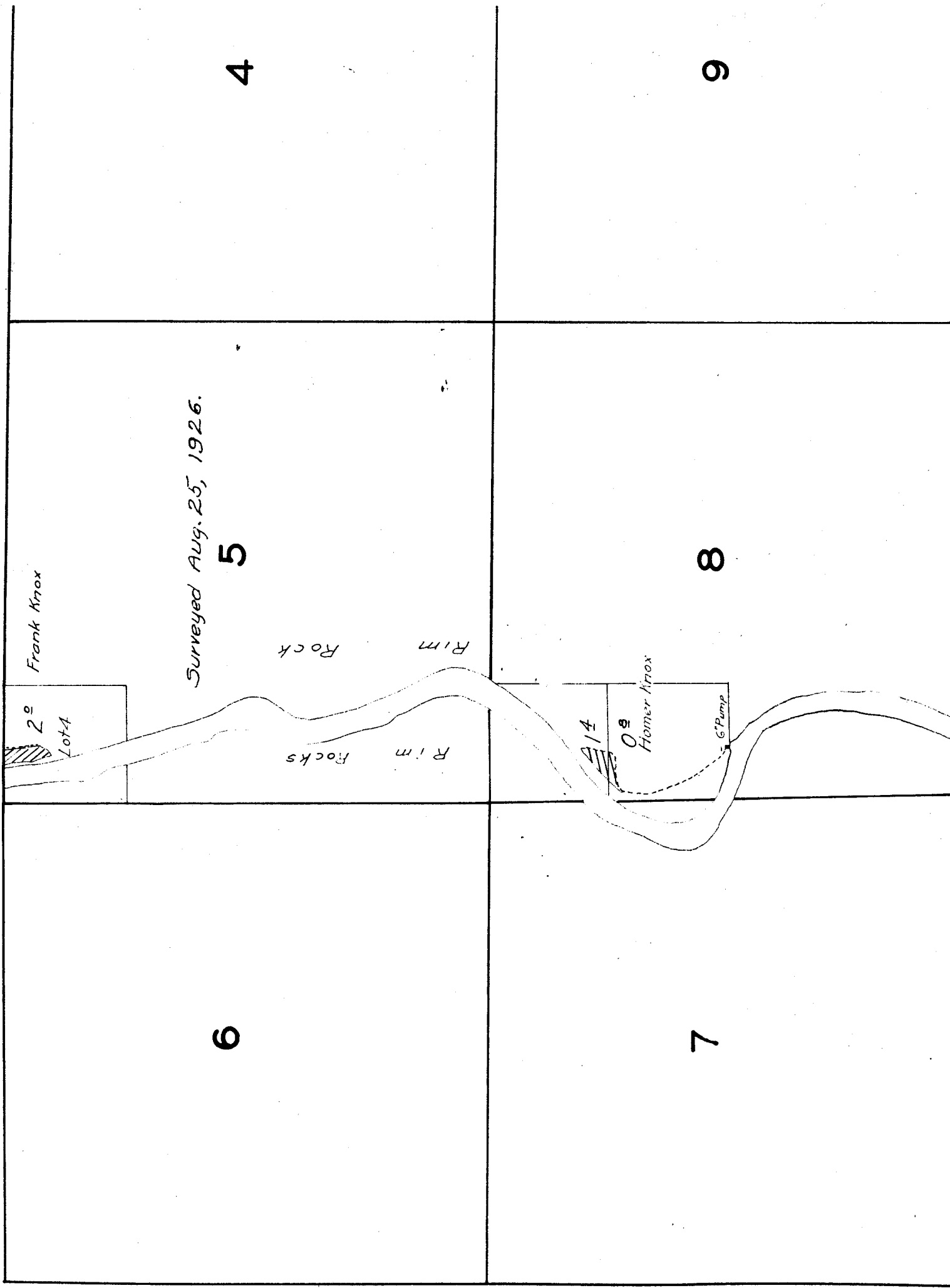
Note: Amount of land benefited by irrigation indefinite.

Surveyed Aug. 17 & 21, 1926.

P. 2643 MW. N. 111



TOWNSHIP



TOWNSHIP 7 S., RANGE 19 E.

4

3

9

10

19

20

M.W. Nill

Note: Amount of land benefited by irrigation indefinite.

Sub-irrigated Meadow

Brush & Gravel

Location of island sketched in field.

30

29

L.V. Tillatson M.W. Nill

Sub-irrigated Meadow

Sub-irrigated Meadows

31

32

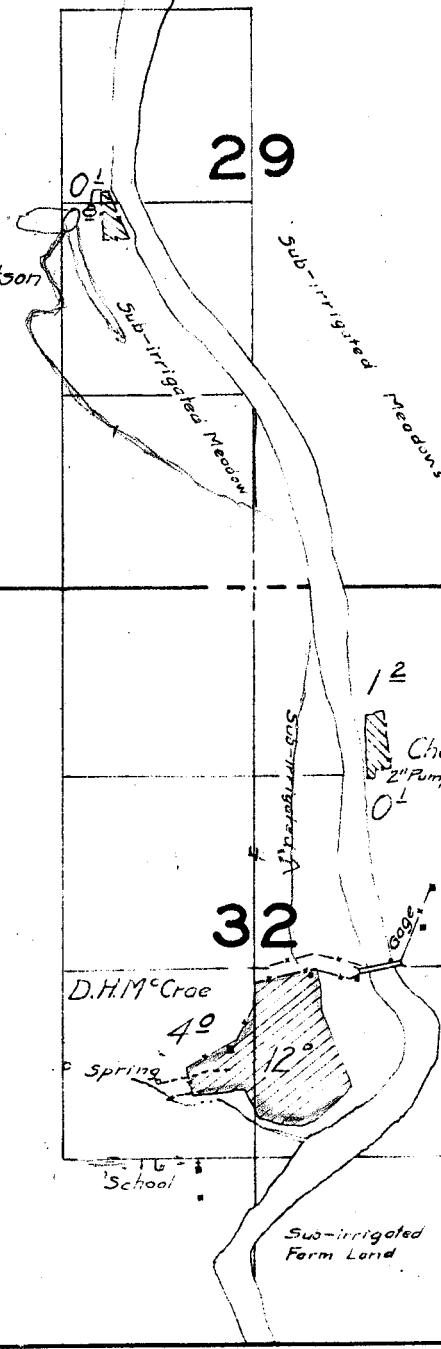
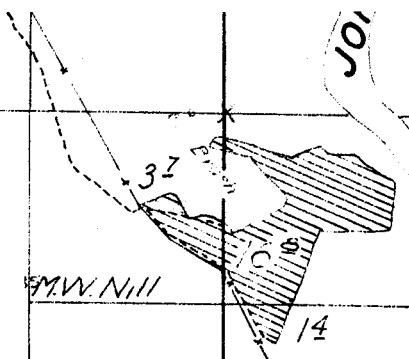
D.H.M. Crae

Spring

School

Sub-irrigated Farm Land

Charles Chap 2" Pump



23

24

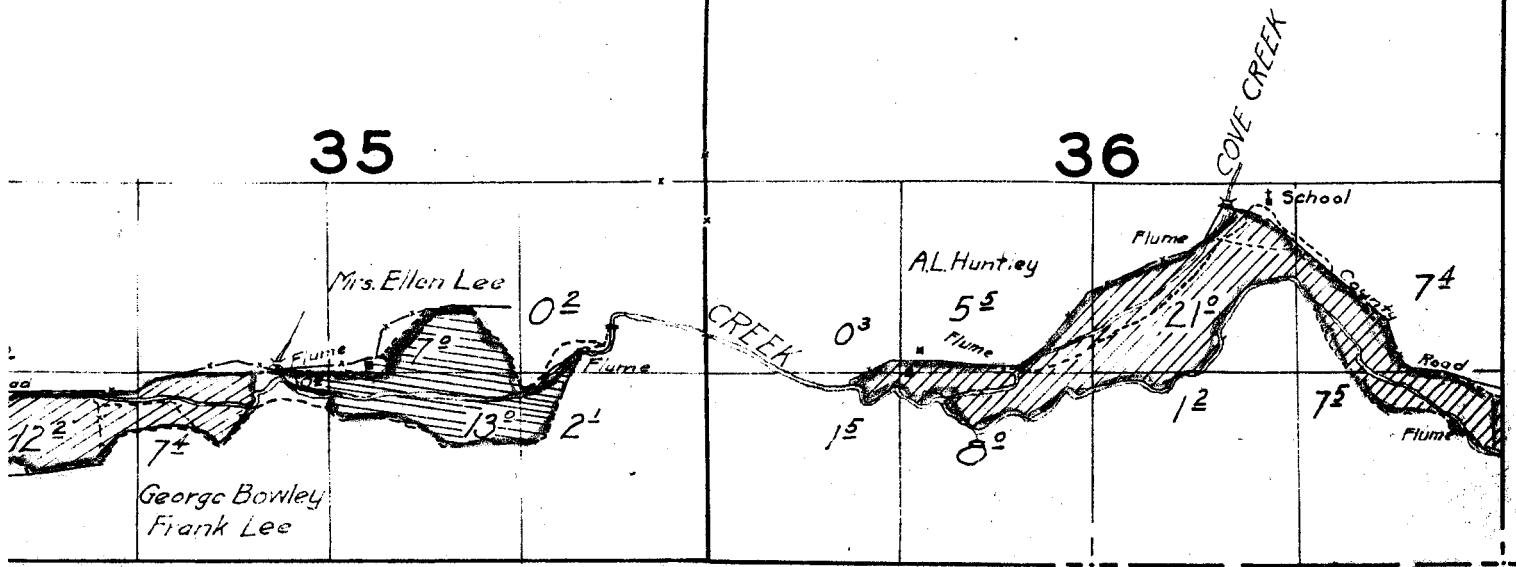
26

25

Surveyed Aug. 14, & 16, 1926.

35

36



on of island
rd in field.

red Meadows

28

27

Surveyed

12
Charles Chapman
01

Surveyed Aug. 17, 1926.

33

34

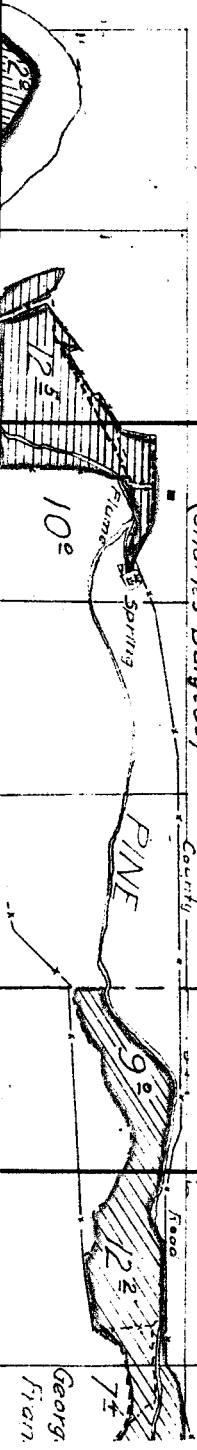


Charles Hithon
(Charles Burgess)

County

Area

rigged
and



Georg.
Plan

16

15

21

22

NOTE: Streams and river, except in the vicinity of irrigated land, sketched in approximate location.

3	2	1
10	11	12

15

14

13

22

23

24

nd river, except in the
ted land, sketched in
tion.