

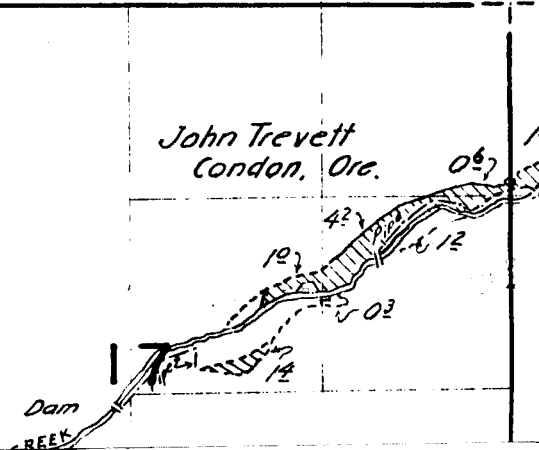
6

5

7

8

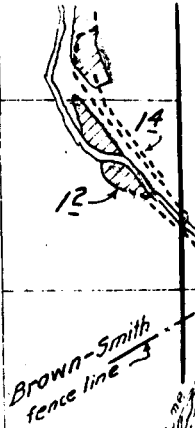
18



21

Surveyed May 12 and 13, 1925.

22



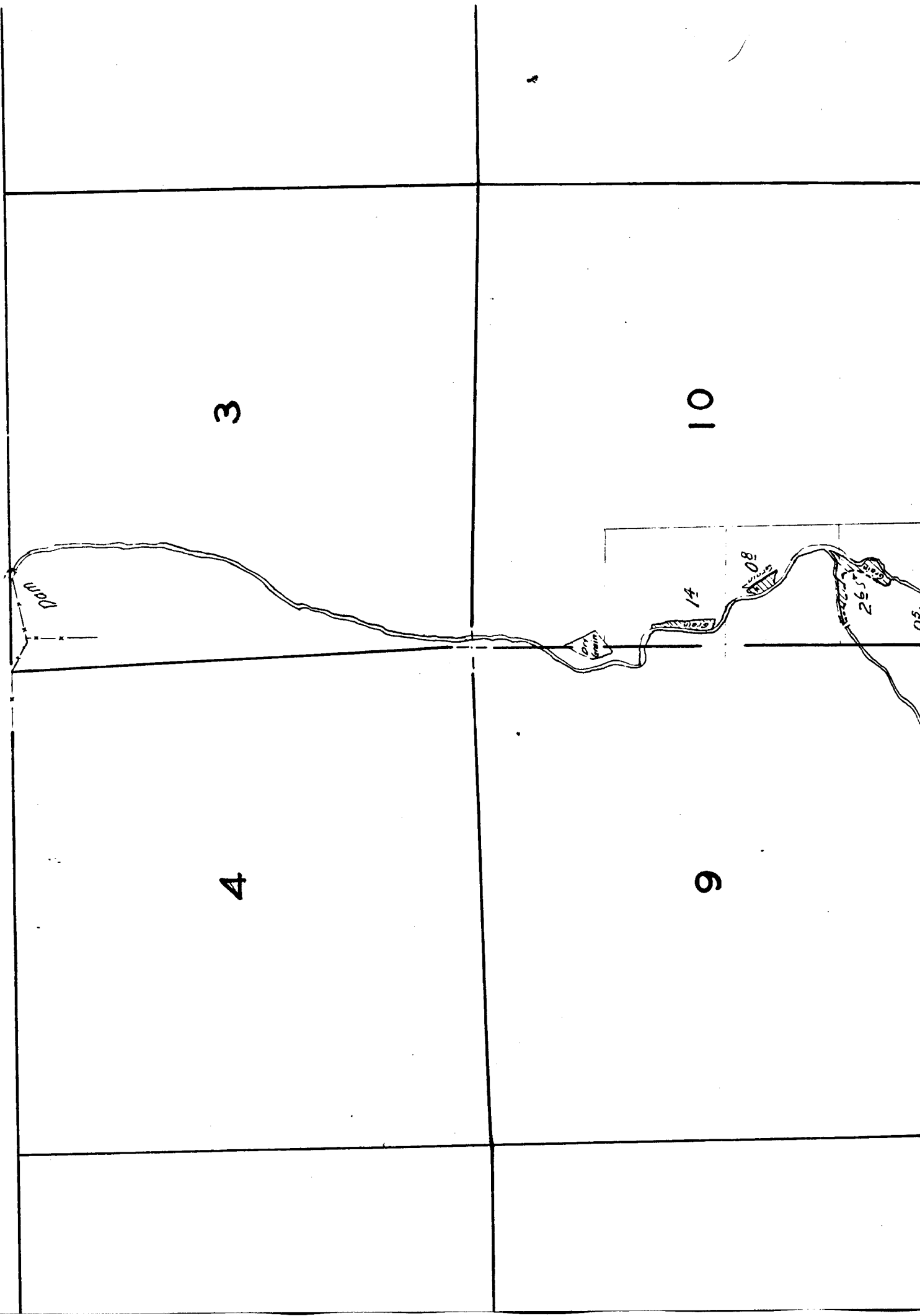
28

27

33

34

TOWNSHIP 3 S., RANGE 22 E..



30

29

28

31

32

33

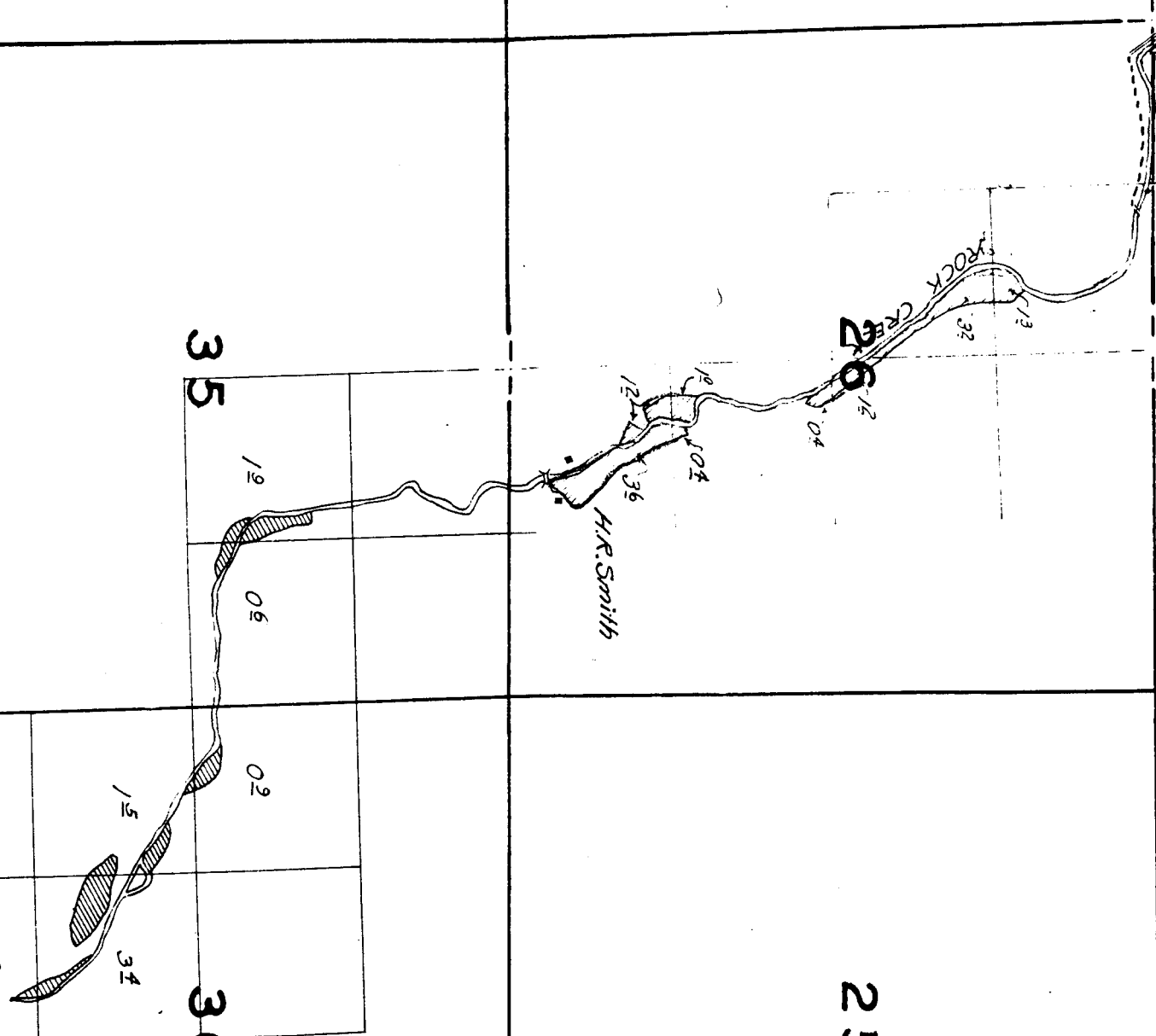
27

25

34

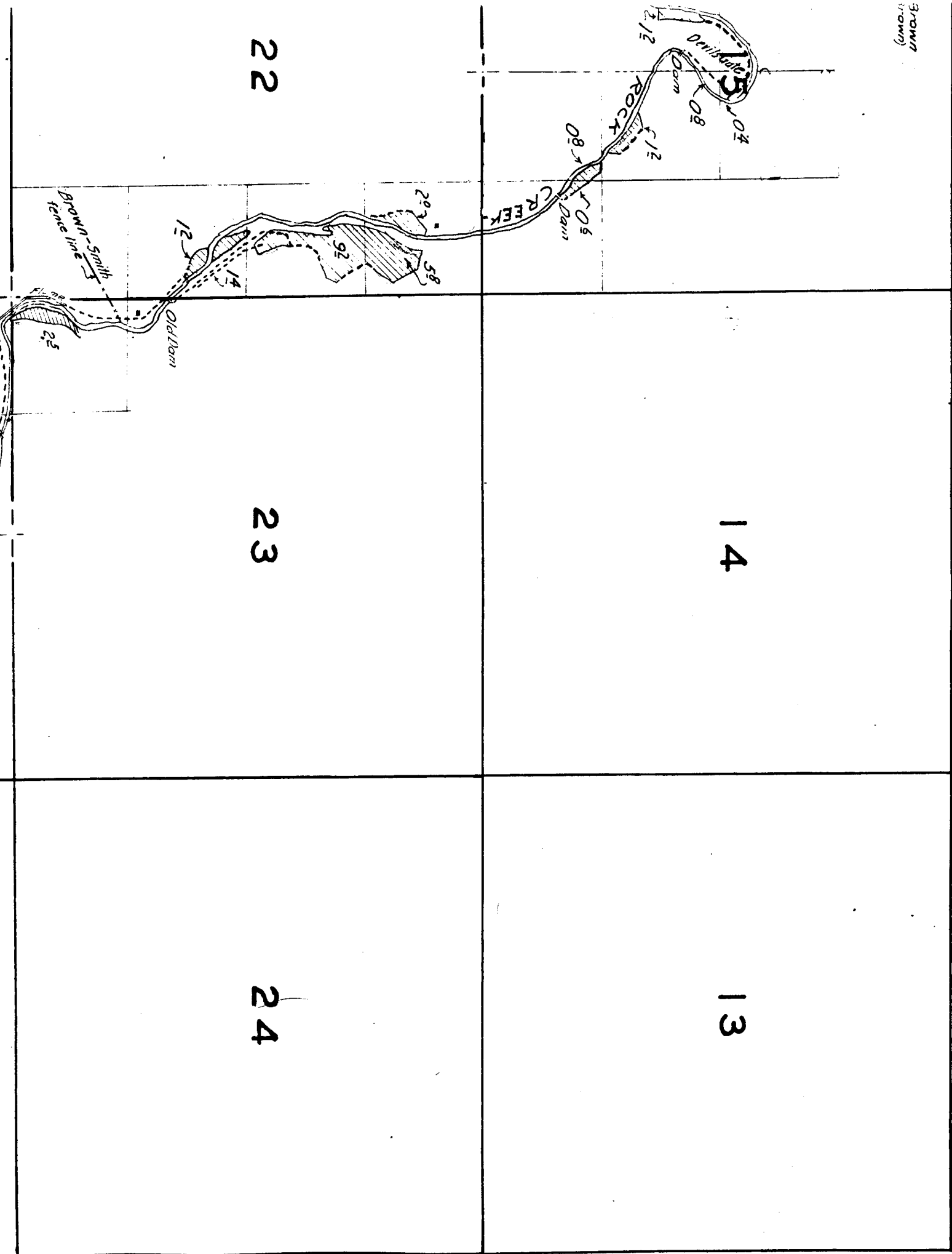
35

36



Willist E. Burton
 Surveyed June, 1927.

BROWN
(BROWN)



2

1

11

12

14

13