

2

1

11

12

14

13

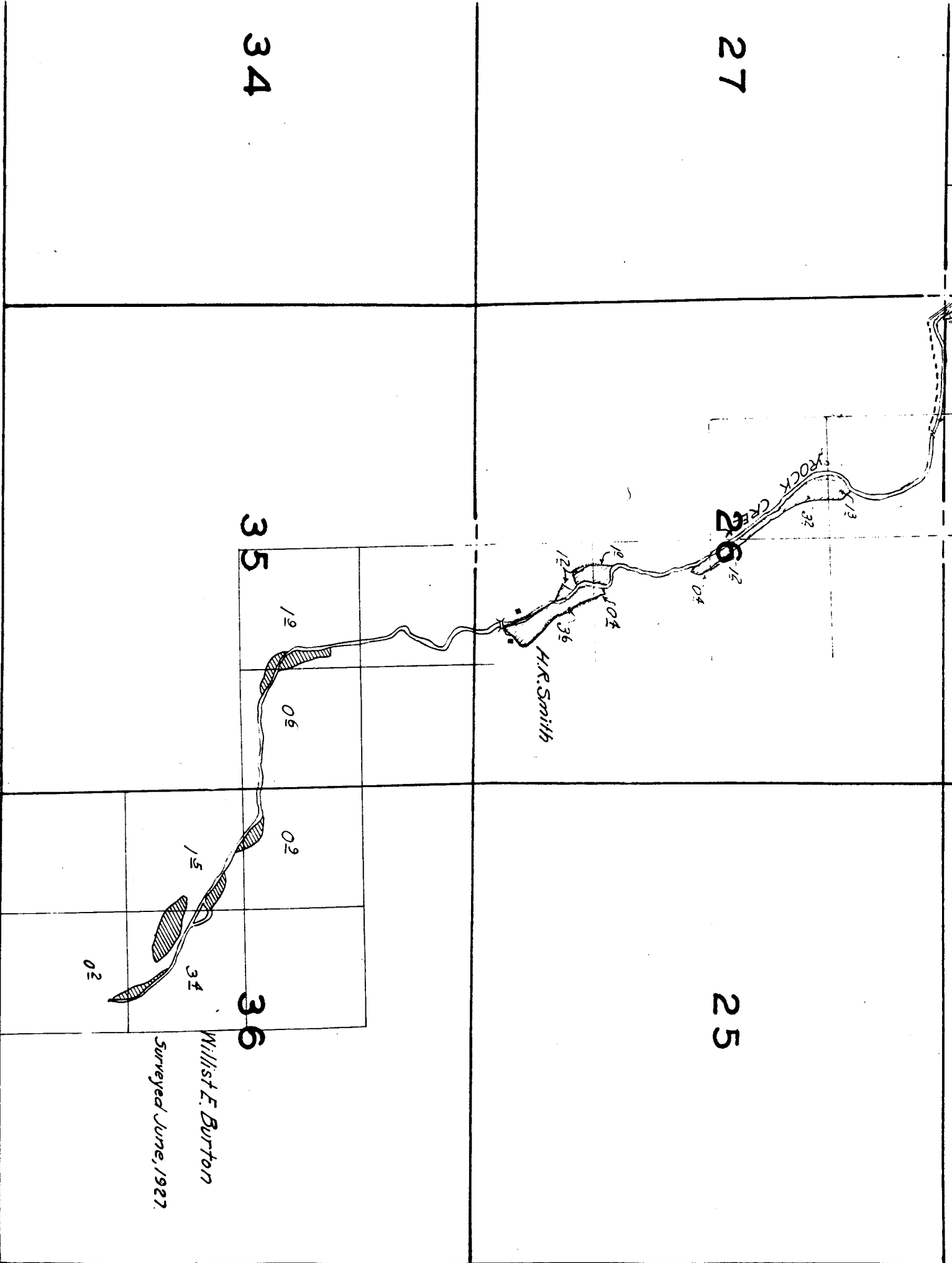
27

25

34

35

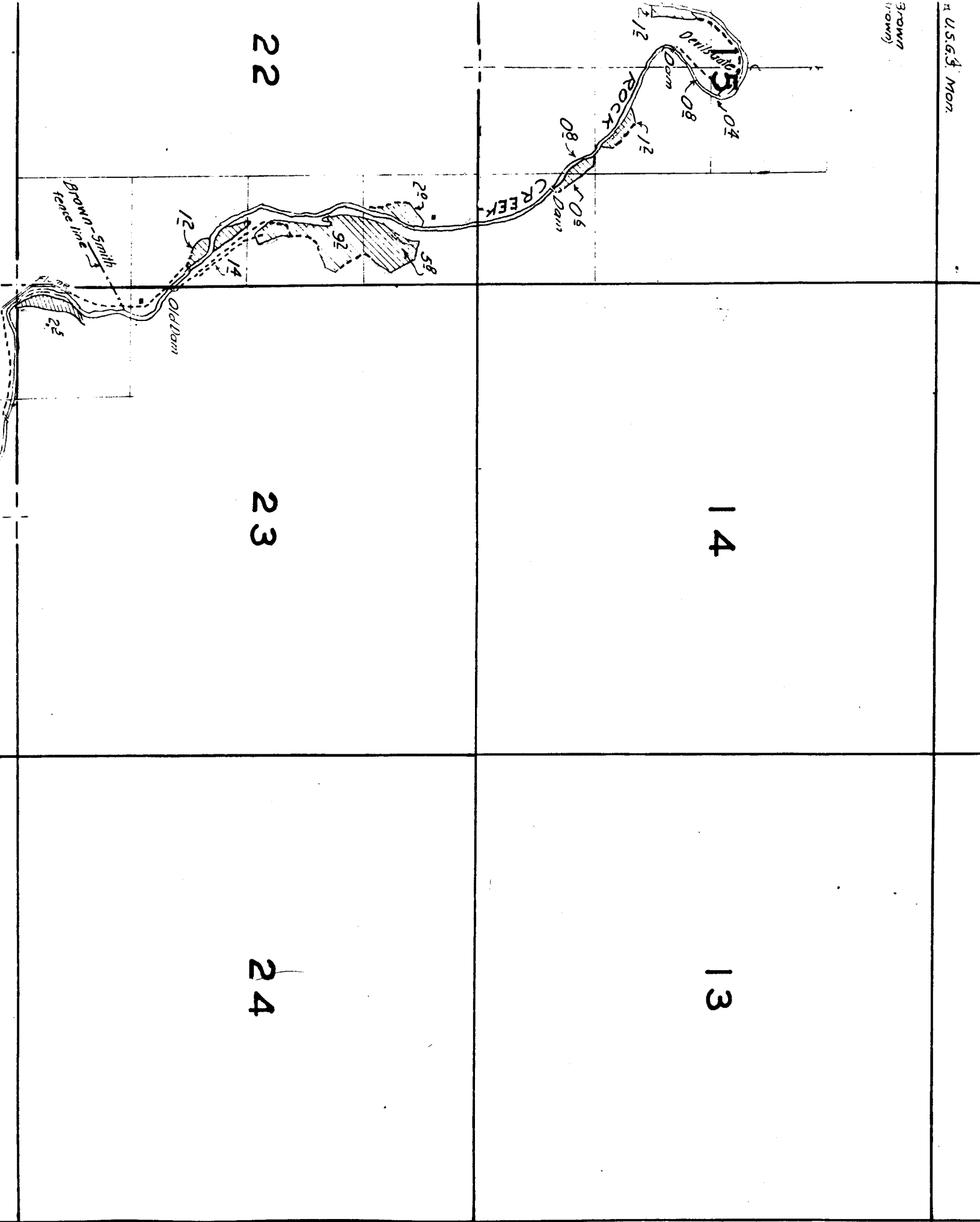
36



H.R. Smith

Willist E. Burton
Surveyed June, 1927.

BROWN
(Brown)



30

29

28

31

32

33

18

16

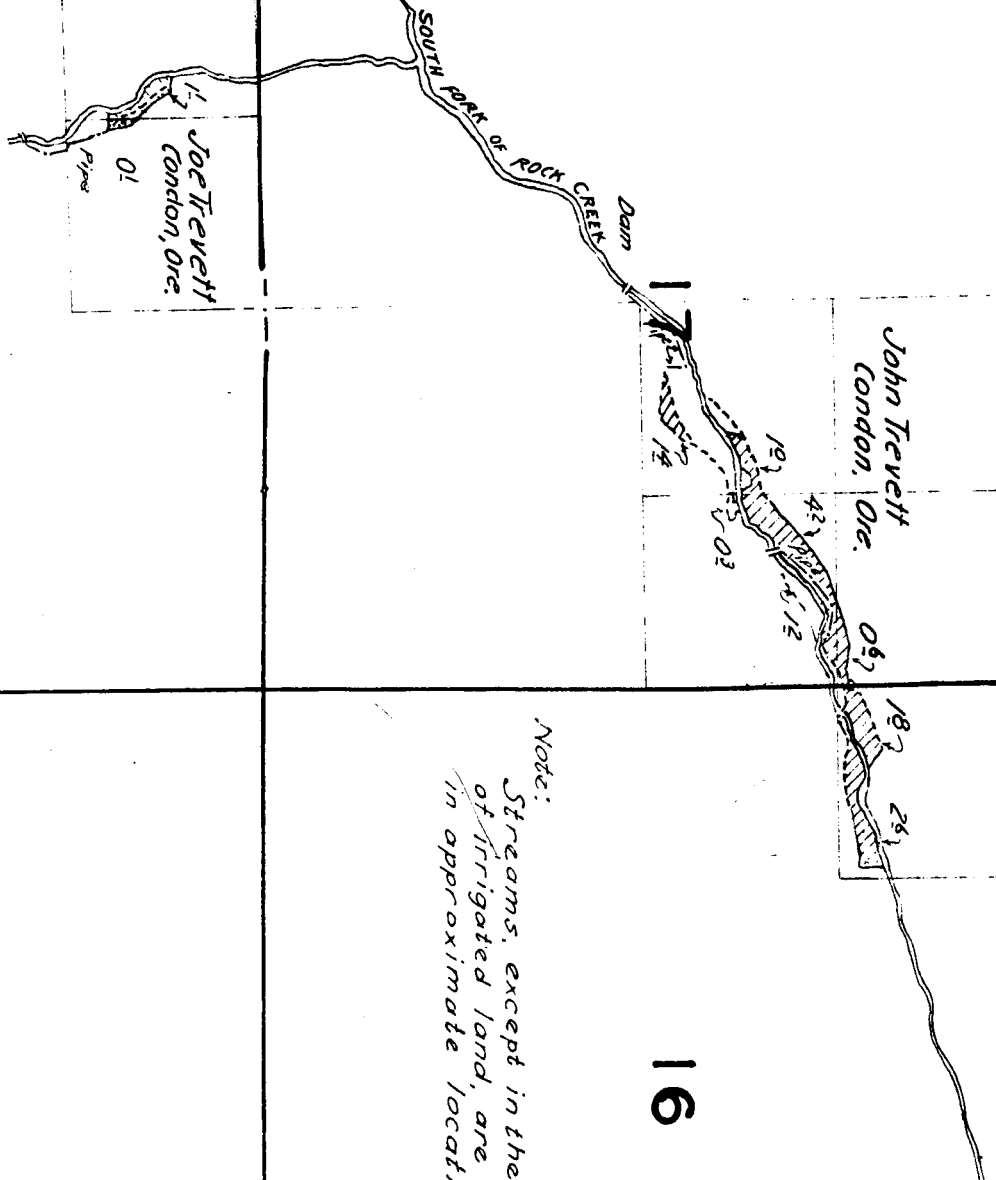
19

20

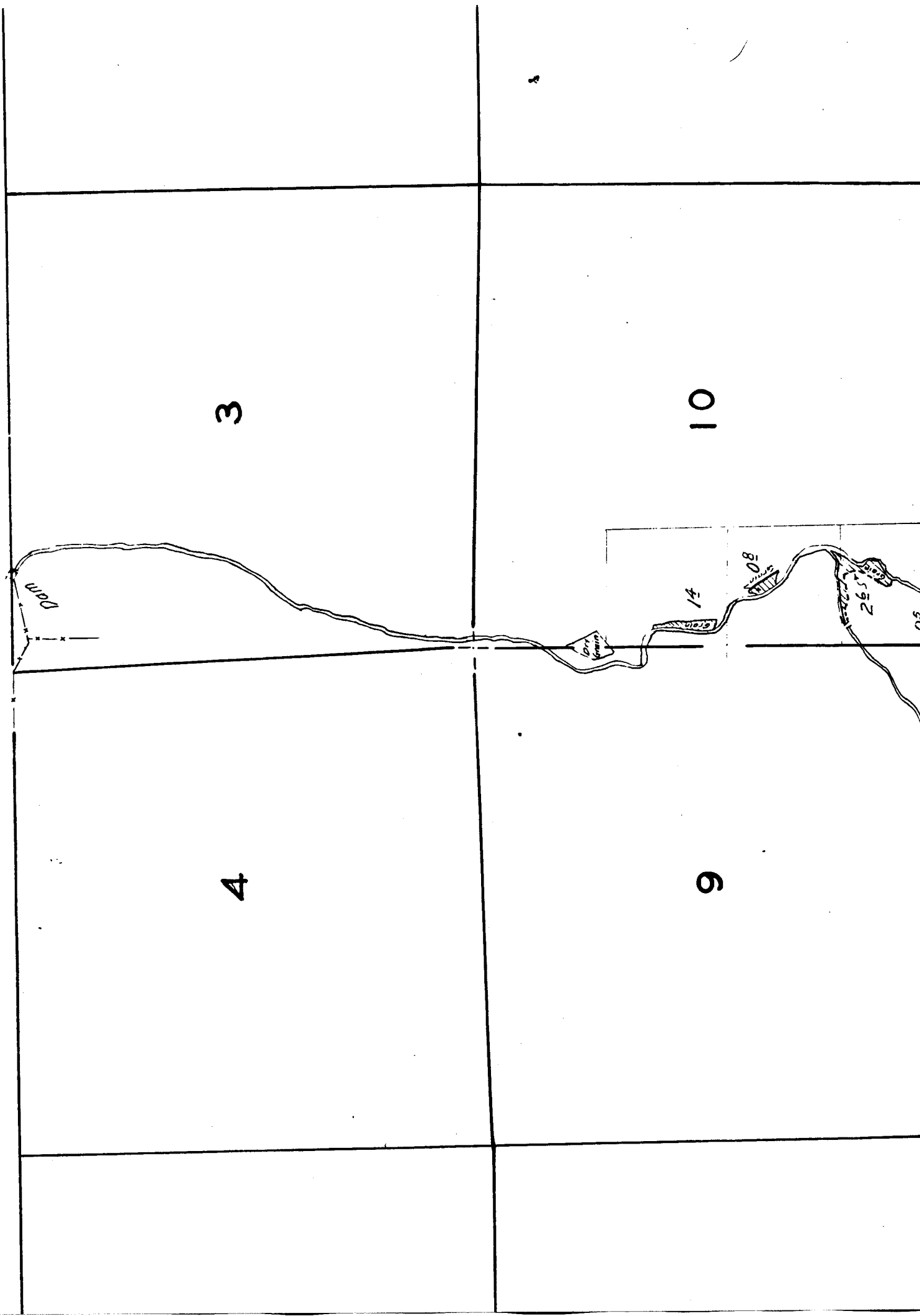
21

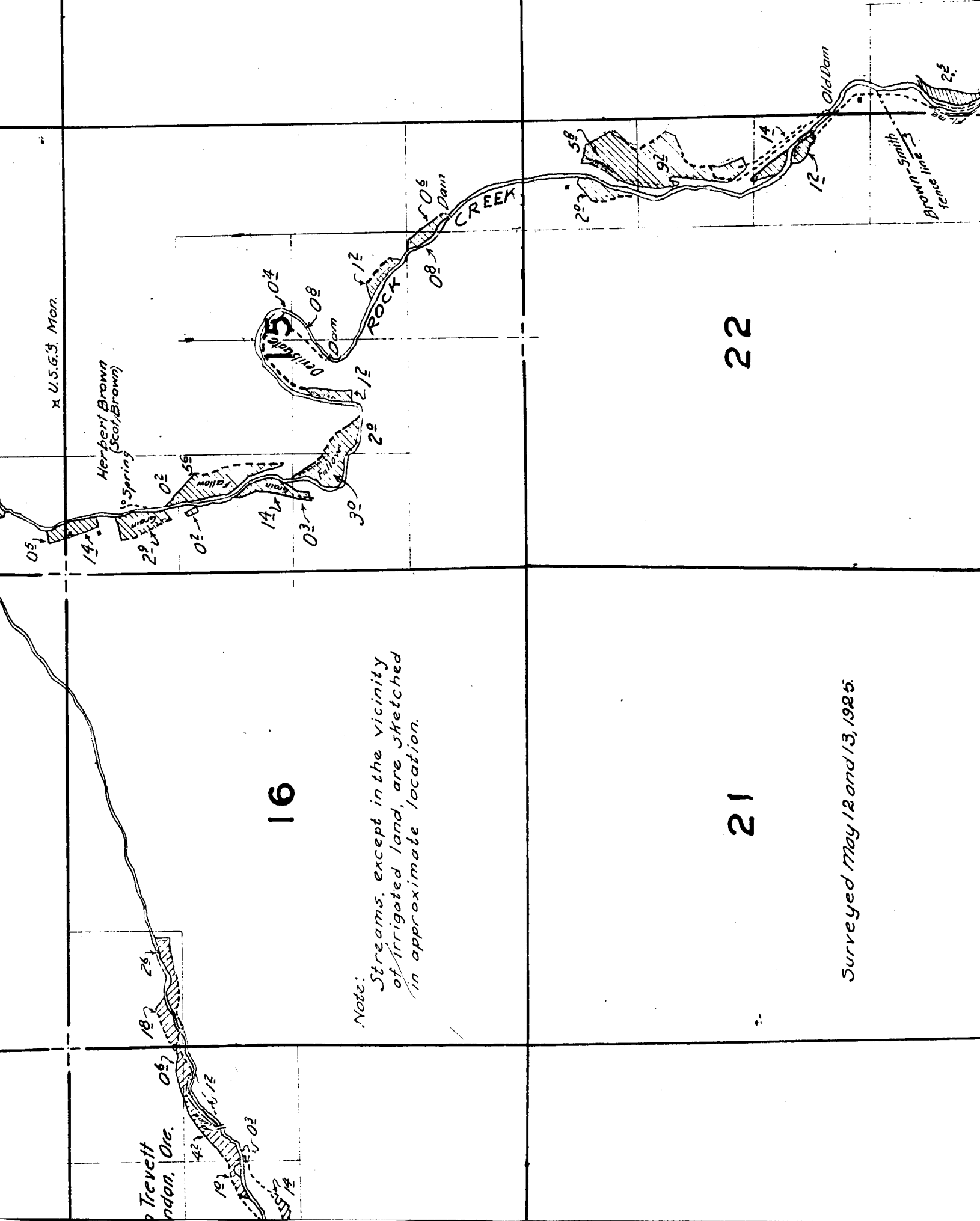
Note:
Streams, except in the
of irrigated land, are
in approximate locati

Surveyed May 12 and 13



TOWNSHIP 3 S., RANGE 22 E..





16

22

21

Note:
Streams, except in the vicinity
of irrigated land, are sketched
in approximate location.

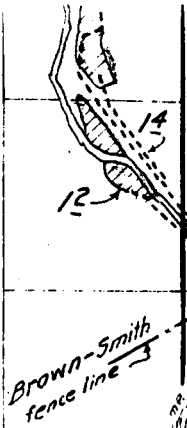
Surveyed May 12 and 13, 1925.

Trevett
ndon, Ore.

21

Surveyed May 12 and 13, 1925.

22



28

27

33

34

6

5

7

8

18

