

6

5

7

8

18

17

2

1

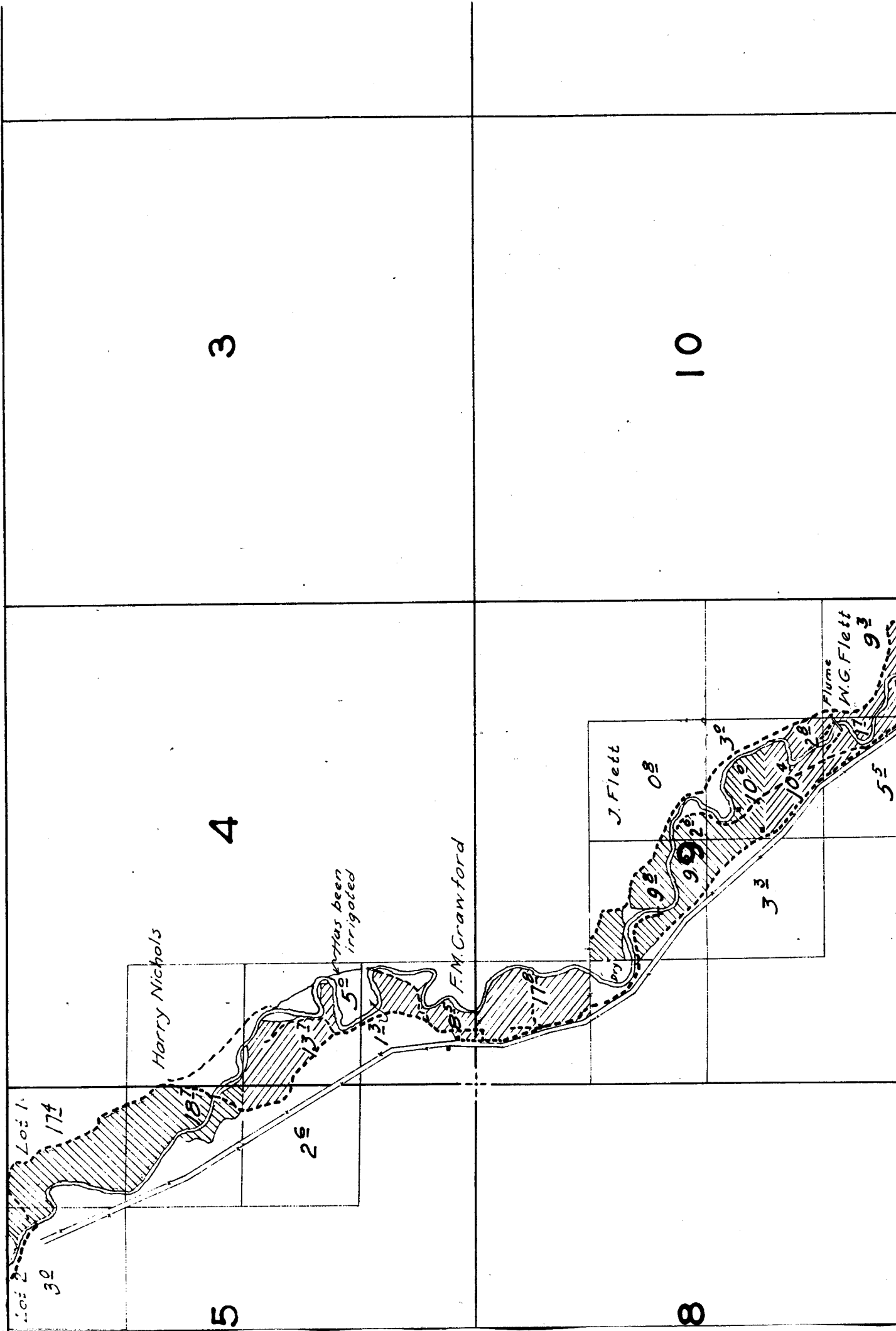
11

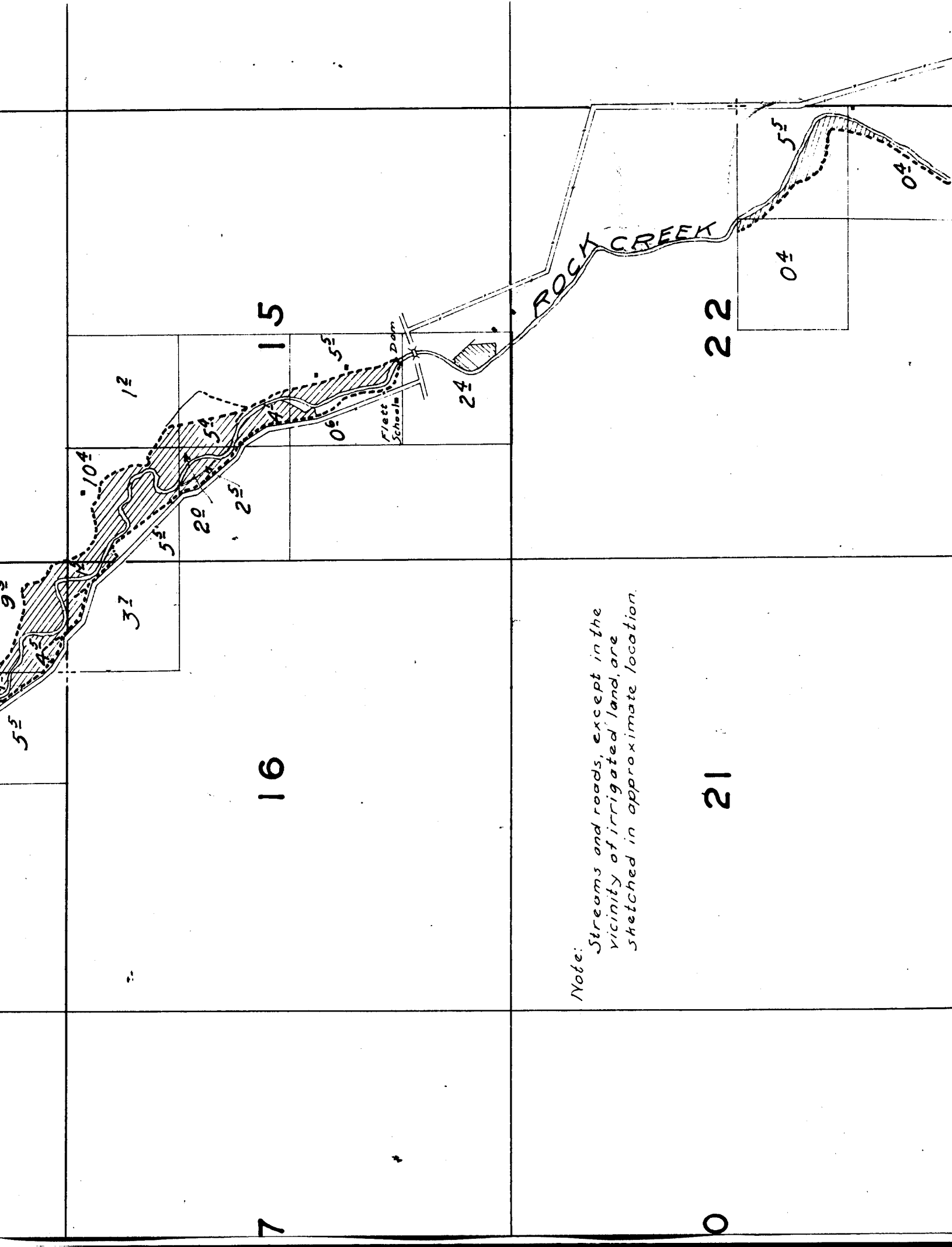
12

14

13

TOWNSHIP 2 S., RANGE 22 E.





Note: Streams and roads, except in the vicinity of irrigated land, are sketched in approximate location.

21

22

1953 132

04

55

04

10°

Gage 56

22

28

27

28

Surveyed May 5 to May 9, 1925.

ROCK CREEK
NEW
40

N.M. Johnson
West of S.E. Co.
at this point

33

28

74

34

R.L. Graham

08

Grain 18

Flume

36

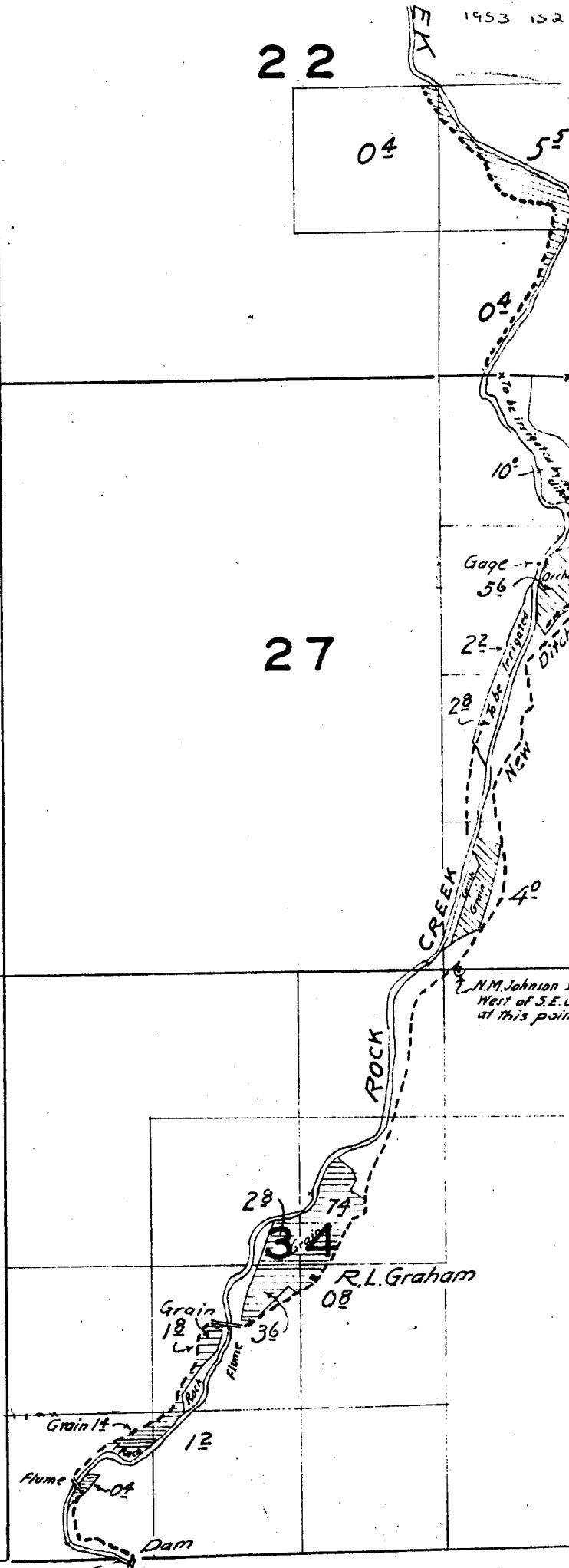
Grain 14

12

Flume

04

Dam



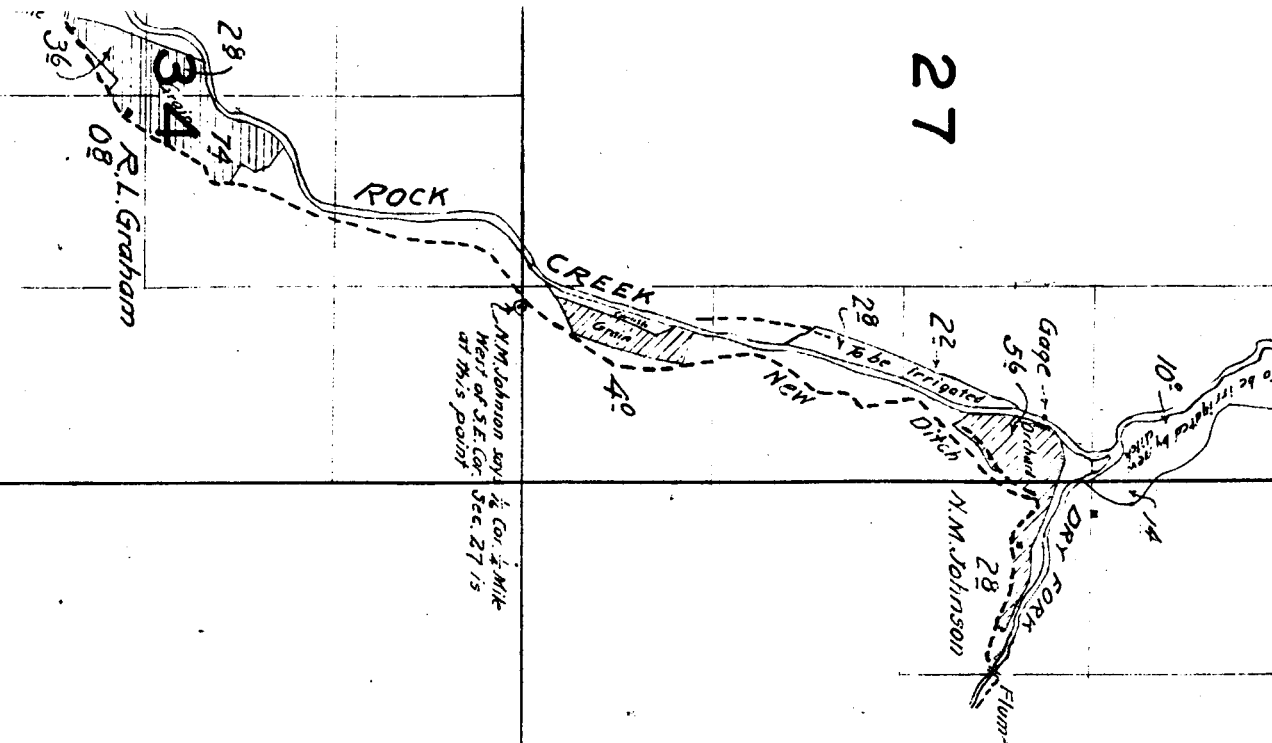
27

26

25

35

36



12

12

15

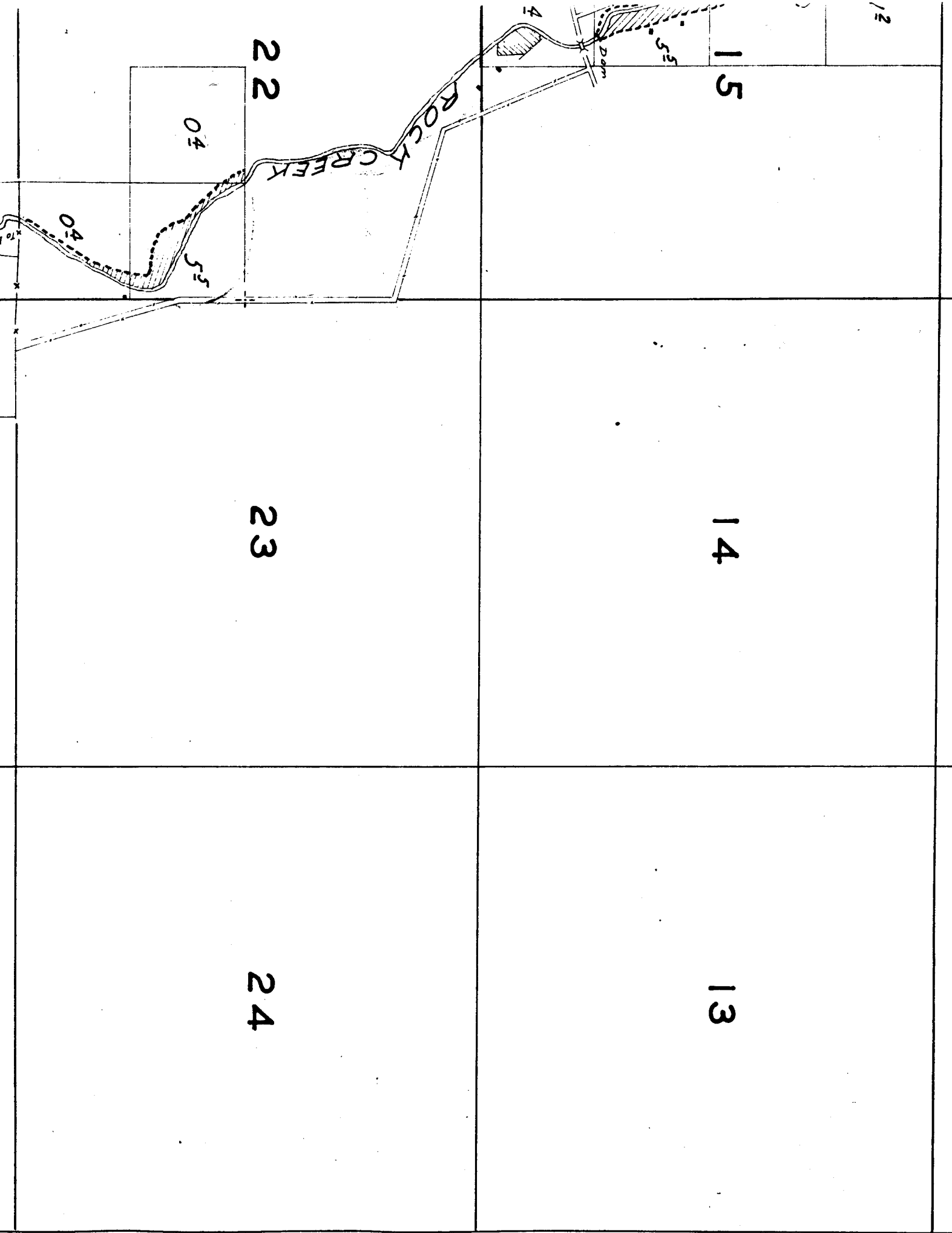
14

13

22

23

24



30

29

28

Surveyed May 5 to May

31

32

33

18

17

16

19

20

21

*Note:
Streams and roads, ex
vicinity of irrigated
sketched in approxim*