

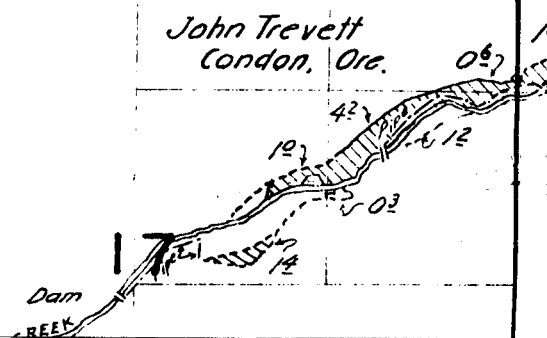
6

5

7

8

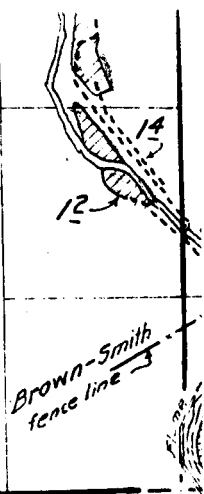
18



21

Surveyed May 12 and 13, 1925.

22



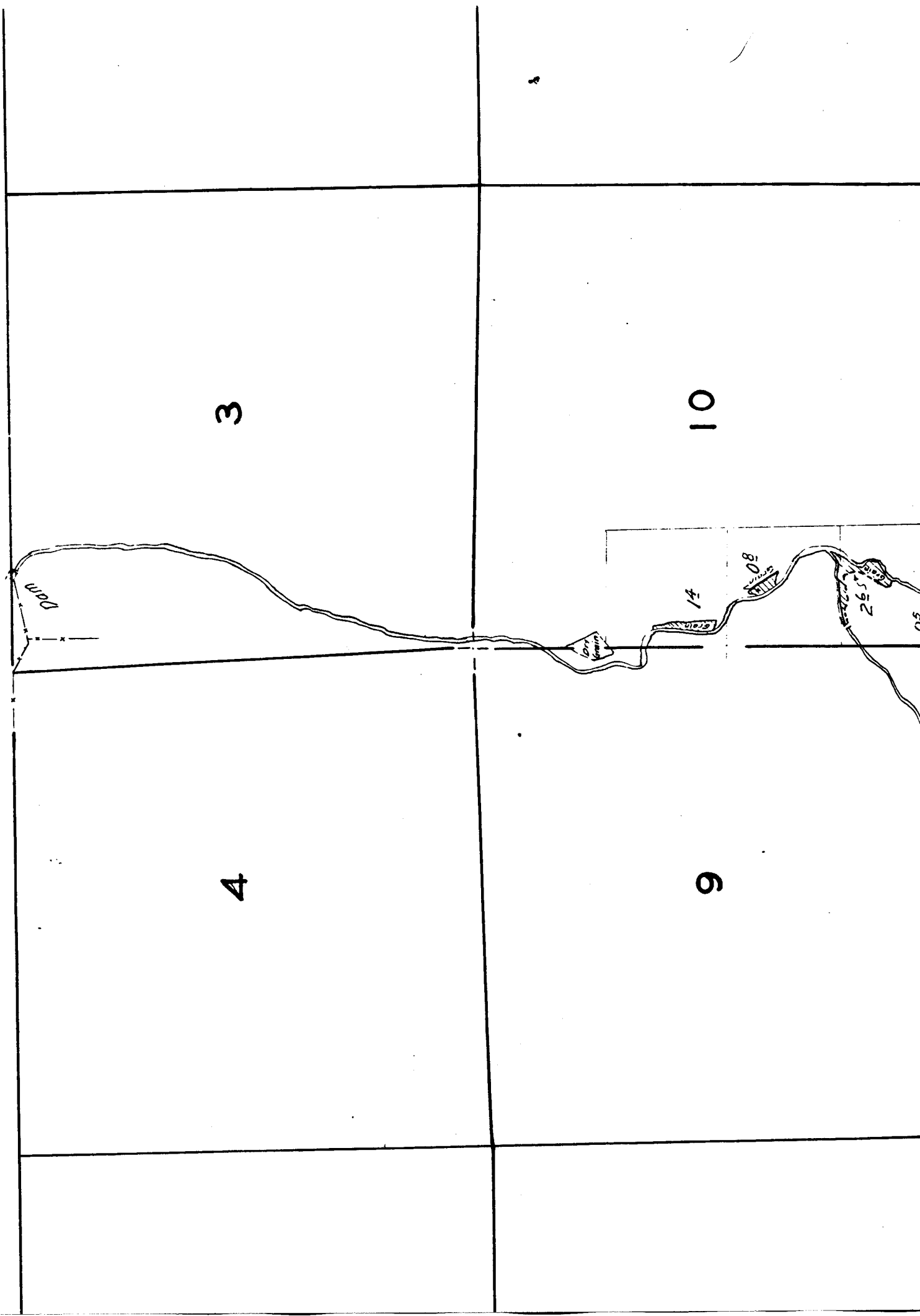
28

27

33

34

TOWNSHIP 3 S., RANGE 22 E.



U.S.G.S. Mon.

Herbert Brown  
(Scott, Brown)

Spring

Trevett  
ndon, Ore.

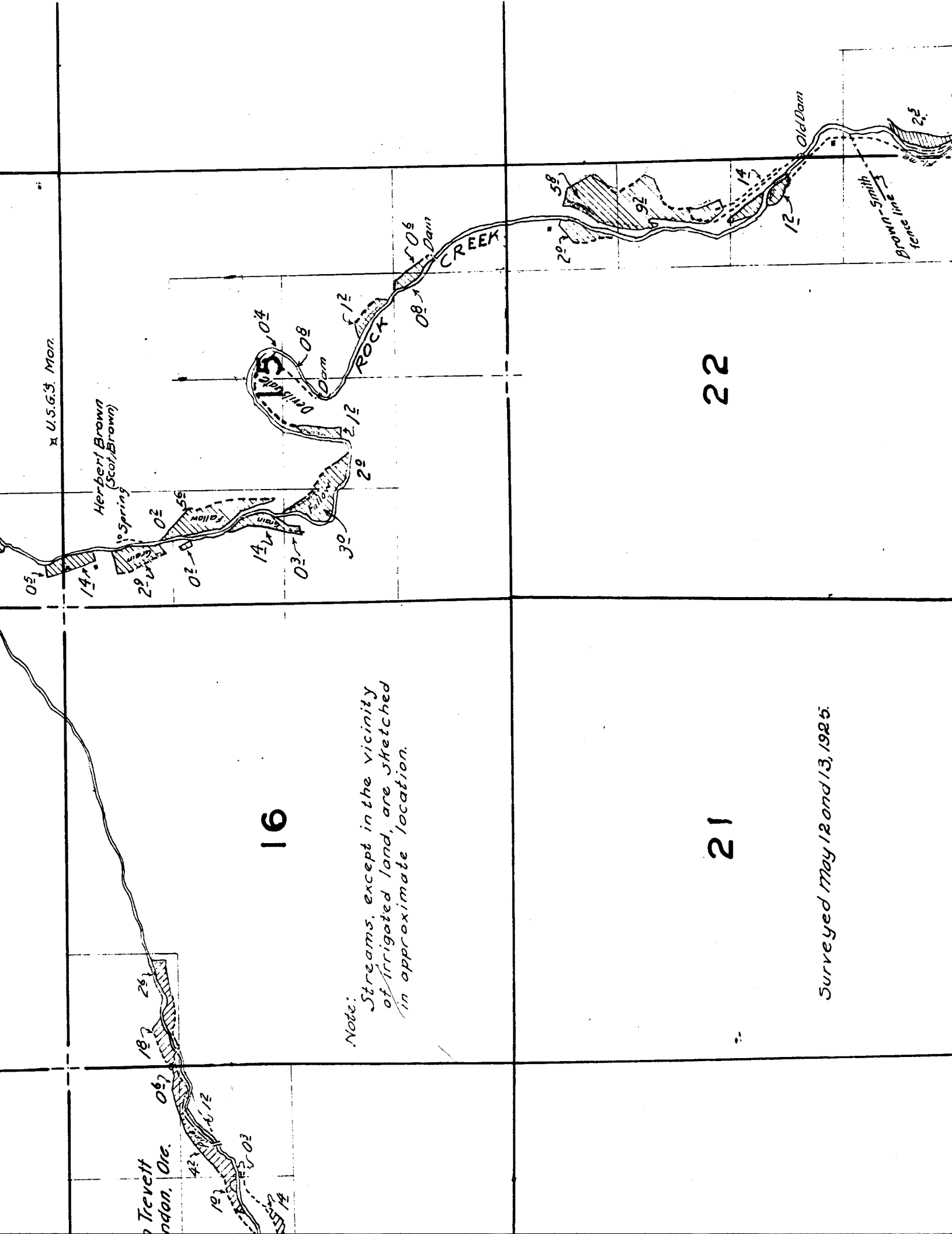
16

Note:  
Streams, except in the vicinity  
of irrigated land, are sketched  
in approximate location.

21

22

Surveyed May 12 and 13, 1925.



30

31

29

32

28

33

18

16

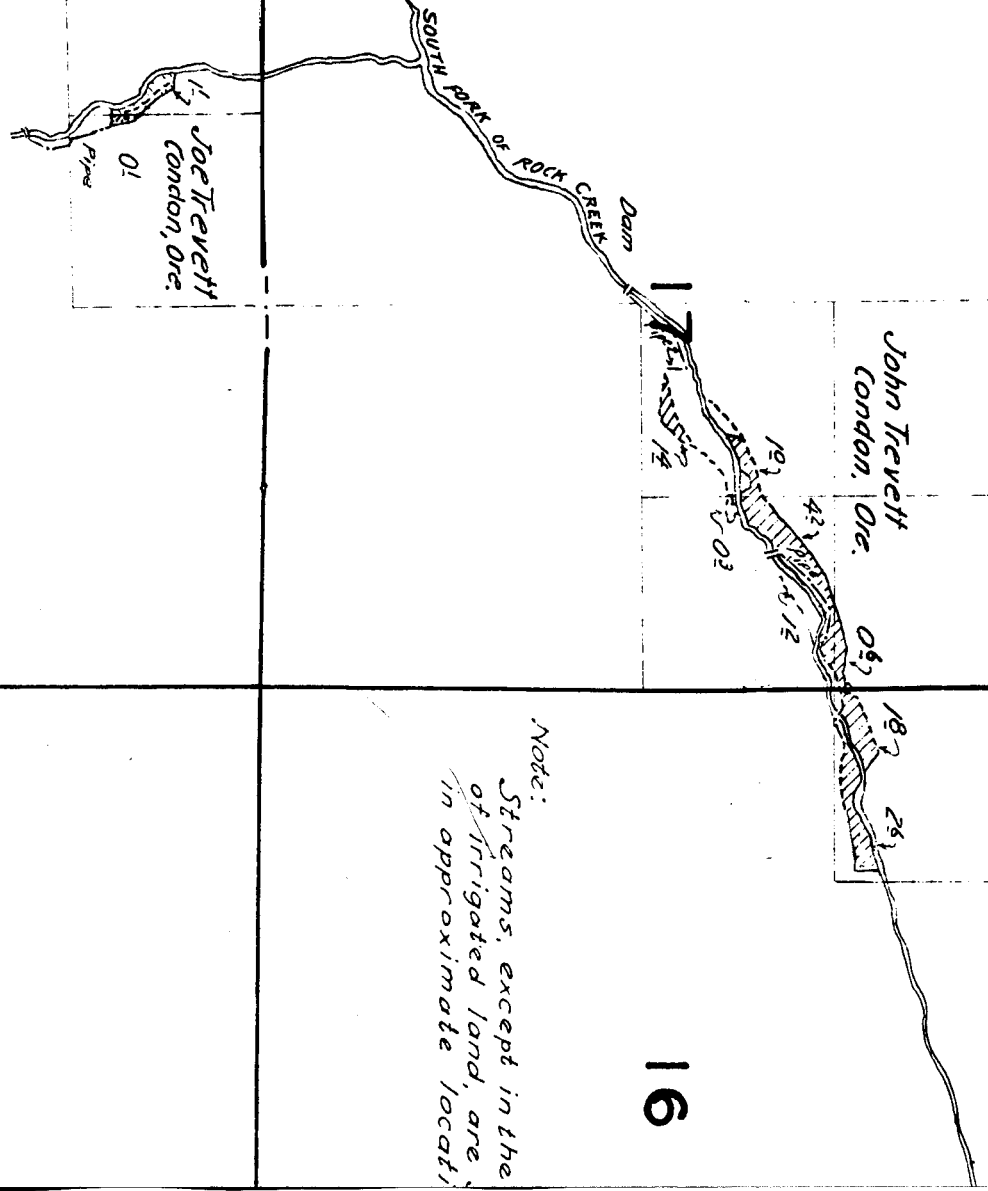
19

20

21

Note:  
Streams, except in the  
of irrigated land, are  
in approximate locati

Surveyed May 18 and 18



John Trevett  
Condon, Ore.

Joe Trevett  
Condon, Ore.

SOUTH FORK OF ROCK CREEK

Dam

Pond

Pipe

18 1/2

19 1/2

20 1/2

18 1/2

19 1/2

20 1/2

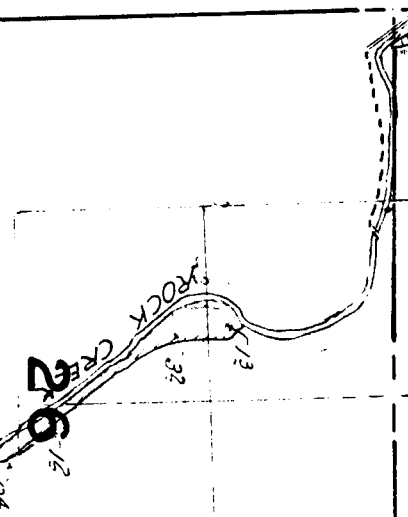
27

25

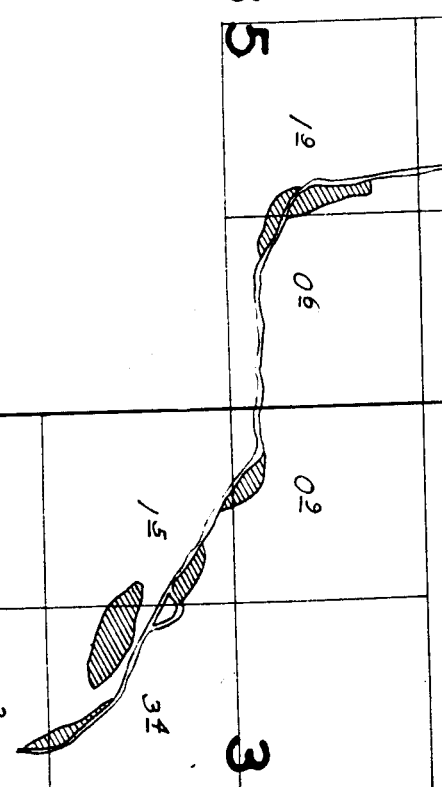
34

35

36

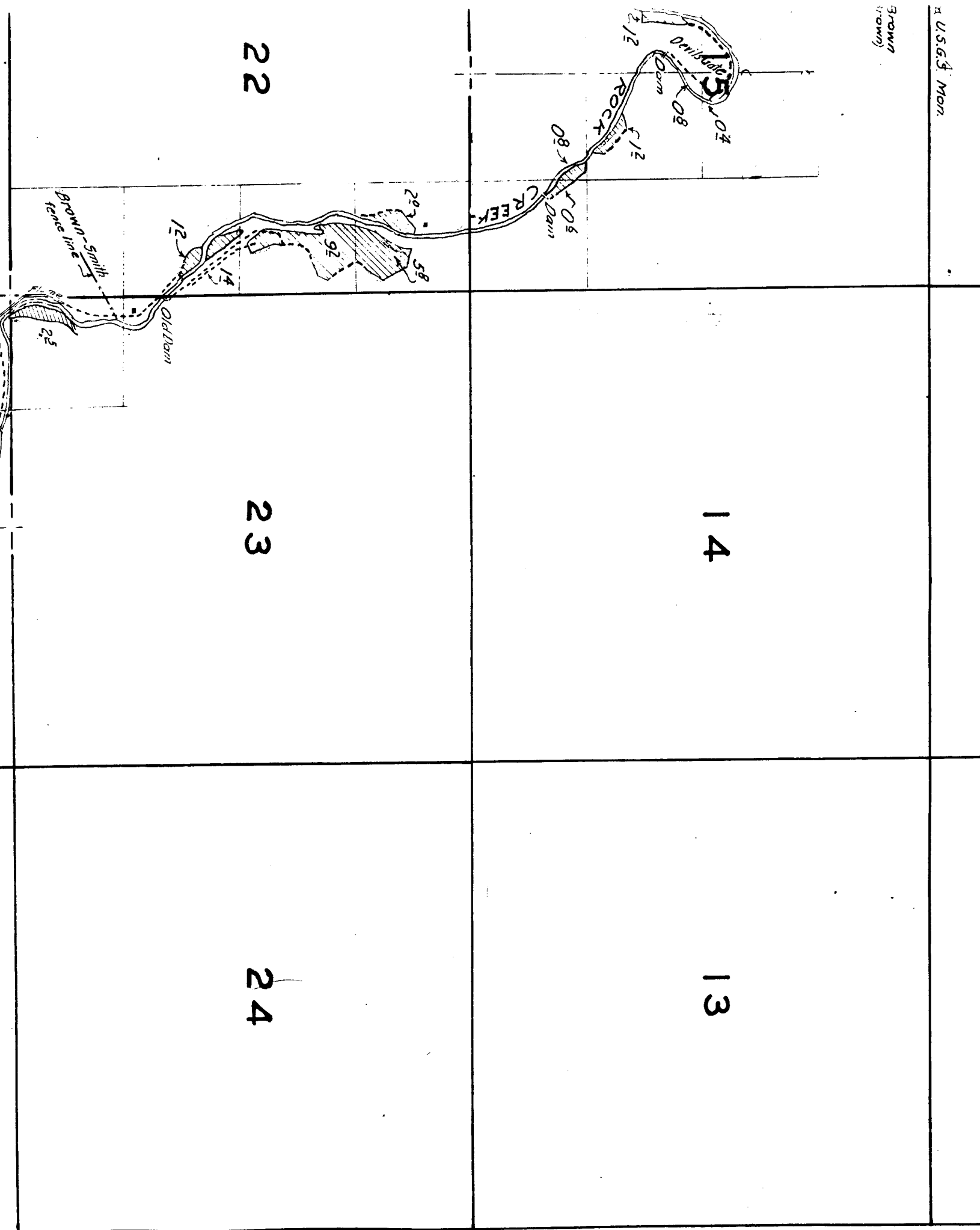


H.R. Smith



Willist E. Burton  
Surveyed June, 1927.

BROWN  
(1900)





2

1

11

12

14

13