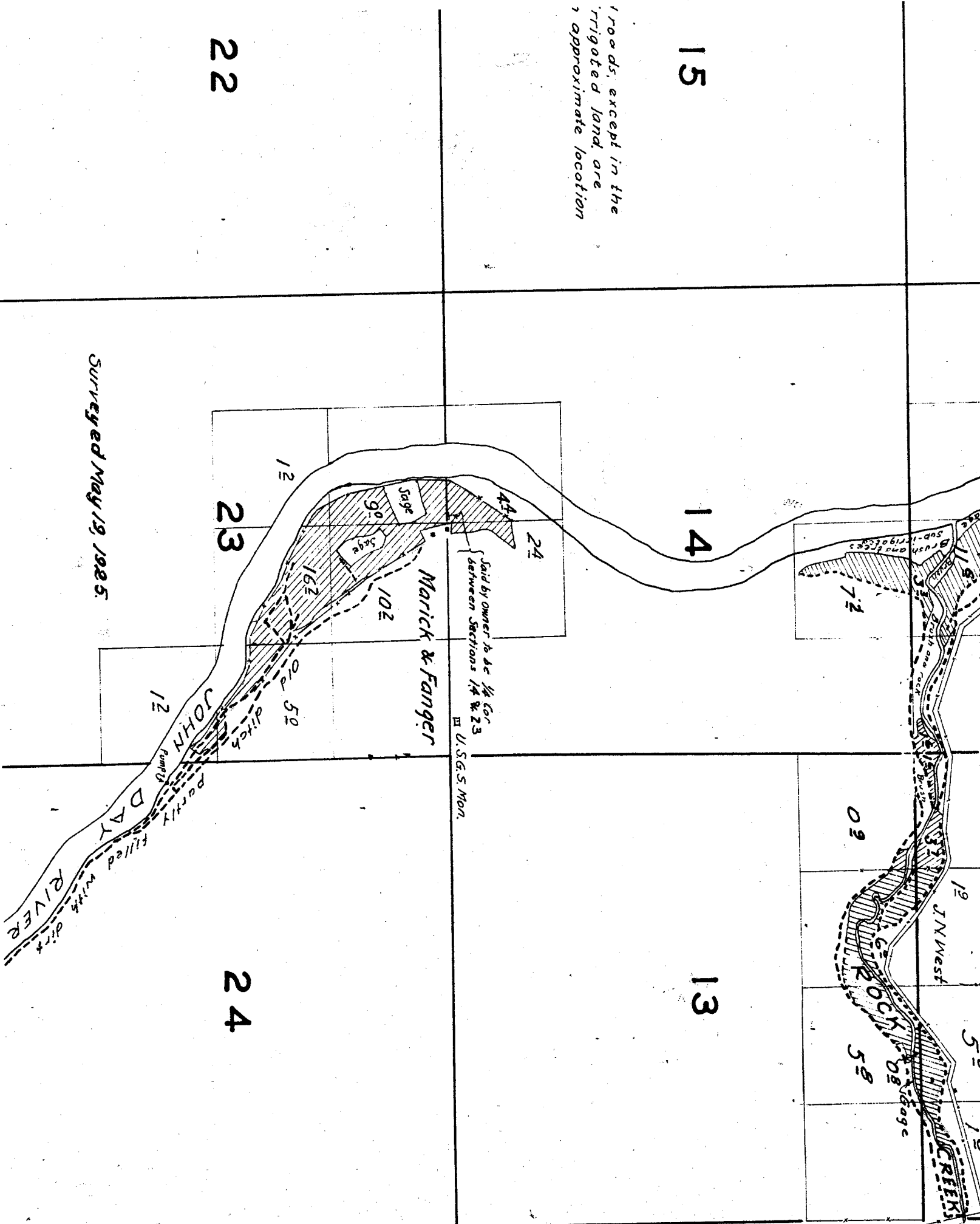


1700 ds. except in the  
irrigated land, are  
approximate location

15

22

Surveyed May 19, 1925.



14

13

23

24

Marick & Fanger

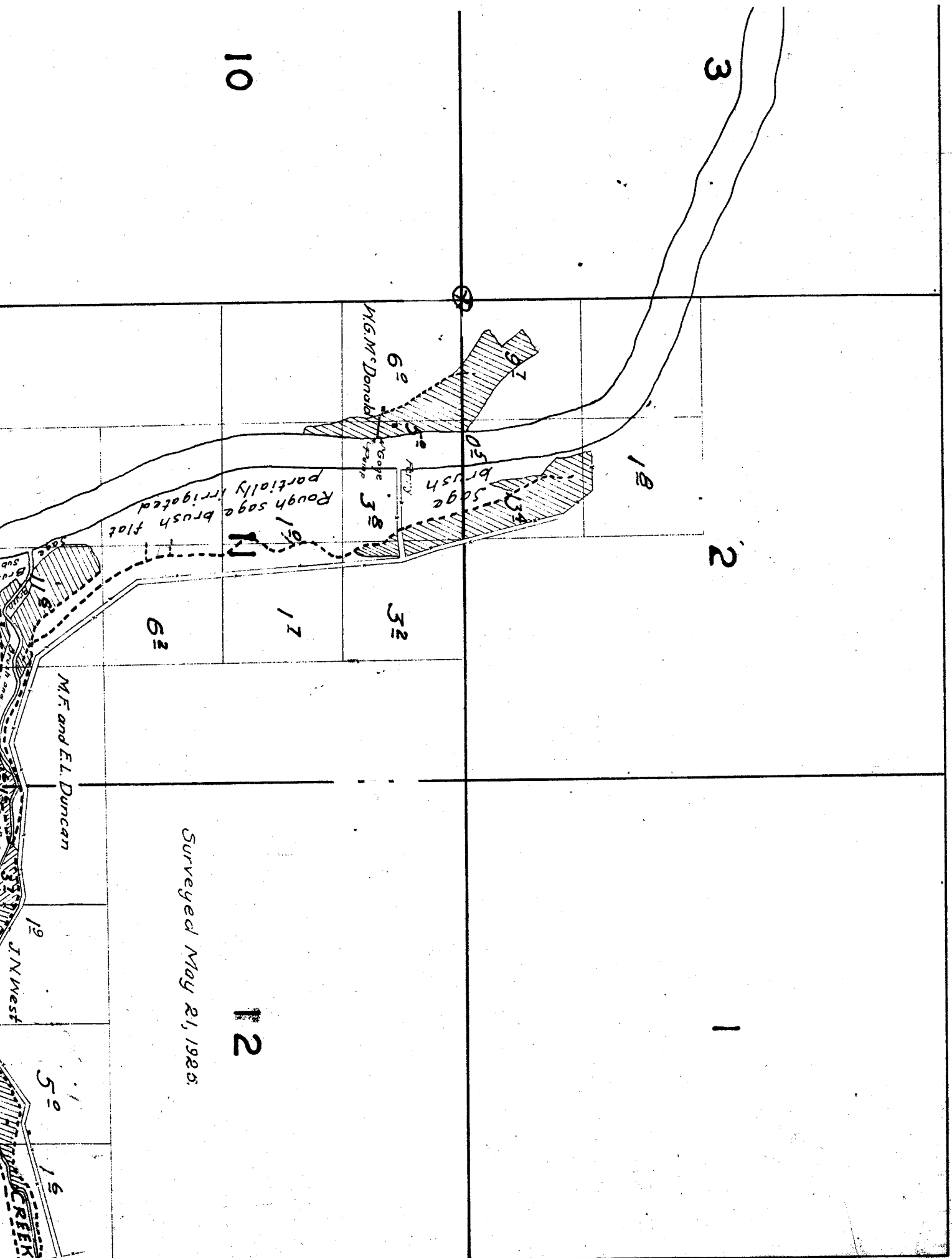
Said by owner to be 1/4 Cor  
between Sections 14 & 23  
U.S.G.S. Mon.

JOHN DAY RIVER

PARTLY FILLED WITH DIRT RIVER

JN West

REKX



Surveyed May 21, 1925.

M.F. and E.L. Duncan

M.G.M. Donald

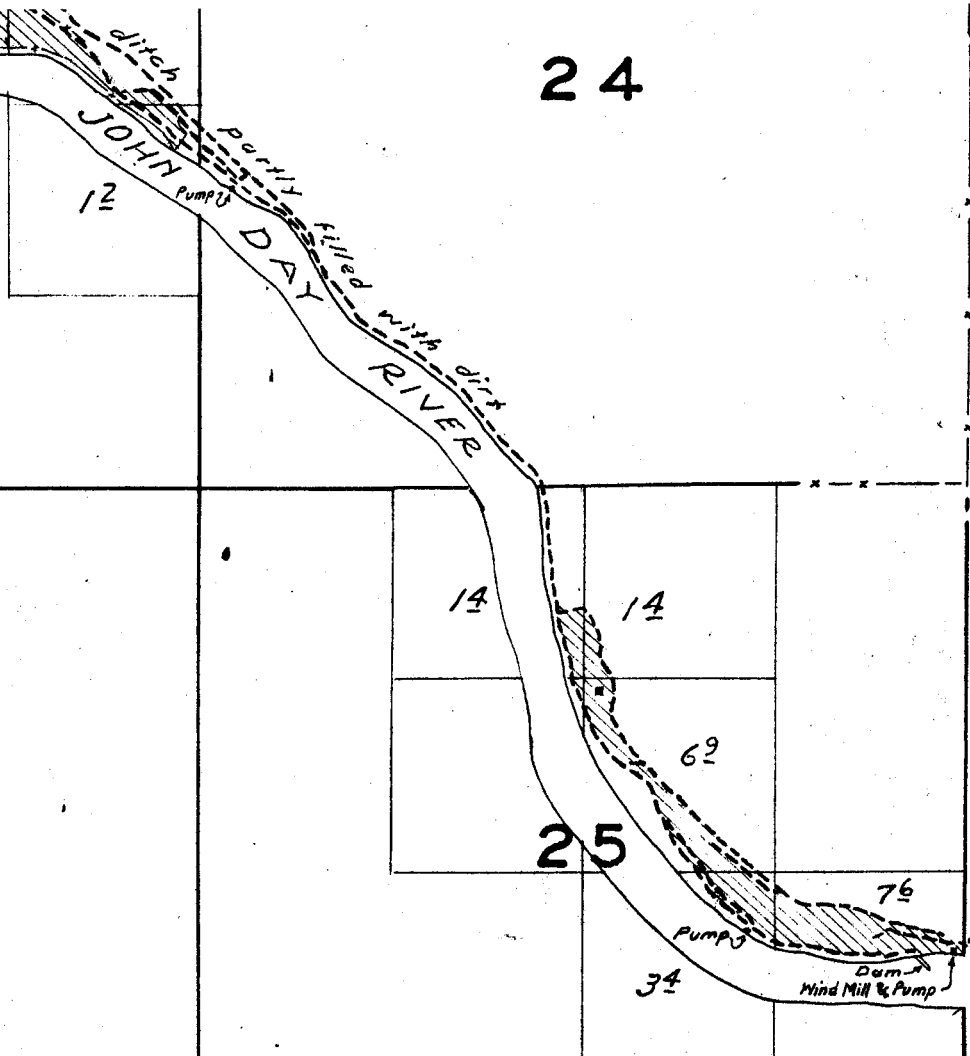
J.N. West

CREEK

23

24

Surveyed May 19, 1925.

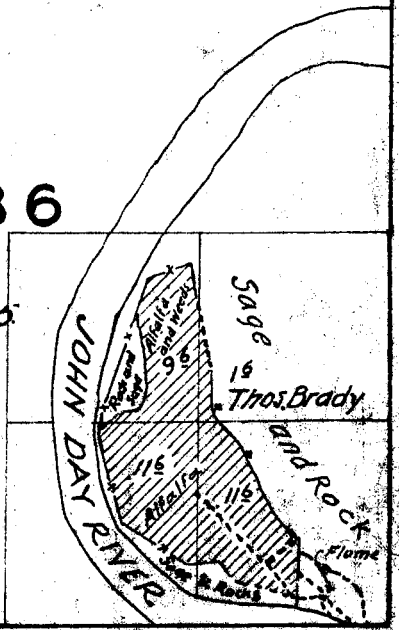


26

35

36

Surveyed May 14, 1925.



OWNSHIP 1 N., RANGE 19 E.

4

3

9

10



6°

M.G.M. Don.

19

20

30

29

31

32

18

17

16

19

20

21

TOWNSHIP

6

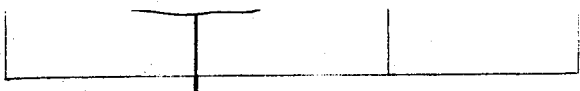
5

4

7

8

9



Surveyed

15

*Note:  
Streams and roads, except in the  
vicinity of irrigated land, are  
sketched in approximate location*

22

16

21



27

34

28

33