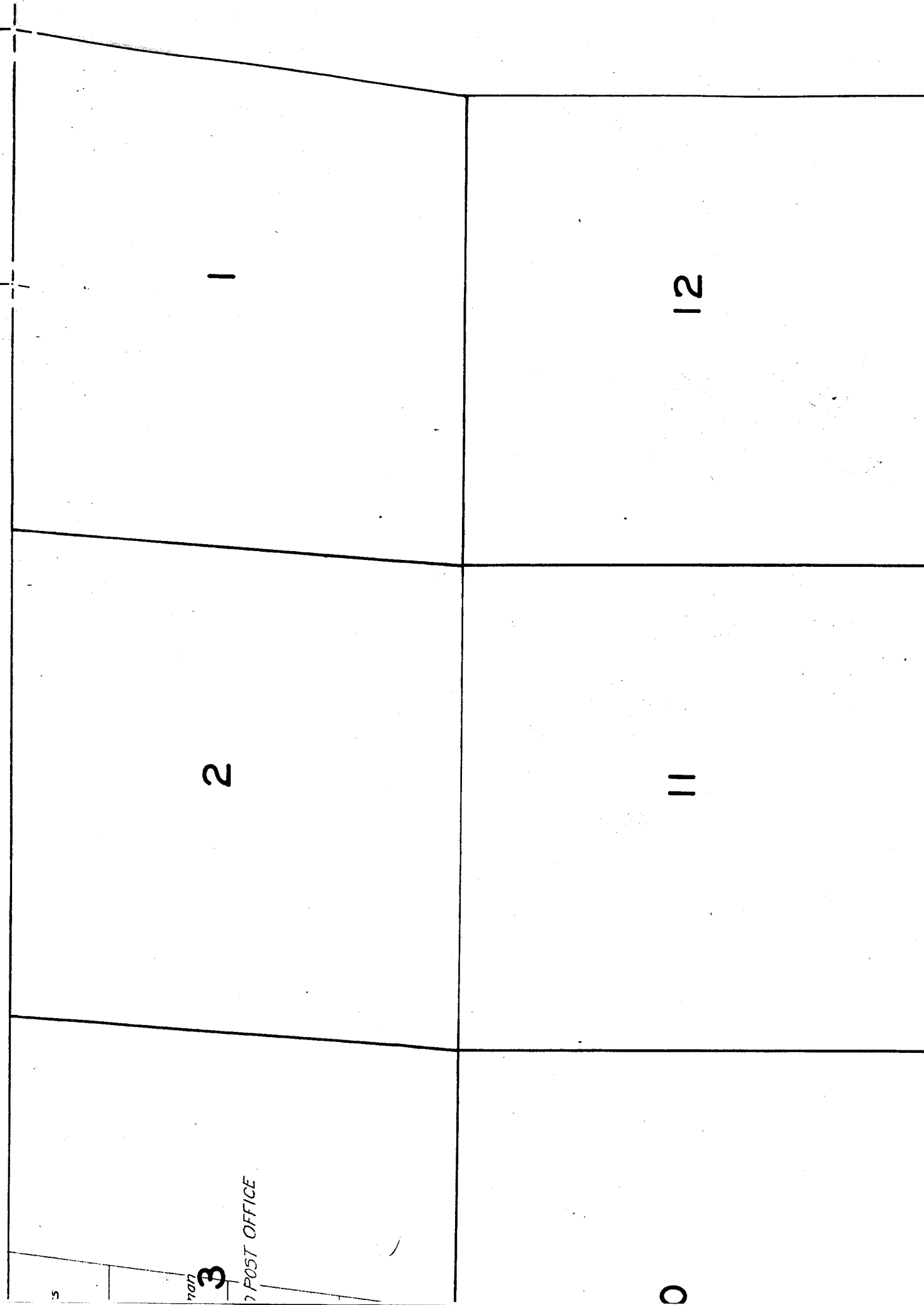


GE 19 E.

42-2-1



15

14

13

16, 17, 18, 19, & 20, 1926.

2

23

24



Sub-irrigated.

F.T. Easter



Rock 0<sub>3</sub>

C.O. Supt)

Loculim sketched from US Plots.

19

20

30

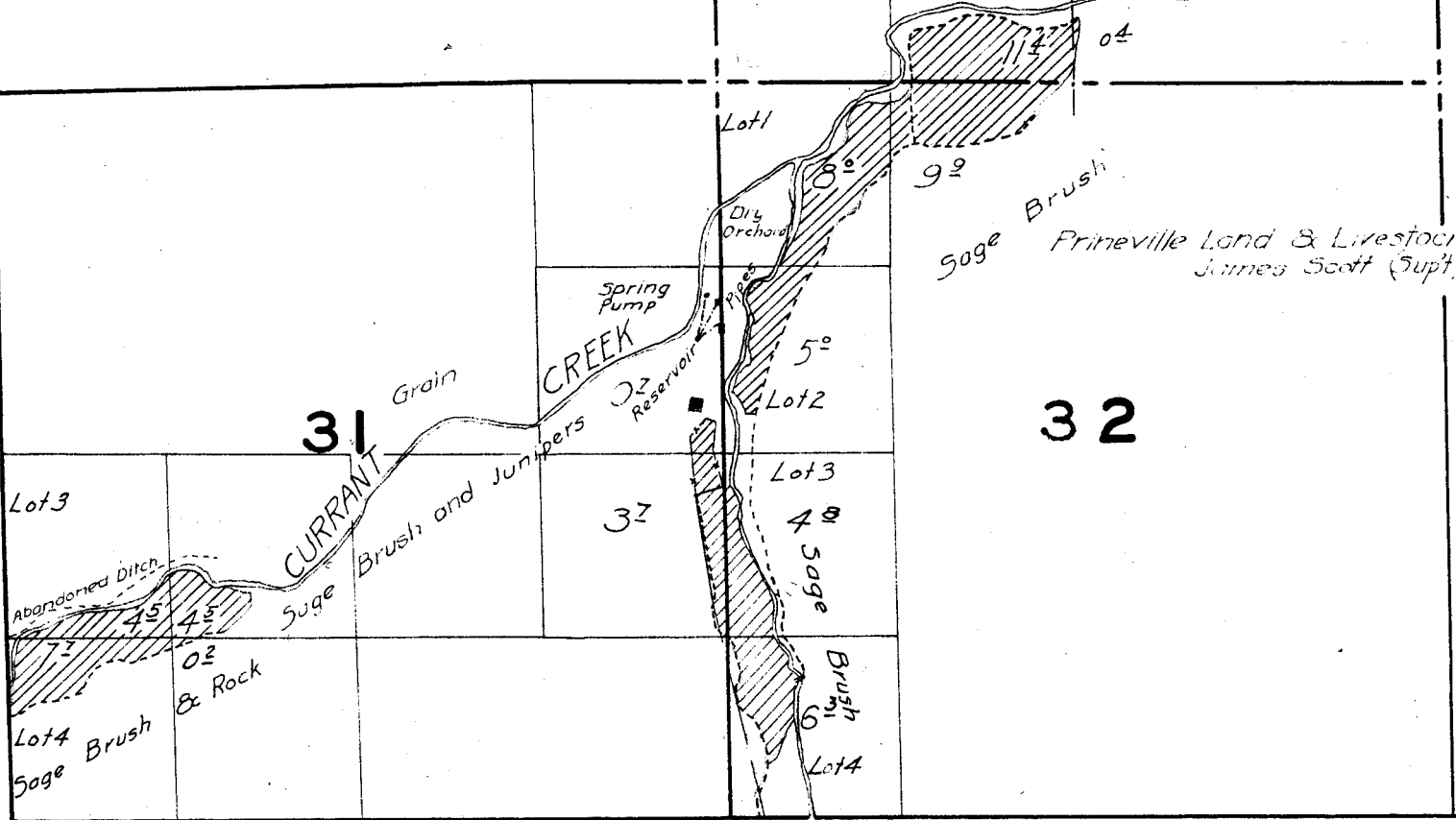
29

Sage Brush  
MUDDY

Sage Brush  
Prineville Land & Livestock  
James Scott (Supt)

31

32



29

28

27

32

33

34

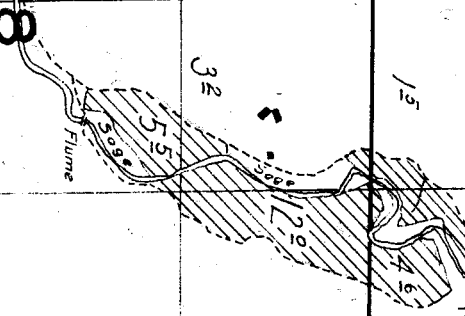
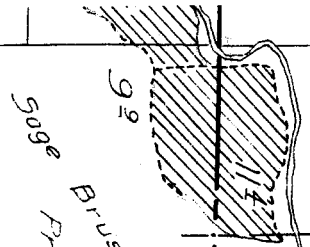
509<sup>e</sup> *Prineville Land & Livestock Co*  
*James Scott (Supt)*

Brush

509<sup>e</sup> *Brush*

and Junipers  
CREEK  
Rim Rock

Flume



Lot 4

0

17

16

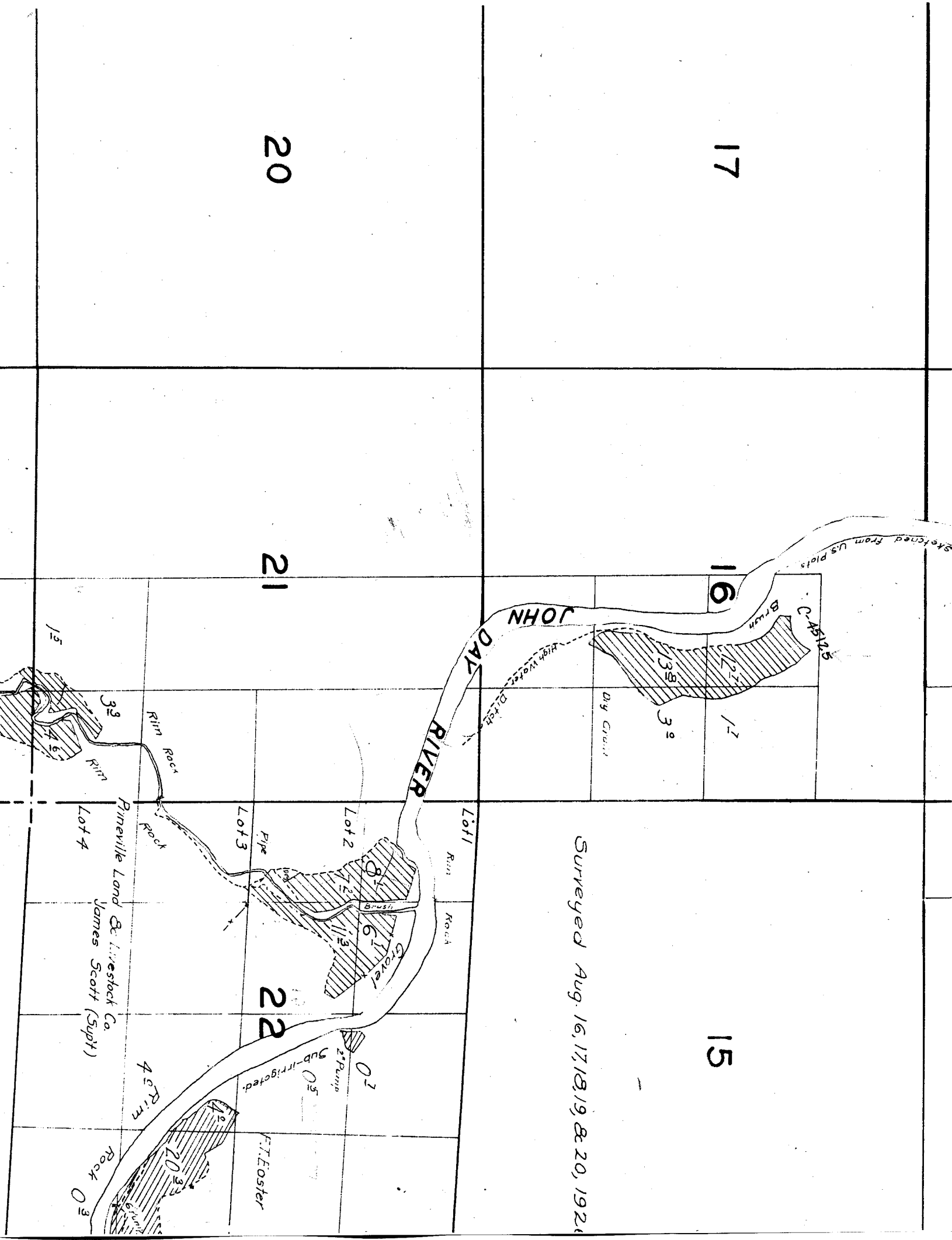
15

20

21

22

Surveyed Aug. 16, 17, 18, 19, & 20, 1921



Sketches from US plots

ST-125-C

Brush

227

32

17

Dig Grass

JOHN DAY RIVER

Ditch

High Water

Lot 1

Rim

Rock

Lot 1

Lot 2

8

6

3

02

Lot 3

Pipe

Brush

Grovel

2 1/2 Pump

03

Lot 4

Rim

Rock

4 1/2 Rim

03

Rim

Rock

32

4 1/2

03

Lot 4

Rimville Land & Livestock Co.

James Scott (Supt)

03

03

03

15

F. Foster

23

24

*Location sketched from U.S. Plats.*

C.S. Hicks  
Sub-irrigated  
Farm Land

26

Rim Rock

4°

Brush  
Sage

25

0°

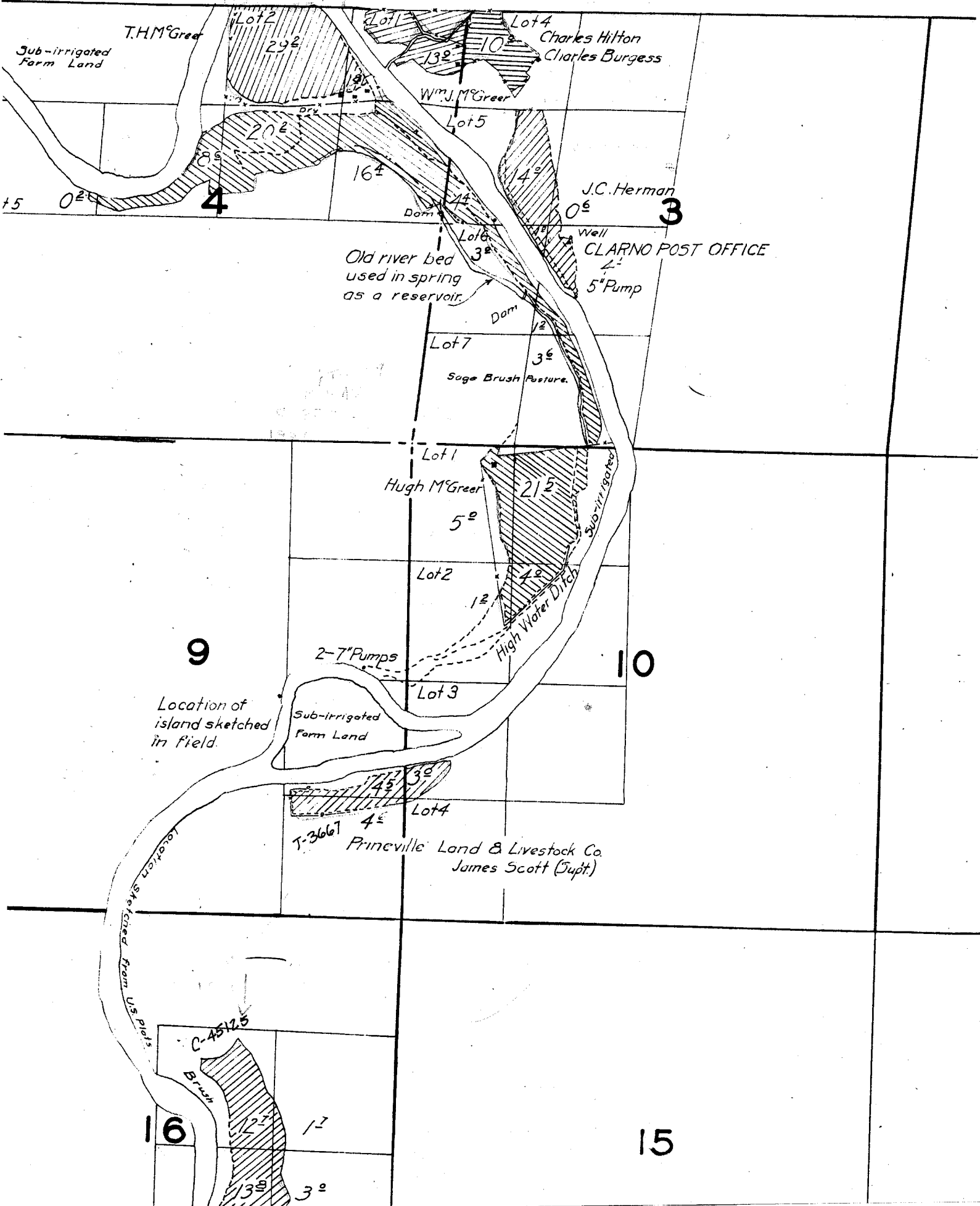
6' Pump

35

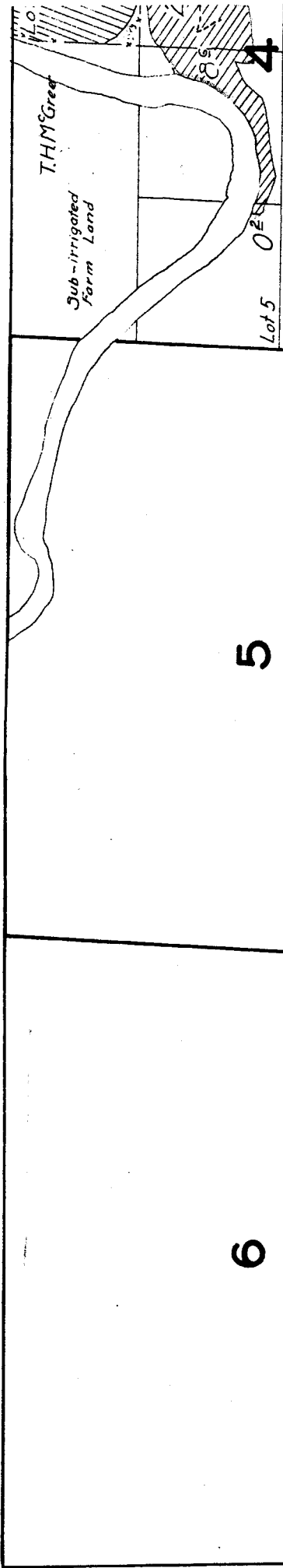
36

*Location sketched from U.S. Plats.*

# TOWNSHIP 8 S. RANGE 19 E.



# TOWNS



5

8

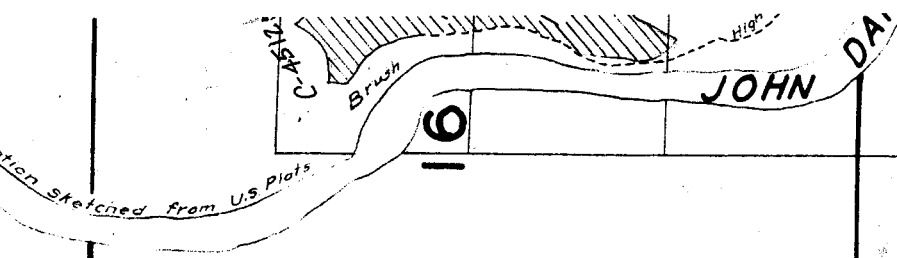
6

7

9

Location





16

21

17

20

18

19