

2

1

11

12

14

13

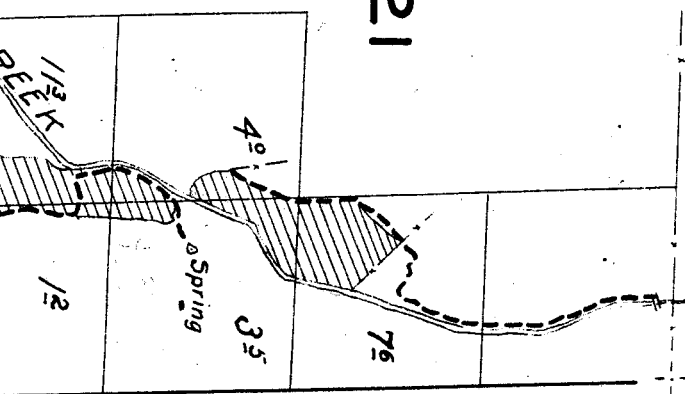
16

15

21

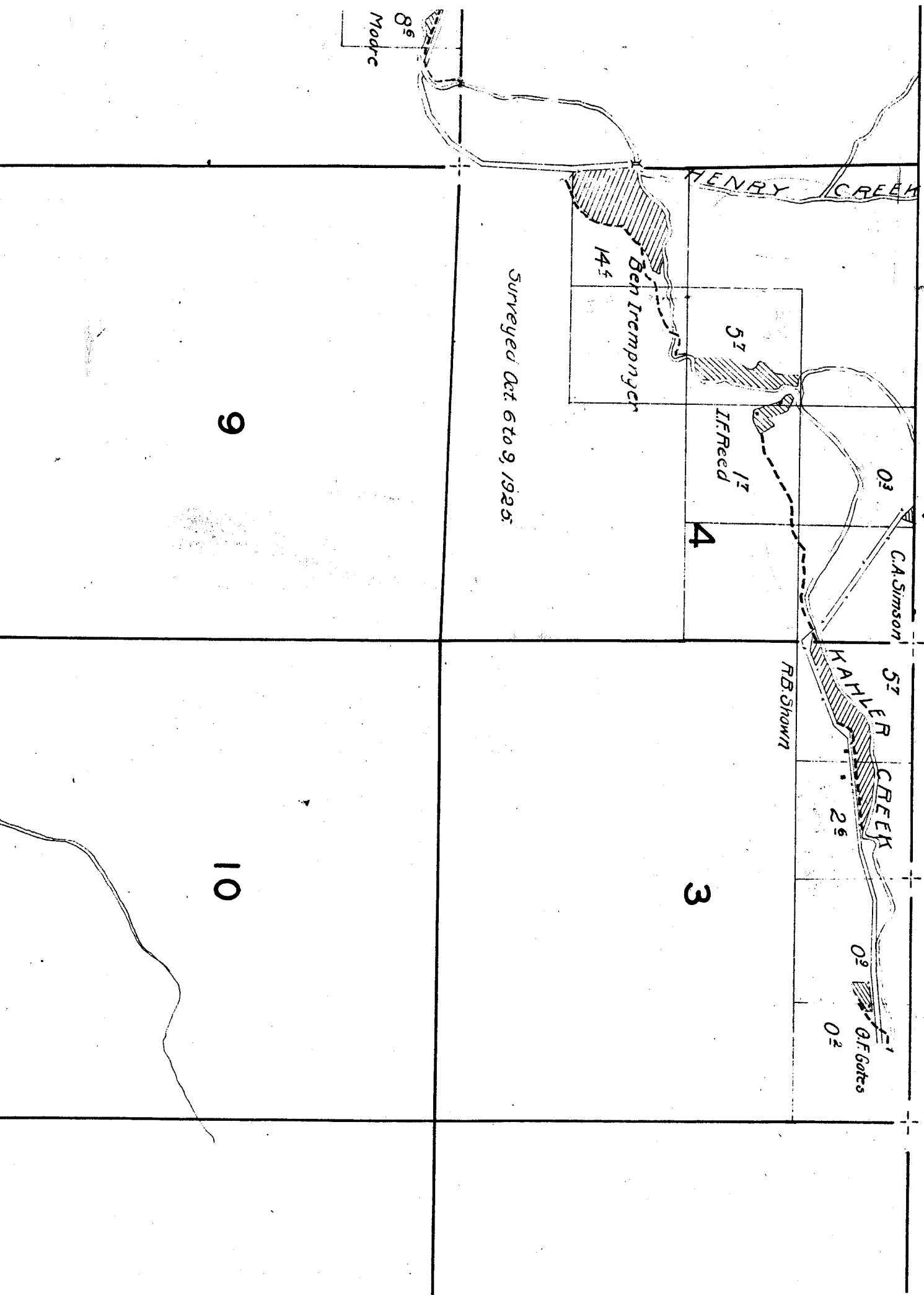
22

xs, except
nd, is
ation.



L.H. Donahon

TOWNSHIP 8 S., RANGE 25 E.



Surveyed Oct 6 to 9, 1925.

9

10

3

4

8 S.
Modrc

HENRY CREEK

KAHLER CREEK

Ben Trempner

I.F. Reed

C.A. Simson

R.B. Showin

G.F. Gates

145

57

17

03

57

26

02

02

21

22

4°

7°

3°

Spring

L.H. Donovan

113°
CREEK

12

HAYSTACK

Bob Wright

175

4°

J.F. Asher

28

27

Spring

172

Surveyed Sept. 19 to 23, 1926

Steiner

5°

C.W. Walls

16

A.E. Cress

12

33

34

13°

40°

Now C-35285

27°

12°

21°

02

33

Pump

Rt. Jenkins

Vr

Surveyed Sept 29, 1985

Balm Cr

27

26

25

34

35

36

15

14

13

22

23

24

02

69

INVEST
CREEK



RII Curves

17

05



30

29

28

31

32

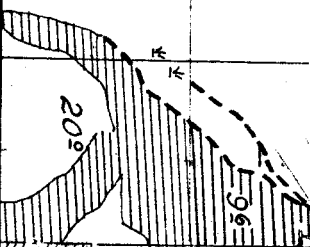
33

Surveyed Sept. 29, 1925.

Surveyed SE

First National Bank
London
O.S.

34



Carl Wagner

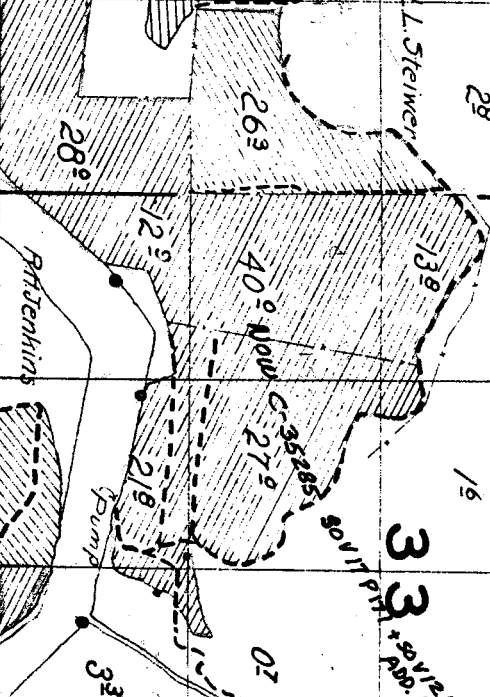
L. Steiwer

L.L. Steiwer

J. Fisher

HAYSTACK

Bob Arig 5+

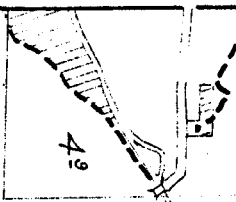


C.W. Walls

Spring

pump

Surveyed



A.S. Borges

18

17

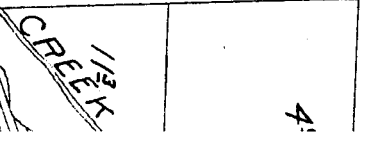
16

19

20

21

Note: Location of streams and roads, except in the vicinity of irrigated land, is sketched in approximate location.



6

5

7

13

03

8

page 8^e

E. R. Moore

07

4^e

A. S. Borges

18

17

