

13

24

14

23

15

22

1/2

53

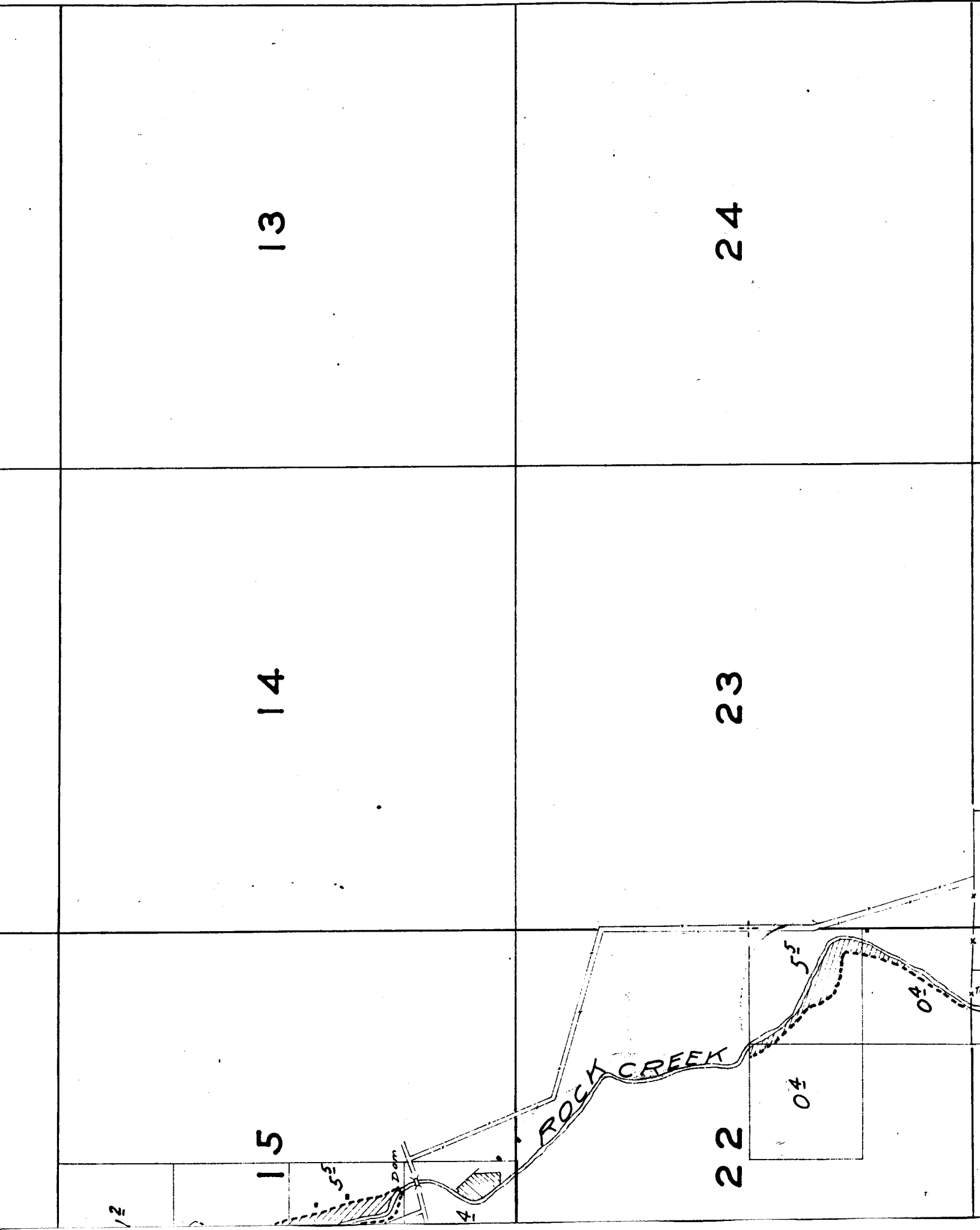
Dam

4

ROCK CREEK

04

40



25

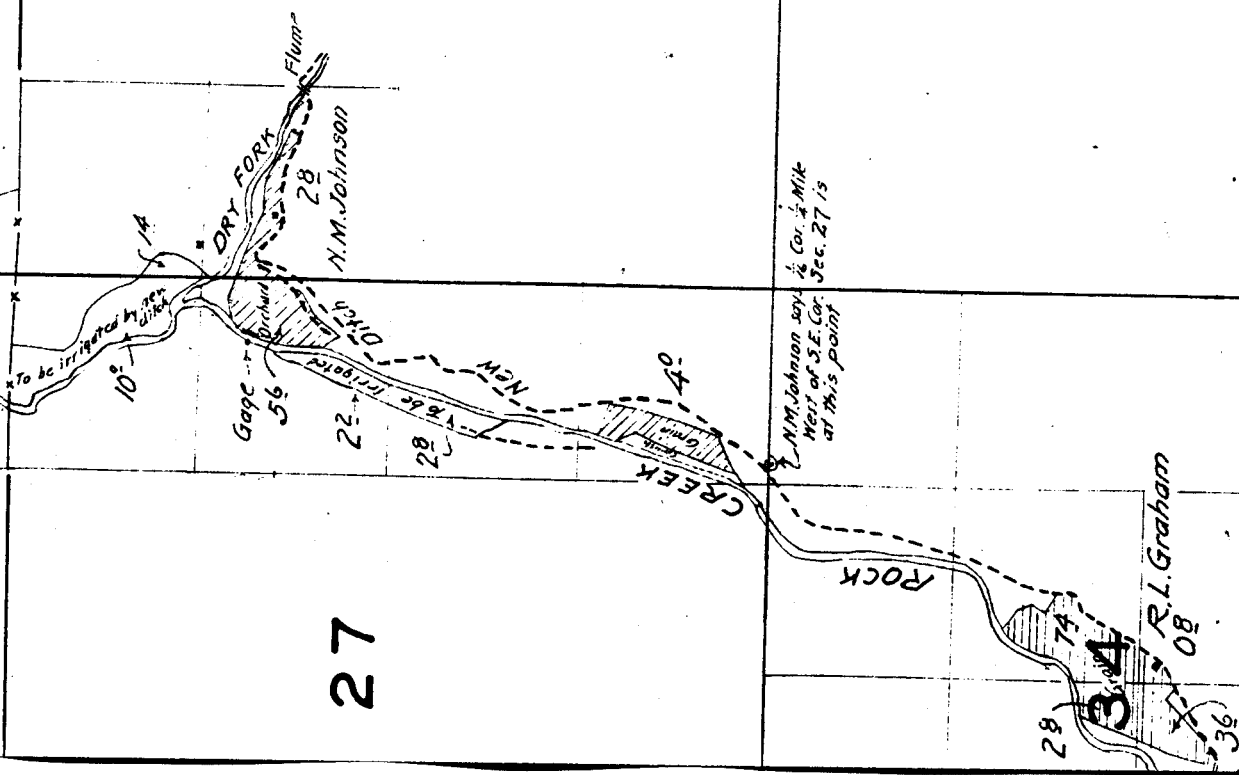
36

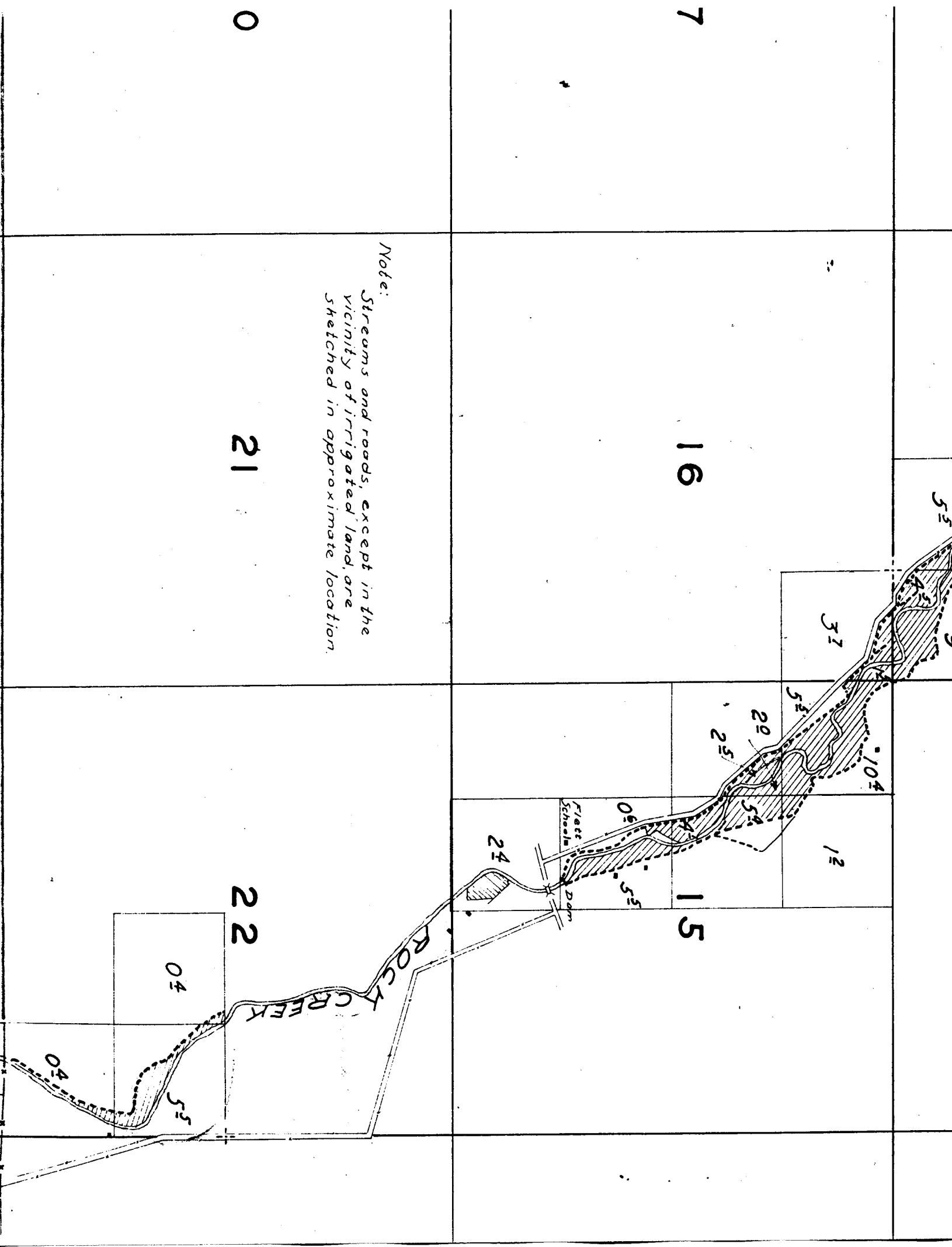
26

35

27

34





*Note:
Streams and roads, except in the
vicinity of irrigated land, are
sketched in approximate location.*

7

16

15

0

21

22

04

04

55

31

12

20

25

24

104

55

55

55

55

55

55

55

55

55

55

55

55

06

55

55

55

55

55

55

55

55

*

.

.

.

.

.

.

.

.

.

.

.

.

.

.

.

.

.

.

.

.

.

.

.

.

.

.

.

.

.

.

.

.

.

.

.

.

.

.

.

.

.

.

.

55

55

55

55

55

55

55

55

55

55

55

55

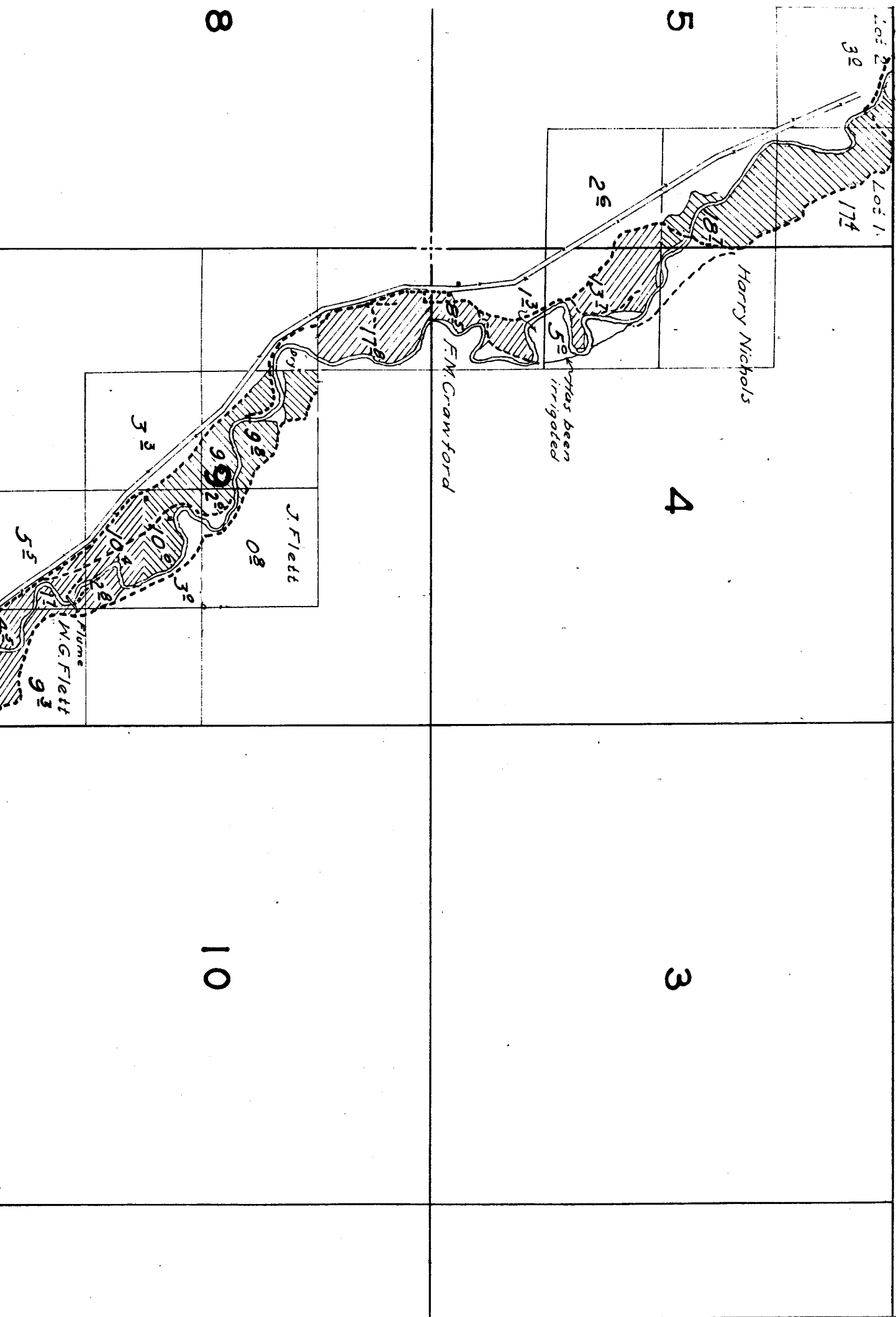
55

55

55

55

TOWNSHIP 2 S. RANGE 22 E.



21

22

04

55

04

10°

Gage 56

22

28

28

27

Surveyed May 5 to May 9, 1925.

ROCK CREEK

N.M. Johnson so,
West of S.E. Co
at this point

33

28

74

34

R.L. Graham

08

Grain 18

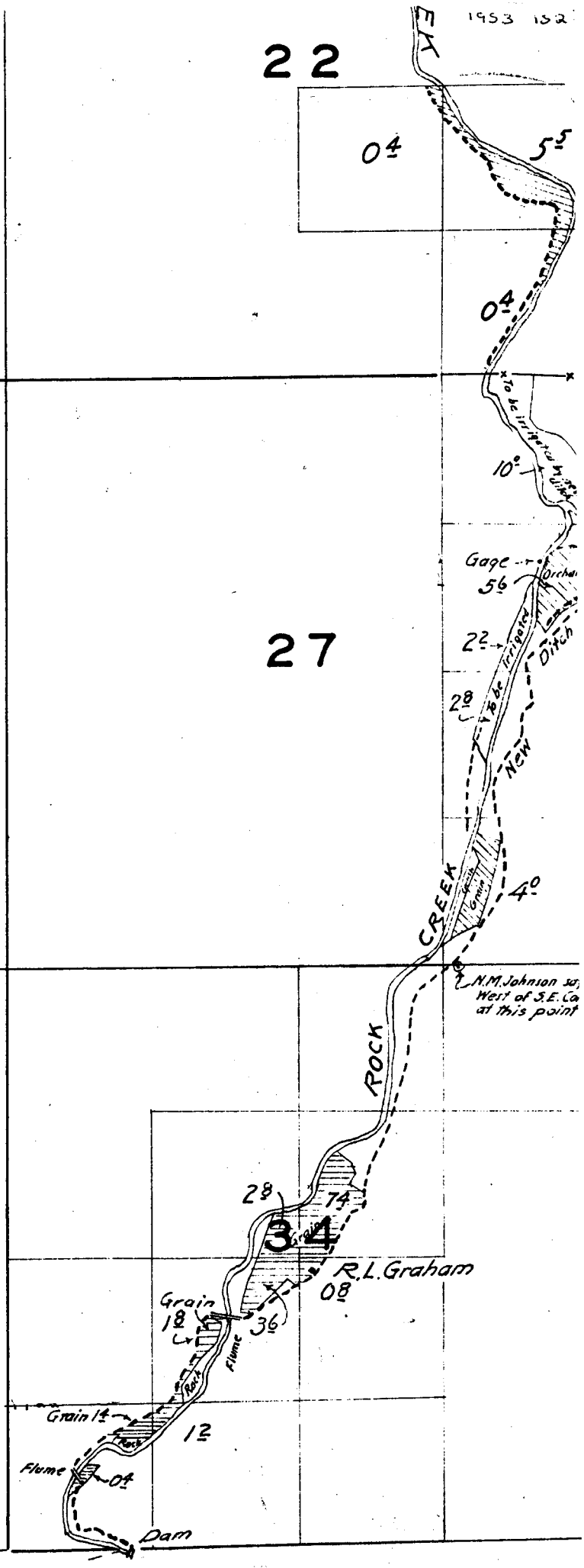
Flume 36

Grain 12

12

Flume 04

Dam



18

17

16

19

20

21

*Note: Streams and roads, ex-
vicinity of irrigated,
sketched in approxim*

30

29

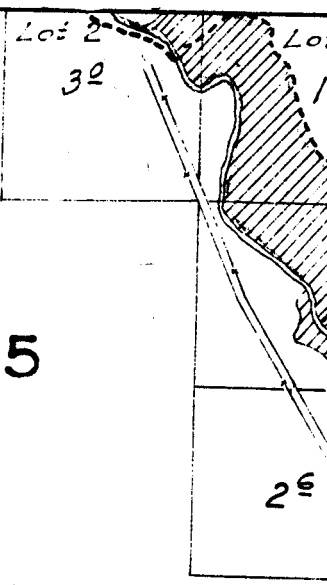
28

Surveyed May 5 to May.

31

32

33



6

5

7

8

18

17

2

1

11

12

14

13