

2

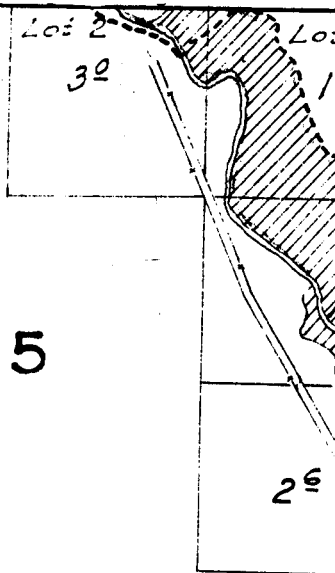
1

11

12

14

13



6

5

7

8

18

17

31	32	33
30	29	28 <i>Surveyed May 5 to May</i>

18

17

16

19

20

21

*Note:
Streams and roads, ex
vicinity of irrigated
sketched in approxim*

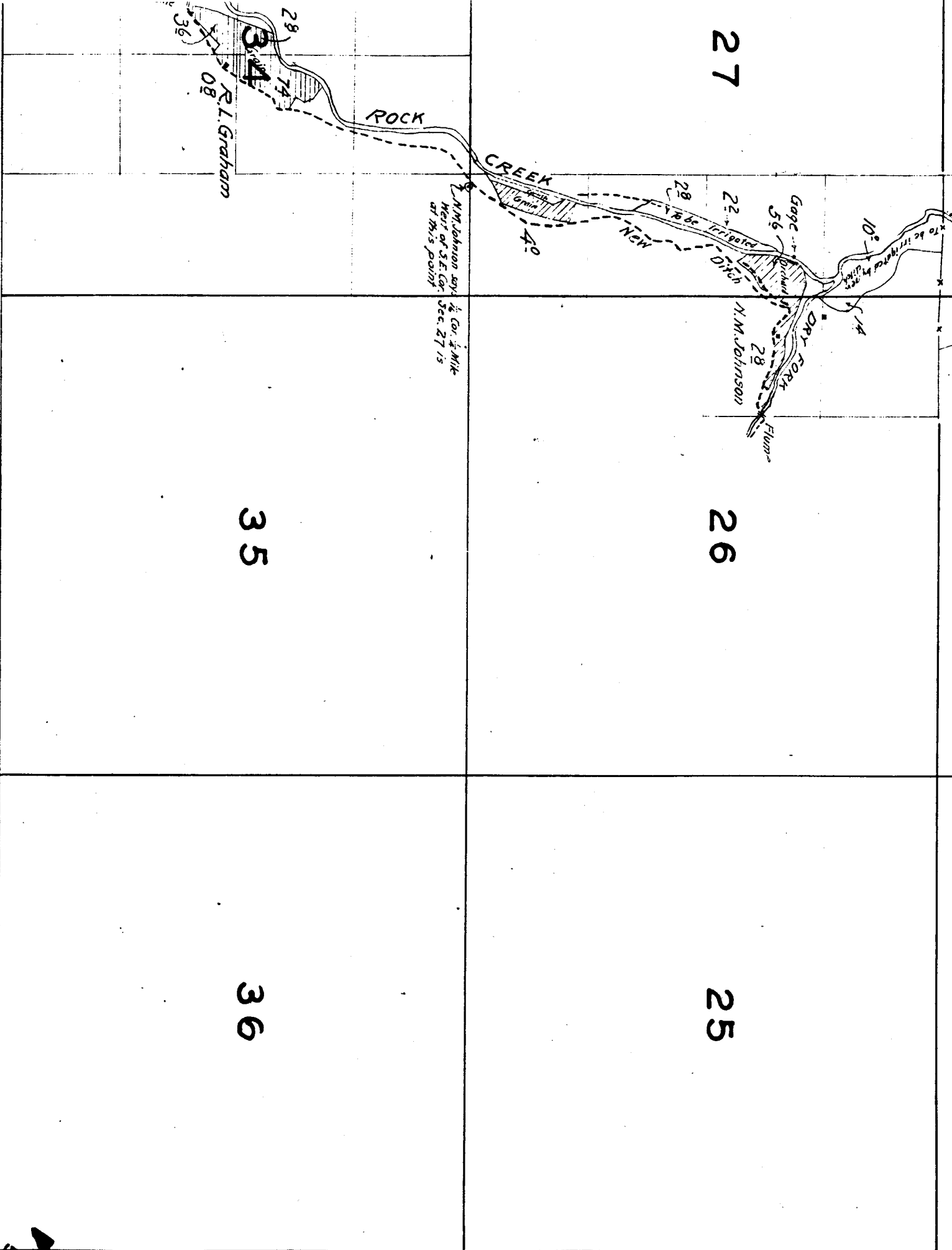
27

26

25

35

36



N.M. Johnson says
 1/2 Cor. 1/2 Mile
 West of S.E. Cor.
 Sec. 27 is
 at this point

R.L. Graham

N.M. Johnson

12

15

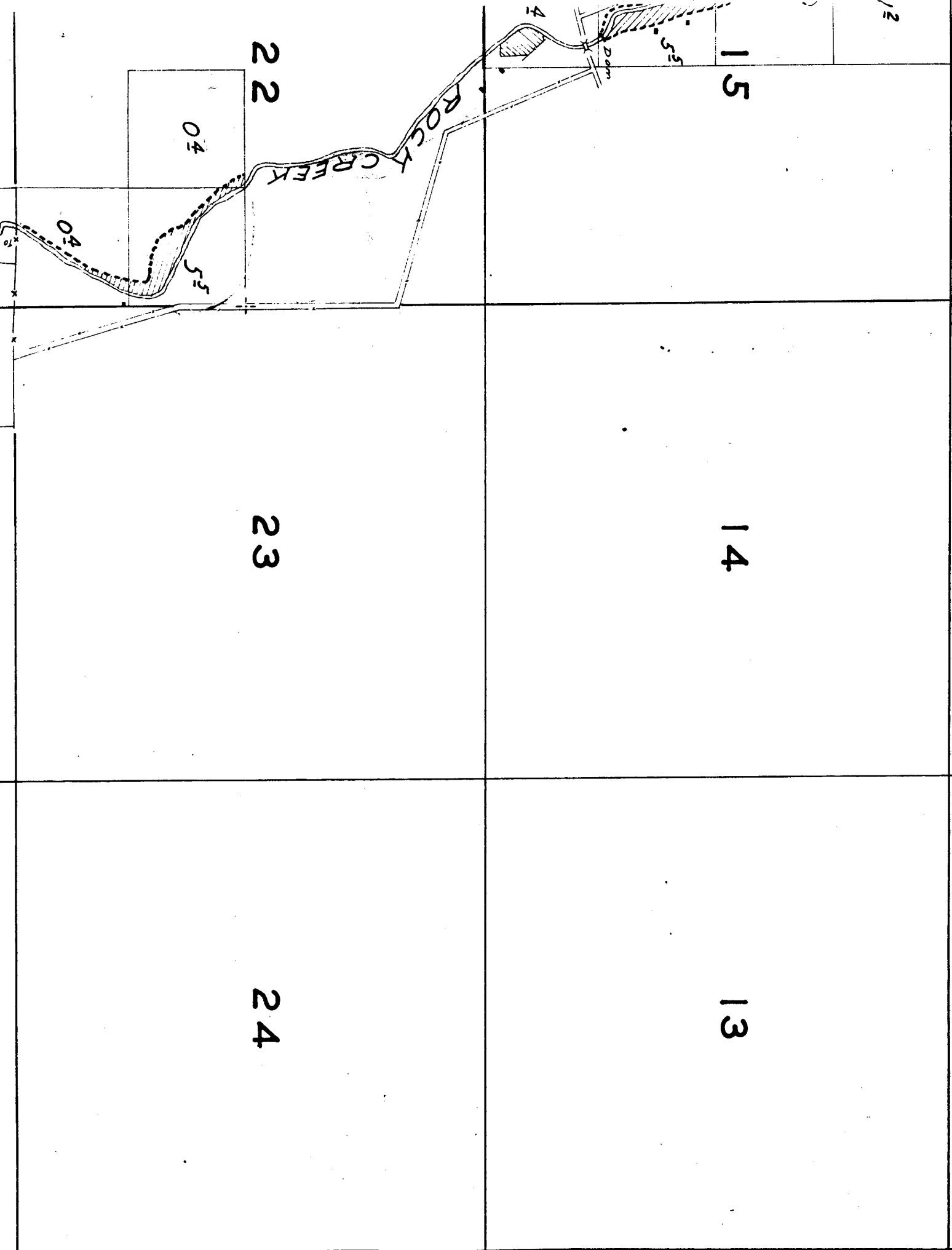
14

13

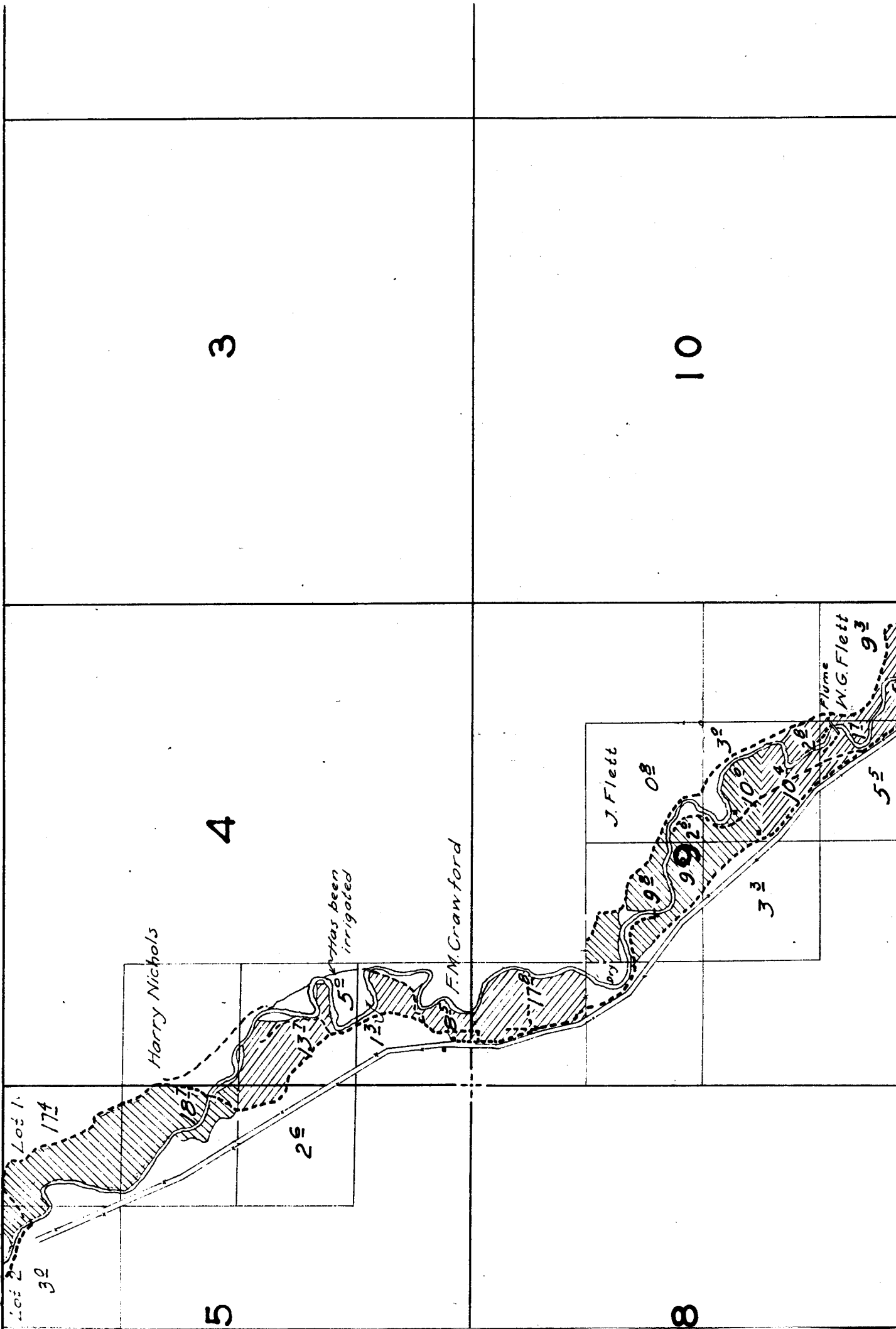
22

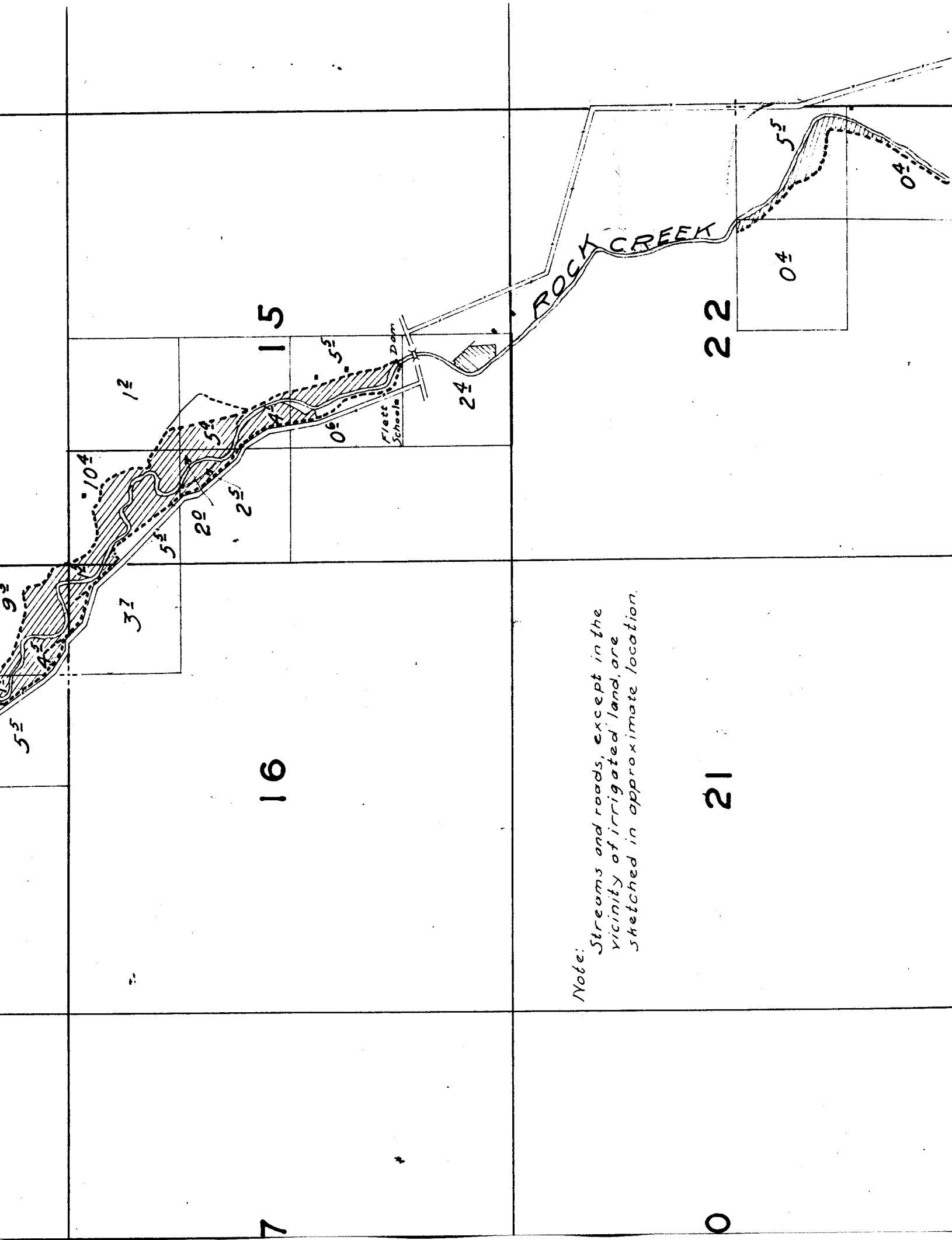
23

24

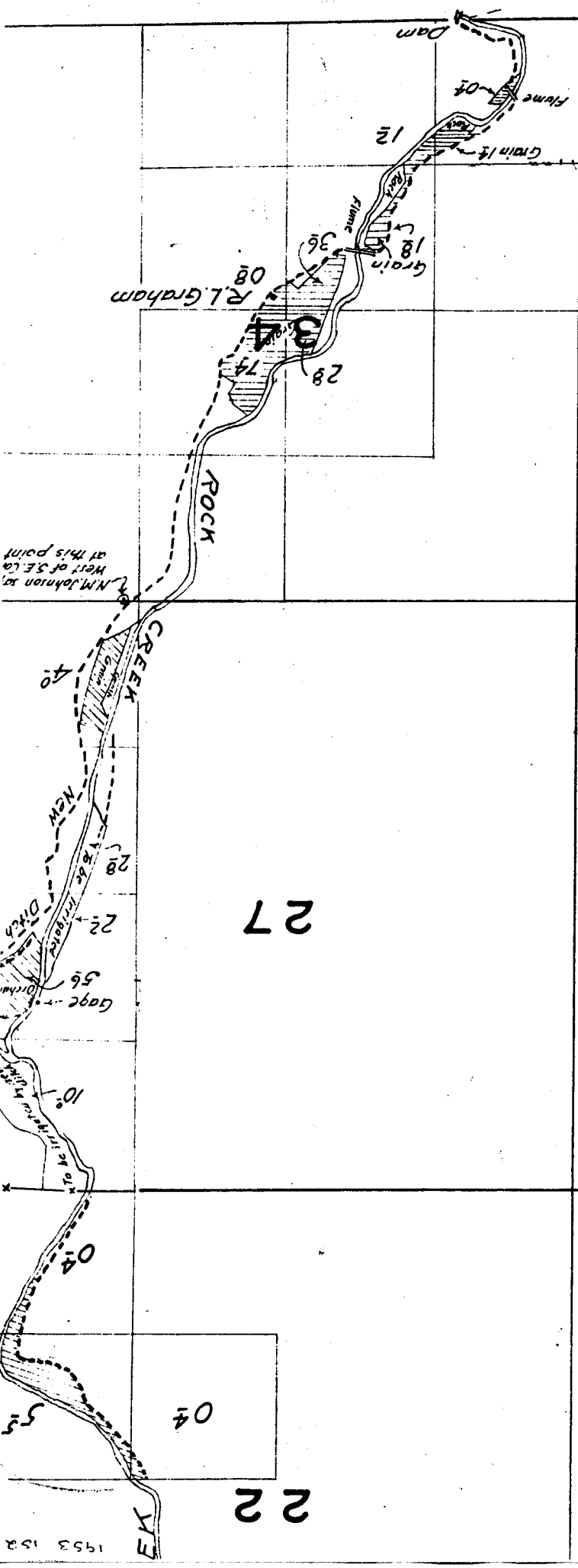


TOWNSHIP 2 S., RANGE 22 E.





Note: Streams and roads, except in the vicinity of irrigated land, are sketched in approximate location.



Surveyed May 5 to May 9, 1925.

33

28

21

27

22

04