

18

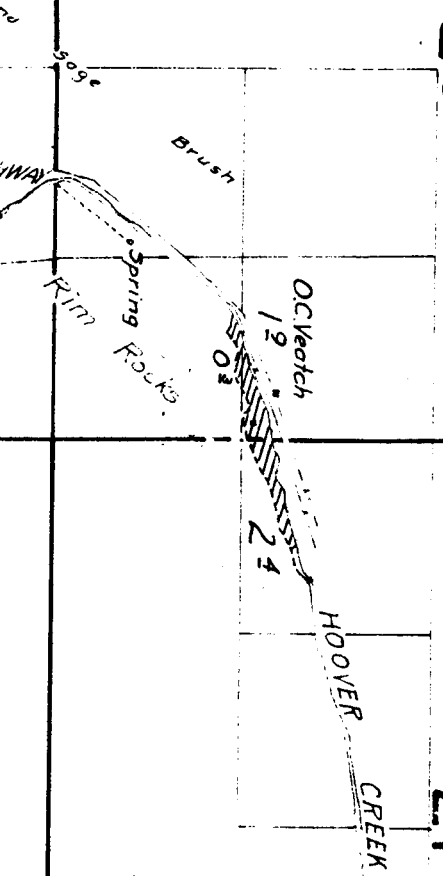
17

16

19

20

21



30

29

28

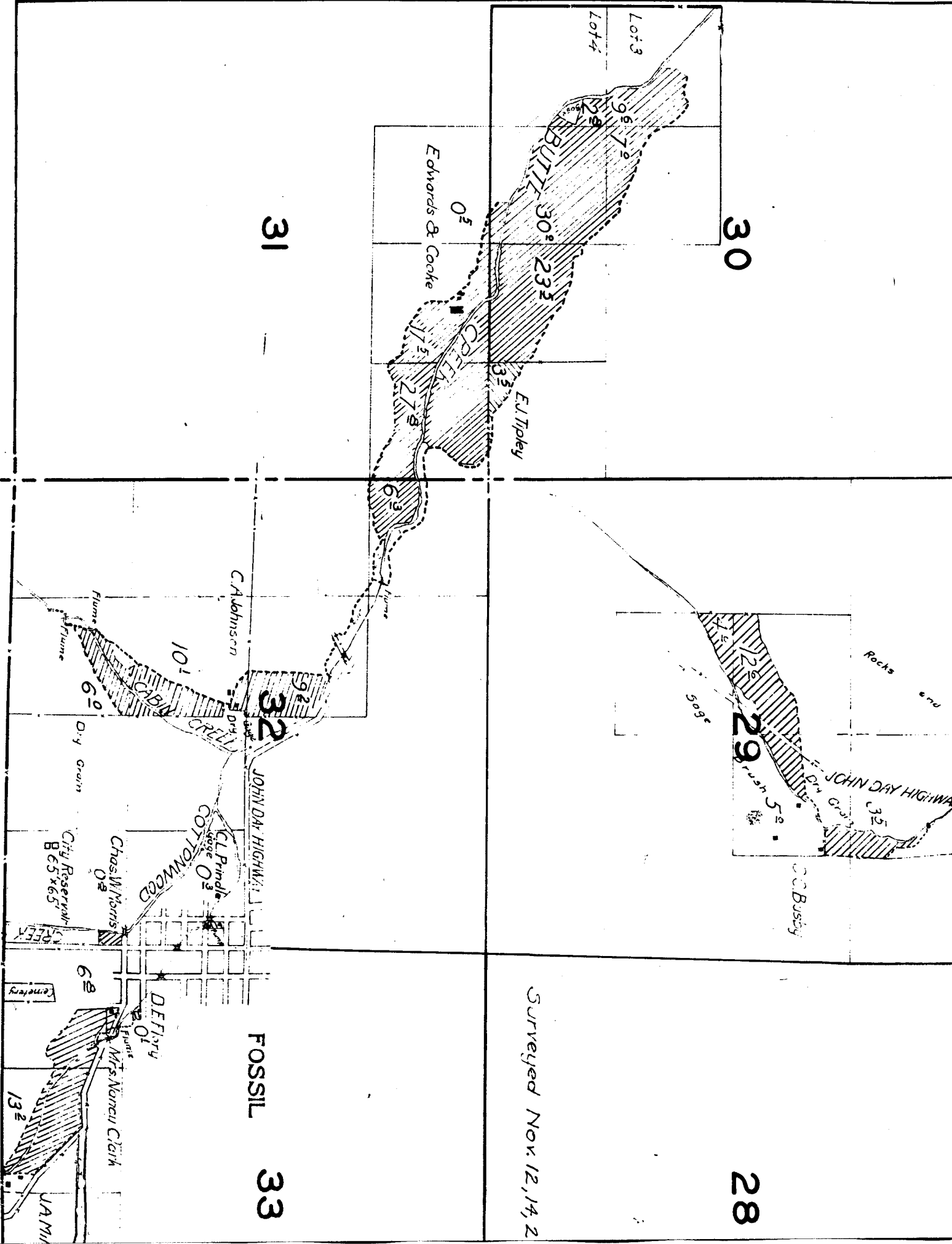
Surveyed Nov. 12, 14, 2

31

32

FOSSIL

33



2

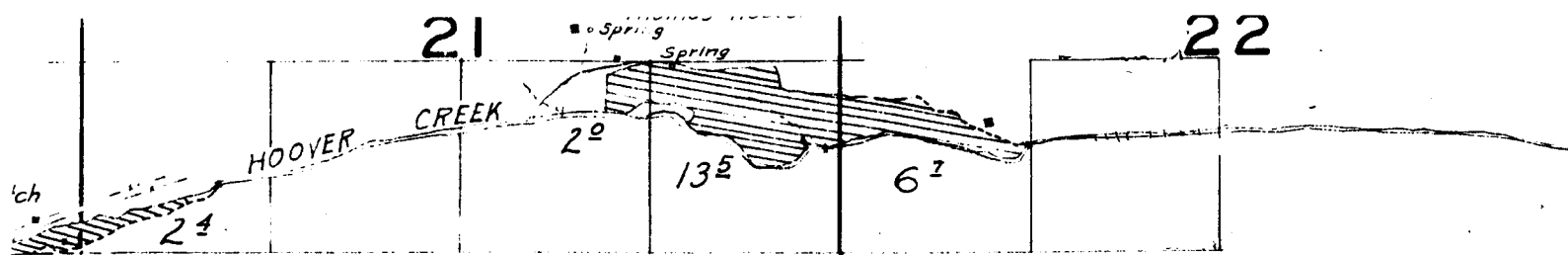
1

11

12

14

13



NOTE: Streams sketched in approximate location except in the vicinity of irrigated land.

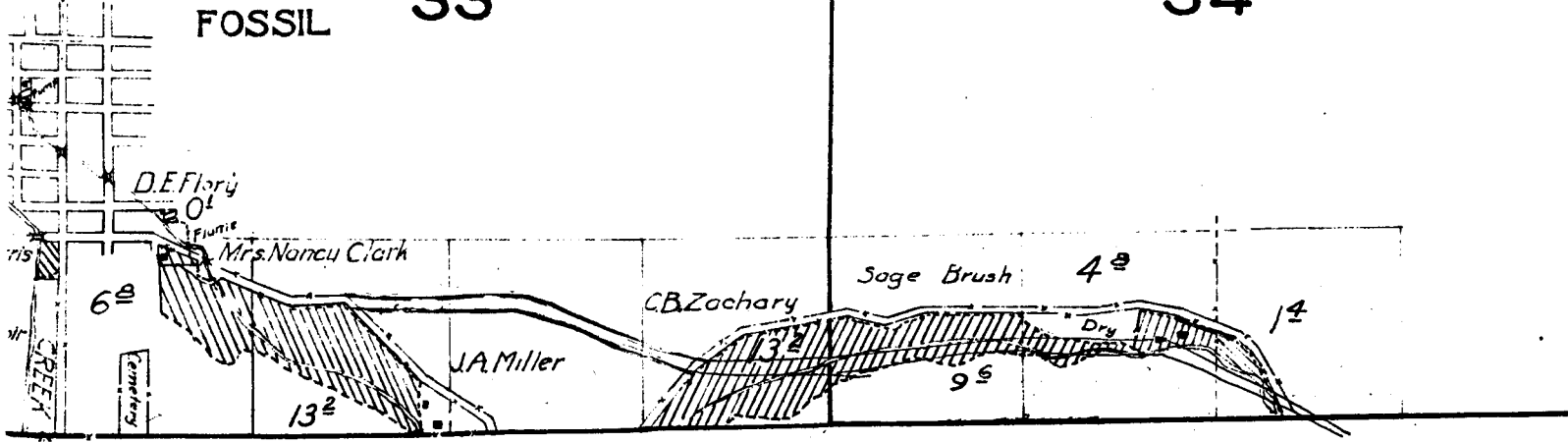
28

27

Surveyed Nov. 12, 14, 20, & 21, 1925.

FOSSIL 33

34

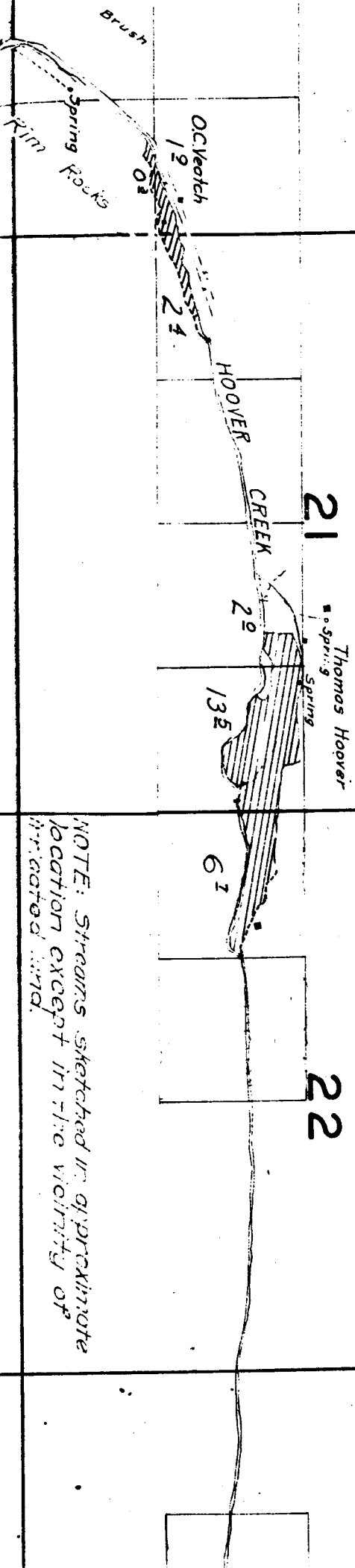


16

15

21

22



NOTE: Streams sketched in approximate location except in the vicinity of irrigated land.

TOWNSHIP 6 S. RANGE 21 E.

4

3

9

10

6

5

7

8

18

17

13

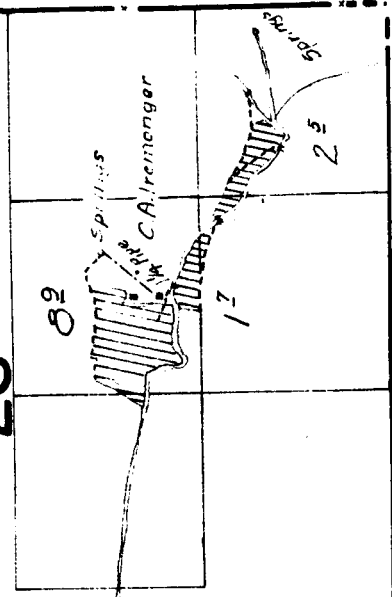
14

15

24

23

22



sketched in approximate
of in the vicinity of

27

26

25

34

35

36

