

2

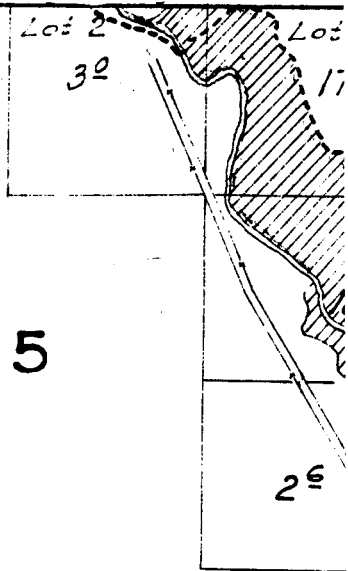
1

11

12

14

13



6

5

7

8

18

17

18

17

16

19

20

21

Note: Streams and roads, ex:  
vicinity of irrigated,  
sketched in approxim

30

29

28

*Surveyed May 5 to May.*

31

32

33

21

22

1953 152

04

55

04

To the Western Mill

10°

Gage 56

22

28

186

NEW

40

ROCK CREEK

N.M. Johnson is West of S.E. Co at this point

28

27

Surveyed May 5 to May 9, 1925.

33

28

74

34

R.L. Graham 08

Grain 18

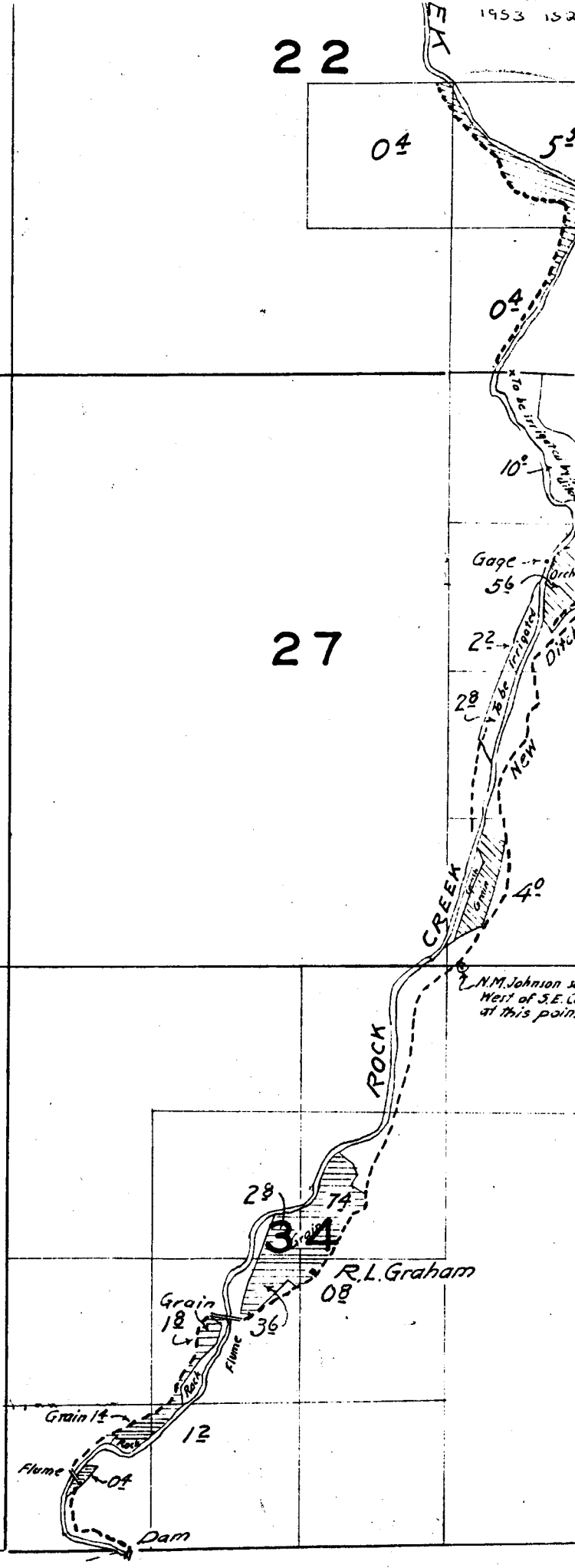
Flume 36

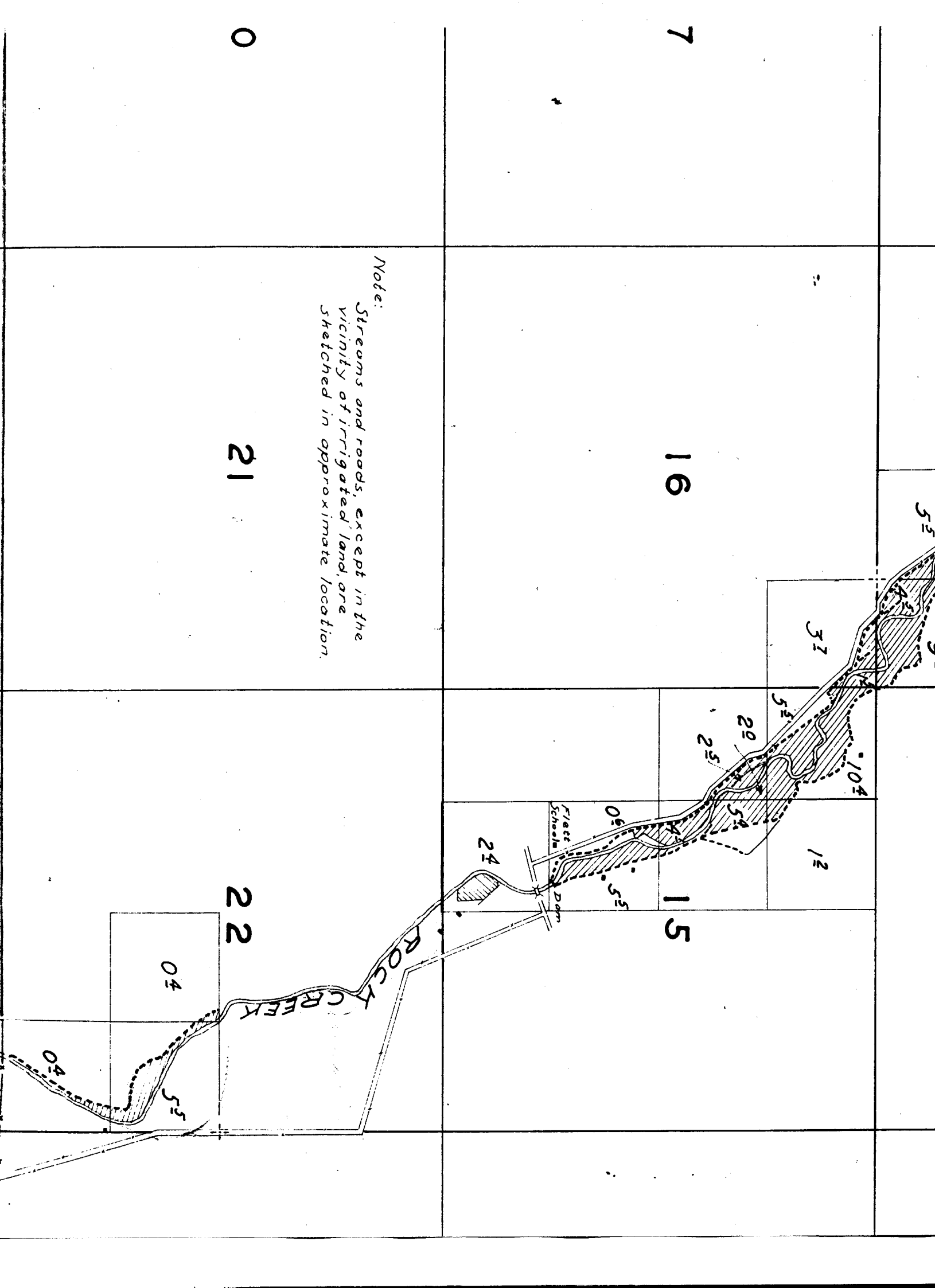
Grain 12

12

Flume 04

Dam





Note:  
Streams and roads, except in the vicinity of irrigated land, are sketched in approximate location.

7

16

15

0

21

22

ROCK CREEK

Tract  
School  
Dam

37

12

04

04

104

20

25

24

05

53

53

52

54

53

53

53

53

53

53

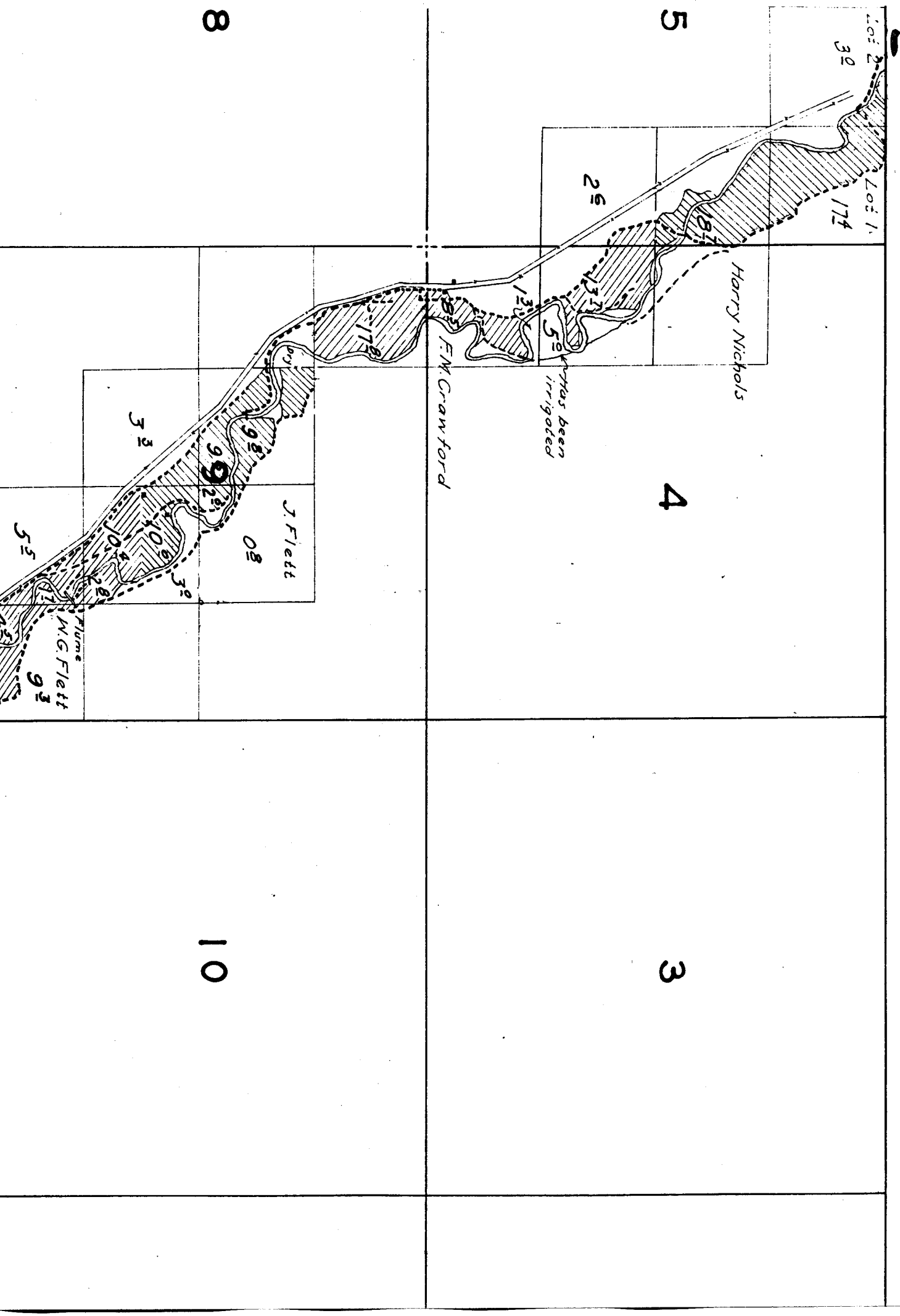
53

53

53

53

# TOWNSHIP 2 S. RANGE 22 E.



12

15

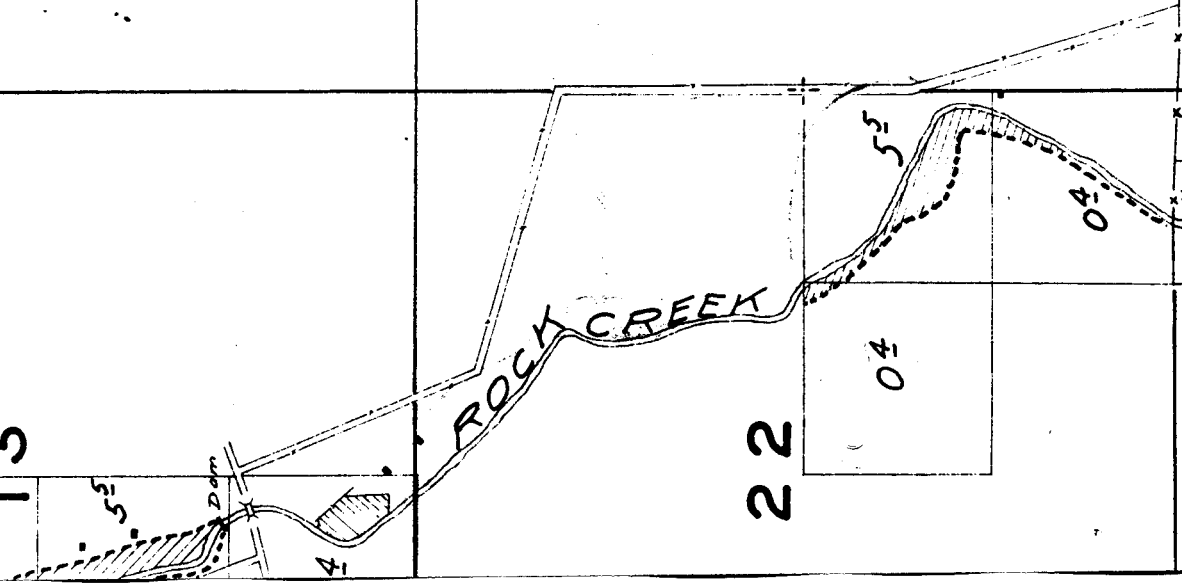
14

13

22

23

24





25

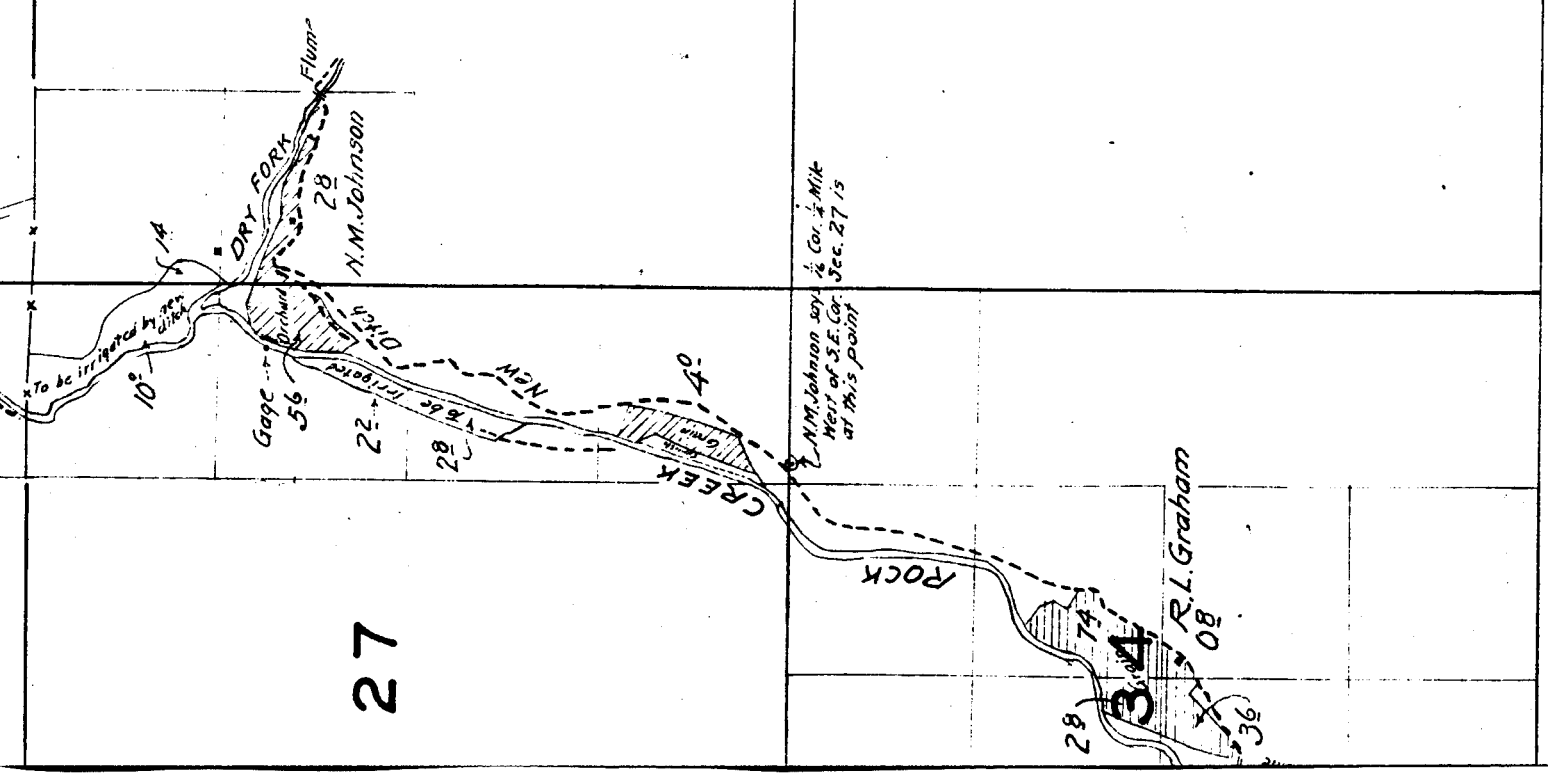
36

26

35

27

34



21

22

28

27

*Surveyed May 2, 3, and 4, 1925.*

33

34

	13	24
	14	23
	15	22

27

26

25

34

35

36

18

16

15

20

21

22

TOWNSHIP 1 S., RANGE 22 E.

5

4

3

8

9

10

2

1

11

12

14

13

6

5

7

8

18

18



16

18

18

21

20

19

