

16

21

17

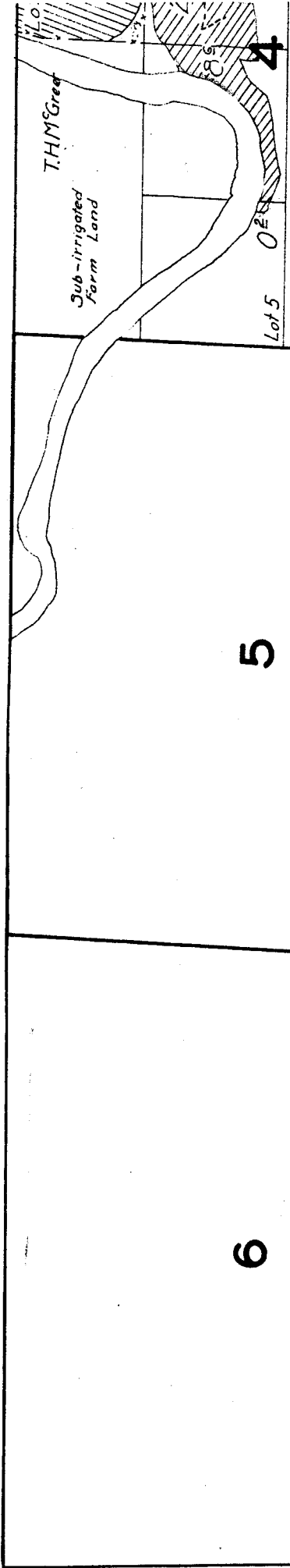
20

18

19

lot

TOWNS



5

8

6

7

9

Location of island skeletal in field

Location

15

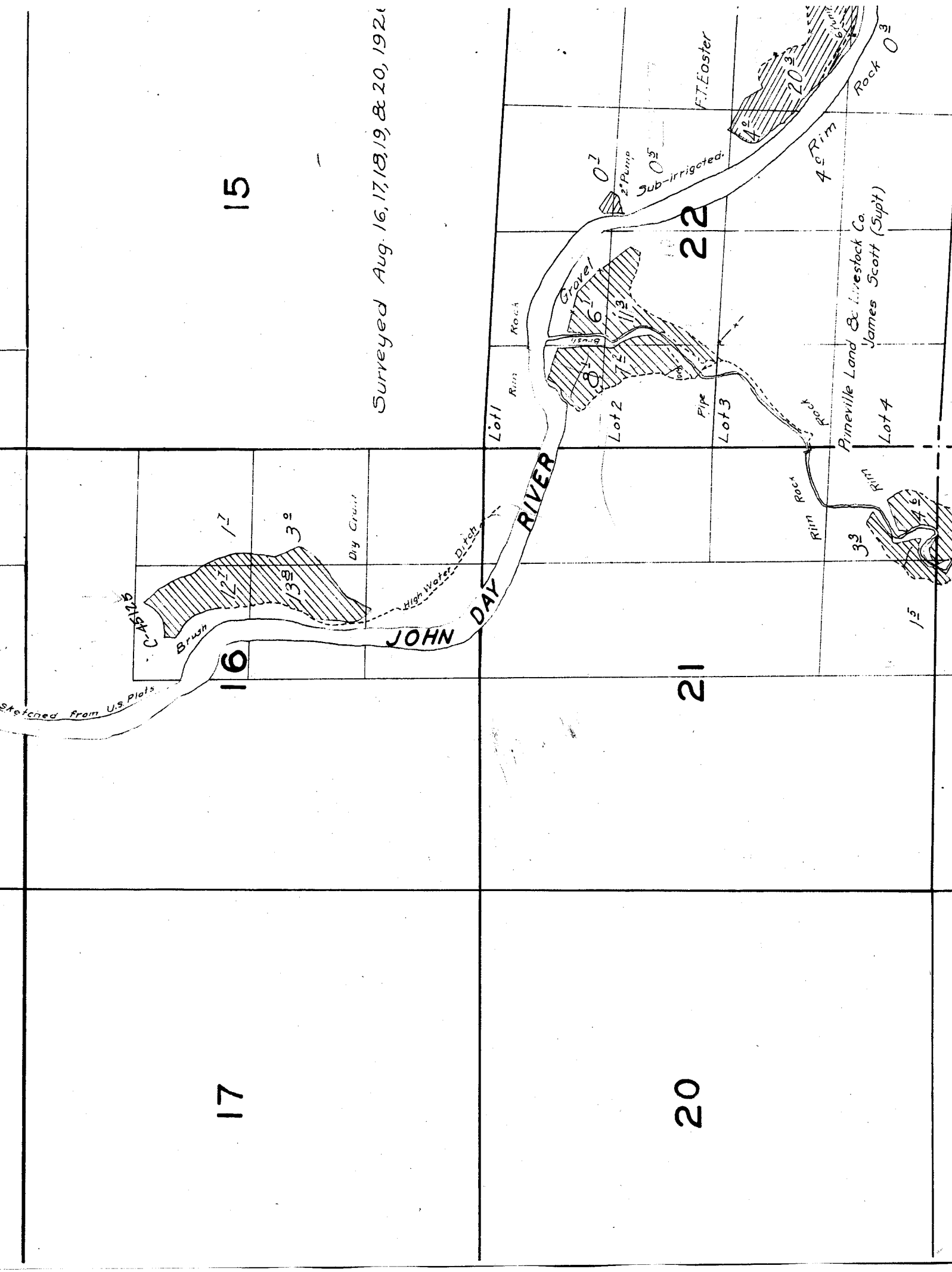
Surveyed Aug. 16, 17, 18, 19, & 20, 1921

17

20

21

22



sketched from U.S. plots

C-45125

Brush

12

13

Dy Crail

High Water Ditch

JOHN DAY RIVER

Lot 1

Run

Rock

Grove

Lot 2

Lot 3

Pipe

Rock

Rock

Rim

Rock

Rim

Pineville Land & Livestock Co.
James Scott (Supt)

Lot 4

15

0 1

2nd Pump

Sub-irrigated

F.T. Easter

20

4th Rim

Rock 0 3

29

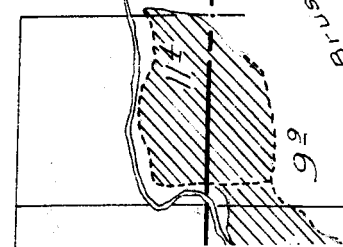
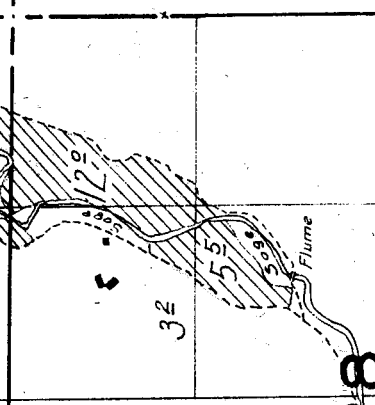
28

27

32

33

34

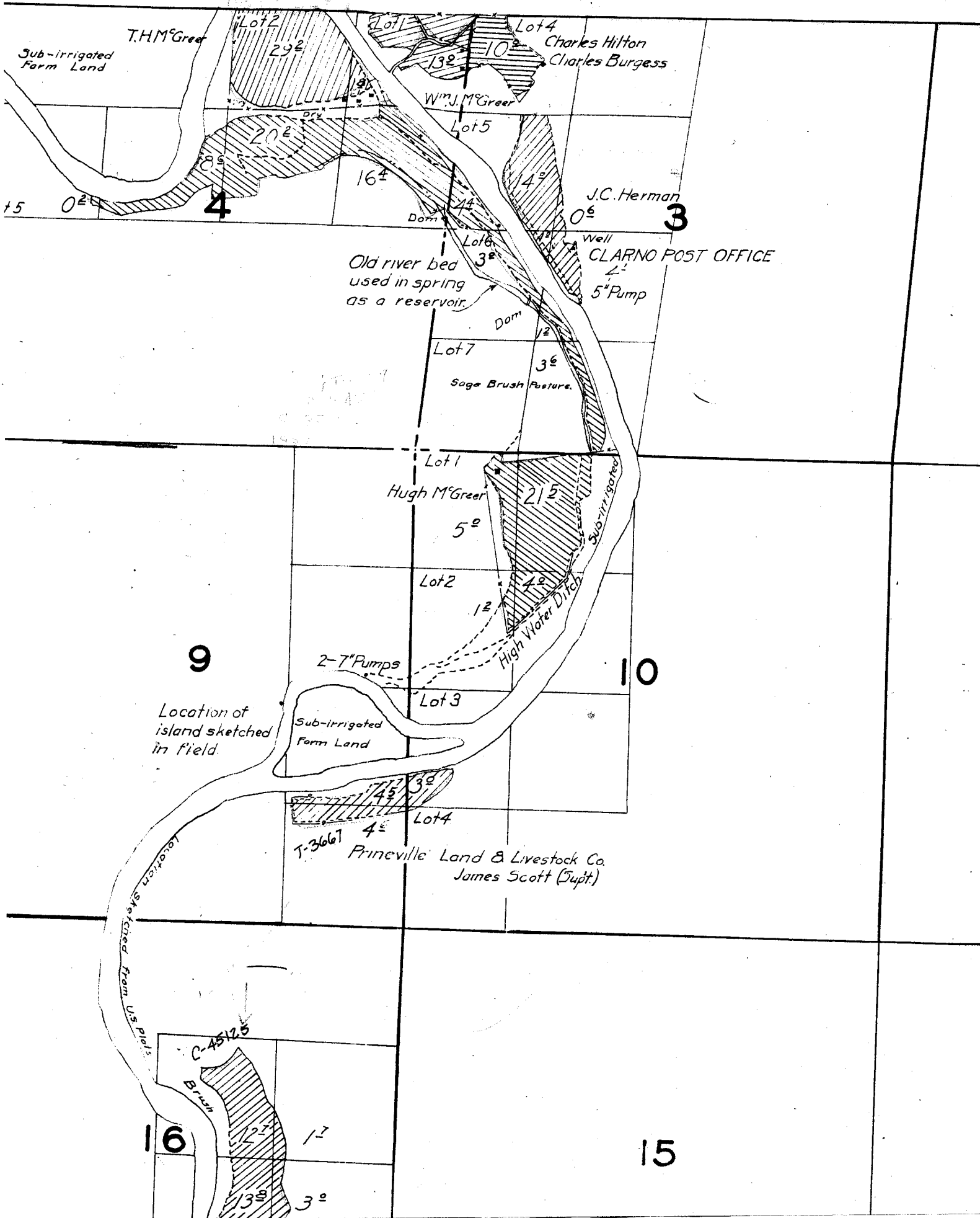


Sage
Brush
MUDDY
Rim
and
Junipers
CREEK
Rock

Sage
Brush
Prineville Land & Livestock Co
James Scott (Supt)

Handwritten scribbles and lines on the right margin of the page.

TOWNSHIP 8 S. RANGE 19 E.



19

20

30

29

Sage Brush
MUDDY

Sage Brush

Primeville Land & Livestock
James Scott (Supt)

32

31

Grain

CREEK

37

Lot 1

Dry Orchard

Spring Pump

Reservoir

Lot 2

Lot 3

4⁰

Sage

Brush

9

Lot 4

Lot 3

Abandoned Ditch

4⁵

4⁵

0²

& Rock

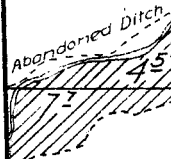
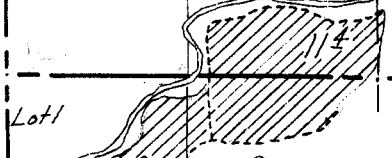
Lot 4

Sage

Brush

CURRENT

Sage Brush and Junipers



23

24

Location sketched from U.S. Plats.

C.S. Hicks
Sub-irrigated
Farm Land

26

Rim Rock

4°

Sage

Brush

25

0°

6' Pump

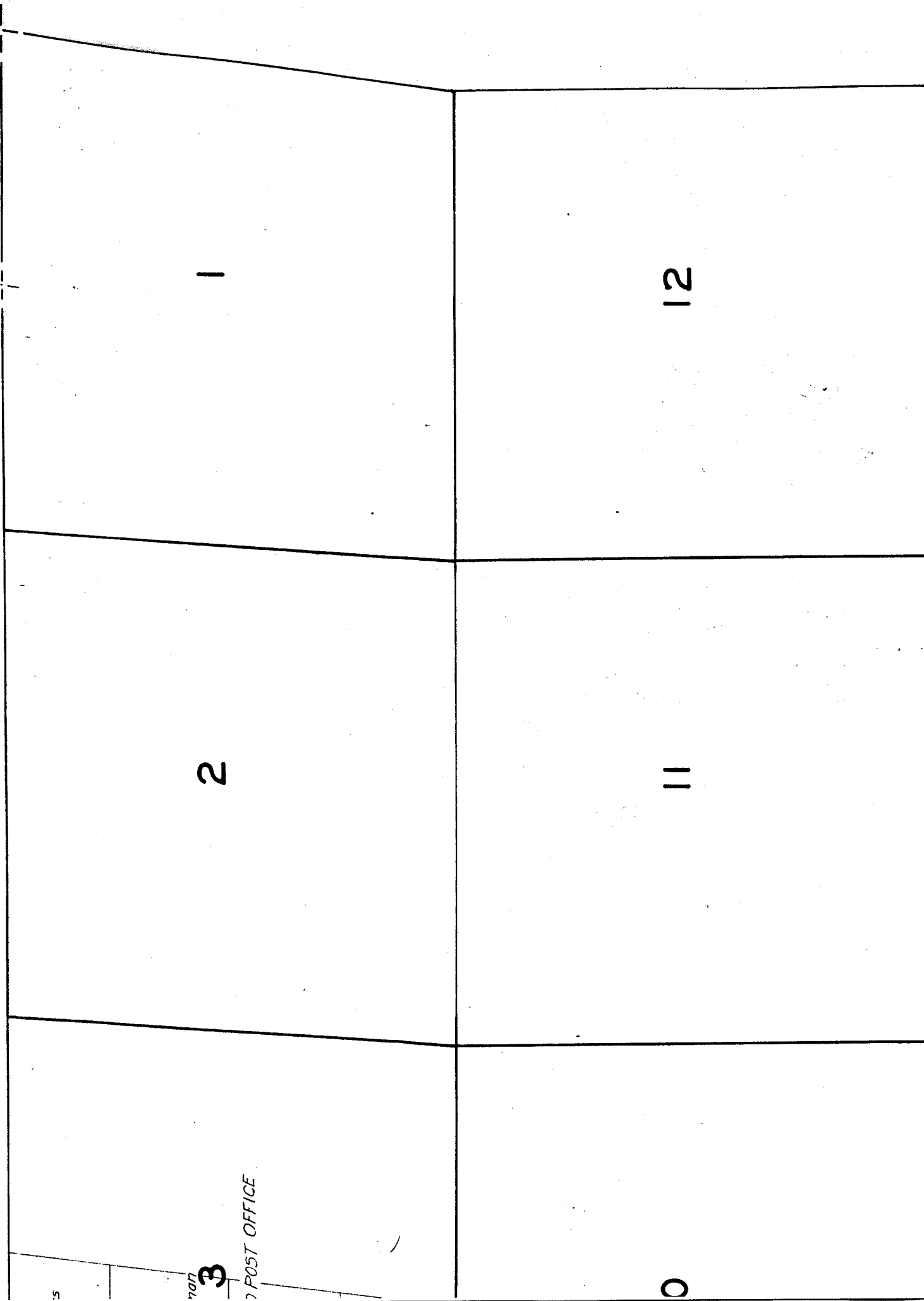
35

36

Location sketched from U.S. Plats.

SE 19 E.

42-2-1



15

14

13

16, 17, 18, 19, & 20, 1926.

2

23

24

