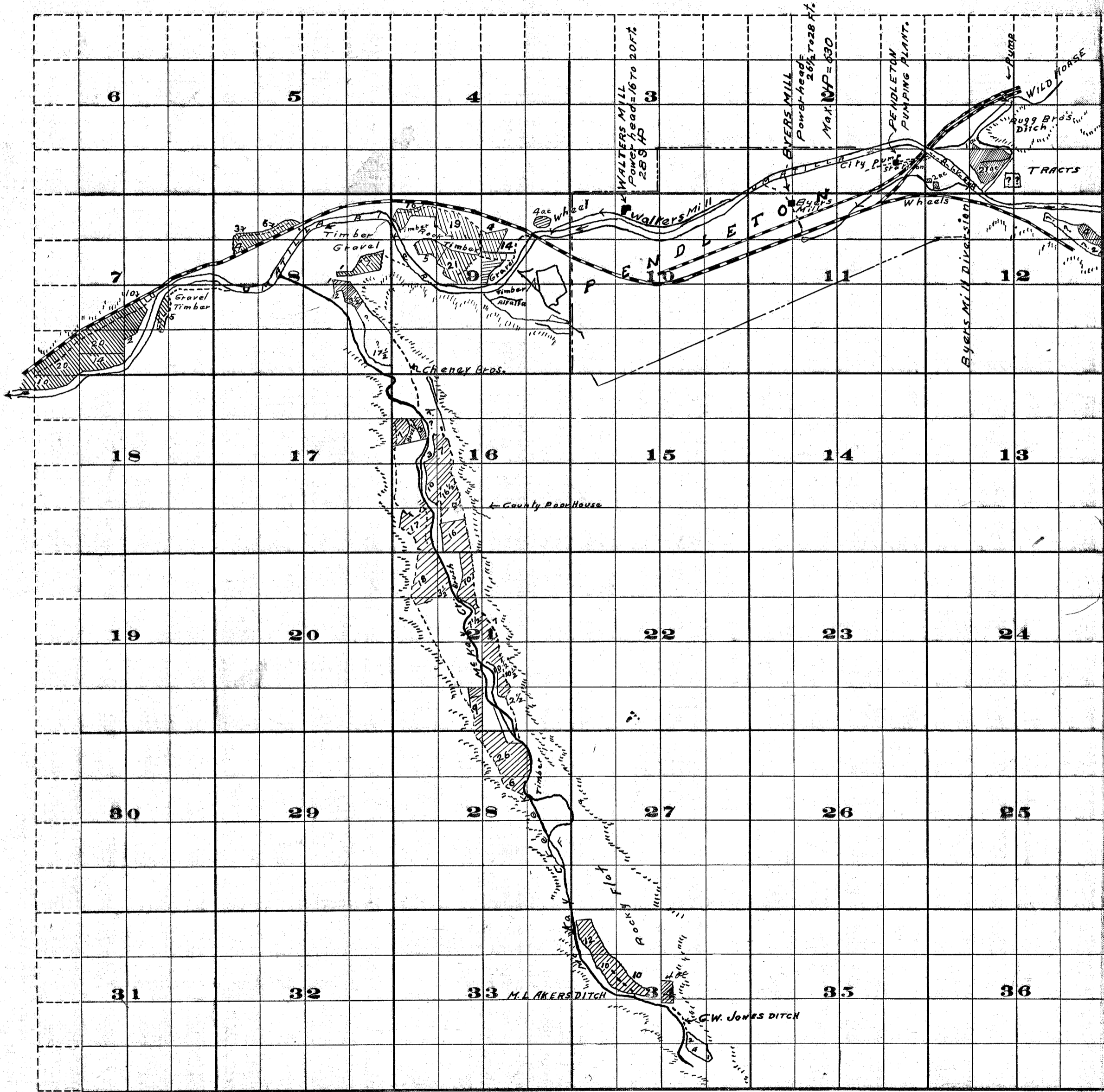


Township 2 N. , Range 32 E.W.M.



Survey by R.D. Cooper Sept. 1909

FROM OFFICE OF THE STATE ENGINEER, SALEM, OREGON

John H. Lewis - State Engineer.
Examined May 9, 1910.

ADJUDICATION - UMATILLA RIVER and TRIBUTARIES.
UMATILLA - MEKAY - WILD HORSE.