

15

22

16

21

28

27

33

34

Surveyed Aug. 12 to 14, 1926.

15

14

13

22

23

24

3	2	1
10	11	12

18

17

19

20

TOWN

6

5

7

8

TOWNSHIP 7 S. RANGE 20 E.

4

3

9

10

16

15

23

24

26

25

35

36

Wm. Metteer
02

Flume
LONE PINE CREEK
County Road

Rim
14
Rocks

40

F.E. Metteer

Flume
PINE

19

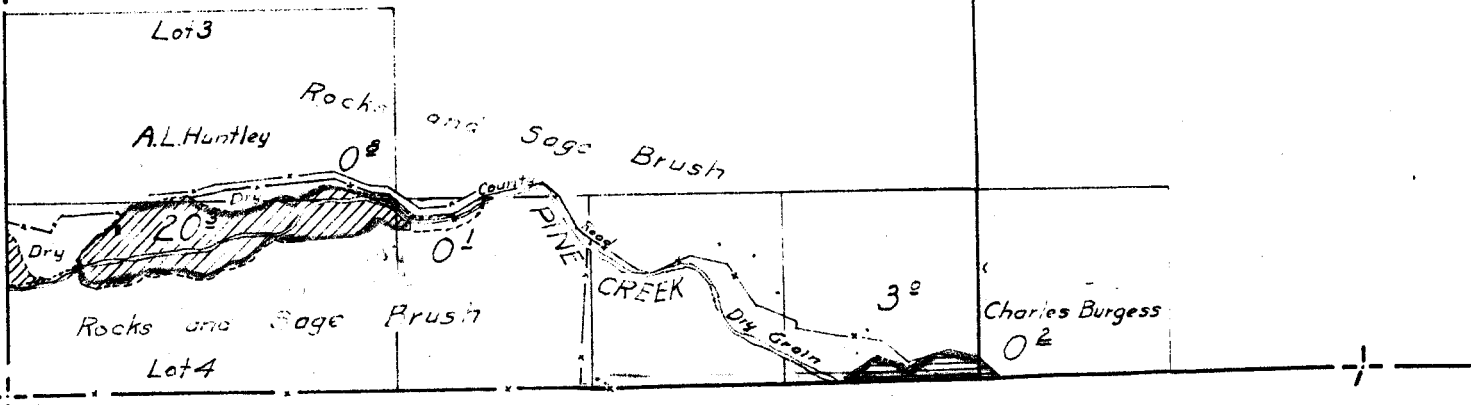
20

31

29

31

32



19

20

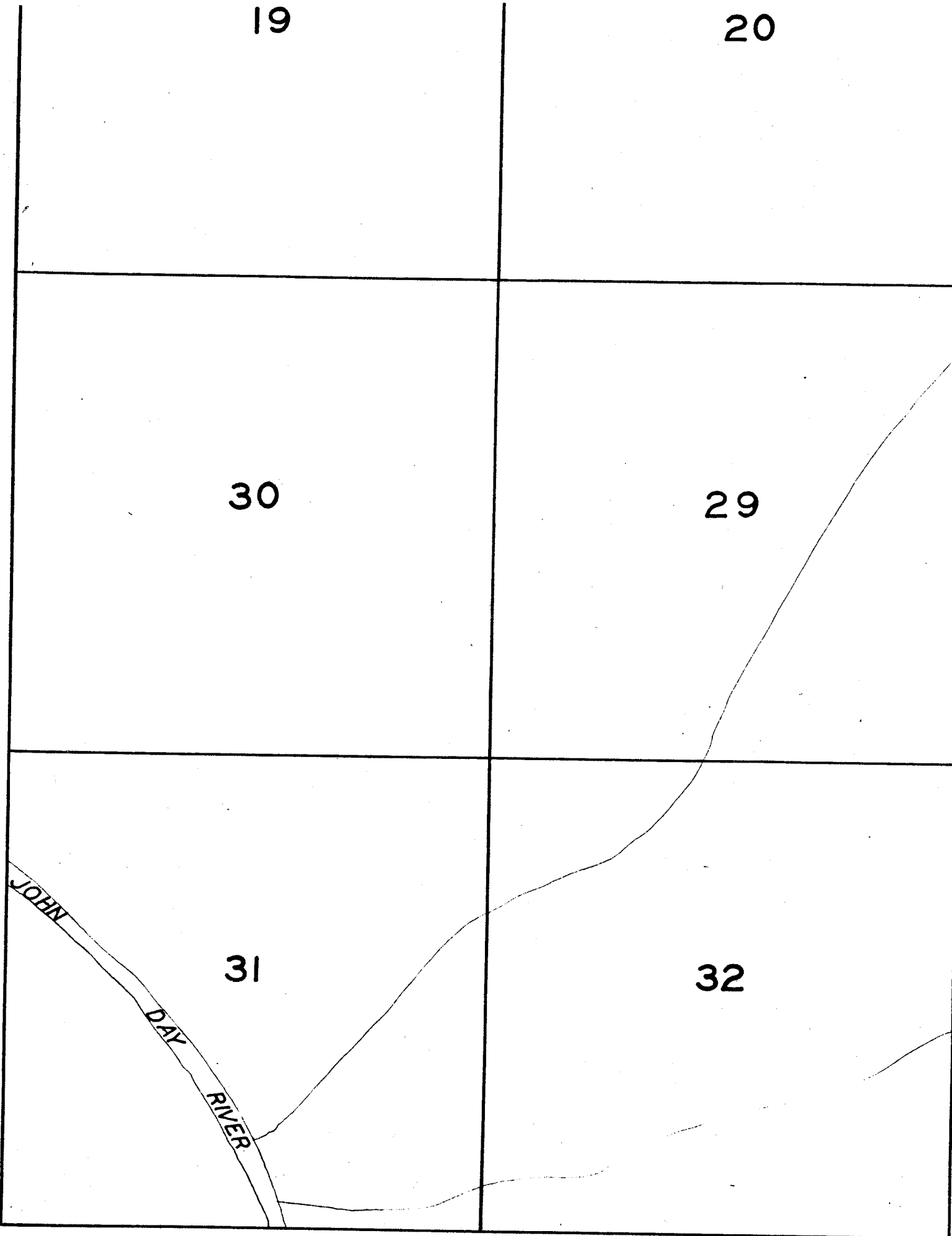
30

29

31

32

JOHN
DAY
RIVER



23

24

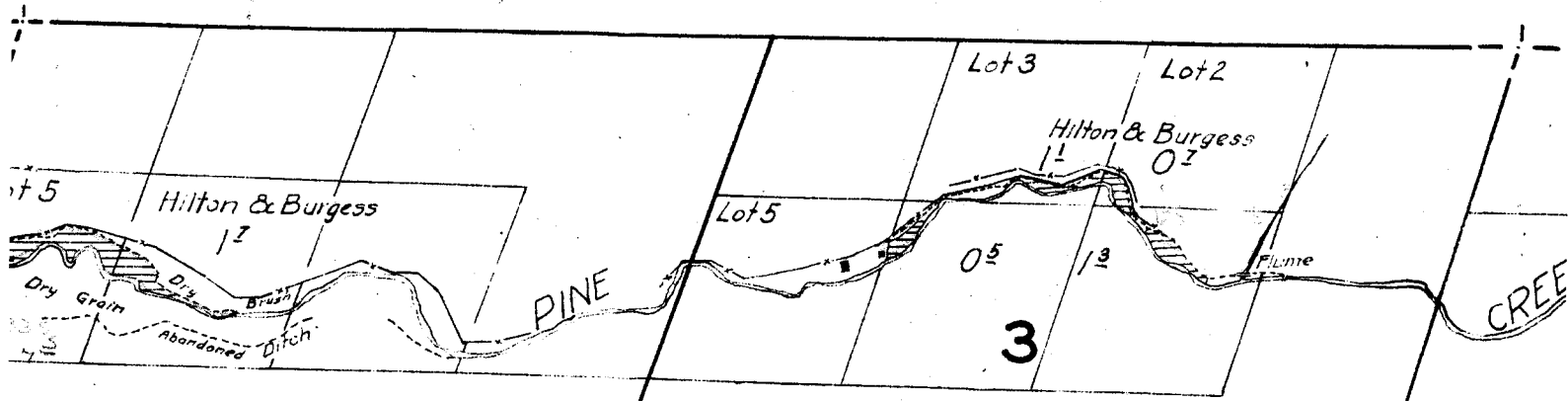
26

25

35

36

TOWNSHIP 8 S., RANGE 20 E.



Aug. 12 to 14, 1926.

Note: Bearings of section lines
taken from U.S. Township Plats.

9

10

NOTE: Stream
in vicinity of
in approximate

16

15

18

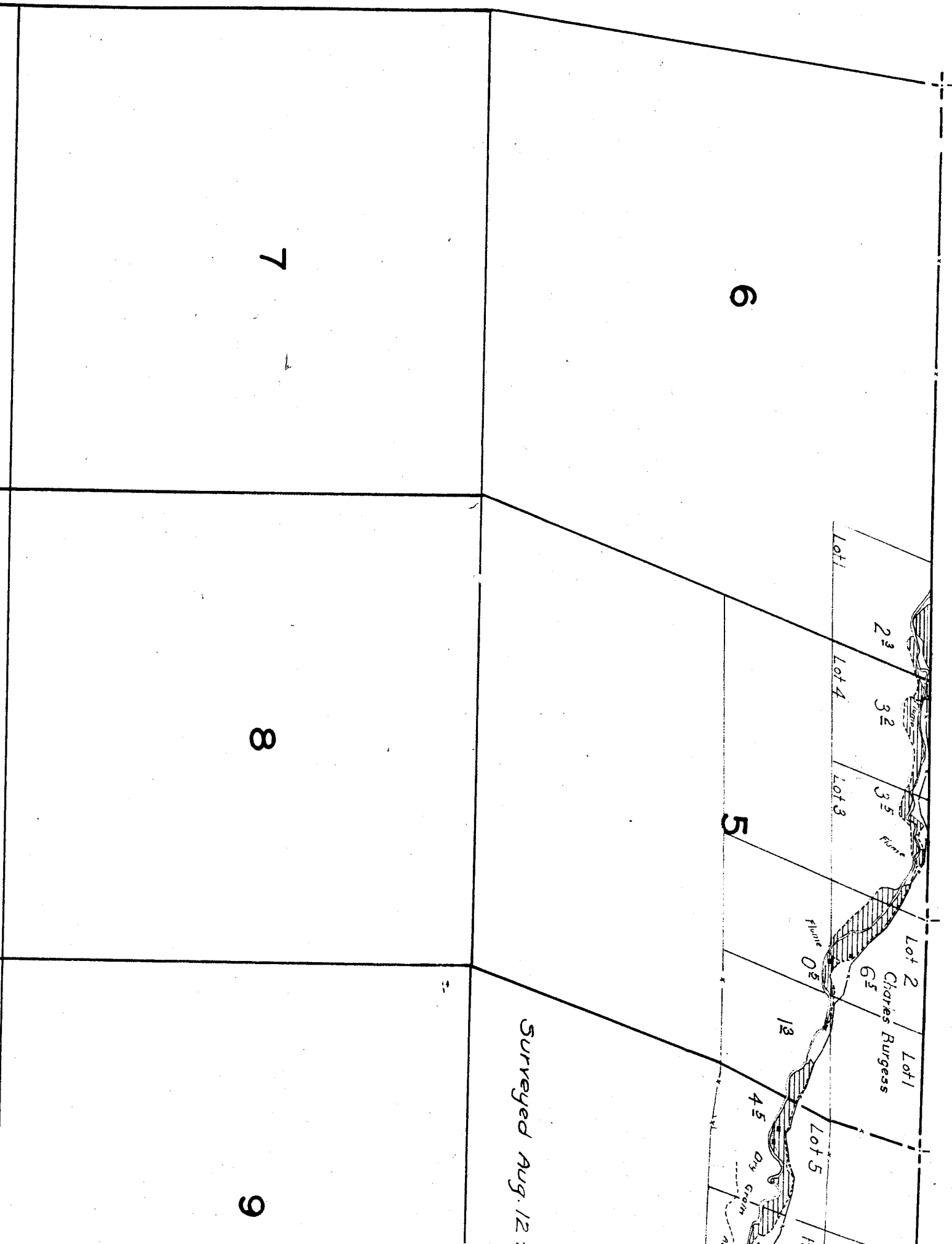
17

16

19

20

21



6

7

8

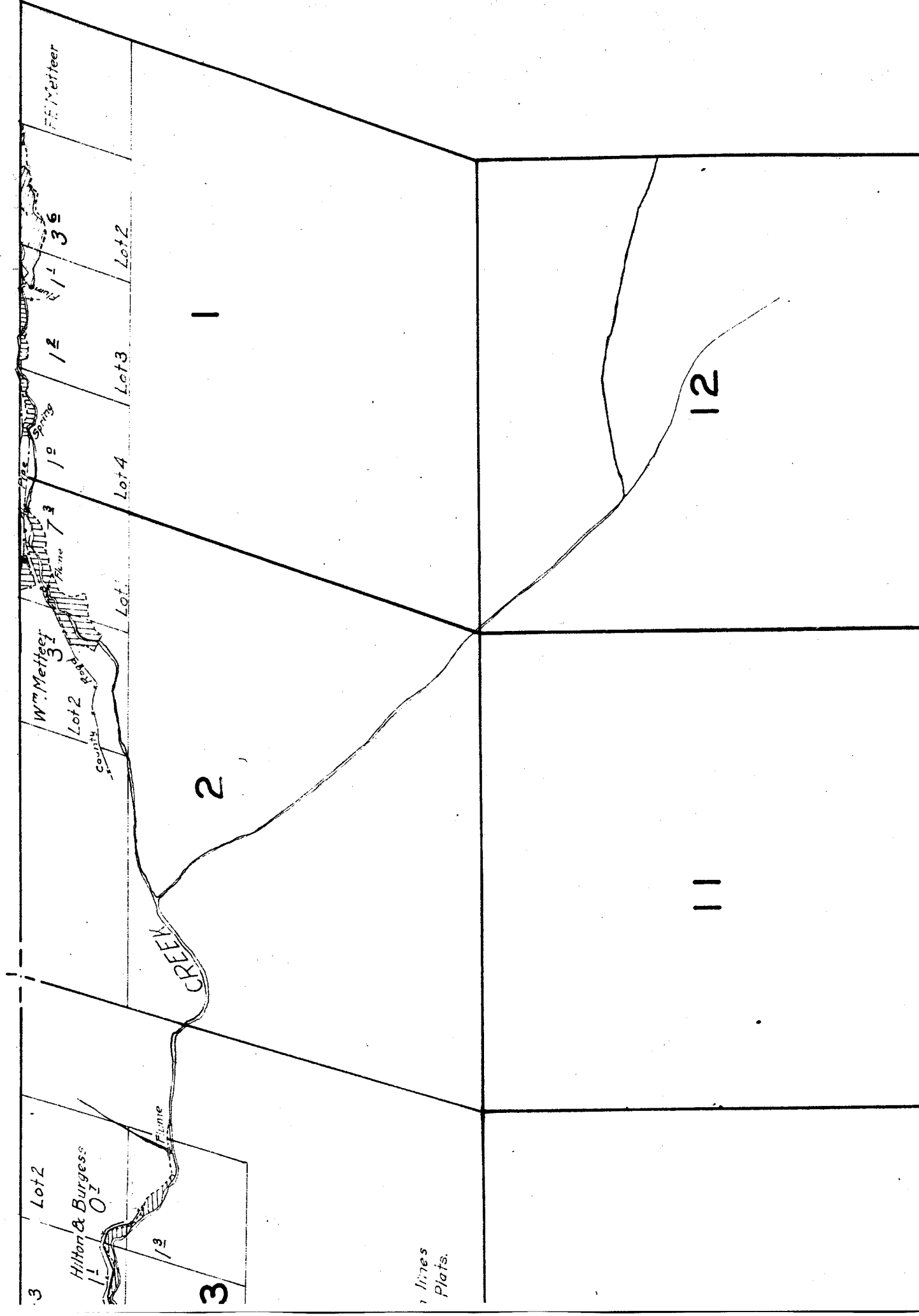
9

5

Surveyed Aug. 12:

NGE. 20 E.

43-2-1



lines Plots.

NOTE: Streams and river, except in the vicinity of irrigated land sketched in approximate location.

14

13

23

24

28

27

33

34

NOTE: S:
the main,
in approx.

16

15

21

22